



# Stinson<sup>®</sup>

High Performance Fabrics





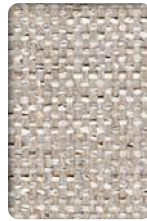
Harrison - MB  
Ocean



Harrison - MB  
Crackle



Harrison - MB  
Snowdon



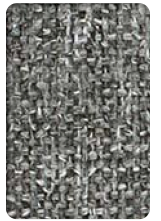
Harrison - MB  
Sand



Harrison - MB  
Boxwood



Harrison - MB  
Forsythia



Harrison - MB  
Gust



Harrison - MB  
Pike



Harrison - MB  
Thalo



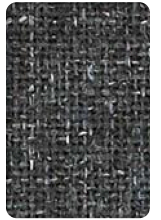
Harrison - MB  
Monarch



Harrison - MB  
Aspen



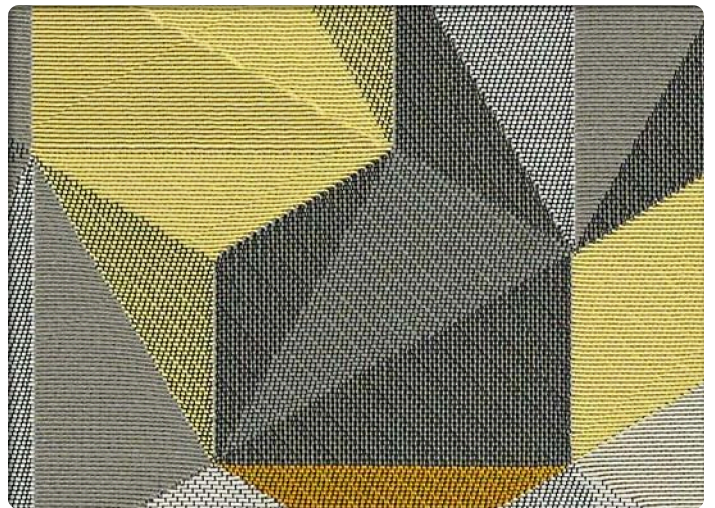
Harrison - MB  
Butternut



Harrison - MB  
Village



Hexie  
Multi



Hexie  
Ochre



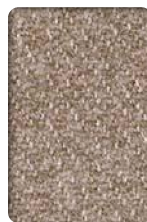
Outlander  
Dark Blue



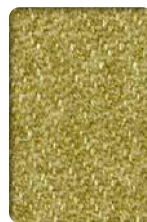
Outlander  
Fog



Outlander  
Limestone



Outlander  
Lemur



Outlander  
Fern



Outlander  
Amber



Outlander  
Flannel



Outlander  
Electric



Outlander  
Aquamarine



Outlander  
Majesty



Outlander  
Fairway



Outlander  
Charcoal



Outlander  
Otter



carolina  
an OFS company

Stinson®





Nubbly  
Wales



Nubbly  
Fog



Nubbly  
Appletini



Nubbly  
Seaglass



Nubbly  
Seaport



Nubbly  
Arctic



Nubbly  
Campfire



Nubbly  
Nectar



Nubbly  
Mallard



Nubbly  
Mystic



Nubbly  
Enclave



Honeycomb Shag  
Sunstone



Honeycomb Shag  
Tint



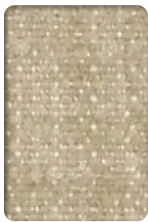
Honeycomb Shag  
Champion



Honeycomb Shag  
Ionic



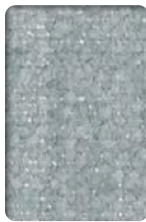
Lorelai - MB  
Gourd



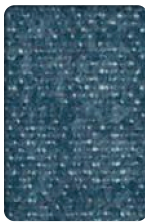
Lorelai - MB  
Oat



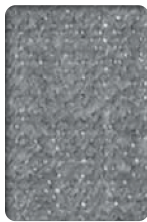
Lorelai - MB  
Blossom



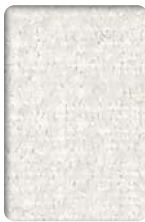
Lorelai - MB  
Ariel



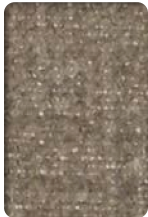
Lorelai - MB  
Birdy



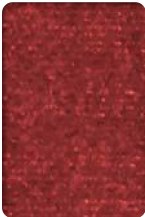
Lorelai - MB  
Heron



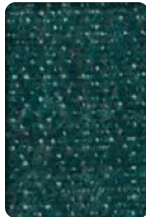
Lorelai - MB  
Cream



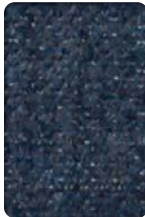
Lorelai - MB  
Ash



Lorelai - MB  
Tapas



Lorelai - MB  
Hydra



Lorelai - MB  
Navy



Lorelai - MB  
Shoal



Lorelai - MB  
Swift



carolina  
an OFS company

Stinson®





**Moby**  
Cloud



**Moby**  
Gull



**Moby**  
Violet



**Moby**  
Poppy



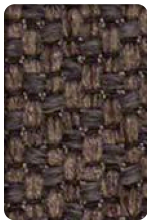
**Moby**  
Lichen



**Moby**  
Stream



**Moby**  
Vesper



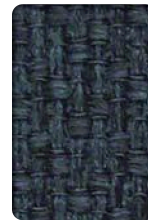
**Moby**  
Kona



**Moby**  
Cardinal



**Moby**  
Surf



**Moby**  
Atlantic



**Moby**  
Black



**Armature**  
Pier



**Armature**  
York



**Armature**  
Masala



**Armature**  
Radar



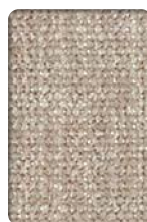
**Artisan**  
London



**Artisan**  
Quill



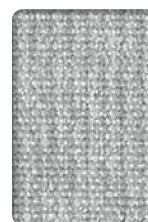
**Artisan**  
Violet



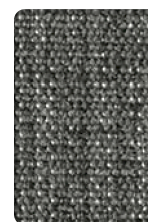
**Artisan**  
Fossil



**Artisan**  
Anjou



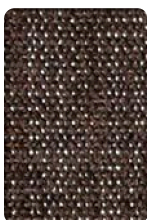
**Artisan**  
Ice Blue



**Artisan**  
Tungsten



**Artisan**  
Moody



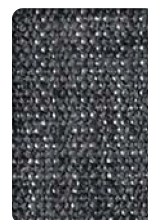
**Artisan**  
Hearth



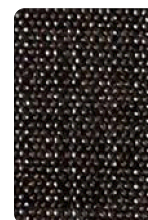
**Artisan**  
Nectar



**Artisan**  
Marlin



**Artisan**  
Seaport



**Artisan**  
Darth





Cassidy 2.0  
Stucco



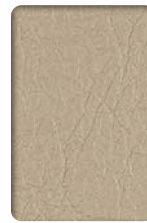
Cassidy 2.0  
Cove



Cassidy 2.0  
Mirage



Cassidy 2.0  
Cashmere



Cassidy 2.0  
Greige



Cassidy 2.0  
Desert



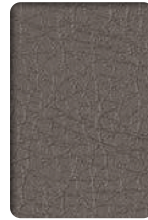
Cassidy 2.0  
Pelican



Cassidy 2.0  
Cadet



Cassidy 2.0  
Denim



Cassidy 2.0  
Stainless



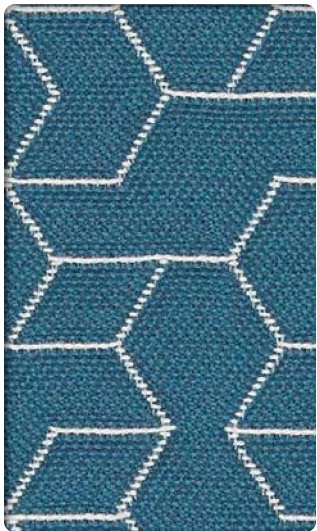
Cassidy 2.0  
Ebony



Cassidy 2.0  
Sunset



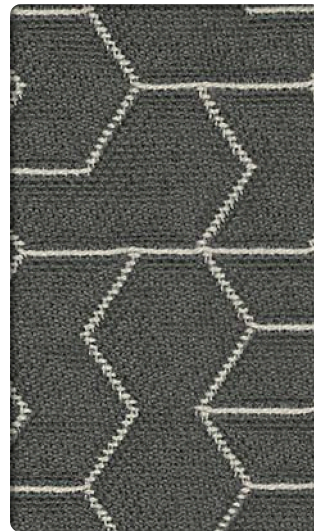
Cassidy 2.0  
Hickory



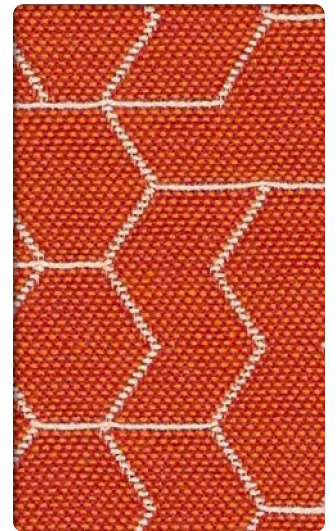
Tangram  
Grotto



Tangram  
Denim



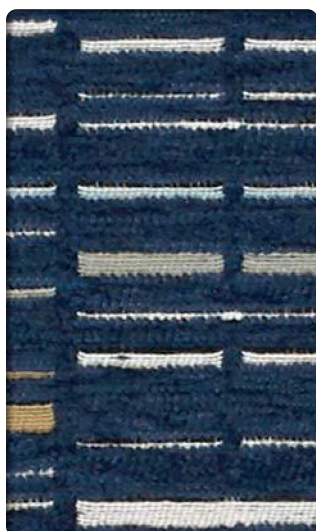
Tangram  
Slate



Tangram  
Guava



Glimpse  
Splash



Glimpse  
Sonic

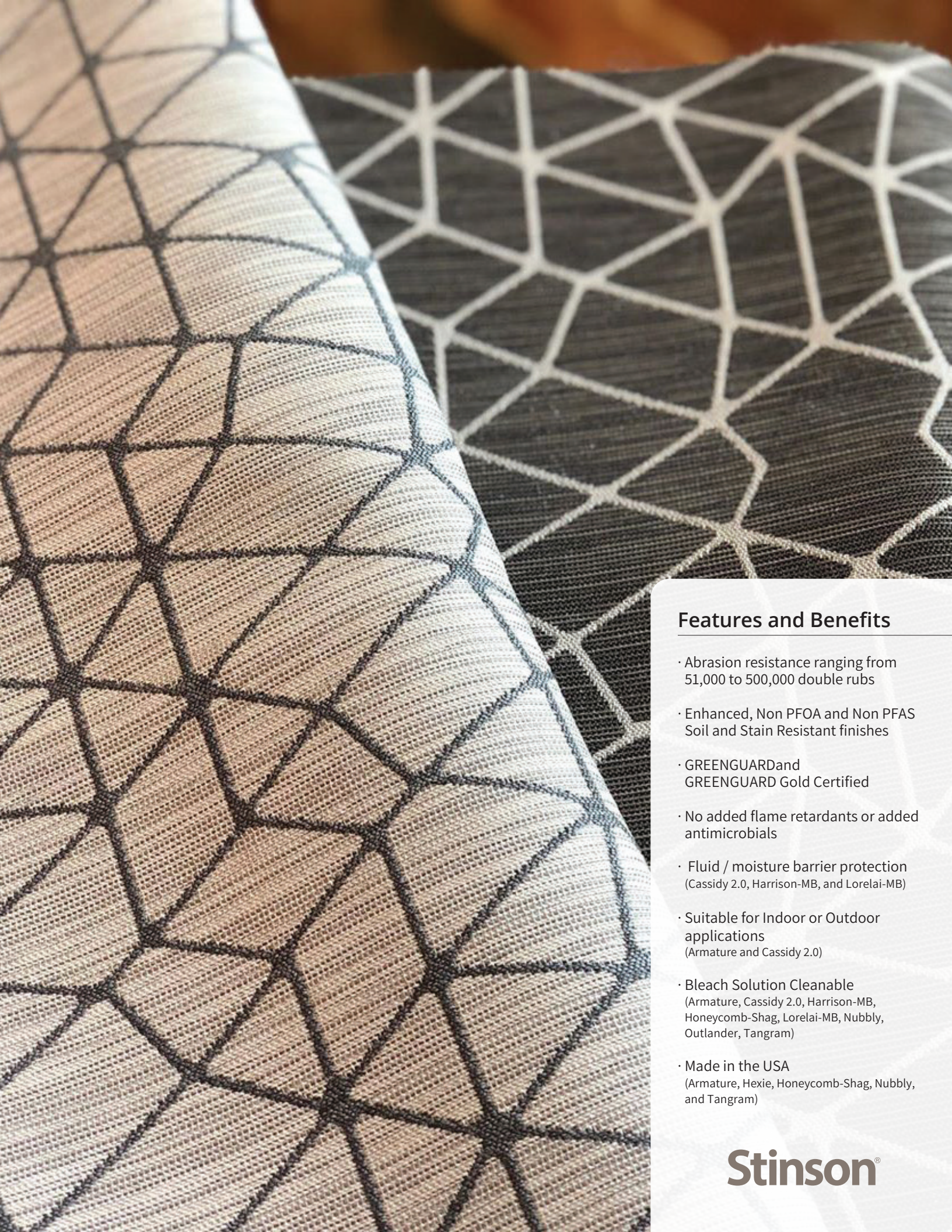


Glimpse  
Pier



Glimpse  
Vivid





## Features and Benefits

- Abrasion resistance ranging from 51,000 to 500,000 double rubs
- Enhanced, Non PFOA and Non PFAS Soil and Stain Resistant finishes
- GREENGUARD and GREENGUARD Gold Certified
- No added flame retardants or added antimicrobials
- Fluid / moisture barrier protection (Cassidy 2.0, Harrison-MB, and Lorelai-MB)
- Suitable for Indoor or Outdoor applications (Armature and Cassidy 2.0)
- Bleach Solution Cleanable (Armature, Cassidy 2.0, Harrison-MB, Honeycomb-Shag, Lorelai-MB, Nubbly, Outlander, Tangram)
- Made in the USA (Armature, Hexie, Honeycomb-Shag, Nubbly, and Tangram)

**Stinson®**