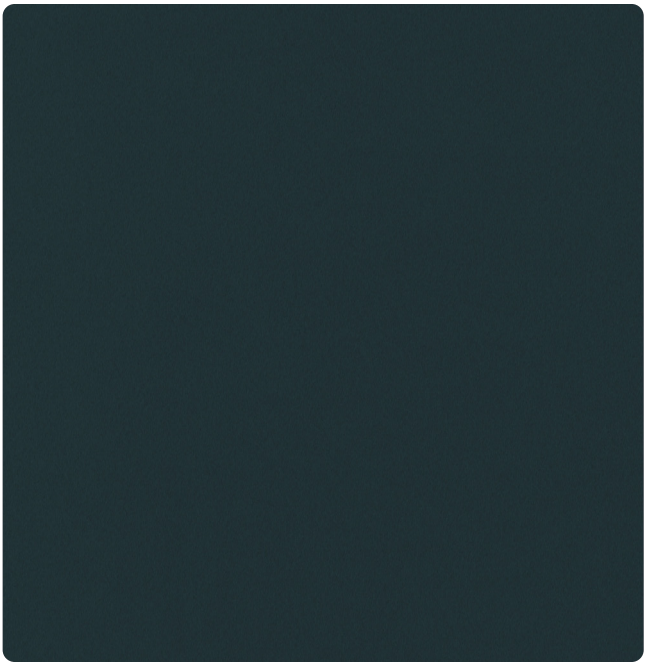
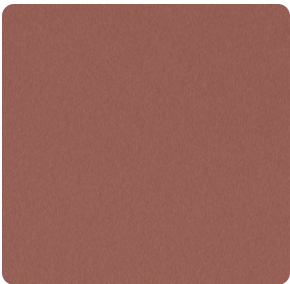


OFS collection | Haven

Standard commercial textiles



Tranquil



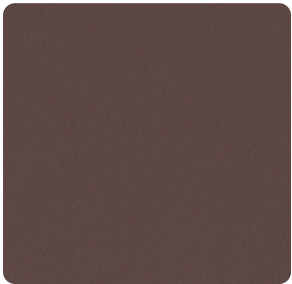
Bliss



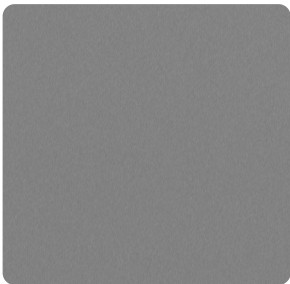
Serenity



Cocoon



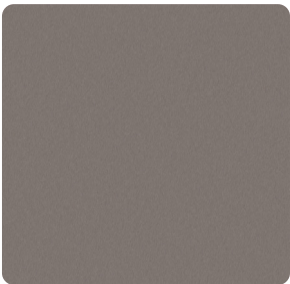
Lavender



Cloud



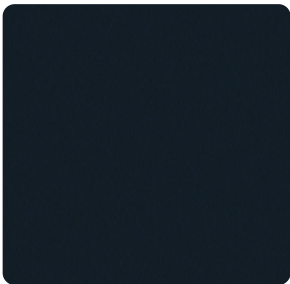
Glow



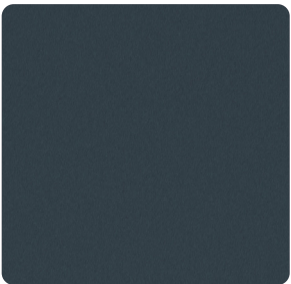
Drift



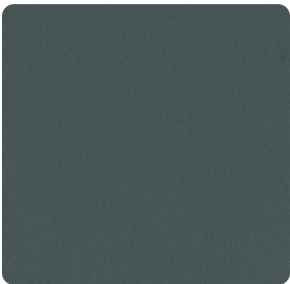
Whisper



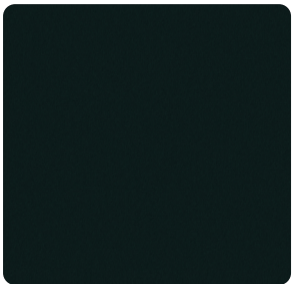
Dream



Grace



Harmony



Meadow



OFS collection | Haven

Pattern	Content	Backing	Repeat	Abrasion	Tackable
Haven	100% Post-consumer recycled polyester (GRS certified)	N/A	N/A	100,000 Double rubs	No
Width	54"				
Flammability	This textile meets all appropriate flammability requirements, including CAL117-2013 and is compatible with CAL TB-133.				
Maintenance	W - Vacuum prior to cleaning. Can clean with water based cleaners, such as upholstery shampoo or foam from a mild detergent. Avoid over-saturating the fabric.				
Samples	Please contact your local sales representative or visit ofs.com for samples.				
Reduced environmental impact	<ul style="list-style-type: none">• OEKO TEX Standard 100• PFAS free				



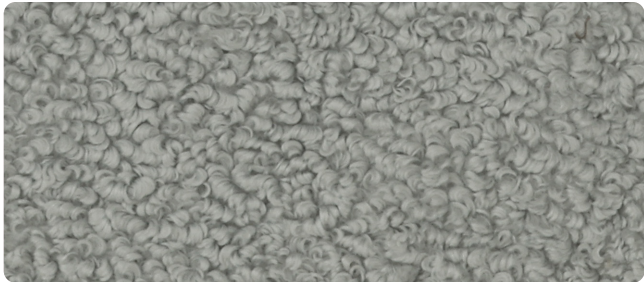
ACT Registered Certification Marks
Abrasion test results exceeding ACT Performance Guidelines are not an indicator of product lifespan.
Multiple factors affect fabric durability and appearance retention.



carolina
an OFS company



Artic



Down



Thorn



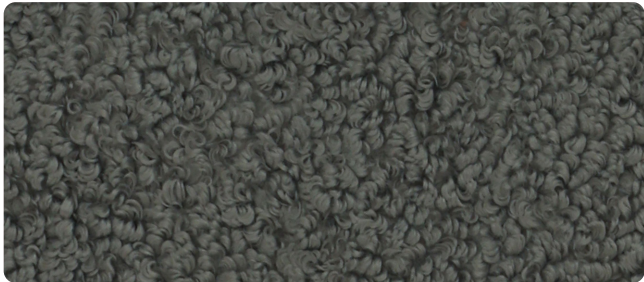
Flaxen



Doe



Midnight



Smoke



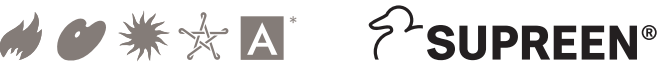
Otter



Truffle

OFS collection | Monte

Pattern	Content	Backing/finish	Repeat	Abrasion	Tackable
Monte	94% Polyester, 4% TPU, 2% silicone	Supreen	N/A	100,000 Double rubs	No
Width	54"				
Flammability	This textile meets all appropriate flammability requirements, including CAL117-2013 and is compatible with CAL TB-133.				
Maintenance	WS - Cleanable with solvent based furniture cleaner or soap and water or 10% diluted bleach solution if necessary.				
Samples	Please contact your local sales representative or visit ofs.com for samples.				
Note	Environmentally friendly production process.				
Reduced environmental impact	<ul style="list-style-type: none">• No added flame retardant chemicals - AB2998 compliant• No added anti-bacterial / anti-microbial chemicals• PFAS free• Lead / heavy metal free• BPA free / tris free / formaldehyde free• Does not contain conflict minerals				



ACT Registered Certification Marks
Abrasion test results exceeding ACT Performance Guidelines are not an indicator of product lifespan.
Multiple factors affect fabric durability and appearance retention.



carolina
an OFS company



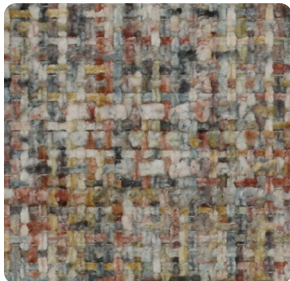
Echo



Myst



Whisper



Flare



Lustre



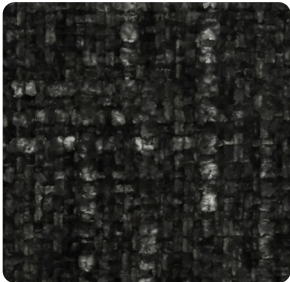
Glint



Veil



Aura



Haze

OFS collection | Halo

Pattern	Content	Repeat	Abrasion	Tackable
Halo	100% Polyester	N/A	87,000 Double rubs	Yes
Width	54"			
Flammability	This textile meets all appropriate flammability requirements, including CAL117-2013 and is compatible with CAL TB-133.			
Maintenance	W - Vacuum prior to cleaning. Can clean with water based cleaners, such as upholstery shampoo or foam from a mild detergent. Avoid over-saturating the fabric.			
Samples	Please contact your local sales representative or visit ofs.com for samples.			
Reduced environmental impact	<ul style="list-style-type: none">• OEKO TEX Standard 100• PFAS free			



ACT Registered Certification Marks
Abrasion test results exceeding ACT Performance Guidelines are not an indicator of product lifespan.
Multiple factors affect fabric durability and appearance retention.



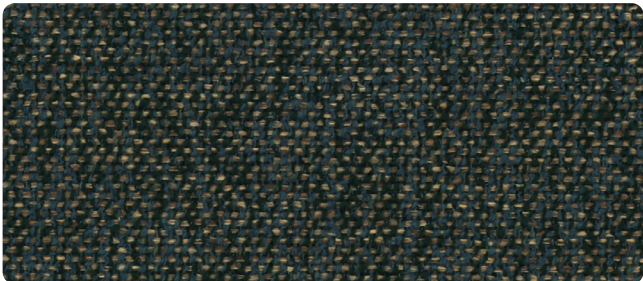
carolina
an OFS company



Denali



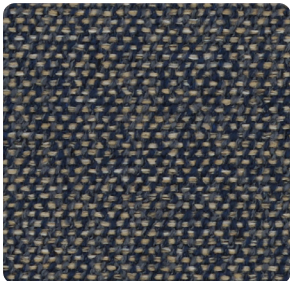
Yellowstone



Sequoia



White Sands



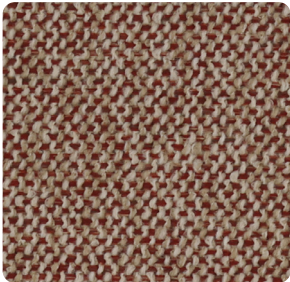
Olympic



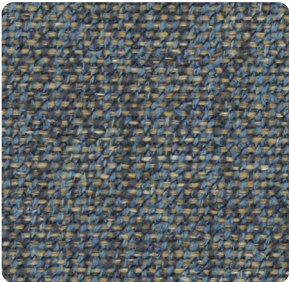
Everglades



Gunnison



Redwood



Cascades



Rainer



OFS collection | Roam

Pattern	OFS grade	Content	Finish	Repeat	Abrasion	Tackable
Roam	2	60% Polyester, 40% post consumer recycled polyester	N/A	N/A	100,000	Yes
Width	54"					
Flammability	These textiles meet all appropriate flammability requirements, including California Bulletin #117 and NFPA 260, and are compatible with California Bulletin #133.					
Maintenance	WS - Cleanable with solvent based furniture cleaner or soap and water or 10% diluted bleach solution if necessary.					
Samples	Please contact your local sales representative or visit ofs.com for samples.					
Note	Environmentally friendly production process. Made in the USA.					
Reduced environmental impact	<ul style="list-style-type: none">• All fabrics are recyclable.• There are 22 bottles recycled per yard of fabric.					



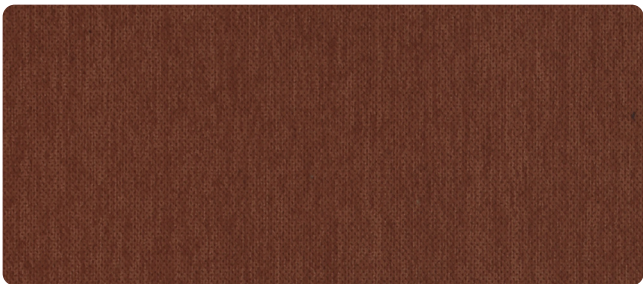
ACT Registered Certification Marks
Abrasion test results exceeding ACT Performance Guidelines are not an indicator of product lifespan.
Multiple factors affect fabric durability and appearance retention.



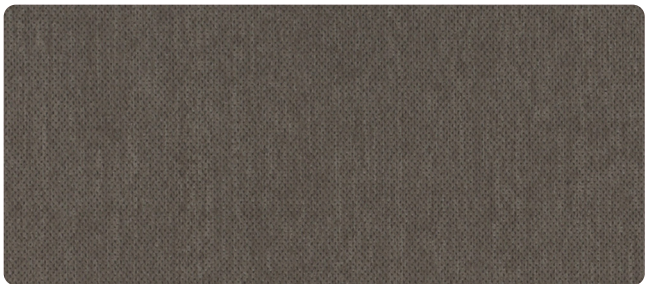
carolina
an OFS company



Oat



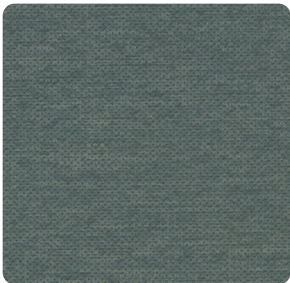
Auburn



Flint



Pine



Lamb's ear



Brass



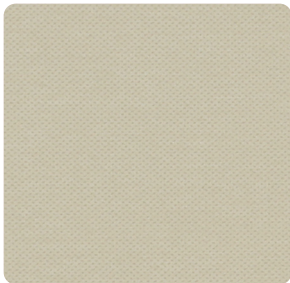
Harbor



Anchor



Hickory



Parchment



Fawn

OFS collection | Eton

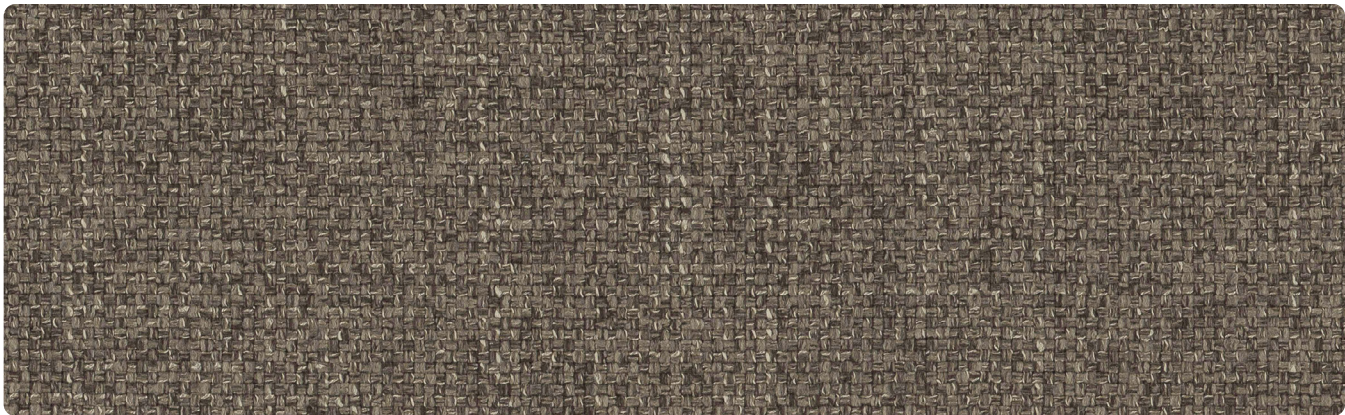
Pattern	Content	Finish	Backing	Repeat	Abrasion	Tackable
Eton	98% Polyester, 2% nylon	High performance stain repellant	Polyester	N/A	78,000 Double rubs	Yes
Width	54"					
Flammability	This textile meets all appropriate flammability requirements, including CAL117-2013, NFPA 260, UFAC Class 1, and is compatible with Cal TB-133.					
Maintenance	W - Vacuum prior to cleaning. Can clean with water based cleaners, such as upholstery shampoo or foam from a mild detergent. Avoid over-saturating the fabric.					
Samples	Please contact your local sales representative or visit ofs.com for samples.					
Reduced environmental impact	<ul style="list-style-type: none">• GREENGUARD certified• PFAS free					



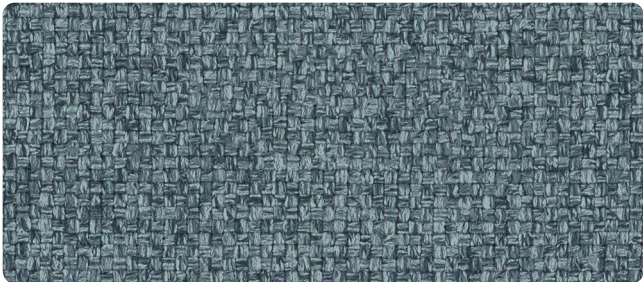
ACT Registered Certification Marks
Abrasion test results exceeding ACT Performance Guidelines are not an indicator of product lifespan.
Multiple factors affect fabric durability and appearance retention.



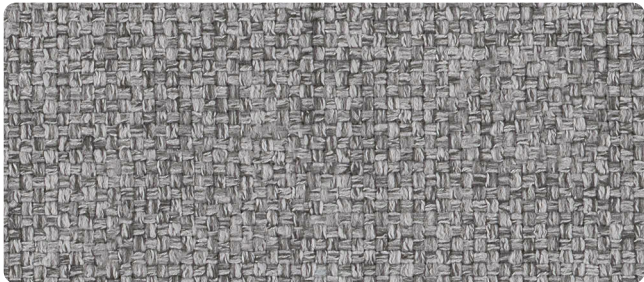
carolina
an OFS company



Ridge



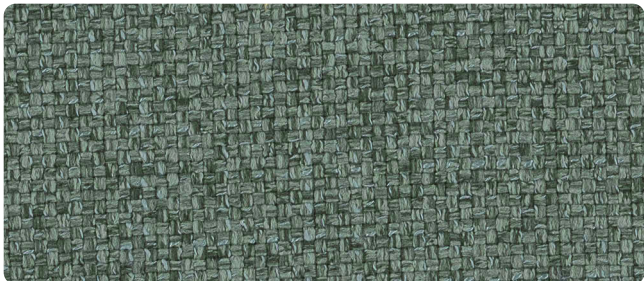
River



Stratus



Crow



Jade



Cavern



Ray



Gravel



Obrina

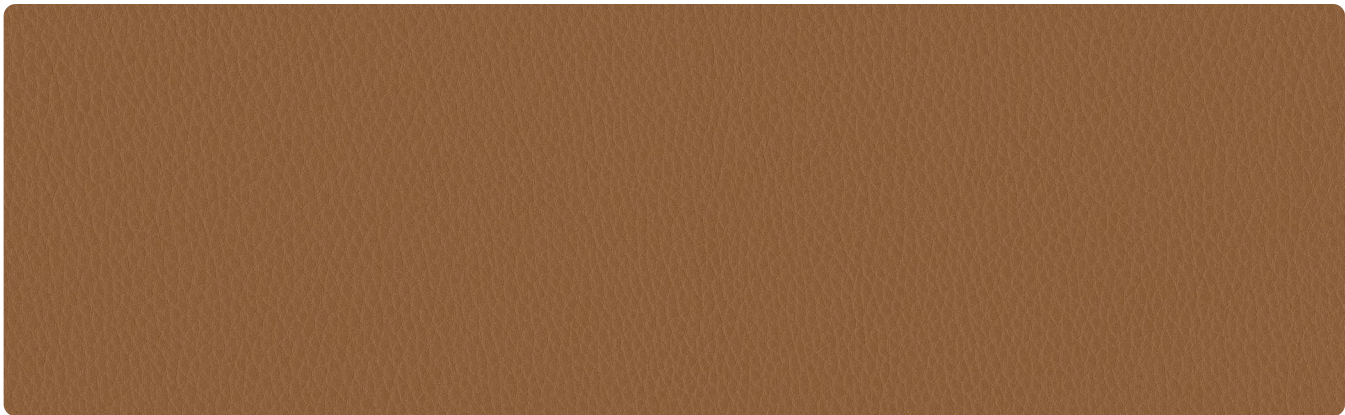


OFS collection | Arbor

Pattern	OFS grade	Content	Finish	Backing	Repeat	Abrasion	Tackable
Arbor	1	85% Polyester, 15% viscose rayon	N/A	Acrylic	N/A	250,000 Double rubs	Yes
Width	54"						
Flammability	These textiles meet all appropriate flammability requirements, including California Bulletin #117 2013, NFPA 260 class 1, UFAC class 1, and ASTM E84						
Maintenance	WS - Cleanable with water based cleaner						
Samples	Please contact your local sales representative or visit ofs.com for samples.						
Reduced environmental impact	<ul style="list-style-type: none">• GREENGUARD certified• NSF 336 compliant						



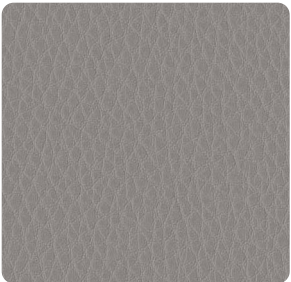
carolina
an OFS company



Verse



Cannon



Reverb



Melody



Bass



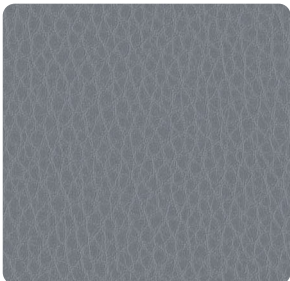
Amp



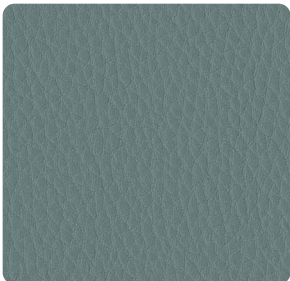
Folk



Rhyme



Glee



Indie



Mic



Alto

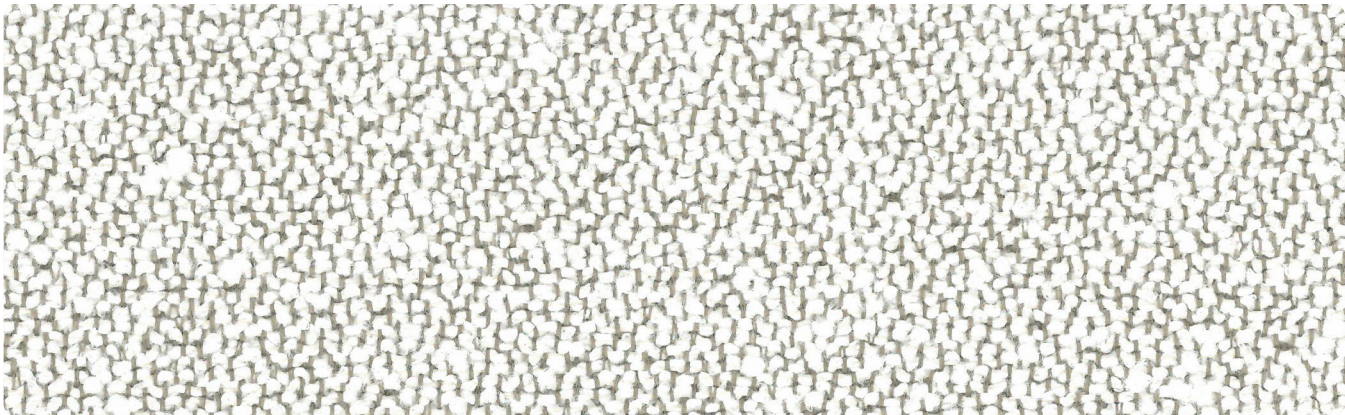


OFS collection | Lyric

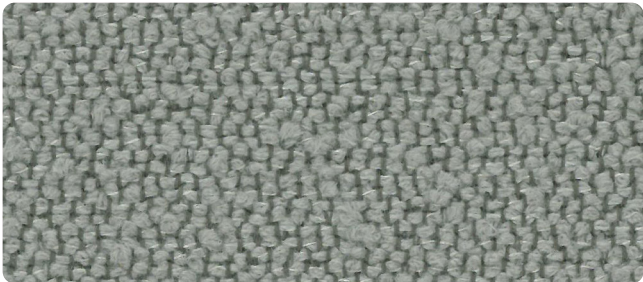
Pattern	OFS grade	Content	Finish	Backing	Repeat	Abrasion	Tackable
Lyric	2	100% Clean vinyl, phthalate free	Protective overcoat	Polyester	N/A	500,000 Double rubs	No
Width	54"						
Flammability	These textiles meet all appropriate flammability requirements, including California Bulletin #117 2013, NFPA 260 class 1, and UFAC class 1.						
Maintenance	W - Cleanable with water based cleaner or bleach cleanable with 10% diluted bleach solution if necessary.						
Samples	Please contact your local sales representative or visit ofs.com for samples.						
Reduced environmental impact	<ul style="list-style-type: none">• Single source fiber content• GREENGUARD certified• NSF 336 compliant						



carolina
an OFS company



Cotton



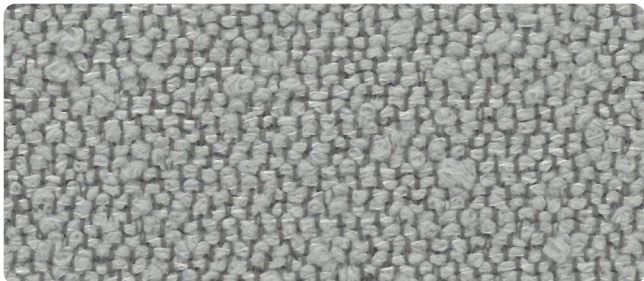
Clove



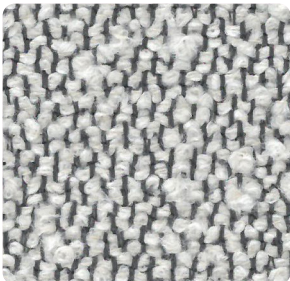
Spice



Sand



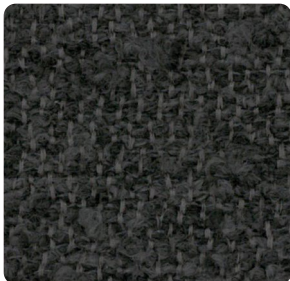
Fossil



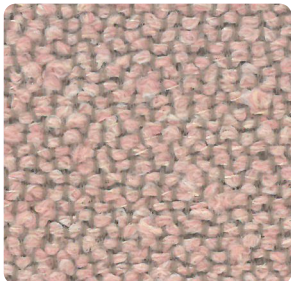
Ash



Sea Salt



Night



Dusk

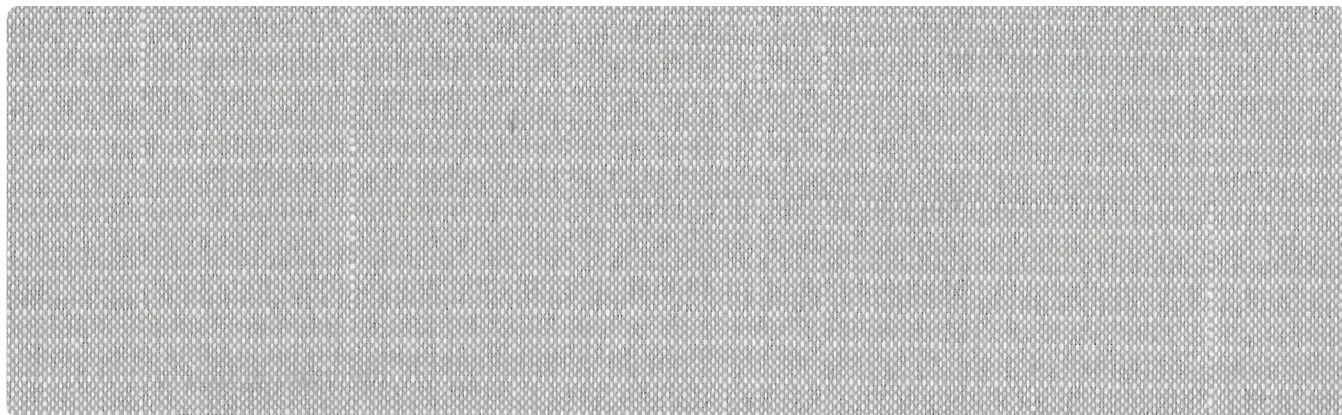


OFS collection | Allure

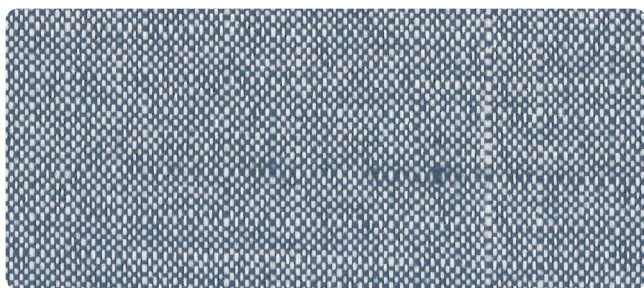
Pattern	OFS grade	Content	Finish	Repeat	Abrasion	Tackable
Allure	2	51% Post consumer recycled polyester, 49% polyester	N/A	N/A	100,000	Yes
Width	54"					
Flammability	These textiles meet all appropriate flammability requirements, including California Bulletin #117 and NFPA 260, and are compatible with California Bulletin #133.					
Maintenance	SW - Cleanable with solvent based furniture cleaner or soap and water or 10% diluted bleach solution if necessary.					
Samples	Please contact your local sales representative or visit ofs.com for samples.					
Note	Environmentally friendly production process. Made in the USA.					
Reduce environmental impact	<ul style="list-style-type: none">• All fabrics are recyclable.• There are 31 bottles recycled per yard of fabric.					



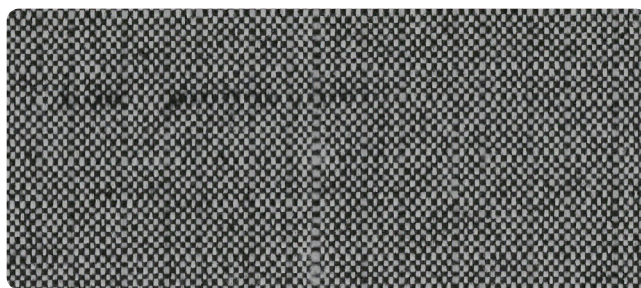
carolina
an OFS company



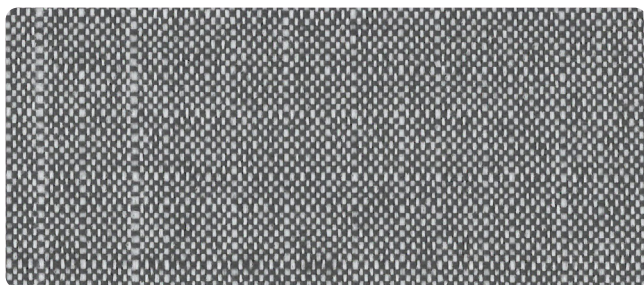
Windsor



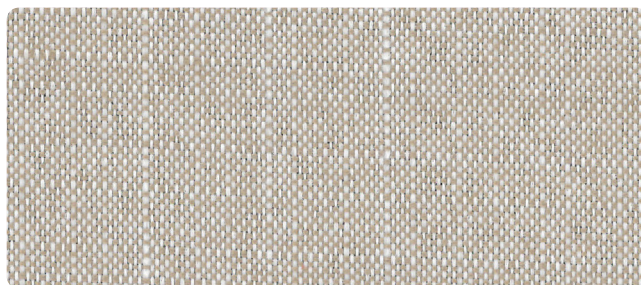
Dapper



Tux



Hoxton



Tweed

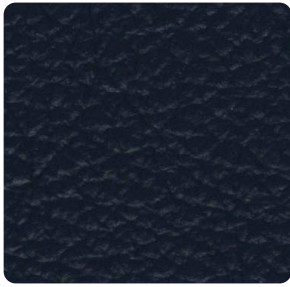
OFS collection | Gatsby

Pattern	OFS grade	Content	Finish	Repeat	Abrasion	Tackable
Gatsby	2	51% Post consumer recycled polyester, 49% polyester	N/A	N/A	50,000	Yes
Width	54"					
Flammability	These textiles meet all appropriate flammability requirements, including California Bulletin #117 and NFPA 260, and are compatible with California Bulletin #133.					
Maintenance	SW - Cleanable with solvent based furniture cleaner or soap and water or 10% diluted bleach solution if necessary.					
Samples	Please contact your local sales representative or visit ofs.com for samples.					
Note	Environmentally friendly production process. Made in the USA.					
Reduce environmental impact	<ul style="list-style-type: none">• All fabrics are recyclable.• There are 20 bottles recycled per yard of fabric.					



carolina
an OFS company

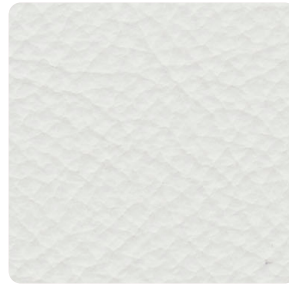
Cielo



Azul



Noche



Nubé

Hyde



Bronco



Cedar



Gunmetal



Tobacco

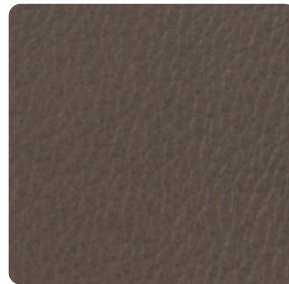
West



Bandera



Bodie



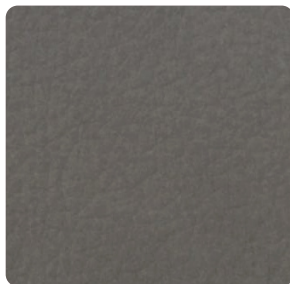
Cody



Durango



Laredo



Silverton

OFS | Leather collection

Pattern	OFS grade	Thickness	Finish
Cielo	L1	1.1 - 1.3 mm	Finished corrected top grain
Hyde	L1	.9 - 1.1 mm	Semi-aniline
West	L1	1.0 - 1.2 mm	Finished corrected top grain
Note	Natural characteristics such as healed scars, insect marks, and other elements of nature may be present on each hide.		



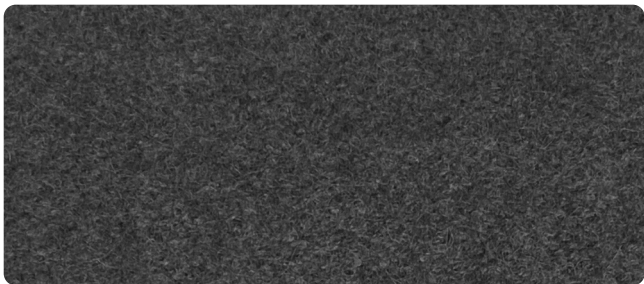
carolina
an OFS company



Pearl



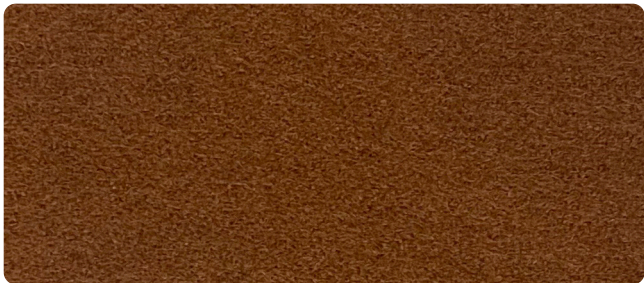
Beau



Millie



Dolly



Amber

OFS collection | Shep

Pattern	OFS grade	Content	Finish	Repeat	Abrasion	Tackable	Acoustic performance
Shep	3	100% Wool	N/A	N/A	ASTM D4966 40,000 cycles Martindale method	Yes	ASTM C423 1.05 NRC 1.07 SAA
Width	54"						
Flammability	These textiles meet all appropriate flammability requirements, including California Bulletin #117-2013 and NFPA 260 + UFAC Class 1, ASTM E84, and are compatible with California Bulletin #133.						
Maintenance	W — Water-based cleaning agents only						
Samples	Please contact your local sales representative for samples.						
Note	<p>Non-mulesed wool</p> <p>Certified Oeko-Tex 100 Standard, global certification for environmental and health consciousness.</p> <p>Colors Pearl and Dolly are created by blending the natural wool from the fleece of sheep with black, brown, and white wool – they are not dyed. This is the most environmentally friendly “coloring” process possible, simply using the natural hair in a blend to create a fabric of rich, multi-color hues.</p>						
Reduce environmental impact	<ul style="list-style-type: none">• Fully Biodegradable• 100% Natural wool						



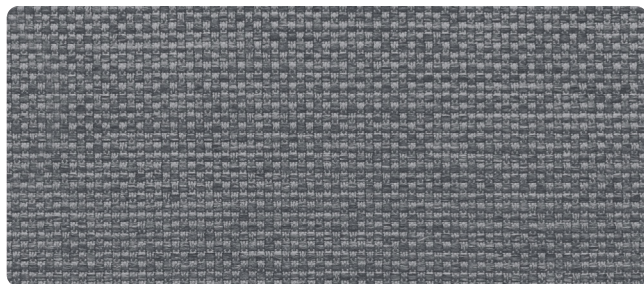
carolina
an OFS company

OFS collection | Terra

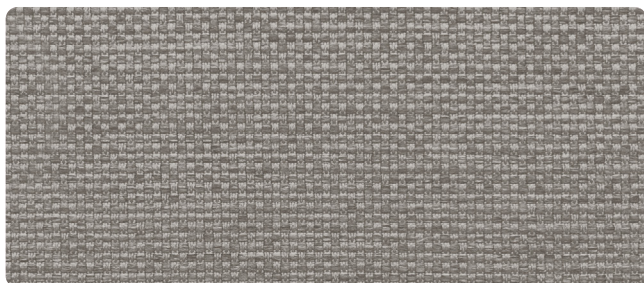
Standard commercial textiles



Limestone



Moonstone



Shale



Sapphire

OFS collection | Flora



Ashen



Bark



carolina
an OFS company

OFS collection | Terra

Pattern	OFS grade	Content	Finish	Repeat	Abrasion	Tackable
Terra	2	59% Polyester, 41% Repreve®	None	N/A (0.4" x 0.2")	60,000	Yes
Width	54"					
Flammability	These textiles meet all appropriate flammability requirements, including California Bulletin #117 and NFPA 260, and are compatible with California Bulletin #133.					
Maintenance	Contact Milliken at MillikenSpecialtyInteriors@milliken.com					
Samples	Please contact your local sales representative for samples.					
Reduce environmental impact	<ul style="list-style-type: none">• All fabrics are recyclable.• Terra contains Repreve® polyester yarn derived from recycled plastic bottles.• These fabrics are produced by Milliken Specialty Interiors and each yard produced is done with care and respect for our associates, our neighbors, our customers and the world we share. We are committed to developing environmentally-friendly products, using the minimum amount of chemistry required to achieve results and to minimizing waste.					

OFS collection | Flora

Pattern	OFS grade	Content	Finish	Repeat	Abrasion	Tackable
Flora	2	51% Repreve®, 49% Polyester	None	N/A (0.3" x 0.2")	60,000	Yes
Width	54"					
Flammability	These textiles meet all appropriate flammability requirements, including California Bulletin #117 and NFPA 260, and are compatible with California Bulletin #133.					
Maintenance	Contact Milliken at MillikenSpecialtyInteriors@milliken.com					
Samples	Please contact your local sales representative for samples.					
Reduce environmental impact	<ul style="list-style-type: none">• All fabrics are recyclable.• Flora contains Repreve® polyester yarn derived from recycled plastic bottles.• These fabrics are produced by Milliken Specialty Interiors and each yard produced is done with care and respect for our associates, our neighbors, our customers and the world we share. We are committed to developing environmentally-friendly products, using the minimum amount of chemistry required to achieve results and to minimizing waste.					



carolina
an OFS company