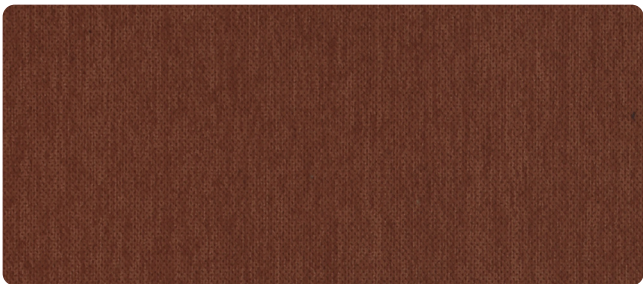
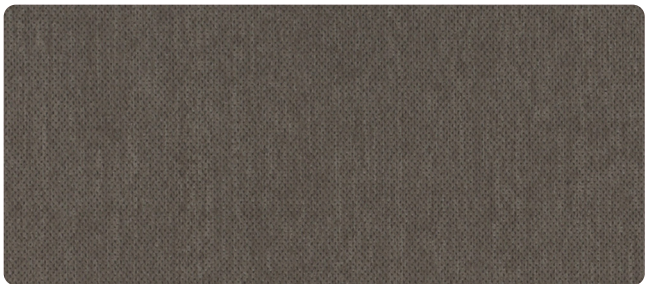




Oat



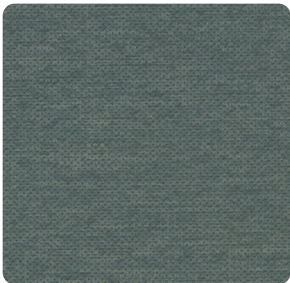
Auburn



Flint



Pine



Lamb's ear



Brass



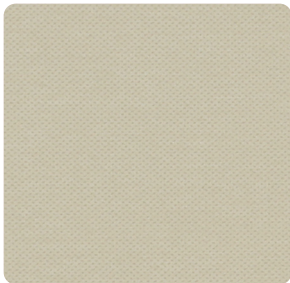
Harbor



Anchor



Hickory



Parchment



Fawn



OFS collection | Eton

Pattern	Content	Finish	Backing	Repeat	Abrasion	Tackable
Eton	98% Polyester, 2% nylon	High performance stain repellant	Polyester	N/A	78,000 Double rubs	Yes
Width	54"					
Flammability	This textile meets all appropriate flammability requirements, including CAL117-2013, NFPA 260, UFAC Class 1, and is compatible with Cal TB-133.					
Maintenance	W - Vacuum prior to cleaning. Can clean with water based cleaners, such as upholstery shampoo or foam from a mild detergent. Avoid over-saturating the fabric.					
Samples	Please contact your local sales representative or visit ofs.com for samples.					
Reduced environmental impact	<ul style="list-style-type: none">• GREENGUARD certified• PFAS free					



ACT Registered Certification Marks
Abrasion test results exceeding ACT Performance Guidelines are not an indicator of product lifespan.
Multiple factors affect fabric durability and appearance retention.



carolina
an OFS company



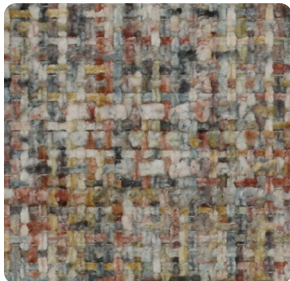
Echo



Myst



Whisper



Flare



Lustre



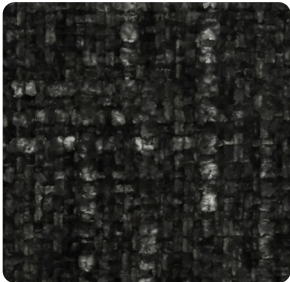
Glint



Veil



Aura



Haze

OFS collection | Halo

Pattern	Content	Repeat	Abrasion	Tackable
Halo	100% Polyester	N/A	87,000 Double rubs	Yes
Width	54"			
Flammability	This textile meets all appropriate flammability requirements, including CAL117-2013 and is compatible with CAL TB-133.			
Maintenance	W - Vacuum prior to cleaning. Can clean with water based cleaners, such as upholstery shampoo or foam from a mild detergent. Avoid over-saturating the fabric.			
Samples	Please contact your local sales representative or visit ofs.com for samples.			
Reduced environmental impact	<ul style="list-style-type: none">• OEKO TEX Standard 100• PFAS free			



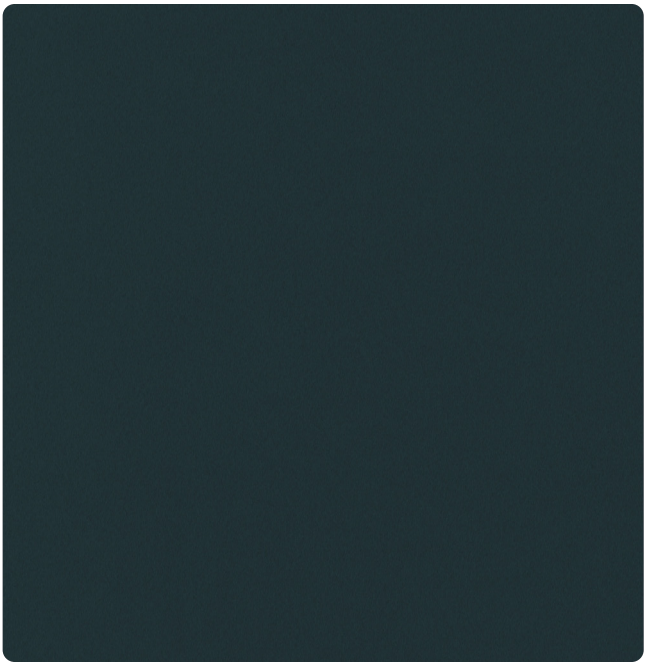
ACT Registered Certification Marks
Abrasion test results exceeding ACT Performance Guidelines are not an indicator of product lifespan.
Multiple factors affect fabric durability and appearance retention.



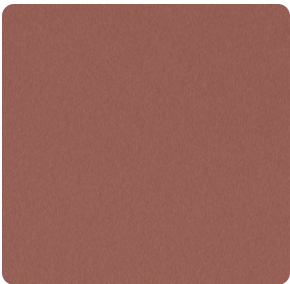
carolina
an OFS company

OFS collection | Haven

Standard commercial textiles



Tranquil



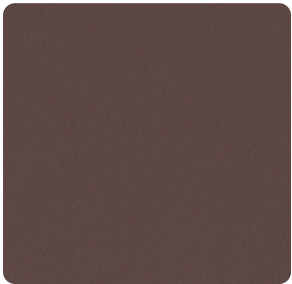
Bliss



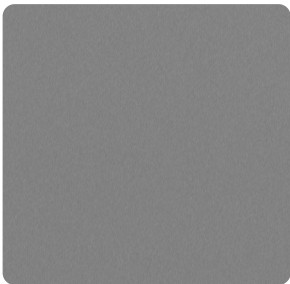
Serenity



Cocoon



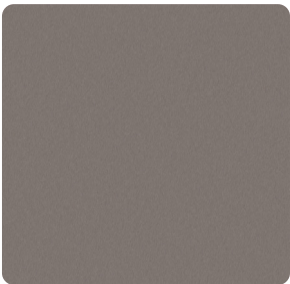
Lavender



Cloud



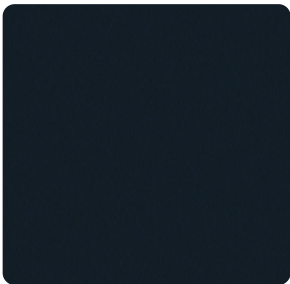
Glow



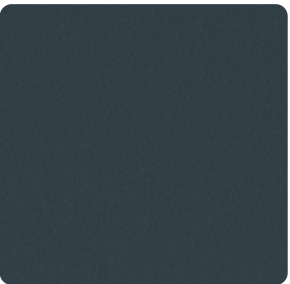
Drift



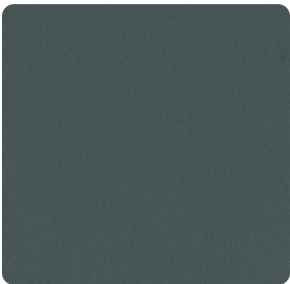
Whisper



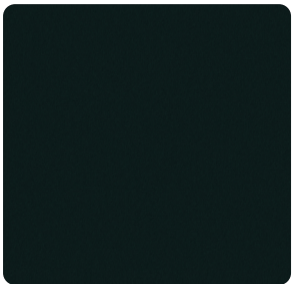
Dream



Grace



Harmony



Meadow



OFS collection | Haven

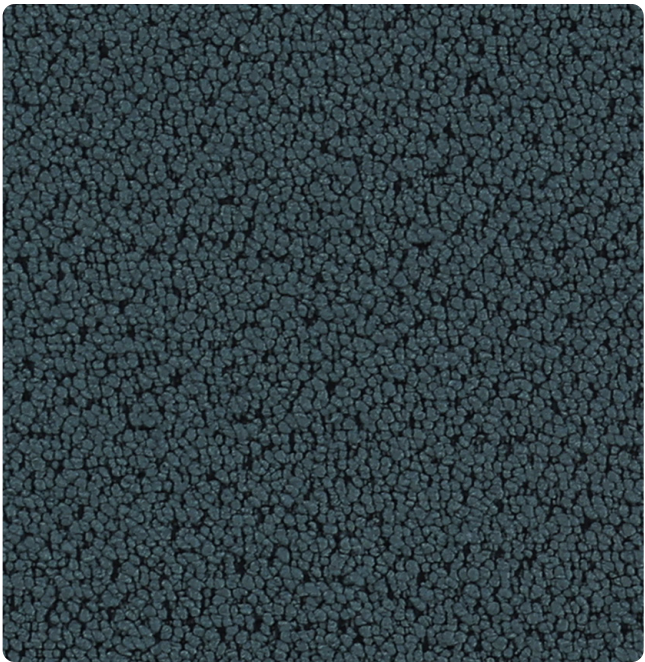
Pattern	Content	Backing	Repeat	Abrasion	Tackable
Haven	100% Post-consumer recycled polyester (GRS certified)	N/A	N/A	100,000 Double rubs	Yes
Width	54"				
Flammability	This textile meets all appropriate flammability requirements, including CAL117-2013 and is compatible with CAL TB-133.				
Maintenance	W - Vacuum prior to cleaning. Can clean with water based cleaners, such as upholstery shampoo or foam from a mild detergent. Avoid over-saturating the fabric.				
Samples	Please contact your local sales representative or visit ofs.com for samples.				
Reduced environmental impact	<ul style="list-style-type: none">• OEKO TEX Standard 100• PFAS free				



ACT Registered Certification Marks
Abrasion test results exceeding ACT Performance Guidelines are not an indicator of product lifespan.
Multiple factors affect fabric durability and appearance retention.



carolina
an OFS company



Current



Bluff



Basalt



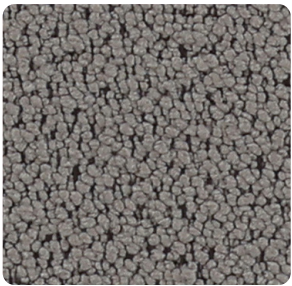
Mulch



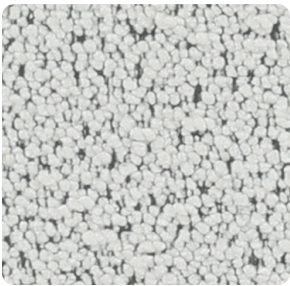
Slate



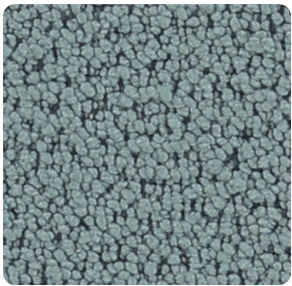
Bisque



Silt



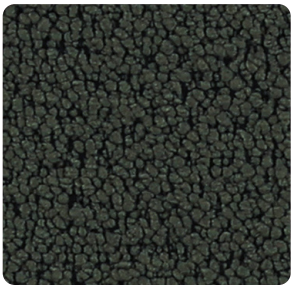
Alpine



Stillwater



Sable



Elm



Lapis

OFS collection | Jovy

Pattern	Content	Backing	Repeat	Abrasion	Tackable
Jovy	100% Post-consumer recycled biodegradable polyester	N/A	N/A	100,000 Double rubs	Yes
Width	54"				
Flammability	This textile meets all appropriate flammability requirements, including CAL117-2013, NFPA 260, and is compatible with CAL TB-133.				
Maintenance	WS - Clean with water based cleaning agents, foam or pure, water free solvents. Vacuuming or light brushing is recommended to prevent dust and soil buildup. May also be disinfected with hydrogen peroxide, alcohol, and quaternary ammonium (quat) based cleaners.				
Samples	Please contact your local sales representative or visit ofs.com for samples.				
Reduced environmental impact	<ul style="list-style-type: none">Clean Impact Textiles classified fabricBiodegrades in landfill conditions within 1,278 days (tested under ASTM D5511)				



ACT Registered Certification Marks
Abrasion test results exceeding ACT Performance Guidelines are not an indicator of product lifespan.
Multiple factors affect fabric durability and appearance retention.



carolina
an OFS company



Coastal



Briar



Heir



District



Royal



Harvest



Urban



Sunset



Dune



OFS collection | Montage

Pattern	Content	Backing	Repeat	Abrasion	Tackable
Montage	60% Polyester, 40% Repreve® post consumer recycled polyester	Acrylic	N/A	100,000 Double rubs	Yes
Width	54"				
Flammability	This textile meets all appropriate flammability requirements, including CAL117-2013 and is compatible with CAL TB-133.				
Maintenance	WS - Cleanable with solvent based furniture cleaner or soap and water or 10% diluted bleach solution if necessary.				
Samples	Please contact your local sales representative or visit ofs.com for samples.				
Note	Environmentally friendly production process. Made in the U.S.A.				
Reduced environmental impact	<ul style="list-style-type: none">• There are 28 bottles recycled per yard of fabric.• PFAS free				



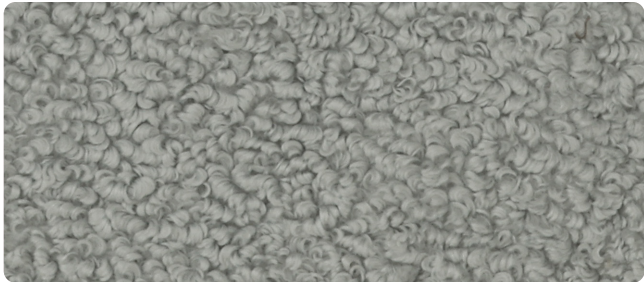
*ACT® Registered Certification Marks
Abrasion test results exceeding ACT
Performance Guidelines are not an indicator
of product lifespan. Multiple factors affect
fabric durability and appearance retention.



carolina
an OFS company



Artic



Down



Thorn



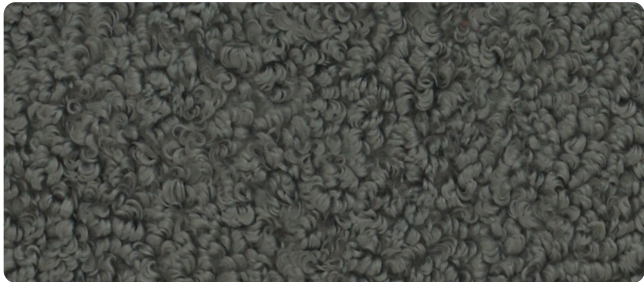
Flaxen



Doe



Midnight



Smoke



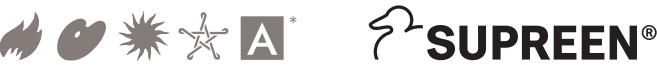
Otter



Truffle

OFS collection | Monte

Pattern	Content	Backing/finish	Repeat	Abrasion	Tackable
Monte	94% Polyester, 4% TPU, 2% silicone	Supreen	N/A	100,000 Double rubs	No
Width	54"				
Flammability	This textile meets all appropriate flammability requirements, including CAL117-2013 and is compatible with CAL TB-133.				
Maintenance	WS - Cleanable with solvent based furniture cleaner or soap and water or 10% diluted bleach solution if necessary.				
Samples	Please contact your local sales representative or visit ofs.com for samples.				
Note	Environmentally friendly production process.				
Reduced environmental impact	<ul style="list-style-type: none">• No added flame retardant chemicals - AB2998 compliant• No added anti-bacterial / anti-microbial chemicals• PFAS free• Lead / heavy metal free• BPA free / tris free / formaldehyde free• Does not contain conflict minerals				



ACT Registered Certification Marks
Abrasion test results exceeding ACT Performance Guidelines are not an indicator of product lifespan.
Multiple factors affect fabric durability and appearance retention.



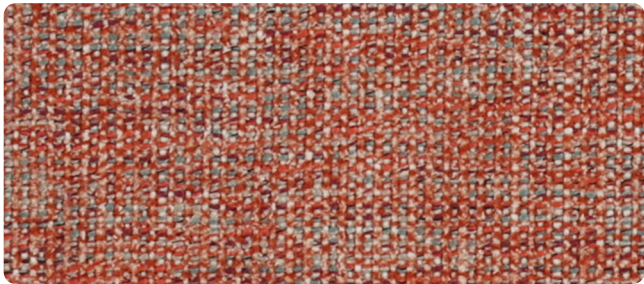
carolina
an OFS company



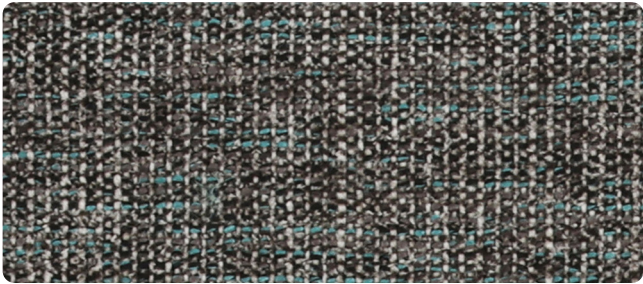
Aura



Stellar



Gala



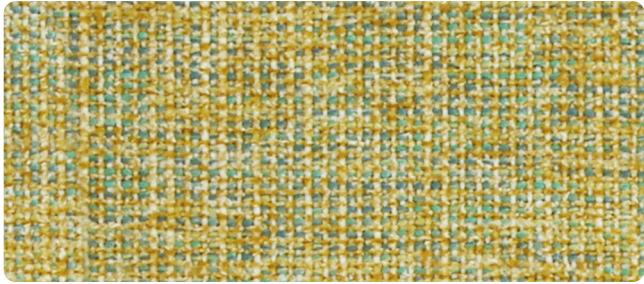
Astra



Comet




Twill



Lumi



OFS collection | Neb

Pattern	Content	Finish	Repeat	Abrasion	Tackable
Neb	88% Polyester, 7% viscose, 5% acrylic	Aquaclean + Safeguard	N/A	100,000 Double rubs	Yes
Width	55"				
Flammability	This textile meets all appropriate flammability requirements, including CAL117-2013, NFPA 260, UFAC class 1, and is compatible with CAL TB-133.				
Maintenance	W - Vacuum prior to cleaning. Can clean with water based cleaners, such as upholstery shampoo or foam from a mild detergent. Avoid over-saturating the fabric. Scan QR code for additional stain cleaning videos.				
Samples	Please contact your local sales representative or visit ofs.com for samples.				
Reduced environmental impact	<ul style="list-style-type: none">• GRS certified• OEKO-TEX standard 100• IMO-B certified• PFAS free				



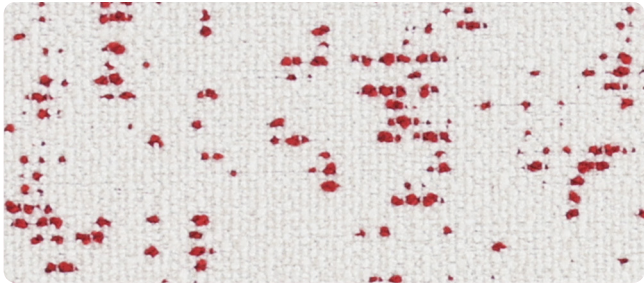
ACT Registered Certification Marks
Abrasion test results exceeding ACT Performance Guidelines are not an indicator of product lifespan.
Multiple factors affect fabric durability and appearance retention.



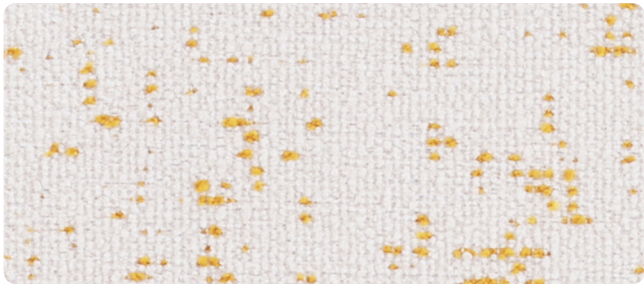
carolina
an OFS company



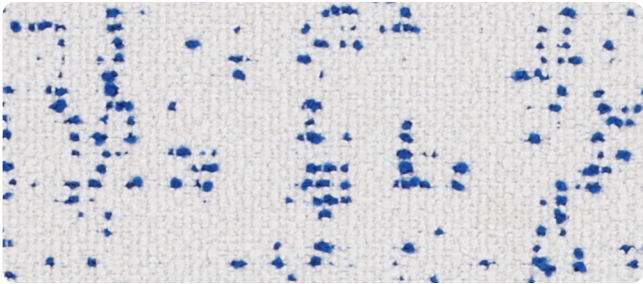
Star



Art



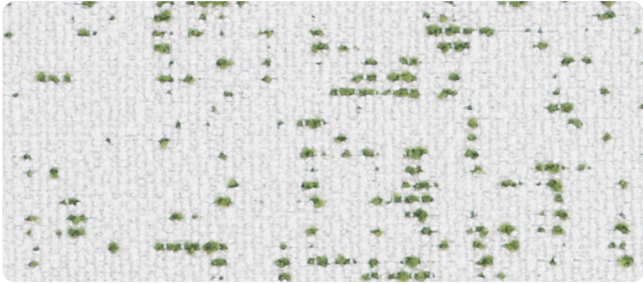
Corn



Culture




Quiz



Up

OFS collection | Pop

Pattern	Content	Finish	Repeat	Abrasion	Tackable
Pop	95% Post-consumer recycled polyester, 4% nylon, 1% polyester	Aquaclean + Safeguard	N/A	84,000 Double rubs	No
Width	55"				
Flammability	This textile meets all appropriate flammability requirements, including CAL117-2013, NFPA 260, UFAC class 1, and is compatible with CAL TB-133.				
Maintenance	W - Vacuum prior to cleaning. Can clean with water based cleaners, such as upholstery shampoo or foam from a mild detergent. Avoid over-saturating the fabric. Scan QR code for additional stain cleaning videos.				
Samples	Please contact your local sales representative or visit ofs.com for samples.				
Reduced environmental impact	<ul style="list-style-type: none">• GRS certified• OEKO-TEX standard 100• IMO-B certified• PFAS free				



ACT Registered Certification Marks
Abrasion test results exceeding ACT Performance Guidelines are not an indicator of product lifespan.
Multiple factors affect fabric durability and appearance retention.



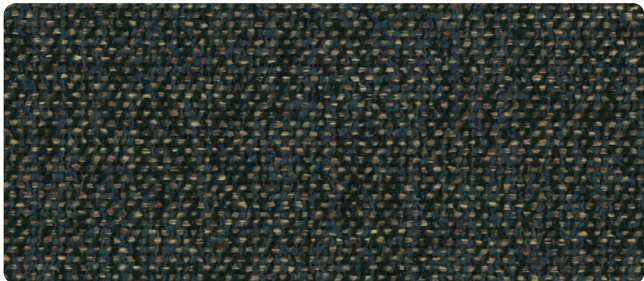
carolina
an OFS company



Denali



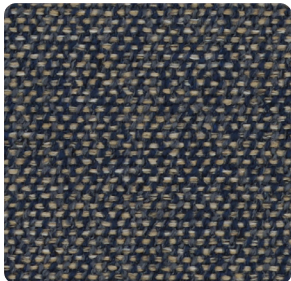
Yellowstone



Sequoia



White Sands



Olympic



Everglades



Gunnison



Redwood



Cascades



Rainer



OFS collection | Roam

Pattern	OFS grade	Content	Finish	Repeat	Abrasion	Tackable
Roam	2	60% Polyester, 40% post consumer recycled polyester	N/A	N/A	100,000	Yes
Width	54"					
Flammability	These textiles meet all appropriate flammability requirements, including California Bulletin #117 and NFPA 260, and are compatible with California Bulletin #133.					
Maintenance	WS - Cleanable with solvent based furniture cleaner or soap and water or 10% diluted bleach solution if necessary.					
Samples	Please contact your local sales representative or visit ofs.com for samples.					
Note	Environmentally friendly production process. Made in the USA.					
Reduced environmental impact	<ul style="list-style-type: none">All fabrics are recyclable.There are 22 bottles recycled per yard of fabric.					



ACT Registered Certification Marks
Abrasion test results exceeding ACT Performance Guidelines are not an indicator of product lifespan.
Multiple factors affect fabric durability and appearance retention.



carolina
an OFS company

OFS collection | Leather

West



Bandera



Bodie



Cody



Laredo



Silverton



Durango

Hyde



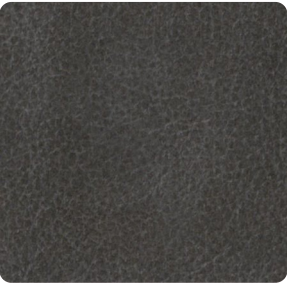
Bronco



Cedar



Forge



Gunmetal

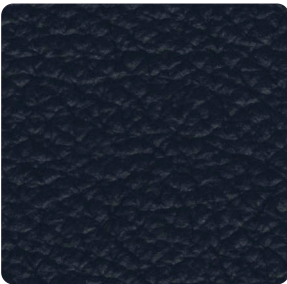


Tobacco

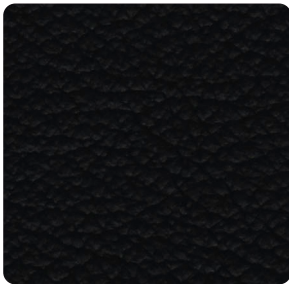


Tumbleweed

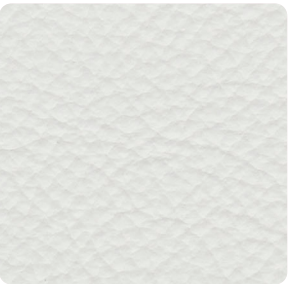
Cielo



Azul



Noche



Nubé



Arena



Gris



Horizonte



Marron



Piedra



Roca

OFS collection | Leather

Specialty textiles

OFS collection | Leather

Pattern	Thickness	Finish
West	1.0 - 1.2 mm	Finished corrected top grain
Hyde	.9 - 1.1 mm	Semi-aniline
Cielo	1.1 - 1.3 mm	Finished corrected top grain
Note	Natural characteristics such as healed scars, insect marks, and other elements of nature may be present on each hide.	



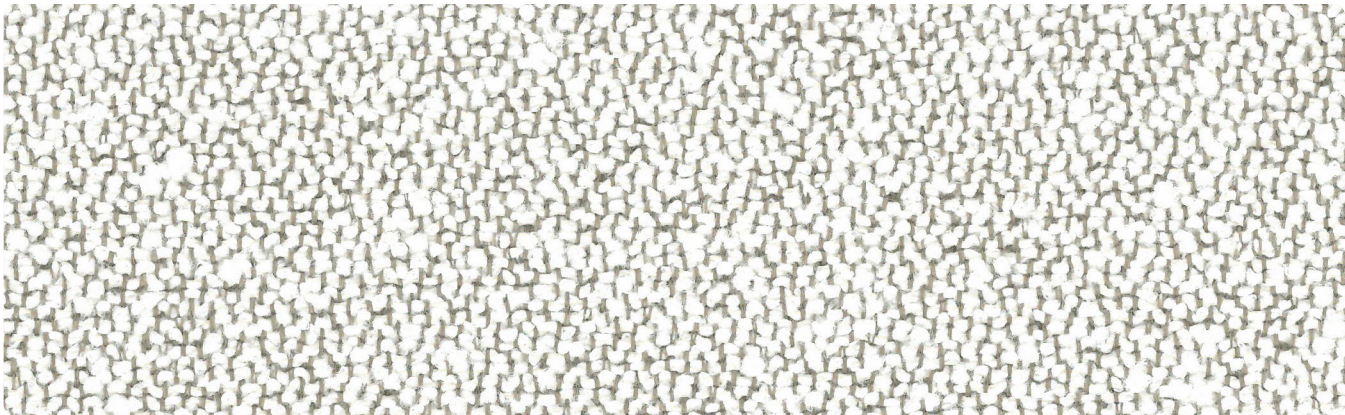
ACT Registered Certification Marks
Abrasion test results exceeding ACT Performance
Guidelines are not an indicator of product lifespan.
Multiple factors affect fabric durability and
appearance retention.



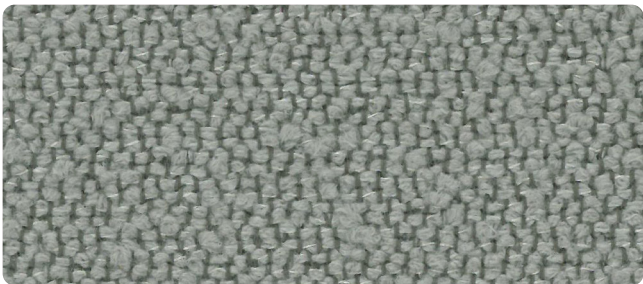
carolina
an OFS company



carolina
an OFS company



Cotton



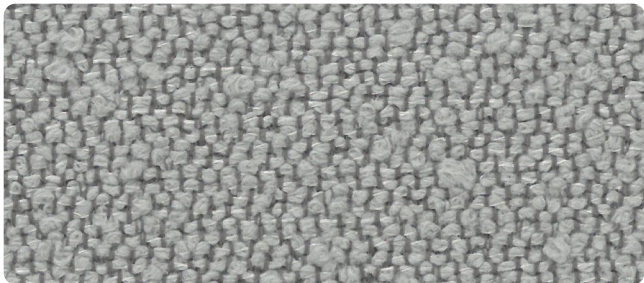
Clove



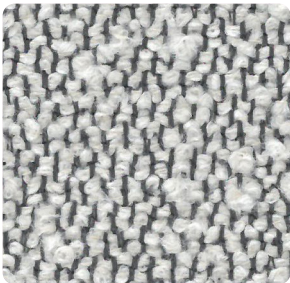
Spice



Sand



Fossil



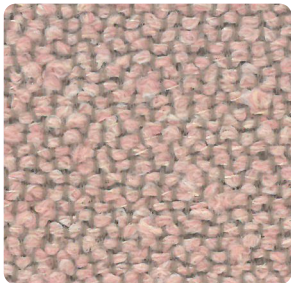
Ash



Sea Salt



Night



Dusk

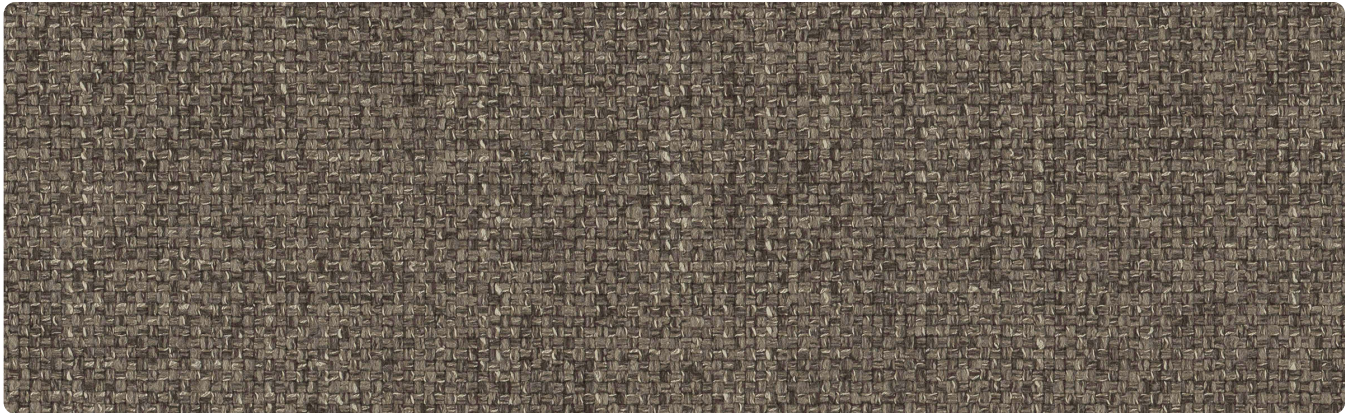


OFS collection | Allure

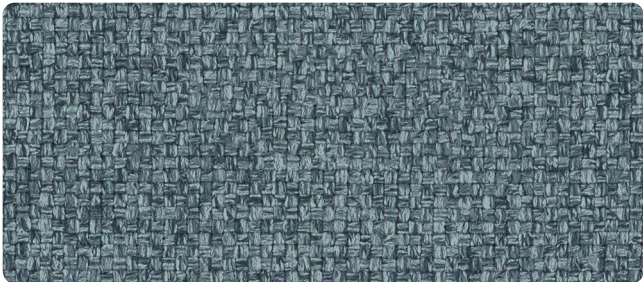
Pattern	Content	Finish	Repeat	Abrasion	Tackable
Allure	51% Post-consumer recycled polyester, 49% polyester	N/A	N/A	100,000	Yes
Width	54"				
Flammability	This textile meets all appropriate flammability requirements, including CAL117-2014 and NFPA 260, and is compatible with CAL TB-133.				
Maintenance	SW - Cleanable with solvent based furniture cleaner or soap and water or 10% diluted bleach solution if necessary.				
Samples	Please contact your local sales representative or visit ofs.com for samples.				
Note	Environmentally friendly production process. Made in the USA.				
Reduced environmental impact	<ul style="list-style-type: none">• All fabrics are recyclable.• There are 31 bottles recycled per yard of fabric.				



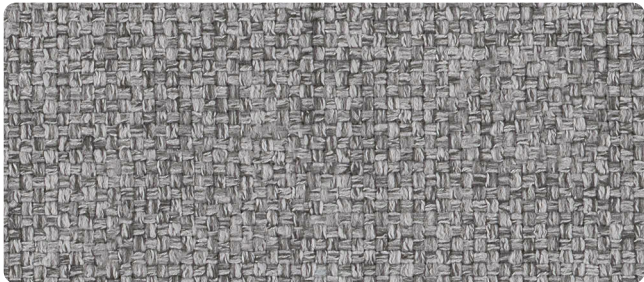
carolina
an OFS company



Ridge



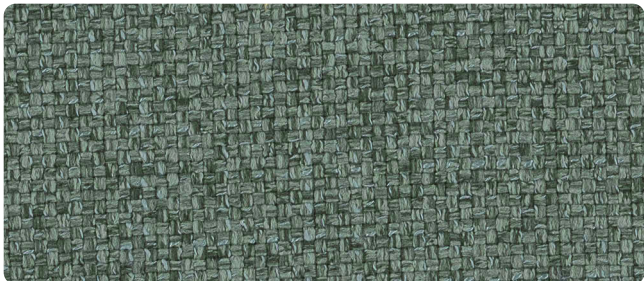
River



Stratus



Crow



Jade



Cavern



Ray



Gravel



Obrina

OFS collection | Arbor

Pattern	Content	Finish	Backing	Repeat	Abrasion	Tackable
Arbor	85% Polyester, 15% viscose rayon	N/A	Acrylic	N/A	250,000 Double rubs	Yes
Width	54"					
Flammability	This textile meets all appropriate flammability requirements, including CAL117-2013, NFPA 260, UFAC class 1, ASTM E84, and is compatible with CAL TB-133.					
Maintenance	WS - Cleanable with water based cleaner.					
Samples	Please contact your local sales representative or visit ofs.com for samples.					
Reduced environmental impact	<ul style="list-style-type: none">• GREENGUARD certified• NSF 336 compliant					



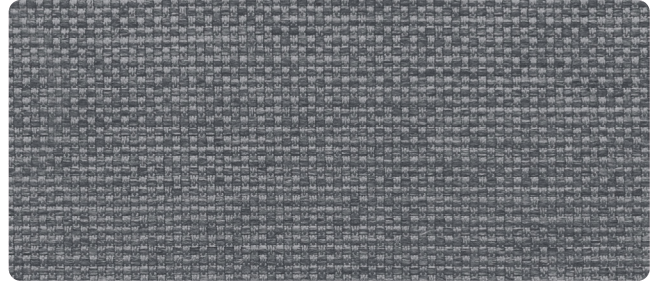
carolina
an OFS company

OFS collection | Terra

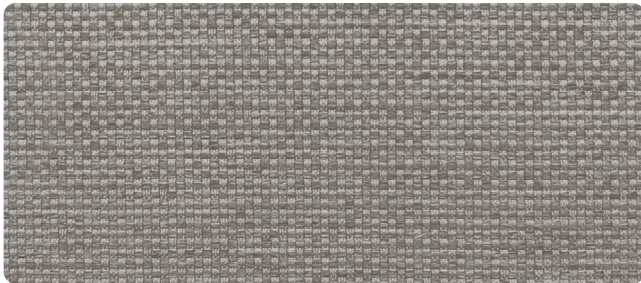
Standard commercial textiles



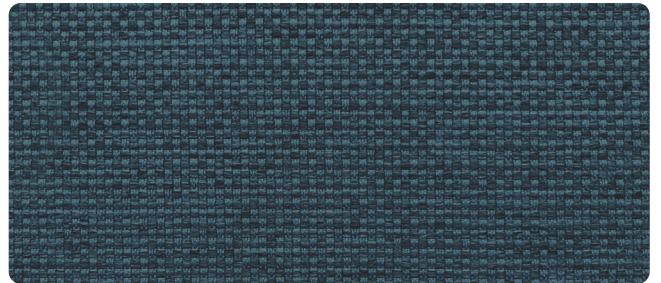
Limestone



Moonstone

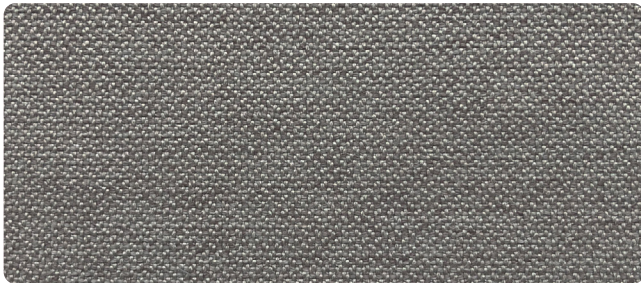


Shale



Sapphire

OFS collection | Flora



Ashen



Bark



carolina
an OFS company

OFS collection | Terra

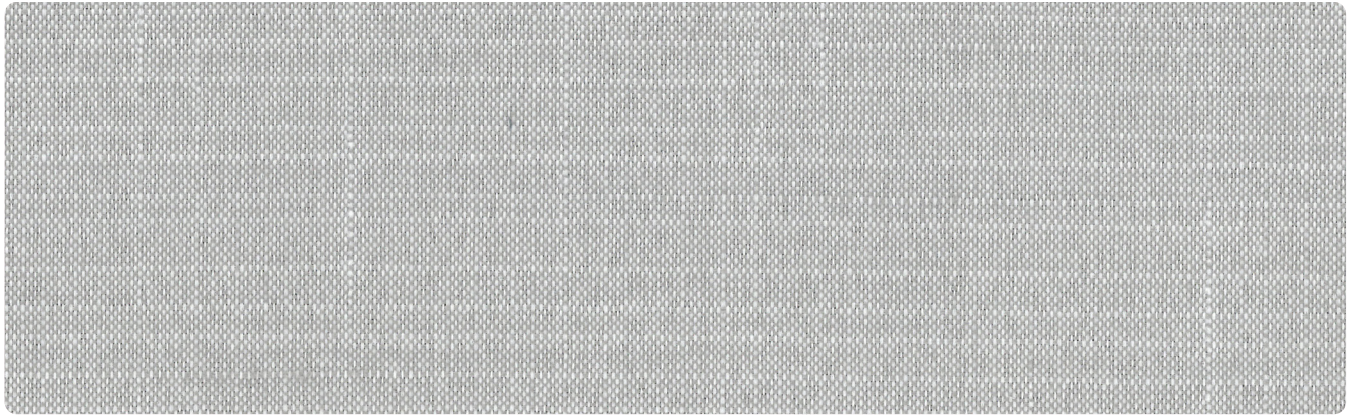
Pattern	OFS grade	Content	Finish	Repeat	Abrasion	Tackable
Terra	2	59% Polyester, 41% Repreve®	None	N/A (0.4" x 0.2")	60,000	Yes
Width	54"					
Flammability	These textiles meet all appropriate flammability requirements, including California Bulletin #117 and NFPA 260, and are compatible with California Bulletin #133.					
Maintenance	Contact Milliken at MillikenSpecialtyInteriors@milliken.com					
Samples	Please contact your local sales representative for samples.					
Reduce environmental impact	<ul style="list-style-type: none">• All fabrics are recyclable.• Terra contains Repreve® polyester yarn derived from recycled plastic bottles.• These fabrics are produced by Milliken Specialty Interiors and each yard produced is done with care and respect for our associates, our neighbors, our customers and the world we share. We are committed to developing environmentally-friendly products, using the minimum amount of chemistry required to achieve results and to minimizing waste.					

OFS collection | Flora

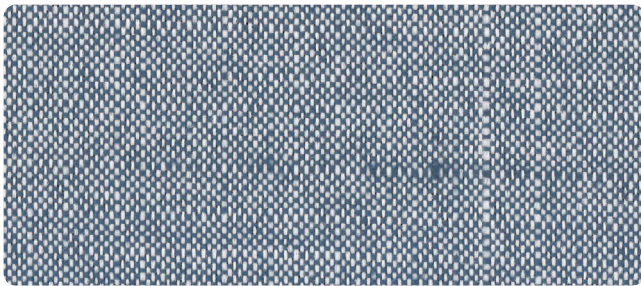
Pattern	OFS grade	Content	Finish	Repeat	Abrasion	Tackable
Flora	2	51% Repreve®, 49% Polyester	None	N/A (0.3" x 0.2")	60,000	Yes
Width	54"					
Flammability	These textiles meet all appropriate flammability requirements, including California Bulletin #117 and NFPA 260, and are compatible with California Bulletin #133.					
Maintenance	Contact Milliken at MillikenSpecialtyInteriors@milliken.com					
Samples	Please contact your local sales representative for samples.					
Reduce environmental impact	<ul style="list-style-type: none">• All fabrics are recyclable.• Flora contains Repreve® polyester yarn derived from recycled plastic bottles.• These fabrics are produced by Milliken Specialty Interiors and each yard produced is done with care and respect for our associates, our neighbors, our customers and the world we share. We are committed to developing environmentally-friendly products, using the minimum amount of chemistry required to achieve results and to minimizing waste.					



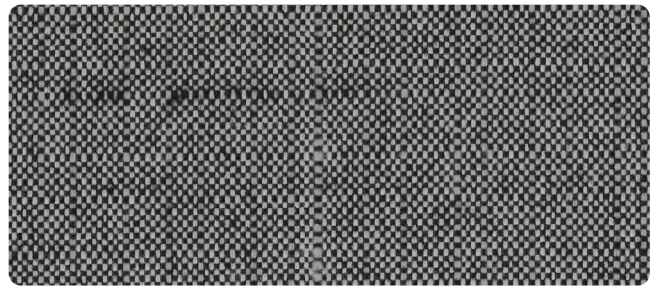
carolina
an OFS company



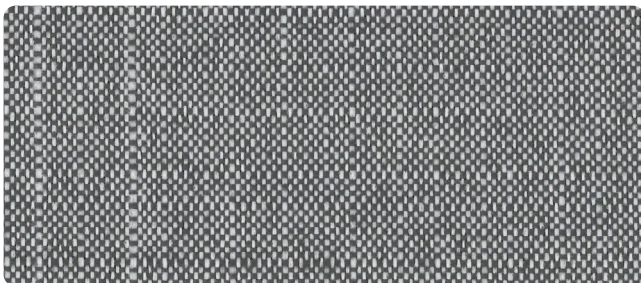
Windsor



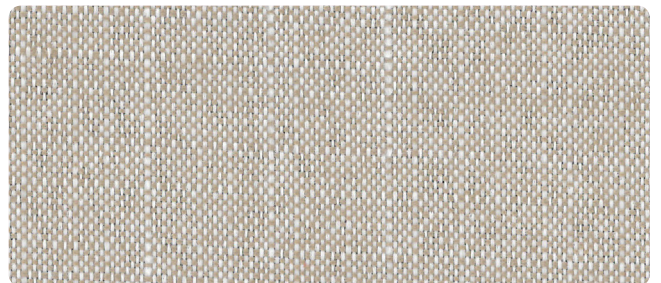
Dapper



Tux



Hoxton



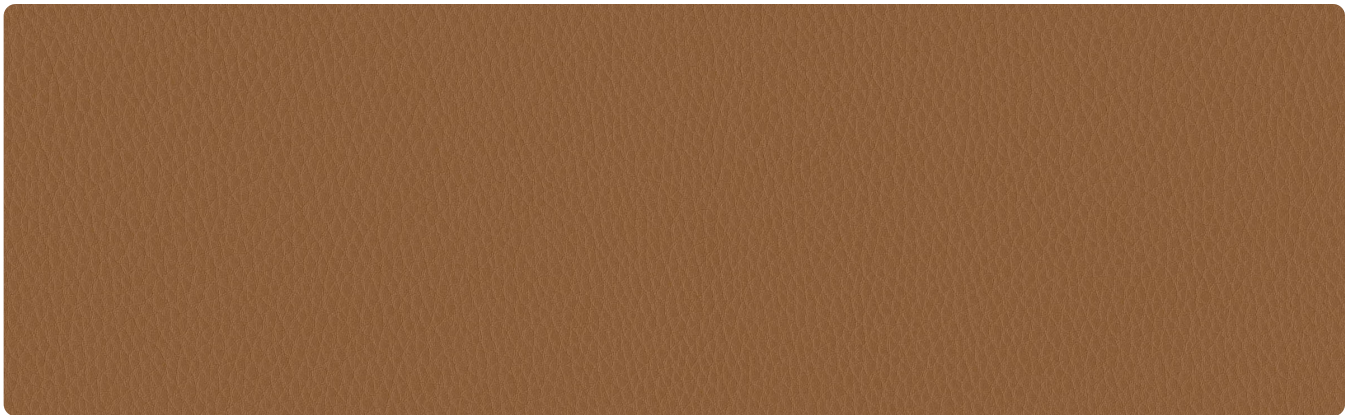
Tweed

OFS collection | Gatsby

Pattern	Content	Finish	Repeat	Abrasion	Tackable
Gatsby	51% Post consumer recycled polyester, 49% polyester	N/A	N/A	50,000	Yes
Width	54"				
Flammability	This textile meets all appropriate flammability requirements, including CAL117-2013 and is compatible with CAL TB-133.				
Maintenance	SW - Cleanable with solvent based furniture cleaner or soap and water or 10% diluted bleach solution if necessary.				
Samples	Please contact your local sales representative or visit ofs.com for samples.				
Note	Environmentally friendly production process. Made in the USA.				
Reduced environmental impact	<ul style="list-style-type: none">• All fabrics are recyclable.• There are 20 bottles recycled per yard of fabric.				



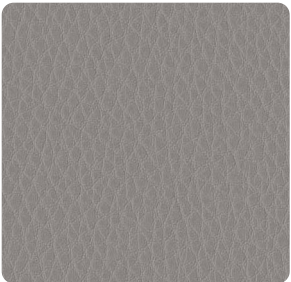
carolina
an OFS company



Verse



Cannon



Reverb



Melody



Bass



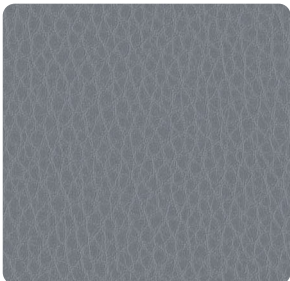
Amp



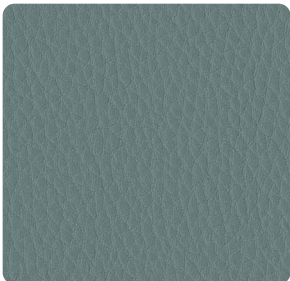
Folk



Rhyme



Glee



Indie



Mic



Alto

OFS collection | Lyric

Pattern	Content	Finish	Backing	Repeat	Abrasion	Tackable
Lyric	100% Clean vinyl, phthalate free	Protective overcoat	Polyester	N/A	500,000 Double rubs	No
Width	54"					
Flammability	This textile meets all appropriate flammability requirements, including CAL117-2013, NFPA 260, UFAC class 1, and is compatible with CAL TB-133.					
Maintenance	W - Cleanable with water based cleaner or bleach cleanable with 10% diluted bleach solution if necessary.					
Samples	Please contact your local sales representative or visit ofs.com for samples.					
Reduced environmental impact	<ul style="list-style-type: none">• Single source fiber content• GREENGUARD certified• NSF 336 compliant					



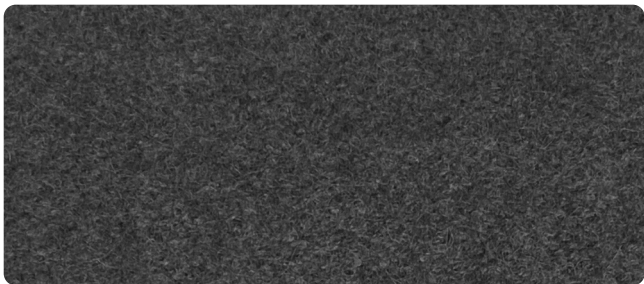
carolina
an OFS company



Pearl



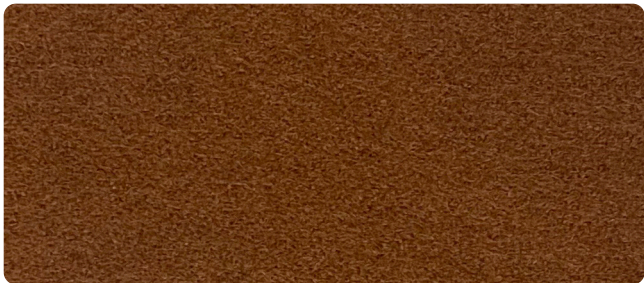
Beau



Millie



Dolly



Amber

OFS collection | Shep

Pattern	OFS grade	Content	Finish	Repeat	Abrasion	Tackable	Acoustic performance
Shep	3	100% Wool	N/A	N/A	ASTM D4966 40,000 cycles Martindale method	Yes	ASTM C423 1.05 NRC 1.07 SAA
Width	54"						
Flammability	These textiles meet all appropriate flammability requirements, including California Bulletin #117-2013 and NFPA 260 + UFAC Class 1, ASTM E84, and are compatible with California Bulletin #133.						
Maintenance	W — Water-based cleaning agents only						
Samples	Please contact your local sales representative for samples.						
Note	<p>Non-mulesed wool</p> <p>Certified Oeko-Tex 100 Standard, global certification for environmental and health consciousness.</p> <p>Colors Pearl and Dolly are created by blending the natural wool from the fleece of sheep with black, brown, and white wool – they are not dyed. This is the most environmentally friendly “coloring” process possible, simply using the natural hair in a blend to create a fabric of rich, multi-color hues.</p>						
Reduce environmental impact	<ul style="list-style-type: none">• Fully Biodegradable• 100% Natural wool						



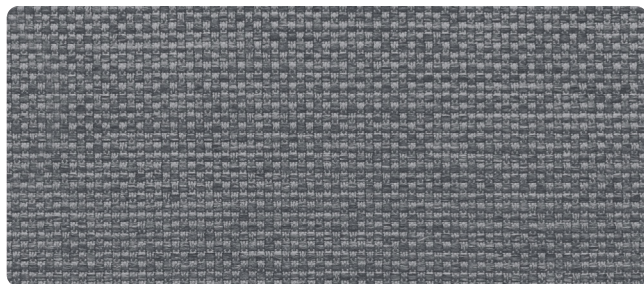
carolina
an OFS company

OFS collection | Terra

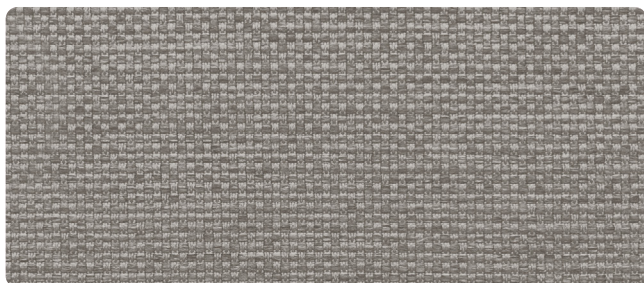
Standard commercial textiles



Limestone



Moonstone



Shale



Sapphire

OFS collection | Flora



Ashen



Bark



carolina
an OFS company

OFS collection | Terra

Pattern	OFS grade	Content	Finish	Repeat	Abrasion	Tackable
Terra	2	59% Polyester, 41% Repreve®	None	N/A (0.4" x 0.2")	60,000	Yes
Width	54"					
Flammability	These textiles meet all appropriate flammability requirements, including California Bulletin #117 and NFPA 260, and are compatible with California Bulletin #133.					
Maintenance	Contact Milliken at MillikenSpecialtyInteriors@milliken.com					
Samples	Please contact your local sales representative for samples.					
Reduce environmental impact	<ul style="list-style-type: none">• All fabrics are recyclable.• Terra contains Repreve® polyester yarn derived from recycled plastic bottles.• These fabrics are produced by Milliken Specialty Interiors and each yard produced is done with care and respect for our associates, our neighbors, our customers and the world we share. We are committed to developing environmentally-friendly products, using the minimum amount of chemistry required to achieve results and to minimizing waste.					

OFS collection | Flora

Pattern	OFS grade	Content	Finish	Repeat	Abrasion	Tackable
Flora	2	51% Repreve®, 49% Polyester	None	N/A (0.3" x 0.2")	60,000	Yes
Width	54"					
Flammability	These textiles meet all appropriate flammability requirements, including California Bulletin #117 and NFPA 260, and are compatible with California Bulletin #133.					
Maintenance	Contact Milliken at MillikenSpecialtyInteriors@milliken.com					
Samples	Please contact your local sales representative for samples.					
Reduce environmental impact	<ul style="list-style-type: none">• All fabrics are recyclable.• Flora contains Repreve® polyester yarn derived from recycled plastic bottles.• These fabrics are produced by Milliken Specialty Interiors and each yard produced is done with care and respect for our associates, our neighbors, our customers and the world we share. We are committed to developing environmentally-friendly products, using the minimum amount of chemistry required to achieve results and to minimizing waste.					



carolina
an OFS company