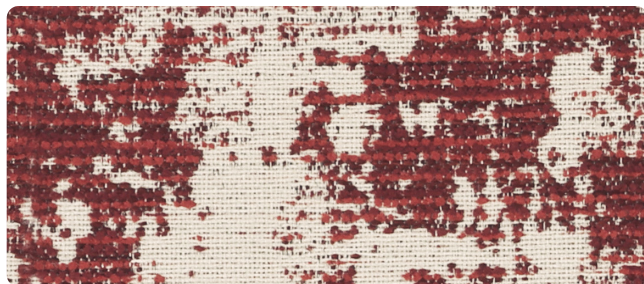


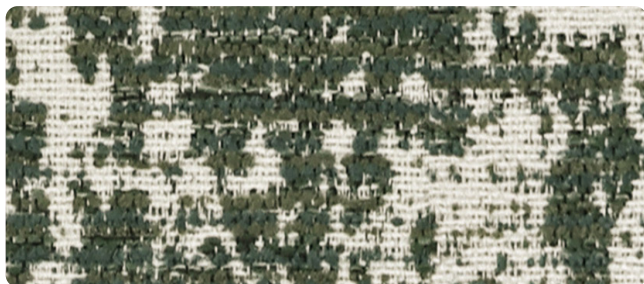
Cloudspill



Bordeaux



Fog



Mossfade



Inkwell



Nocturne

OFS collection | Umbra

| Pattern | Content | Backing | Repeat | Abrasion | Tackable |
|--------------|---|---------|---------------|------------------------|----------|
| Umbra | 48% Olefin, 27% polyester, 25% polyester (UV) | Acrylic | 28.5"h x 14"v | 100,000 Double rubs | Yes |
| Width | 55" | | | | |
| Flammability | This textile meets all appropriate flammability requirements, including CAL117-2013, UFAC class 1, and is compatible with CAL TB-133. | | | | |
| Maintenance | WS - Cleanable with solvent based furniture cleaner or soap and water or 10% diluted bleach solution if necessary. | | | | |
| Samples | Please contact your local sales representative or visit ofs.com for samples. | | | | |
| Note | Environmentally friendly production process. Made in the USA. | | | | |



ACT Registered Certification Marks

Abrasion test results exceeding ACT Performance Guidelines are not an indicator of product lifespan. Multiple factors affect fabric durability and appearance retention.



carolina

an OFS company