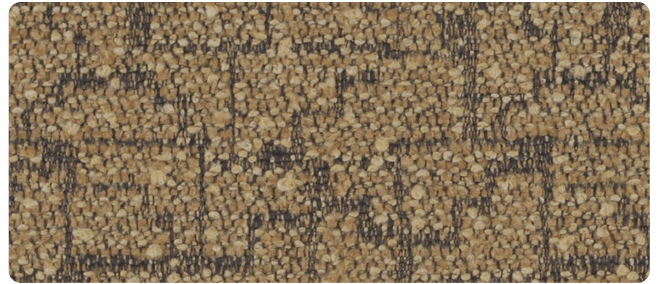
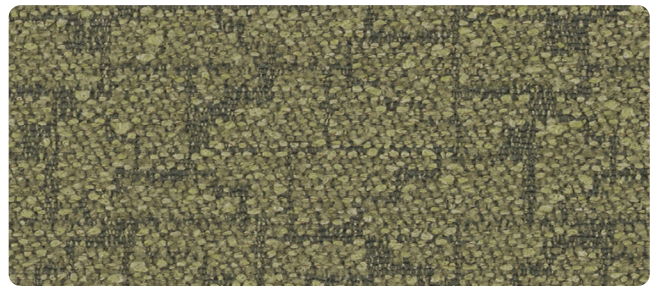


Glint



Grotto



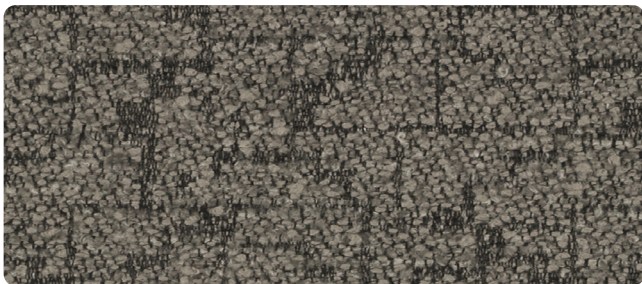
Vale



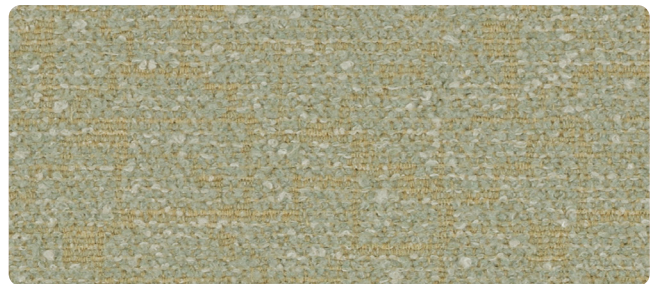
Lilt



Quell



Loam



Parch

OFS collection | Patter

| Pattern | Content | Backing | Repeat | Abrasion | Tackable |
|-------------------------------------|---|---------|-------------|------------------------|----------|
| Patter | 72% Repreve® post-consumer recycled polyester, 28% polyester | Acrylic | 4"h x 3.8"v | 100,000 Double rubs | Yes |
| Width | 54" | | | | |
| Flammability | This textile meets all appropriate flammability requirements, including CAL117-2013, NFPA 260, UFAC class 1, and is compatible with CAL TB-133. | | | | |
| Maintenance | WS - Cleanable with solvent based furniture cleaner or soap and water or 10% diluted bleach solution if necessary. | | | | |
| Samples | Please contact your local sales representative or visit ofs.com for samples. | | | | |
| Note | Environmentally friendly production process. Made in the USA. | | | | |
| Reduced environmental impact | <ul style="list-style-type: none"> • There are 47 bottles recycled per yard of fabric. • PFAS free | | | | |



ACT Registered Certification Marks
 Abrasion test results exceeding ACT
 Performance Guidelines are not an indicator
 of product lifespan. Multiple factors affect
 fabric durability and appearance retention.



carolina
 an OFS company