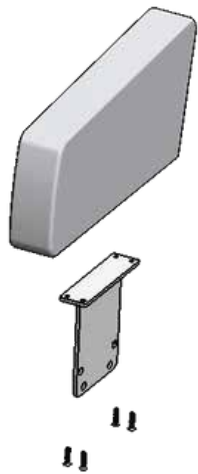


Tools Required:
Impact Screwdriver
#3 Phillips Screwdriver Bit
Ruler or Straight Edge
Marker
Scissors or Utility Knife
Hole Pattern Template (cut from side of shipping carton)

Notes:

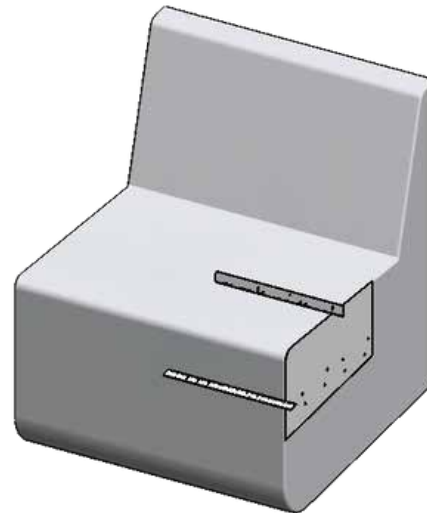
1. Hole pattern template is located on shipping carton.
2. Use a straight edge to align hole pattern template to top and front of seat.
3. Mark ARM holes with a marker.
4. Use ice pick to locate holes behind fabric. Cut a small X over each hole.
5. Attach bracket with provided screws.

Locate template flush with top and front of the seat using a ruler or similar straight edge.

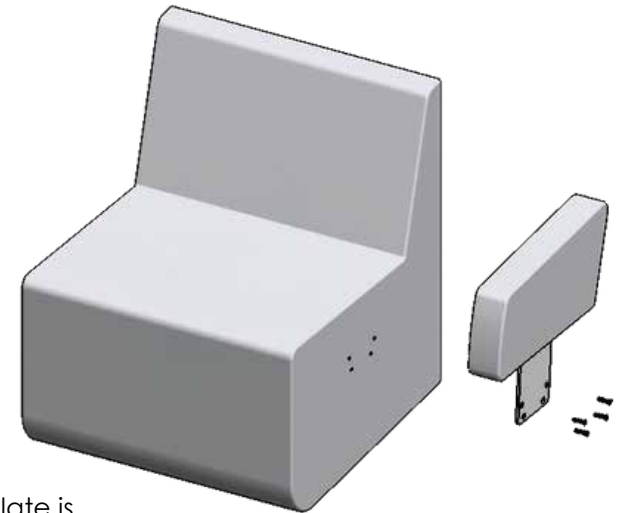


Bracket orientation determines a left or right arm.

4x 1/4-20 X 1.25 PHILLIPS FLAT HEAD from HK-290



Hole pattern template is cut from shipping carton.

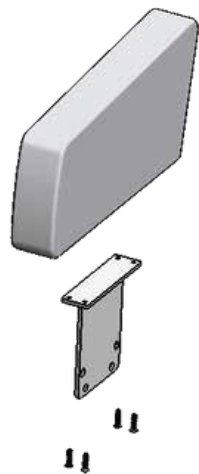


4x 1/4-20 X 1.25 PHILLIPS FLAT HEAD from HK-290

Tools Required:
Impact Screwdriver
#3 Phillips Screwdriver Bit
Ruler or Straight Edge
Marker
Scissors or Utility Knife
Hole Pattern Template (cut from side of shipping carton)
Level

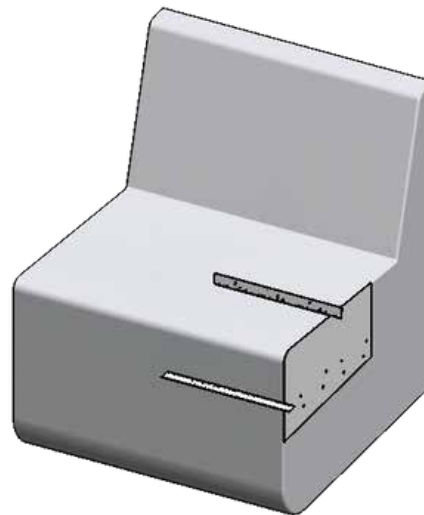
Notes:

1. Hole pattern template is located on shipping carton.
2. Use a straight edge to align hole pattern template to top and front of seat.
3. Mark ARM holes with a marker.
4. Install one screw from HK-297. Level arm front to back, then install remaining screws.



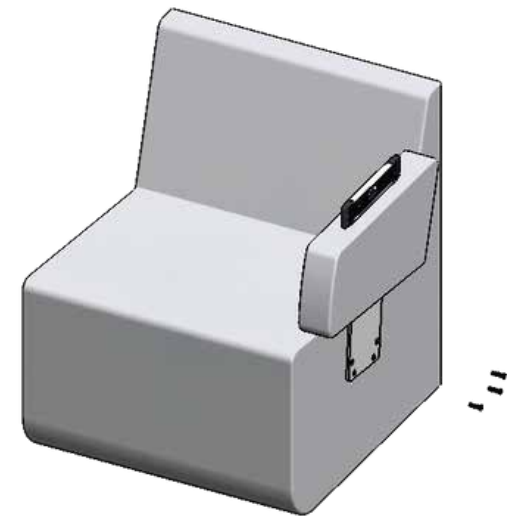
Bracket orientation
determines a left or
right arm.

4x 1/4-20 X 1.25 PHILLIPS FLAT HEAD from HK-290



Locate template flush with top and front of
the seat using a ruler or similar straight edge.

Level



Hole pattern template is
cut from shipping carton.

4X #12 x 1.25" PHILLIPS FLAT
HEAD SCREW FROM HK-297