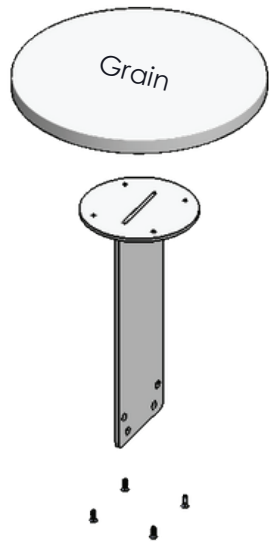


Tools Required:  
Impact Screwdriver  
#3 Phillips Screwdriver Bit  
Ruler or Straight Edge  
Marker  
Scissors or Utility Knife  
Hole Pattern Template (cut from side of shipping carton)

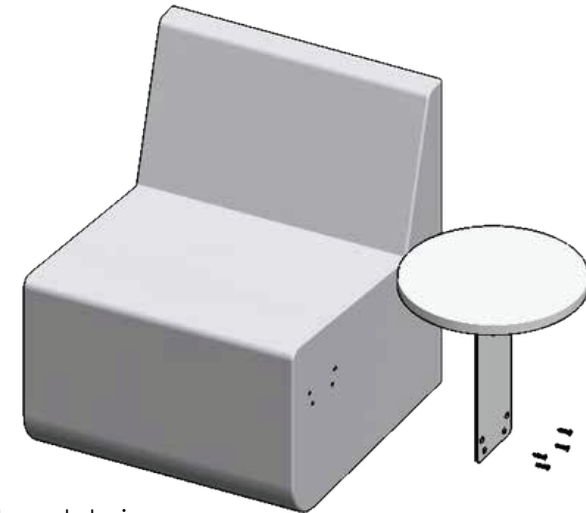
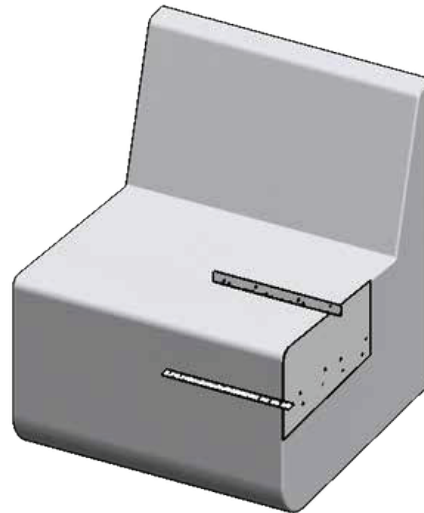
Notes:

1. Hole pattern template is located on shipping carton.
2. Use a straight edge to align HOLE PATTERN TEMPLATE to top and front of seat.
3. Mark TABLET holes with a marker.
4. Use ice pick to locate holes behind fabric. Cut a small X over each hole.
5. Attach bracket with provided screws.

Locate template flush with top and front of the seat using a ruler or similar straight edge.



WOOD TOP - 1/4-20 X .75  
PHILLIPS FLAT HEAD FROM HK-291  
or  
SOLID SURFACE TOP - 1/4-20 X .75  
PHILLIPS FLAT HEAD FROM HK-292



Hole pattern template is cut from shipping carton.

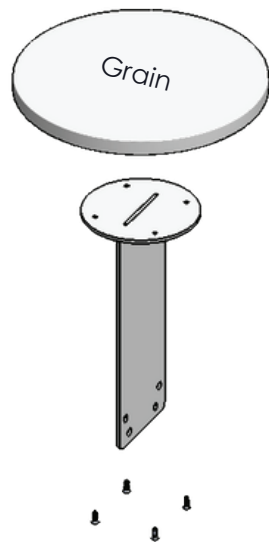
4X 1/4-20 X 1.25 PHILLIPS FLAT HEAD  
FROM HK291 OR HK-292

**Tools Required:**

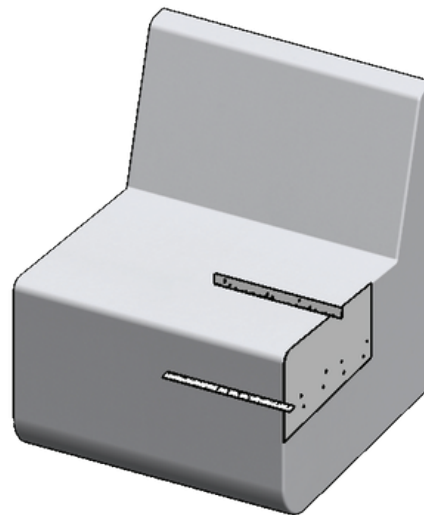
Impact Screwdriver  
#3 Phillips Screwdriver Bit  
Ruler or Straight Edge  
Marker  
Scissors or Utility Knife  
Hole Pattern Template (cut from side of shipping carton)  
Level

**Notes:**

1. Hole pattern template is located on shipping carton.
2. Use a straight edge to align HOLE PATTERN TEMPLATE to top and front of seat.
3. Mark TABLET holes with a marker.
4. Install one screw from HK-297. Level tablet front to back, then install remaining screws.

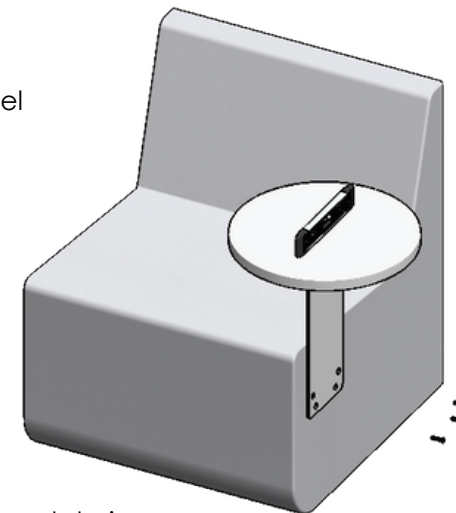


WOOD TOP - 1/4-20 X .75  
PHILLIPS FLAT HEAD FROM HK-291  
or  
SOLID SURFACE TOP - 1/4-20 X .75  
PHILLIPS FLAT HEAD FROM HK-292



Locate template flush with top and front of the seat using a ruler or similar straight edge.

Level



Hole pattern template is cut from shipping carton.

4X #12 x 1.25" PHILLIPS FLAT  
HEAD SCREW FROM HK-297