

## Mile Marker

---

Installation guide

## Mile Marker

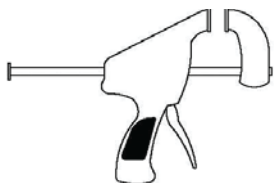
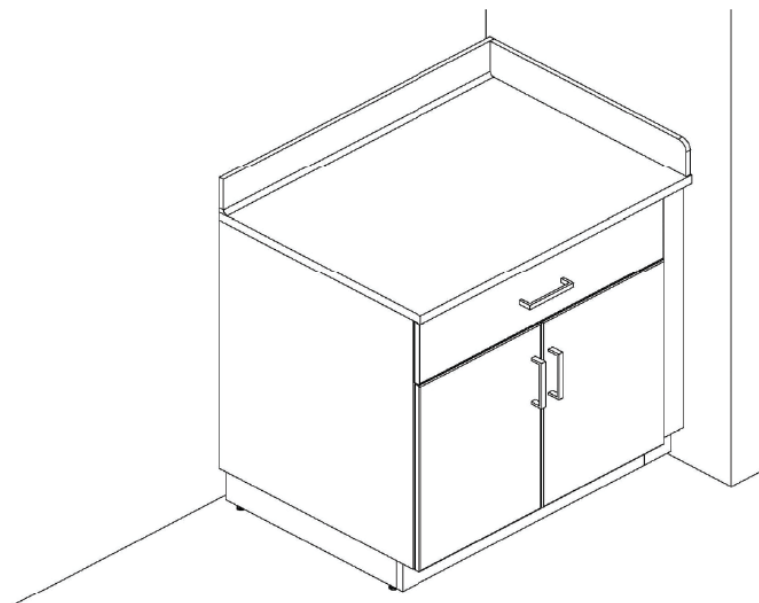
With the rapid pace of today's healthcare environments, a smart and efficient workspace is essential. Mile Marker delivers forward-thinking solutions for today's hardworking healthcare spaces.

With its broad offering and smart design, Mile Marker provides supportive solutions throughout facilities. Whether it's for caregiver work stations, patient rooms, exam spaces, family respite areas or lab environments, Mile Marker adapts and supports specific needs.

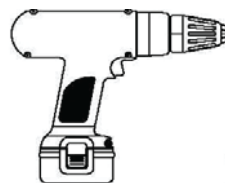
Its high quality construction is dependable from the time of install and throughout the life of the product. Mile Marker's extensive offering of material and options make it easy to specify for both renovations and new construction projects.

**Mile Marker - modular cabinetry and casework with the full facility in mind.**

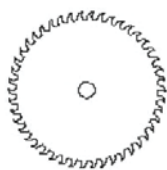
1. Base cabinet, filler panels, & work surfaces
  2. Base cabinet installation
  3. Filler panel installation
  4. Work surface installation
  5. Side splash installation
6. Upper cabinets & filler panels
  7. Upper cabinet installation
  8. Attaching filler & mounting cabinet
9. Storage cabinet & filler panels
  10. Storage cabinet installation
  11. Attaching filler & mounting cabinet
12. Raised wall panel
  - 13-14. Raised wall panel installation
15. Equipment rails
  - 16-18. Equipment rail installation



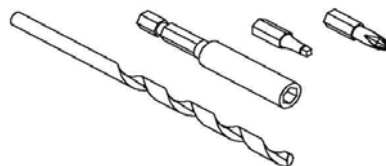
Clamp for optional filler strips



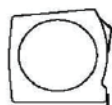
Screw driver



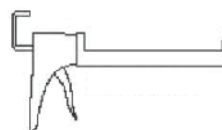
Saw for oversized filler strips & tops



1/4"bit for screw driver



Tape measure

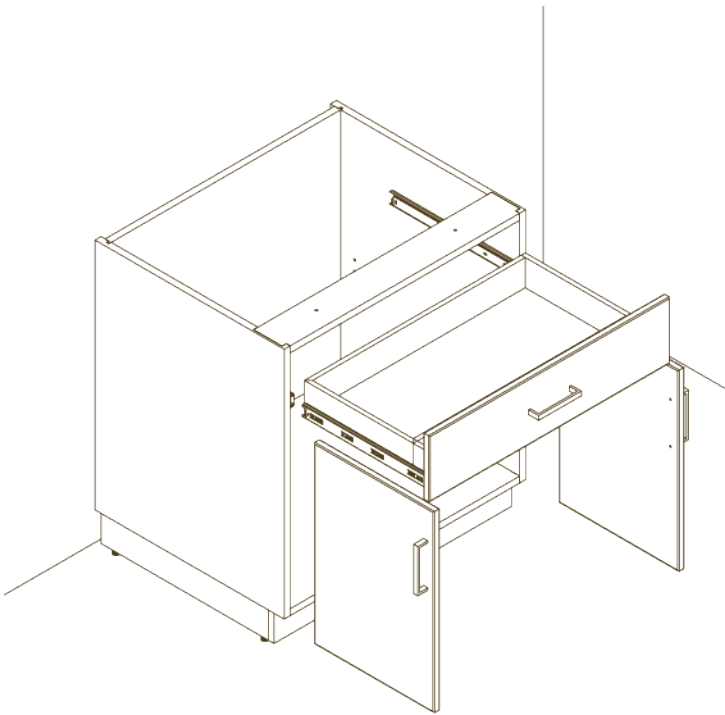


Glue for side splashes

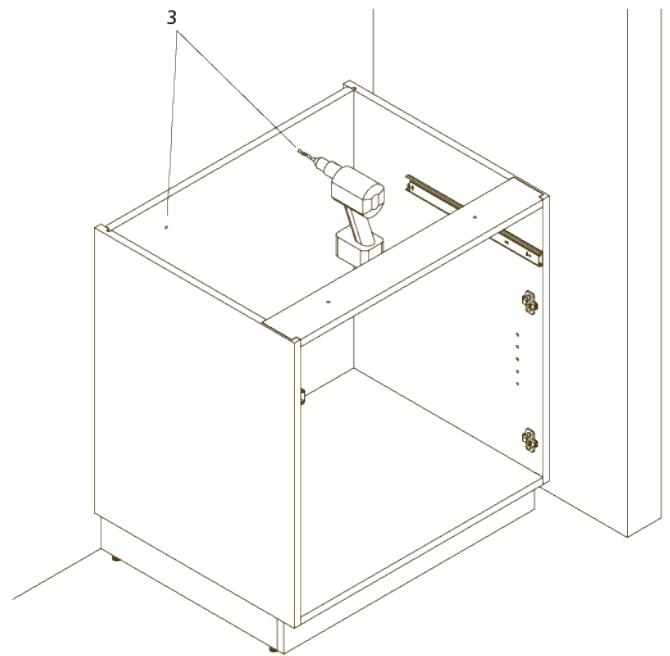


Level

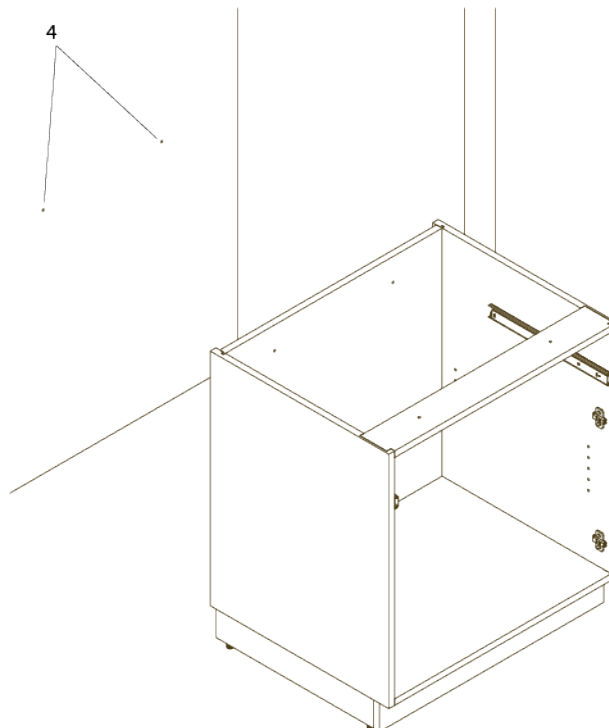
**Important notice:** Installers are responsible for selecting and supplying appropriate fasteners and must verify the adequacy of the mounting hardware. Improper installation may cause damage or serious injury. Carolina cannot be held liable for damage or injury caused by incorrect mounting, assembly or use. These instructions are only a suggested installation method and the installers are responsible for following all local codes and regulations.



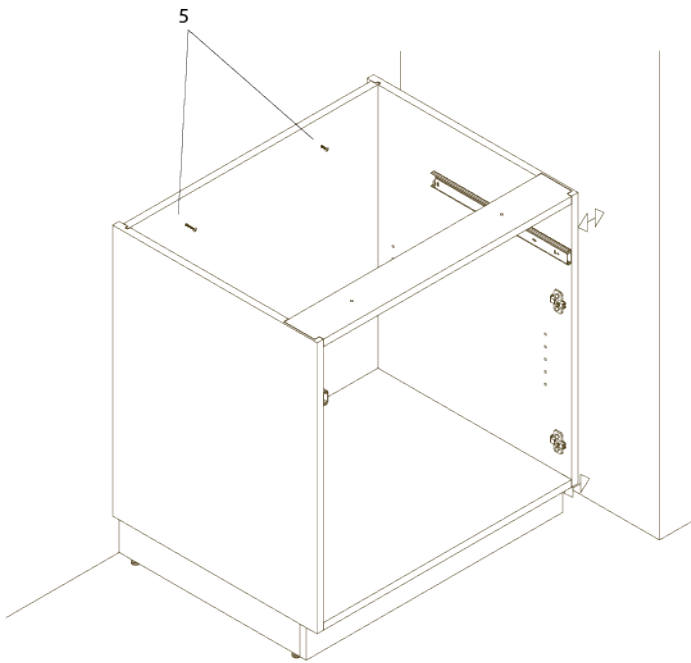
1. Remove doors and drawers from cabinet



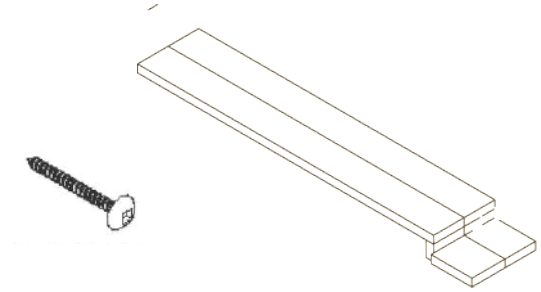
2. Place cabinet in desired location level floor levels.  
3. Drill pilot holes in back panel with 1/4" drill bit.



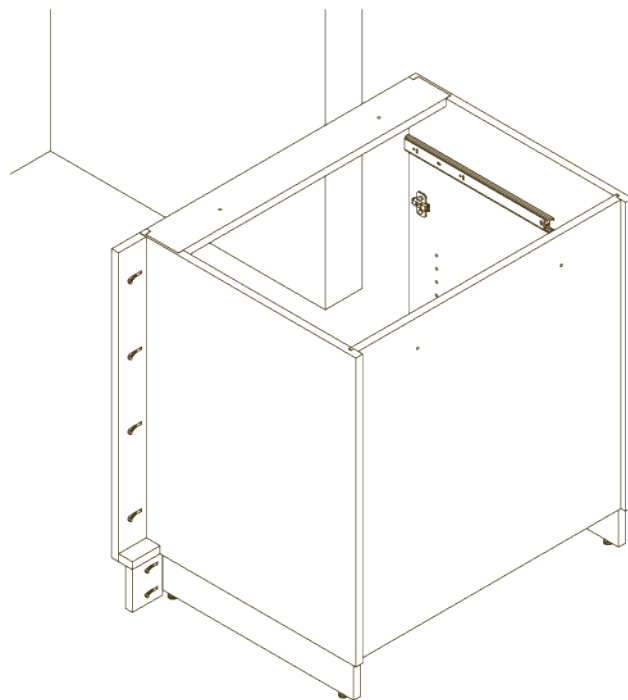
4. Install wall anchor (installers preference) using marks from pilot holes.



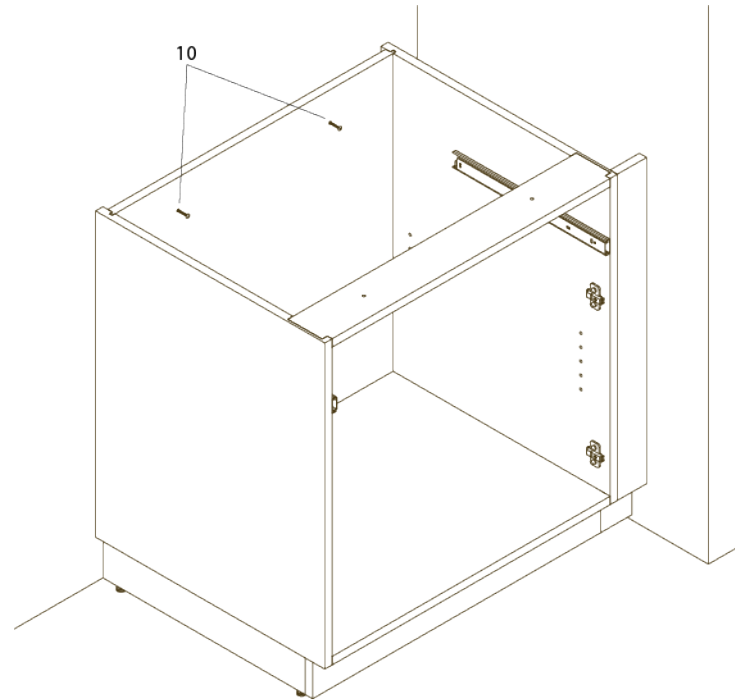
5. Place cabinet in position and anchor to wall.
6. Measure the gap between the cabinet and wall for filler panel.



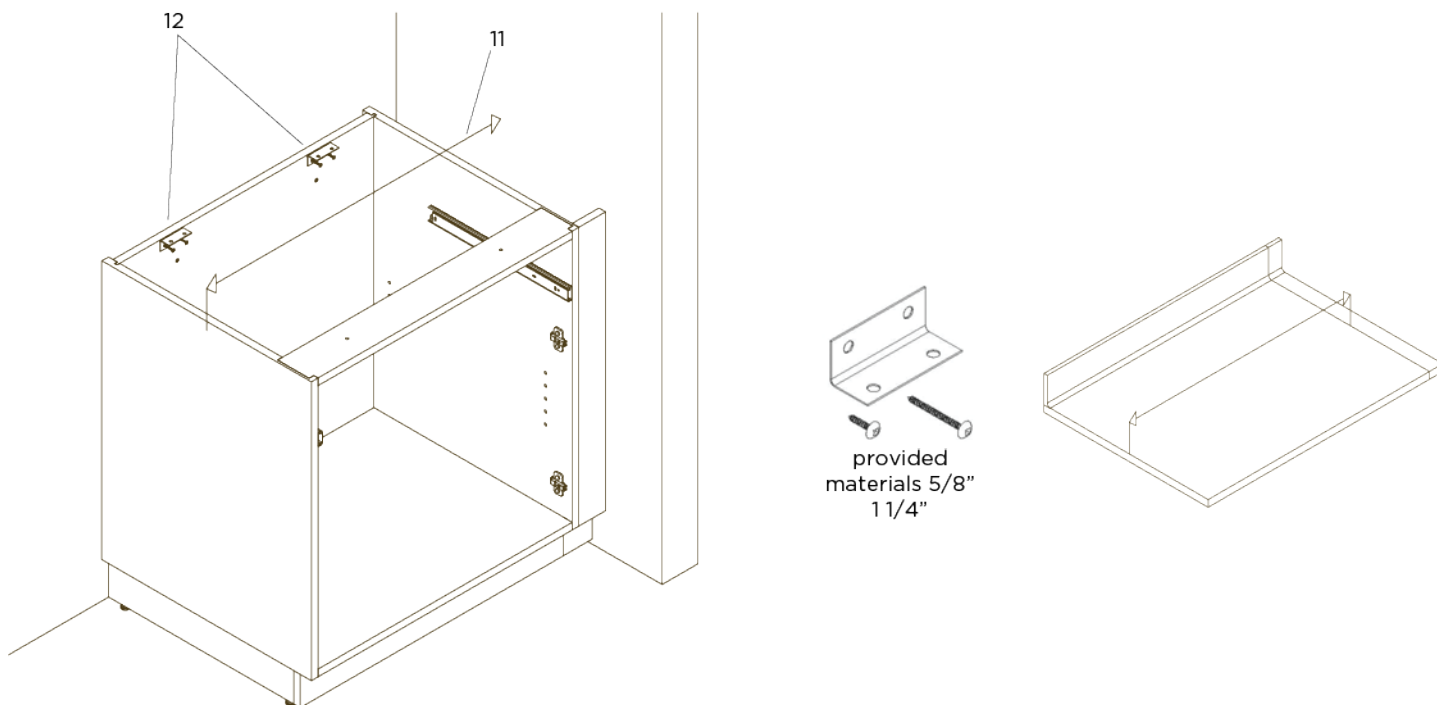
7. After obtaining measurements, detach the cabinet from the wall.
8. Cut filler panels to the correct size from step 6.



9. Attach filler panels with 11/2" screws. **OPTIONAL:** Use hand clamp to secure filler while attaching.

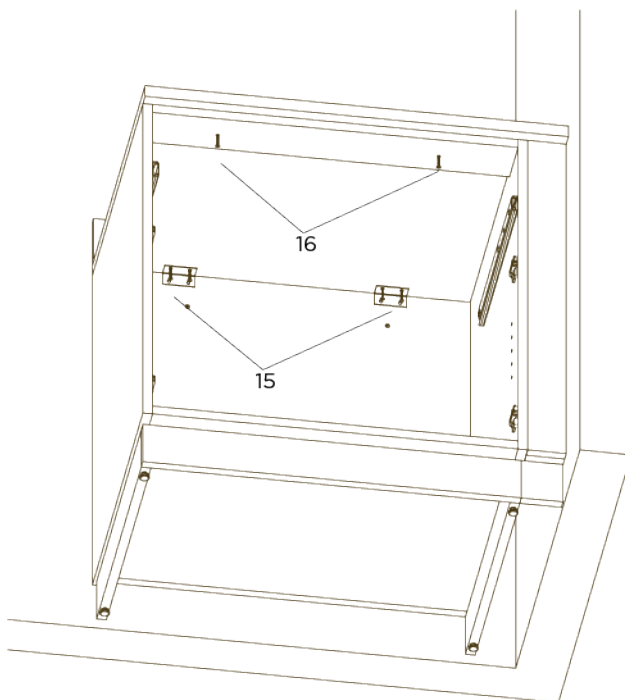


10. Place cabinet in position and anchor to wall.

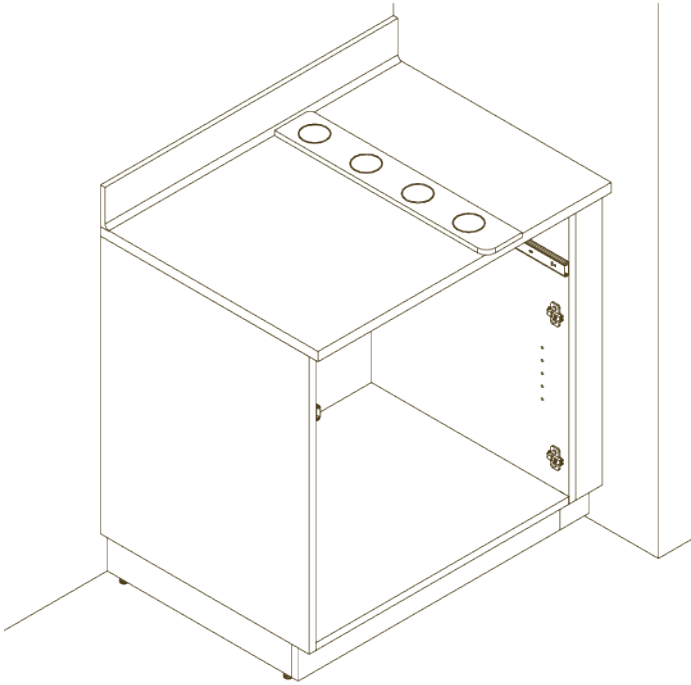


11. Measure for work surface.
12. Attach (2) L-Brackets on the back panel with 5/8" screws.

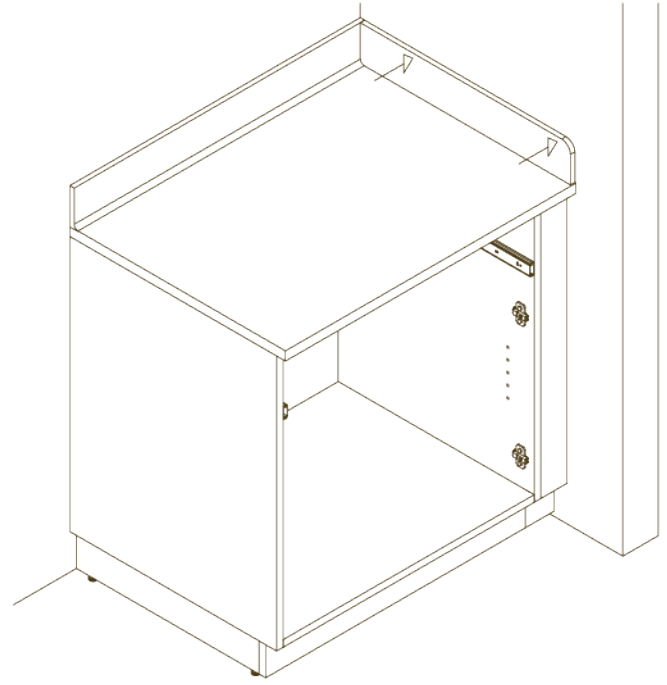
13. Cut work surface to the correct size from (step 11).



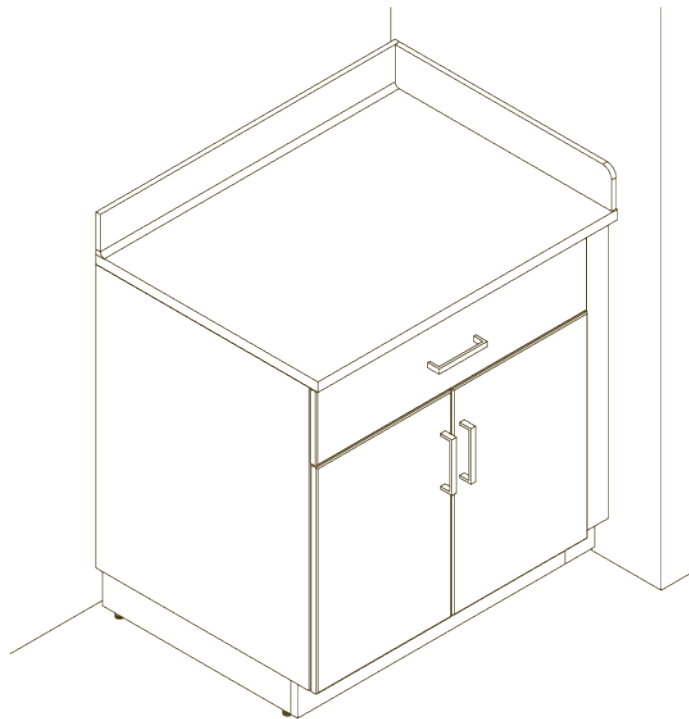
14. Place the work surface on the cabinet.
15. Use 5/8" screws to attach the work surface to the L-Brackets.
16. Use 1 1/4" screws to attach the work surface to the front stretcher.



17. Add silicon or caulk to the side splash.  
**NOTE:** Using circular beads will create a vacuum when applying side splash to wall to create a tighter seal.

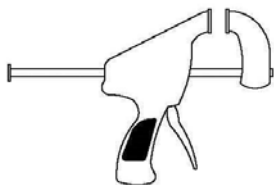
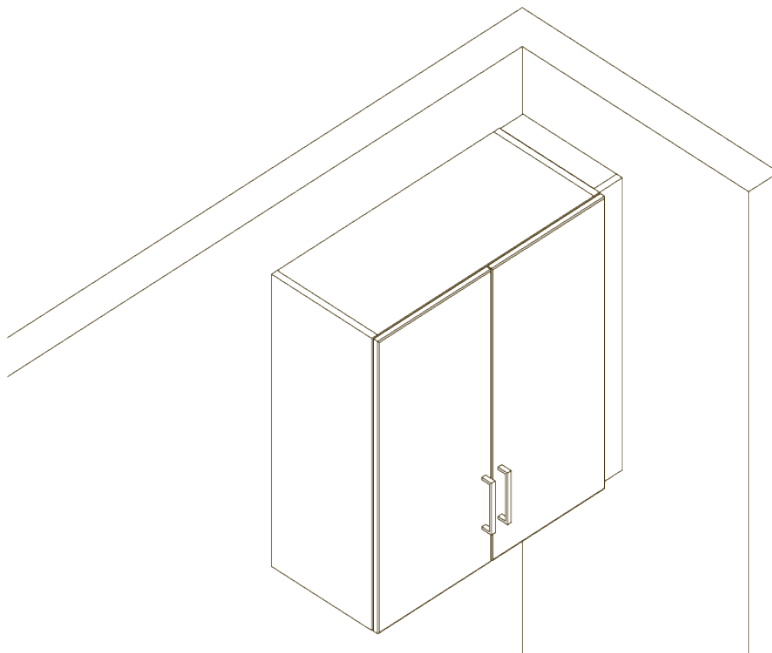


18. Attach the side splash by pressing it firmly to the wall.

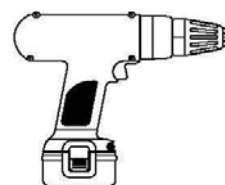


19. Re-attach doors and drawers to complete install.

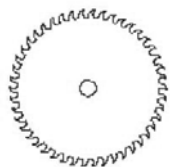




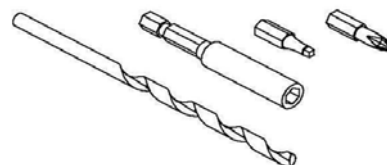
Clamp for optional filler strips



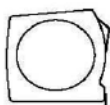
Screw driver



Saw for oversized filler strips



1/4" Bit for screw driver

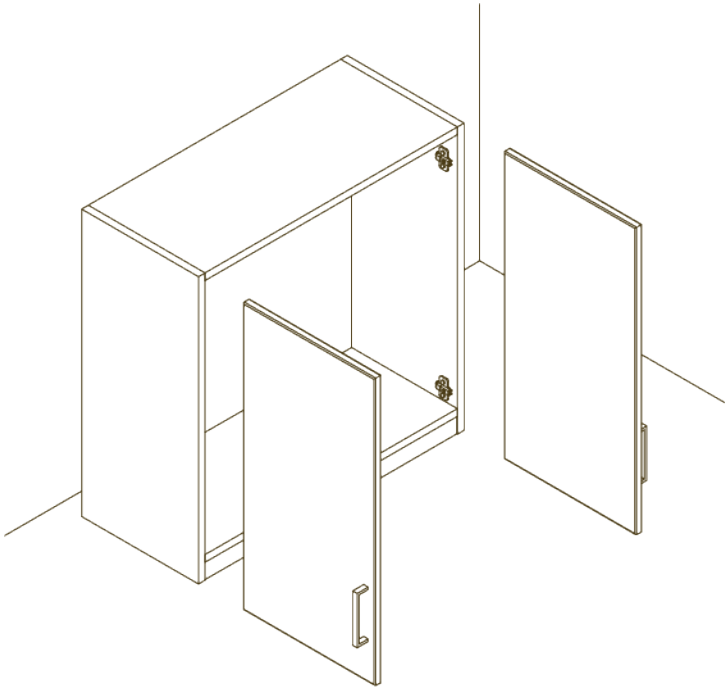


Tape measurer

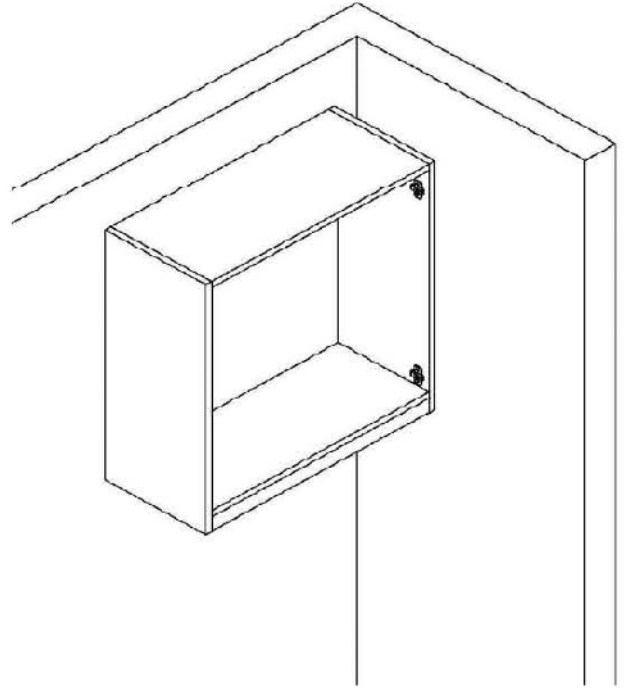


Level

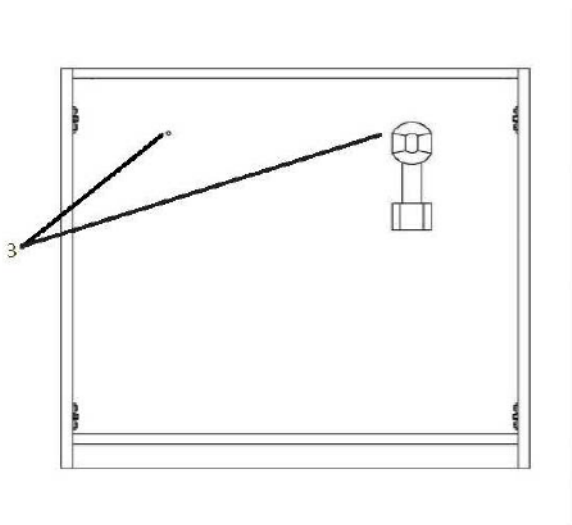
**Important notice:** Installers are responsible for selecting and supplying appropriate fasteners and must verify the adequacy of the mounting hardware. Improper installation may cause damage or serious injury. Carolina cannot be held liable for damage or injury caused by incorrect mounting, assembly or use. These instructions are only a suggested installation method and the installers are responsible for following all local codes and regulations.



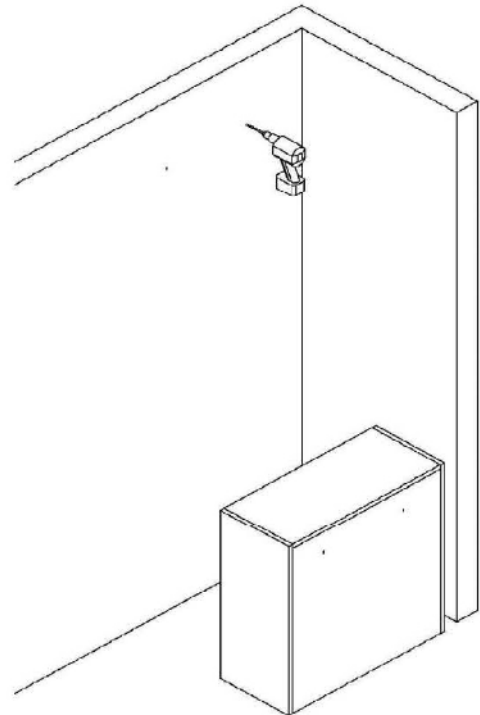
1. Remove doors from the cabinet.



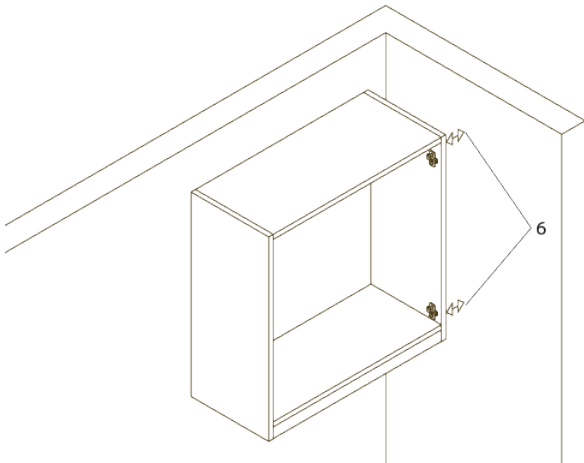
2. Hold the cabinet at the desired height.



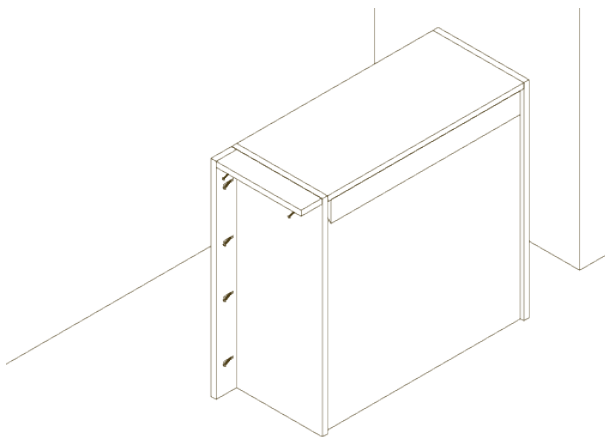
3. Drill pilot holes in the back panel with a 1/4" drill bit.



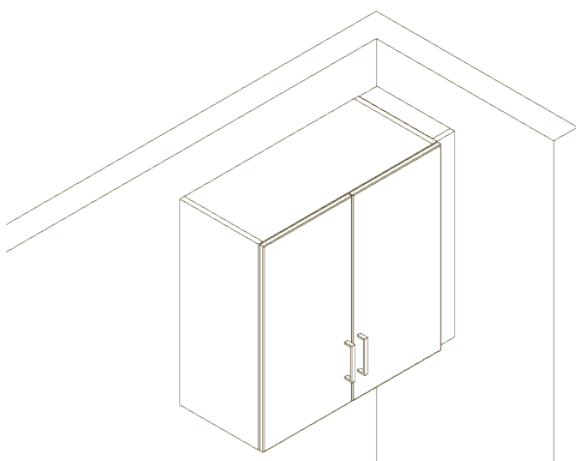
4. Install wall anchor (installer preference) using the marks.



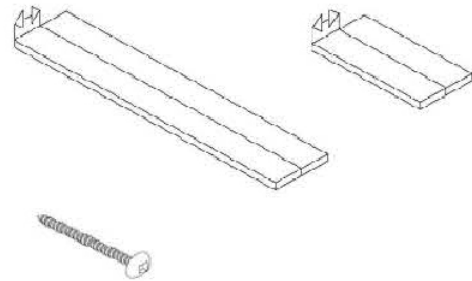
5. Place cabinet in position on the wall and anchor.
6. Measure the gap between the cabinet and wall for filler panel.



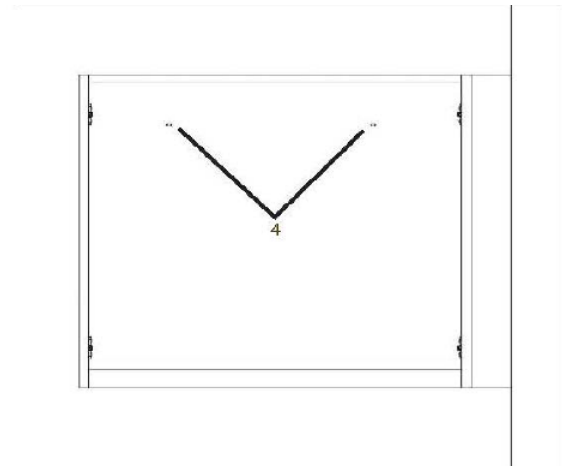
8. Attach the filler panels with 1 1/2" screws.  
**OPTIONAL:** Use hand clamps to secure the filler while attaching.



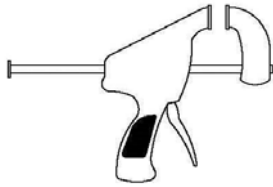
12. Reattach the doors to complete installation.



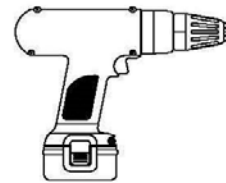
7. After obtaining the measurements, detach the cabinet from the wall.



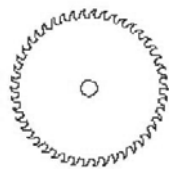
9. Place the cabinet in position on the wall.
10. Re-anchor the cabinet through the back panel.



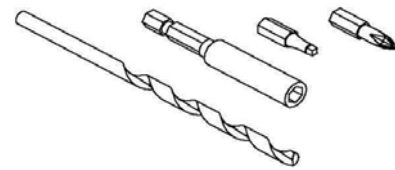
Clamp for optional filler strips



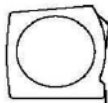
Screw driver



Saw for oversized filler strips



1/4" Bit for screw driver

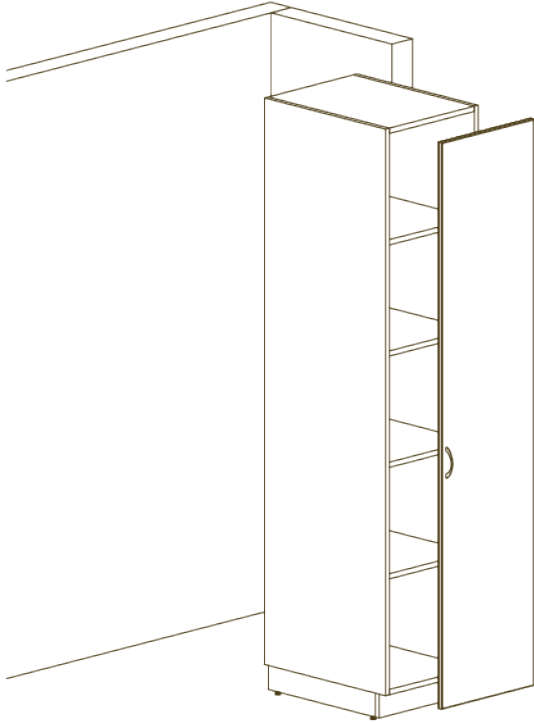


Tape measurer

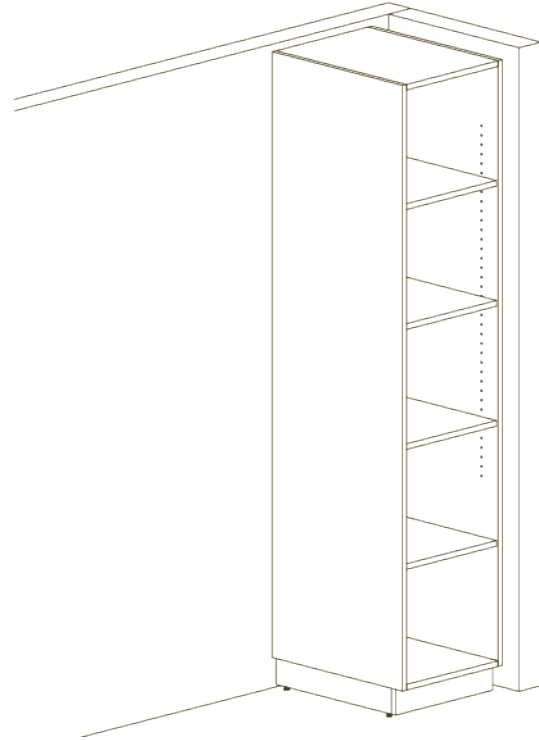


Level

**Important notice:** Installers are responsible for selecting and supplying appropriate fasteners and must verify the adequacy of the mounting hardware. Improper installation may cause damage or serious injury. Carolina cannot be held liable for damage or injury caused by incorrect mounting, assembly or use. These instructions are only a suggested installation method and the installers are responsible for following all local codes and regulations.



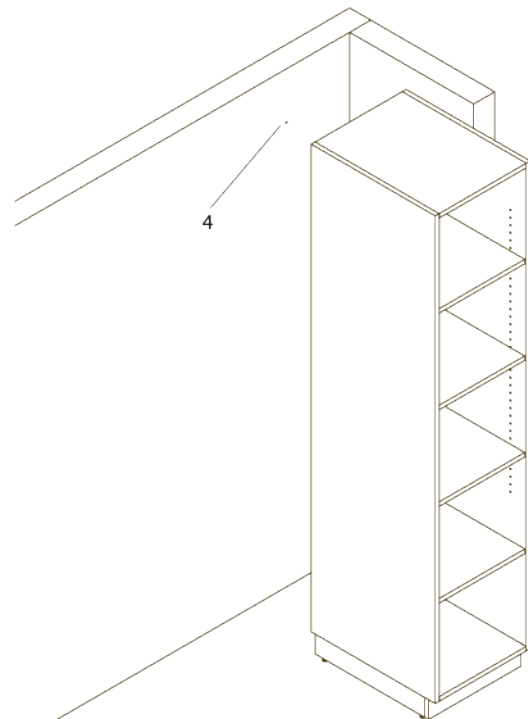
1. Remove the doors from the cabinet.



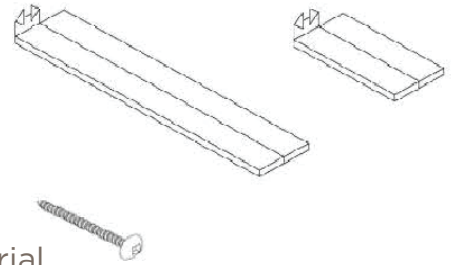
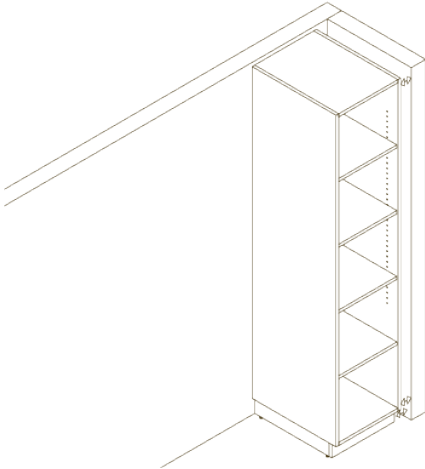
2. Place the cabinet in the desired location and level it with the floor levelers.



3. Drill pilot holes in the back panel with a 1/4" drill bit.



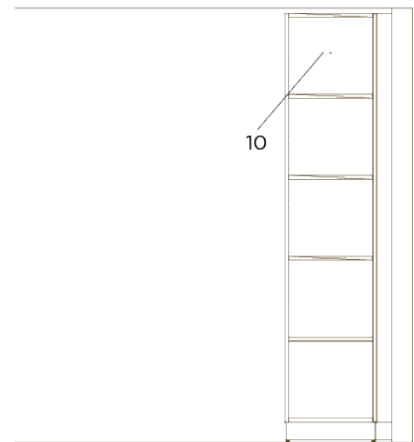
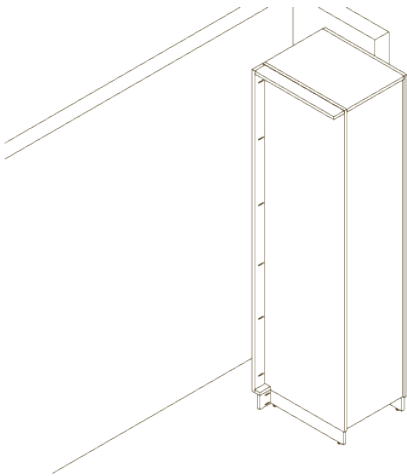
4. Install wall anchor (installers preference) using marks from pilot holes.



Provided material  
1 1/2" screw

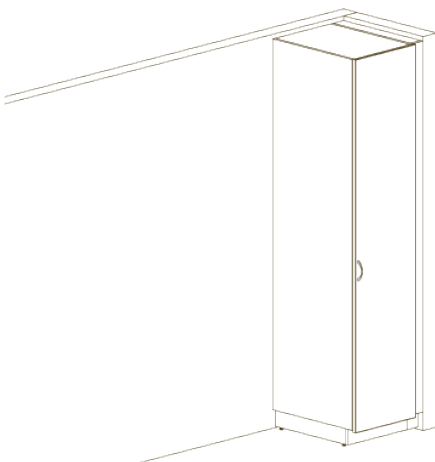
5. Place the cabinet in position on the wall and anchor.
6. Measure the gap between the cabinet and wall for the filler panel.

7. After obtaining the measurements, detach the cabinet from the wall.
8. Cut the filler panels to the correct size from (step 6.)

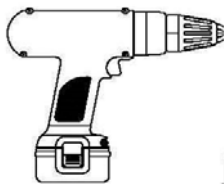
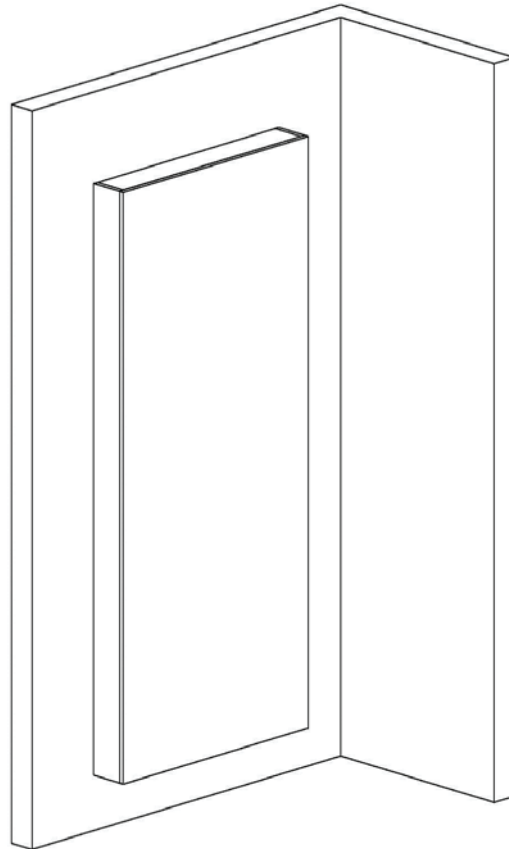


9. Attach the filler panels with 1 1/2" screws. **OPTIONAL:** Use hand clamp to secure the filler while attaching.

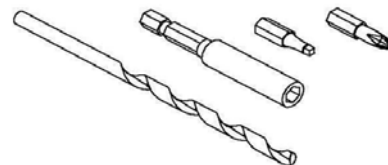
10. Place cabinet in position on the wall and anchor to the wall.



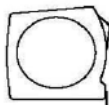
12. Reattach the doors to complete the install.



Screw driver



1/4" Bit for screw driver

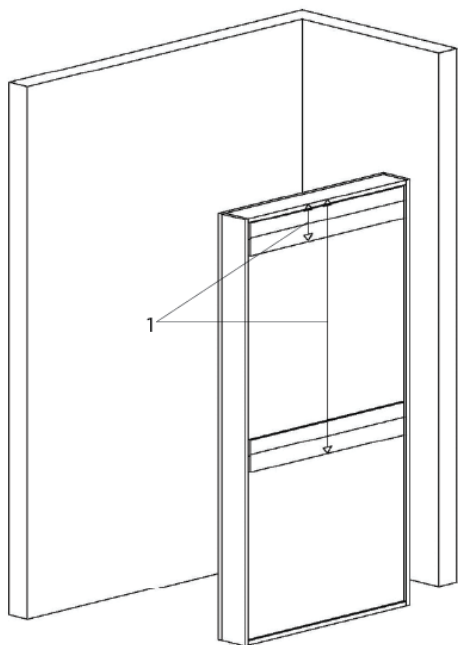


Tape measurer

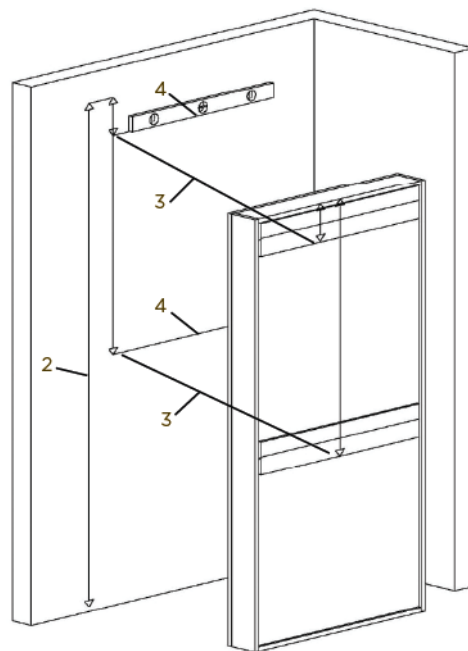


Level

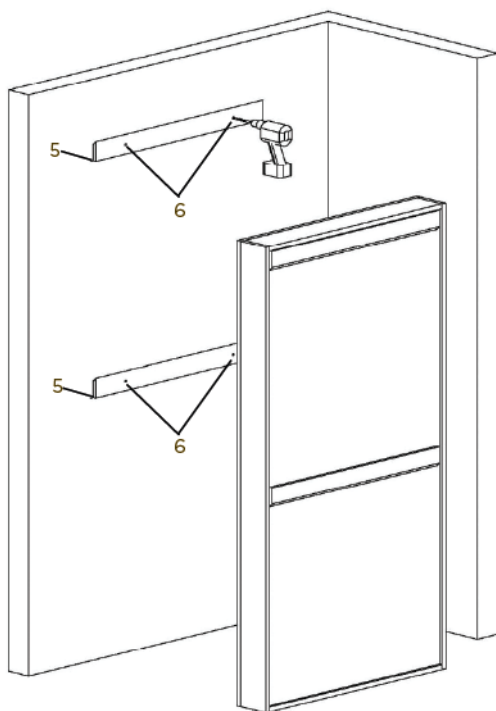
**Important notice:** Installers are responsible for selecting and supplying appropriate fasteners and must verify the adequacy of the mounting hardware. Improper installation may cause damage or serious injury. Carolina cannot be held liable for damage or injury caused by incorrect mounting, assembly or use. These instructions are only a suggested installation method and the installers are responsible for following all local codes and regulations.



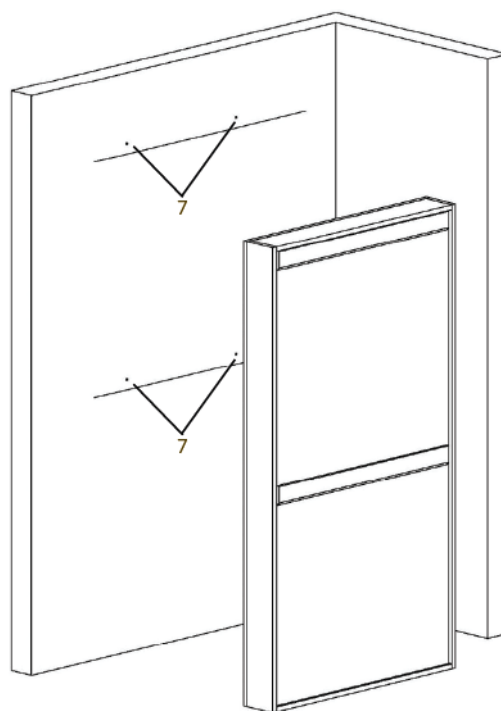
1. Measure the knife board from the top of the cabinet to the bottom of lower knife boards.



2. Measure the height that the cabinet will hang.
3. Measure down distance from (step 1).
4. Use a level to mark the wall with a reference line from that distance.

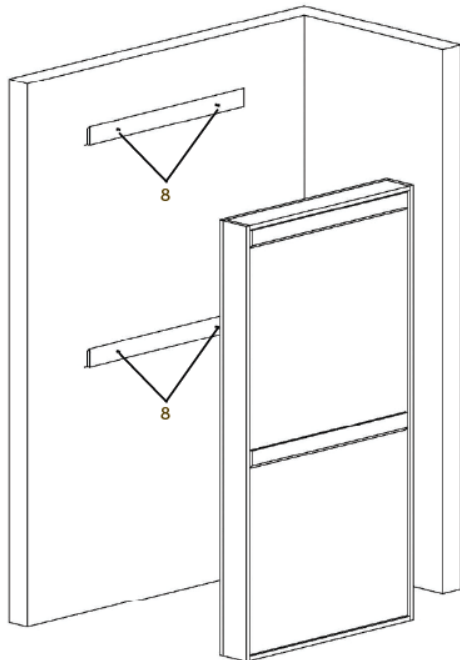


5. Place knife board bottom with mark from (step 4).
6. Drill pilot holes in knife board with 1/4" drill bit.

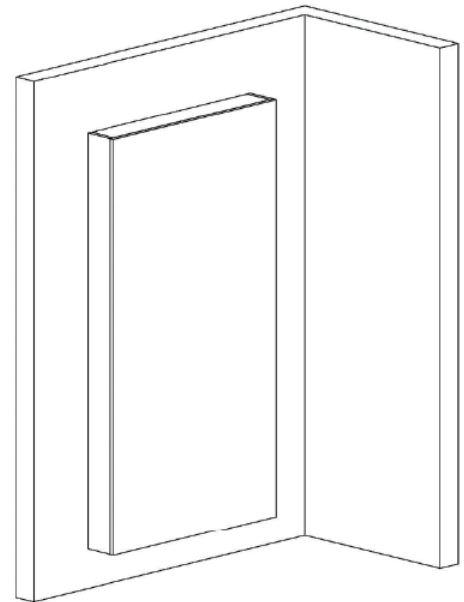


7. Install wall anchor (installer preference) using the marks from the pilot holes.

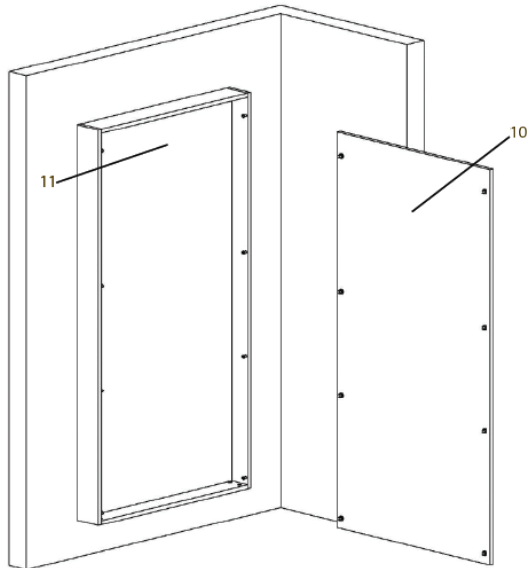




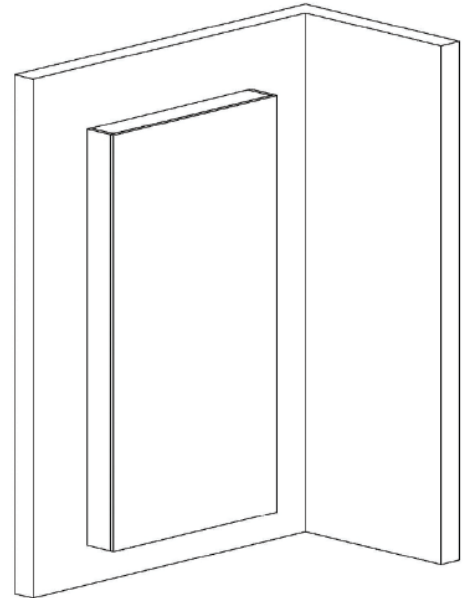
8. Place knife boards in position and anchor to wall.



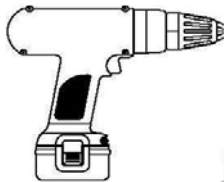
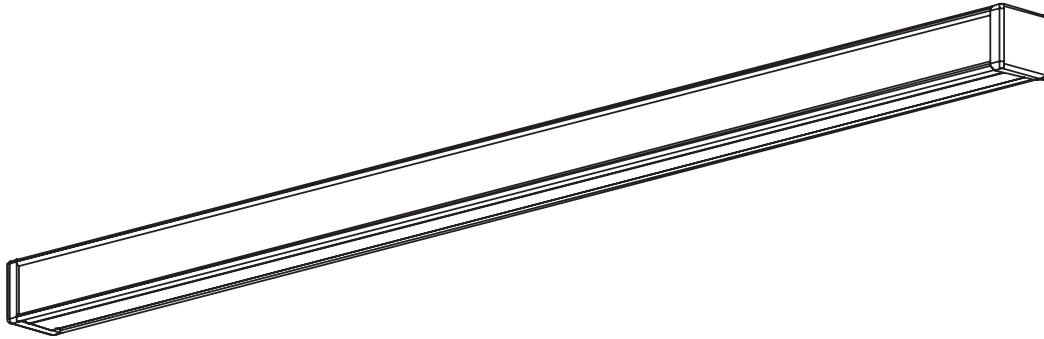
9. Place panel in position on wall.



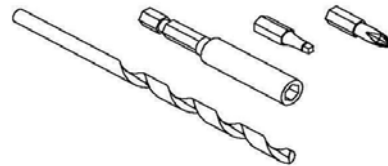
10. Remove front panel from cabinet.  
11. Anchor 1 1/2" screw through back panel into the bottom knife board.



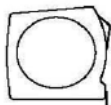
12. Reattach front panel to the cabinet.



Screw driver



1/4" Bit for screw driver

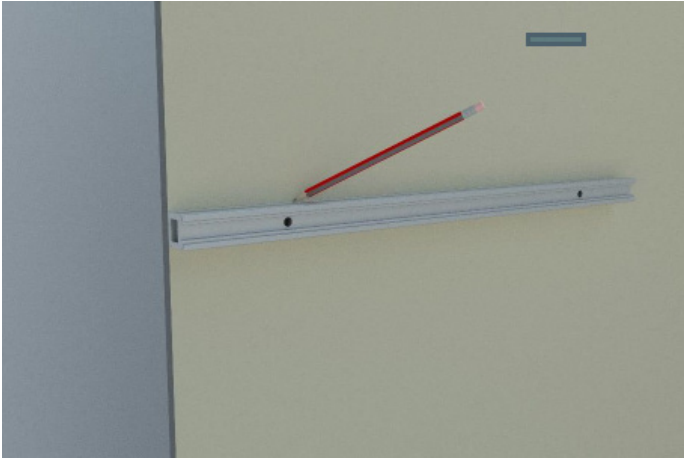


Tape measurer

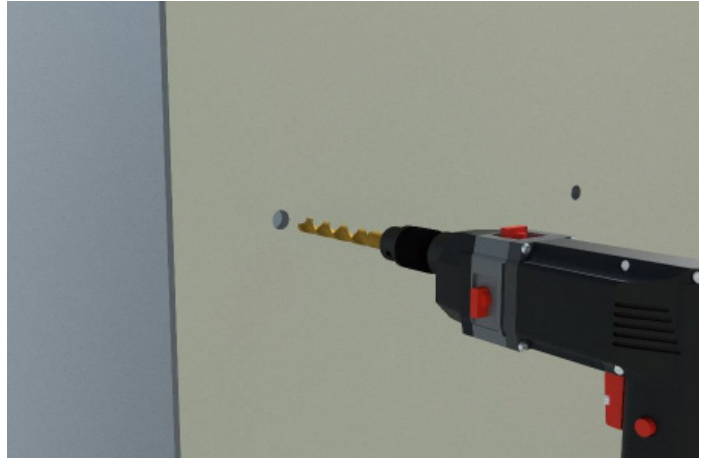


Level

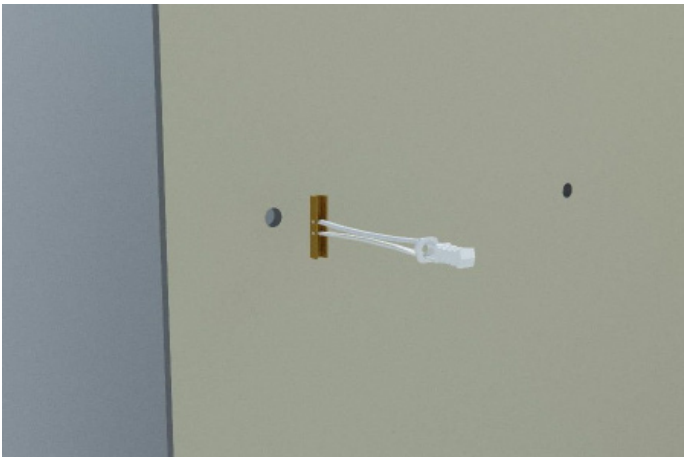
**Important notice:** Installers are responsible for selecting and supplying appropriate fasteners and must verify the adequacy of the mounting hardware. Improper installation may cause damage or serious injury. Carolina cannot be held liable for damage or injury caused by incorrect mounting, assembly or use. These instructions are only a suggested installation method and the installers are responsible for following all local codes and regulations.



1. Mark the desired height and level the equipment rail.



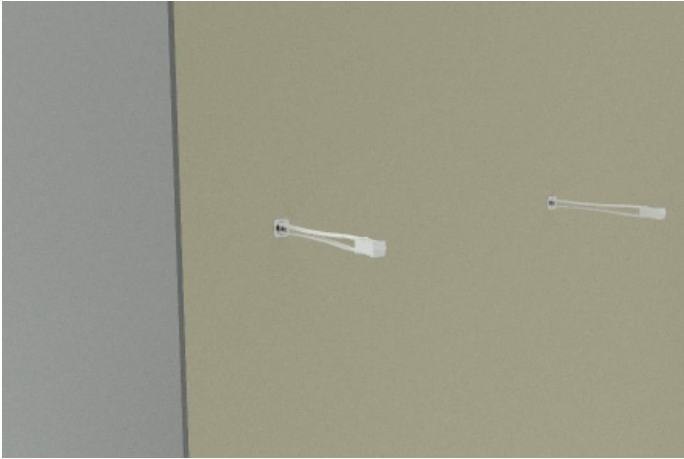
2. Drill the holes using a ½" drill bit.



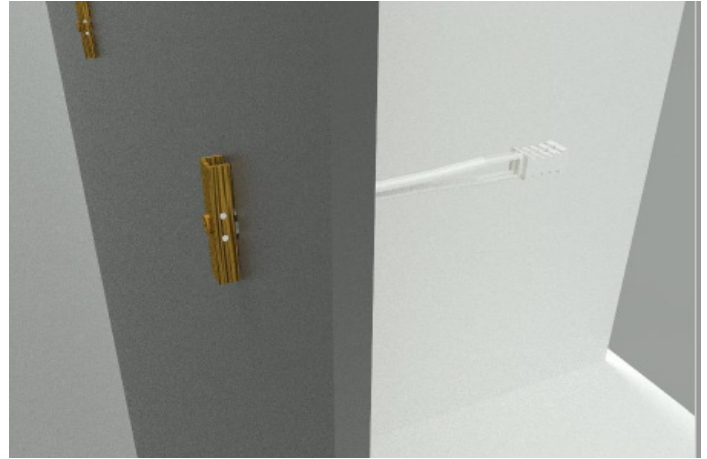
3. Prepare ¼" toggle type wall anchors.



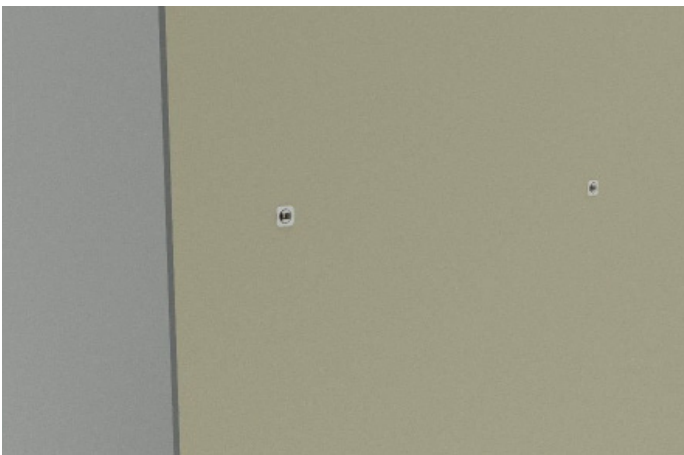
4. Insert the ¼" toggle type wall anchors in the locations as marked.



5. Align and tighten to the wall. See step 6 for reference.



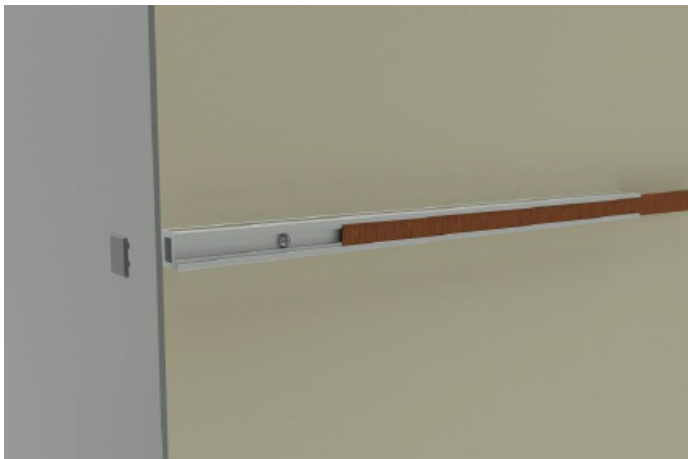
6. Image for reference.



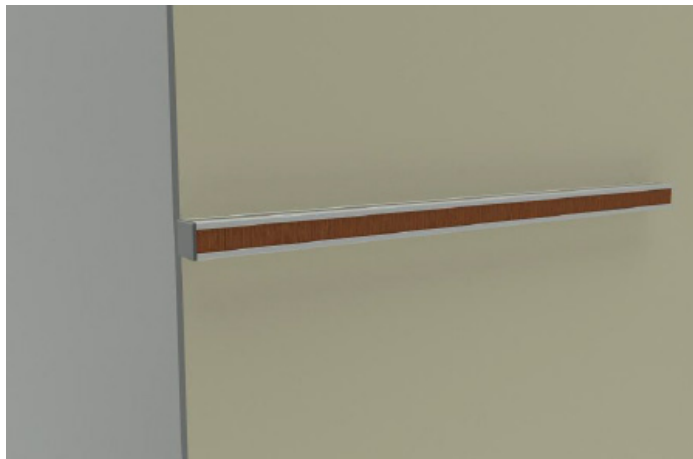
7. Bend the anchor until the plastic cracks, flush to the wall.



8. Realign the rail. Insert and tighten ¼" screws.



9. Insert the provided inlay strip.



10. Secure the end caps on both sides.

Finished product:

