

76" sleepover with left-side facing and right-side facing arms CL-76AA

Single textiles

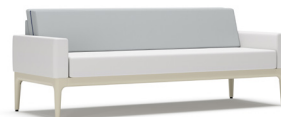
Overall Dimensions	84.5"w x 32.5"d x 32"h	COM 54"	7 yds.
Seat Dimensions	76"w x 20"d x 18.5"h	Cubic Feet	57
Top of Arm to Floor	24"	Shipping Weight	192 lbs.
Arm Width	4.25"	Weight Rating	300 lbs. per seat
Sleep Surface Dimensions	76"w x 29"d x 3.5"h		



76" sleepover with left-side facing and right-side facing arms CL-76AA-MT

Multiple textiles

Overall Dimensions	84.5"w x 32.5"d x 32"h	COM 54" - Seat	2.25 yds.
Seat Dimensions	76"w x 20"d x 18.5"h	COM 54" - Inside Back	2.5 yds.
Top of Arm to Floor	24"	COM 54" - Outside Back	2.5 yds.
Arm Width	4.25"	COM 54" - Arms	2 yds.
Sleep Surface Dimensions	76"w x 29"d x 3.5"h	Cubic Feet	57
		Shipping Weight	192 lbs.
		Weight Rating	300 lbs. per seat



80" sleepover with left-side facing and right-side facing arms CL-80AA

Single textiles

Overall Dimensions	88.5"w x 32.5"d x 32"h	COM 54"	7.5 yds.
Seat Dimensions	80"w x 20"d x 18.5"h	Cubic Feet	60
Top of Arm to Floor	24"	Shipping Weight	205 lbs.
Arm Width	4.25"	Weight Rating	300 lbs. per seat
Sleep Surface Dimensions	80"w x 29"d x 3.5"h		



80" sleepover with left-side facing and right-side facing arms CL-80AA-MT

Multiple textiles

Overall Dimensions	88.5"w x 32.5"d x 32"h	COM 54" - Seat	2.5 yds.
Seat Dimensions	80"w x 20"d x 18.5"h	COM 54" - Inside Back	2.75 yds.
Top of Arm to Floor	24"	COM 54" - Outside Back	2.75 yds.
Arm Width	4.25"	COM 54" - Arms	2 yds.
Sleep Surface Dimensions	80"w x 29"d x 3.5"h	Cubic Feet	60
		Shipping Weight	205 lbs.
		Weight Rating	300 lbs. per seat



Standard Features	Options Available
<ul style="list-style-type: none"> Available in 76" and 80" sleep surface lengths Fully upholstered arms with no arm caps Spring seat construction 360° clean-thru design Cast aluminum legs and extruded aluminum frame 10" High base design provides easy access for maintenance Non-marring adjustable glides Casters (optional) feature red safety lock to improve visibility for users Easily converts from seating to sleeping with a mechanism-free, low-maintenance design Sleep surface is upholstered in exclusive SleepShield polyurethane coating with enhanced chemical resistance, applied to four-way stretch polyester weft-knit fabric. Safety feature indicators, including red details on the locking casters and the sleep cushion straps 	Arm caps <ul style="list-style-type: none"> Resin (Black, Shadow, and Folkstone Grey) 3DL (Standard finish offering) Solid surface (Cameo White, Modern White, Medea, and Polaris)
	Base <ul style="list-style-type: none"> Glides or dual-locking casters (Black or Grey) Powder-coated base (Bone White, Chalk, Ion, Luster Grey, Oiled Bronze, Onyx, and Stone) Wall-saver bumpers are available on all four legs or rear legs only
	Power <ul style="list-style-type: none"> Power is under-mounted (specify left and/or right-facing) The unit can be positioned anywhere along the base (1) Power outlet and (2) USB-A outlets Available in Silver, Deep Space, and Black The cord is 10' long

76" sleepover with left-side facing arm and right-side facing table CL-76AT

Single textiles

Overall Dimensions	92.25"w x 32.5"d x 32"h	COM 54"	6.5 yds.
Seat Dimensions	76"w x 20"d x 18.5"h	Cubic Feet	62
Top of Arm to Floor	24"	Shipping Weight	195 lbs.
Arm Width	4.25"	Weight Rating	300 lbs. per seat
Table Dimensions	11.625"w x 32.125"d x 13.5"h		
Sleep Surface Dimensions	76"w x 29"d x 3.5"h		



76" sleepover with left-side facing arm and right-side facing table CL-76AT-MT

Multiple textiles

Overall Dimensions	92.25"w x 32.5"d x 32"h	COM 54" - Seat	2.25 yds.
Seat Dimensions	76"w x 20"d x 18.5"h	COM 54" - Inside Back	2.5 yds.
Top of Arm to Floor	24"	COM 54" - Outside Back	2.5 yds.
Arm Width	4.25"	COM 54" - Arms	1.25 yds.
Table Dimensions	11.625"w x 32.125"d x 13.5"h	Cubic Feet	62
Sleep Surface Dimensions	76"w x 29"d x 3.5"h	Shipping Weight	195 lbs.
		Weight Rating	300 lbs. per seat



80" sleepover with left-side facing arm and right-side facing table CL-80AT

Single textiles

Overall Dimensions	96.25"w x 32.5"d x 32"h	COM 54"	7 yds.
Seat Dimensions	80"w x 20"d x 18.5"h	Cubic Feet	65
Top of Arm to Floor	24"	Shipping Weight	208 lbs.
Arm Width	4.25"	Weight Rating	300 lbs. per seat
Table Dimensions	11.625"w x 32.125"d x 13.5"h		
Sleep Surface Dimensions	80"w x 29"d x 3.5"h		



80" sleepover with left-side facing arm and right-side facing table CL-80AT-MT

Multiple textiles

Overall Dimensions	96.25"w x 32.5"d x 32"h	COM 54" - Seat	2.5 yds.
Seat Dimensions	80"w x 20"d x 18.5"h	COM 54" - Inside Back	2.75 yds.
Top of Arm to Floor	24"	COM 54" - Outside Back	2.75 yds.
Arm Width	4.25"	COM 54" - Arms	1.25 yds.
Table Dimensions	11.625"w x 32.125"d x 13.5"h	Cubic Feet	65
Sleep Surface Dimensions	80"w x 29"d x 3.5"h	Shipping Weight	208 lbs.
		Weight Rating	300 lbs. per seat



Standard Features	Options Available
<ul style="list-style-type: none"> Available in 76" and 80" sleep surface lengths Fully upholstered arm with no arm cap Table surface is standard in 3DL Spring seat construction 360° clean-thru design Cast aluminum legs and extruded aluminum frame 10" High base design provides easy access for maintenance Non-marring adjustable glides Casters (optional) feature red safety lock to improve visibility for users Easily converts from seating to sleeping with a mechanism-free, low-maintenance design Sleep surface is upholstered in exclusive SleepShield polyurethane coating with enhanced chemical resistance, applied to four-way stretch polyester weft-knit fabric. Safety feature indicators, including red details on the locking casters and the sleep cushion straps 	Arm caps <ul style="list-style-type: none"> Resin (Black, Shadow, and Folkstone Grey) 3DL (Standard finish offering) Solid surface (Cameo White, Modern White, Medea, and Polaris)
	Table surface <ul style="list-style-type: none"> Laminate (Standard 3DL offering) Solid surface (Cameo White, Modern White, Medea, and Polaris) Spill groove is available on 3DL and solid surface
	Base <ul style="list-style-type: none"> Glides or dual-locking casters (Black or Grey) Powder-coated base (Bone White, Chalk, Ion, Luster Grey, Oiled Bronze, Onyx, and Stone) Wall-saver bumpers are available on all four legs or rear legs only
	Power <ul style="list-style-type: none"> Power is under-mounted (specify left and/or right-facing) The unit can be positioned anywhere along the base (1) Power outlet and (2) USB-A outlets Available in Silver, Deep Space, and Black The cord is 10' long

76" sleepover with left-side facing table and right-side facing arm CL-76TA

Single textiles

Overall Dimensions	92.25"w x 32.5"d x 32"h	COM 54"	6.5 yds.
Seat Dimensions	76"w x 20"d x 18.5"h	Cubic Feet	62
Top of Arm to Floor	24"	Shipping Weight	195 lbs.
Arm Width	4.25"	Weight Rating	300 lbs. per seat
Table Dimensions	11.625"w x 32.125"d x 13.5"h		
Sleep Surface Dimensions	76"w x 29"d x 3.5"h		



76" sleepover with left-side facing table and right-side facing arm CL-76TA-MT

Multiple textiles

Overall Dimensions	92.25"w x 32.5"d x 32"h	COM 54" - Seat	2.25 yds.
Seat Dimensions	76"w x 20"d x 18.5"h	COM 54" - Inside Back	2.5 yds.
Top of Arm to Floor	24"	COM 54" - Outside Back	2.5 yds.
Arm Width	4.25"	COM 54" - Arms	1.25 yds.
Table Dimensions	11.625"w x 32.125"d x 13.5"h	Cubic Feet	62
Sleep Surface Dimensions	76"w x 29"d x 3.5"h	Shipping Weight	195 lbs.
		Weight Rating	300 lbs. per seat



80" sleepover with left-side facing table and right-side facing arm CL-80TA

Single textiles

Overall Dimensions	96.25"w x 32.5"d x 32"h	COM 54"	7 yds.
Seat Dimensions	80"w x 20"d x 18.5"h	Cubic Feet	65
Top of Arm to Floor	24"	Shipping Weight	208 lbs.
Arm Width	4.25"	Weight Rating	300 lbs. per seat
Table Dimensions	11.625"w x 32.125"d x 13.5"h		
Sleep Surface Dimensions	80"w x 29"d x 3.5"h		



80" sleepover with left-side facing table and right-side facing arm CL-80TA-MT

Multiple textiles

Overall Dimensions	96.25"w x 32.5"d x 32"h	COM 54" - Seat	2.5 yds.
Seat Dimensions	80"w x 20"d x 18.5"h	COM 54" - Inside Back	2.75 yds.
Top of Arm to Floor	24"	COM 54" - Outside Back	2.75 yds.
Arm Width	4.25"	COM 54" - Arms	1.25 yds.
Table Dimensions	11.625"w x 32.125"d x 13.5"h	Cubic Feet	65
Sleep Surface Dimensions	80"w x 29"d x 3.5"h	Shipping Weight	208 lbs.
		Weight Rating	300 lbs. per seat



Standard Features	Options Available
<ul style="list-style-type: none"> Available in 76" and 80" sleep surface lengths Fully upholstered arm with no arm cap Table surface is standard in 3DL Spring seat construction 360° clean-thru design Cast aluminum legs and extruded aluminum frame 10" High base design provides easy access for maintenance Non-marring adjustable glides Casters (optional) feature red safety lock to improve visibility for users Easily converts from seating to sleeping with a mechanism-free, low-maintenance design Sleep surface is upholstered in exclusive SleepShield polyurethane coating with enhanced chemical resistance, applied to four-way stretch polyester weft-knit fabric. Safety feature indicators, including red details on the locking casters and the sleep cushion straps 	Arm caps <ul style="list-style-type: none"> Resin (Black, Shadow, and Folkstone Grey) 3DL (Standard finish offering) Solid surface (Cameo White, Modern White, Medea, and Polaris)
	Table surface <ul style="list-style-type: none"> Laminate (Standard 3DL offering) Solid surface (Cameo White, Modern White, Medea, and Polaris) Spill groove is available on 3DL and solid surface
	Base <ul style="list-style-type: none"> Glides or dual-locking casters (Black or Grey) Powder-coated base (Bone White, Chalk, Ion, Luster Grey, Oiled Bronze, Onyx, and Stone) Wall-saver bumpers are available on all four legs or rear legs only
	Power <ul style="list-style-type: none"> Power is under-mounted (specify left and/or right-facing) The unit can be positioned anywhere along the base (1) Power outlet and (2) USB-A outlets Available in Silver, Deep Space, and Black The cord is 10' long

76" sleepover with left-side facing table and right-side facing table CL-76TT

Single textiles

Overall Dimensions	92.25"w x 32.5"d x 32"h	COM 54"	6.5 yds.
Seat Dimensions	76"w x 20"d x 18.5"h	Cubic Feet	67
Table Dimensions	11.625"w x 32.125"d x 13.5"h	Shipping Weight	195 lbs.
Sleep Surface Dimensions	76"w x 29"d x 3.5"h	Weight Rating	300 lbs. per seat



76" sleepover with left-side facing table and right-side facing table CL-76TT-MT

Multiple textiles

Overall Dimensions	92.25"w x 32.5"d x 32"h	COM 54" - Seat	2.25 yds.
Seat Dimensions	76"w x 20"d x 18.5"h	COM 54" - Inside Back	2.5 yds.
Top of Table to Floor	13.5"	COM 54" - Outside Back	2.5 yds.
Table Dimensions	11.625"w x 32.125"d x 13.5"h	COM 54" - Arms	1.25 yds.
Sleep Surface Dimensions	76"w x 29"d x 3.5"h	Cubic Feet	67
		Shipping Weight	195 lbs.
		Weight Rating	300 lbs. per seat



80" sleepover with left-side facing table and right-side facing table CL-80TT

Single textiles

Overall Dimensions	96.25"w x 32.5"d x 32"h	COM 54"	7 yds.
Seat Dimensions	80"w x 20"d x 18.5"h	Cubic Feet	70
Top of Table to Floor	13.5"	Shipping Weight	208 lbs.
Table Dimensions	11.625"w x 32.125"d x 13.5"h	Weight Rating	300 lbs. per seat
Sleep Surface Dimensions	80"w x 29"d x 3.5"h		



80" sleepover with left-side facing table and right-side facing table CL-80TT-MT

Multiple textiles

Overall Dimensions	96.25"w x 32.5"d x 32"h	COM 54" - Seat	2.5 yds.
Seat Dimensions	80"w x 20"d x 18.5"h	COM 54" - Inside Back	2.75 yds.
Top of Table to Floor	13.5"	COM 54" - Outside Back	2.75 yds.
Table Dimensions	11.625"w x 32.125"d x 13.5"h	COM 54" - Arms	1.25 yds.
Sleep Surface Dimensions	80"w x 29"d x 3.5"h	Cubic Feet	70
		Shipping Weight	208 lbs.
		Weight Rating	300 lbs. per seat



Standard Features	Options Available
<ul style="list-style-type: none"> Available in 76" and 80" sleep surface lengths Table surfaces are standard in 3DL Spring seat construction 360° clean-thru design Cast aluminum legs and extruded aluminum frame 10" High base design provides easy access for maintenance Non-marring adjustable glides Casters (optional) feature red safety lock to improve visibility for users Easily converts from seating to sleeping with a mechanism-free, low-maintenance design Sleep surface is upholstered in exclusive SleepShield polyurethane coating with enhanced chemical resistance, applied to four-way stretch polyester weft-knit fabric. Safety feature indicators, including red details on the locking casters and the sleep cushion straps 	Table surface <ul style="list-style-type: none"> Laminate (Standard 3DL offering) Solid surface (Cameo White, Modern White, Medea, and Polaris) Spill groove is available on 3DL and solid surface
	Base <ul style="list-style-type: none"> Glides or dual-locking casters (Black or Grey) Powder-coated base (Bone White, Chalk, Ion, Luster Grey, Oiled Bronze, Onyx, and Stone) Wall-saver bumpers are available on all four legs or rear legs only
	Power <ul style="list-style-type: none"> Power is under-mounted (specify left and/or right-facing) The unit can be positioned anywhere along the base (1) Power outlet and (2) USB-A outlets Available in Silver, Deep Space, and Black The cord is 10' long

76" sleepover with left-side facing arm and right-side facing cubby CL-76AC

Single textiles

Overall Dimensions	92.25"w x 32.5"d x 32"h	COM 54"	6.5 yds.
Seat Dimensions	76"w x 20"d x 18.5"h	Cubic Feet	62
Top of Arm to Floor	24"	Shipping Weight	265 lbs.
Arm Width	4.25"	Weight Rating	300 lbs. per seat
Cubby Overall Dimensions	12"w x 32.5"d x 24.5"h		
Top of Cubby to Floor	24.5"		
Bottom of Cubby to Floor	13.5"		
Sleep Surface Dimensions	76"w x 29"d x 3.5"h		



76" sleepover with left-side facing arm and right-side facing cubby CL-76AC-MT

Multiple textiles

Overall Dimensions	92.25"w x 32.5"d x 32"h	COM 54" - Seat	2.25 yds.
Seat Dimensions	76"w x 20"d x 18.5"h	COM 54" - Inside Back	2.5 yds.
Top of Arm to Floor	24"	COM 54" - Outside Back	2.5 yds.
Arm Width	4.25"	COM 54" - Arms	1.25 yds.
Cubby Overall Dimensions	12"w x 32.5"d x 24.5"h	Cubic Feet	62
Top of Cubby to Floor	24.5"	Shipping Weight	265 lbs.
Bottom of Cubby to Floor	13.5"	Weight Rating	300 lbs. per seat
Sleep Surface Dimensions	76"w x 29"d x 3.5"h		



80" sleepover with left-side facing arm and right-side facing cubby CL-80AC

Single textiles

Overall Dimensions	96.25"w x 32.5"d x 32"h	COM 54"	7 yds.
Seat Dimensions	80"w x 20"d x 18.5"h	Cubic Feet	65
Top of Arm to Floor	24"	Shipping Weight	278 lbs.
Arm Width	4.25"	Weight Rating	300 lbs. per seat
Cubby Overall Dimensions	12"w x 32.5"d x 24.5"h		
Top of Cubby to Floor	24.5"		
Bottom of Cubby to Floor	13.5"		
Sleep Surface Dimensions	80"w x 29"d x 3.5"h		



80" sleepover with left-side facing arm and right-side facing cubby CL-80AC-MT

Multiple textiles

Overall Dimensions	96.25"w x 32.5"d x 32"h	COM 54" - Seat	2.25 yds.
Seat Dimensions	80"w x 20"d x 18.5"h	COM 54" - Inside Back	2.75 yds.
Top of Arm to Floor	24"	COM 54" - Outside Back	2.75 yds.
Arm Width	4.25"	COM 54" - Arms	1.25 yds.
Cubby Overall Dimensions	12"w x 32.5"d x 24.5"h	Cubic Feet	65
Top of Cubby to Floor	24.5"	Shipping Weight	278 lbs.
Bottom of Cubby to Floor	13.5"	Weight Rating	300 lbs. per seat
Sleep Surface Dimensions	80"w x 29"d x 3.5"h		



Standard Features	Options Available
<ul style="list-style-type: none"> Available in 76" and 80" sleep surface lengths Fully upholstered arm with no arm cap Cubby surfaces are standard in 3DL Spring seat construction 360° clean-thru design Cast aluminum legs and extruded aluminum frame 10" High base design provides easy access for maintenance Non-marring adjustable glides Casters (optional) feature red safety lock to improve visibility for users Easily converts from seating to sleeping with a mechanism-free, low-maintenance design Sleep surface is upholstered in exclusive SleepShield polyurethane coating with enhanced chemical resistance, applied to four-way stretch polyester weft-knit fabric. Safety feature indicators, including red details on the locking casters and the sleep cushion straps 	Arm caps <ul style="list-style-type: none"> Resin (Black, Shadow, and Folkstone Grey) 3DL (Standard finish offering) Solid surface (Cameo White, Modern White, Medea, and Polaris)
	Cubby surface <ul style="list-style-type: none"> Storage cubbies are available with either a partially or fully covered top (spill groove is available on the top) Laminate (Standard 3DL offering) Solid surface (Cameo White, Modern White, Medea, and Polaris) Optional powder-coated coat rack mounts at rear of the cubby
	Base <ul style="list-style-type: none"> Glides or dual-locking casters (Black or Grey) Powder-coated base (Bone White, Chalk, Ion, Luster Grey, Oiled Bronze, Onyx, and Stone) Wall-saver bumpers are available on all four legs or rear legs only
	Power <ul style="list-style-type: none"> Power is under-mounted (specify left and/or right-facing) The unit can be positioned anywhere along the base (1) Power outlet and (2) USB-A outlets Available in Silver, Deep Space, and Black The cord is 10' long

76" sleepover with left-side facing cubby and right-side facing arm CL-76CA

Single textiles

Overall Dimensions	92.25"w x 32.5"d x 32"h	COM 54"	6.5 yds.
Seat Dimensions	76"w x 20"d x 18.5"h	Cubic Feet	62
Top of Arm to Floor	24"	Shipping Weight	265 lbs.
Arm Width	4.25"	Weight Rating	300 lbs. per seat
Cubby Overall Dimensions	12"w x 32.5"d x 24.5"h		
Top of Cubby to Floor	24.5"		
Bottom of Cubby to Floor	13.5"		
Sleep Surface Dimensions	76"w x 29"d x 3.5"h		



76" sleepover with left-side facing cubby and right-side facing arm CL-76CA-MT

Multiple textiles

Overall Dimensions	92.25"w x 32.5"d x 32"h	COM 54" - Seat	2.25 yds.
Seat Dimensions	76"w x 20"d x 18.5"h	COM 54" - Inside Back	2.5 yds.
Top of Arm to Floor	24"	COM 54" - Outside Back	2.5 yds.
Arm Width	4.25"	COM 54" - Arms	1.25 yds.
Cubby Overall Dimensions	12"w x 32.5"d x 24.5"h	Shipping Weight	265 lbs.
Top of Cubby to Floor	24.5"	Weight Rating	300 lbs. per seat
Bottom of Cubby to Floor	13.5"		
Sleep Surface Dimensions	76"w x 29"d x 3.5"h		



80" sleepover with left-side facing cubby and right-side facing arm CL-80CA

Single textiles

Overall Dimensions	96.25"w x 32.5"d x 32"h	COM 54"	7 yds.
Seat Dimensions	80"w x 20"d x 18.5"h	Cubic Feet	65
Top of Arm to Floor	24"	Shipping Weight	278 lbs.
Arm Width	4.25"	Weight Rating	300 lbs. per seat
Cubby Overall Dimensions	12"w x 32.5"d x 24.5"h		
Top of Cubby to Floor	24.5"		
Bottom of Cubby to Floor	13.5"		
Sleep Surface Dimensions	80"w x 29"d x 3.5"h		



80" sleepover with left-side facing cubby and right-side facing arm CL-80CA-MT

Multiple textiles

Overall Dimensions	96.25"w x 32.5"d x 32"h	COM 54" - Seat	2.25 yds.
Seat Dimensions	80"w x 20"d x 18.5"h	COM 54" - Inside Back	2.75 yds.
Top of Arm to Floor	24"	COM 54" - Outside Back	2.75 yds.
Arm Width	4.25"	COM 54" - Arms	1.25 yds.
Cubby Overall Dimensions	12"w x 32.5"d x 24.5"h	Cubic Feet	65
Top of Cubby to Floor	24.5"	Shipping Weight	278 lbs.
Bottom of Cubby to Floor	13.5"	Weight Rating	300 lbs. per seat
Sleep Surface Dimensions	80"w x 29"d x 3.5"h		

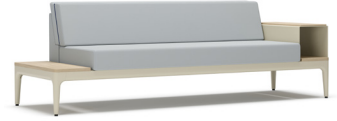


Standard Features	Options Available
<ul style="list-style-type: none"> Available in 76" and 80" sleep surface lengths Fully upholstered arm with no arm cap Cubby surfaces are standard in 3DL Spring seat construction 360° clean-thru design Cast aluminum legs and extruded aluminum frame 10" High base design provides easy access for maintenance Non-marring adjustable glides Casters (optional) feature red safety lock to improve visibility for users Easily converts from seating to sleeping with a mechanism-free, low-maintenance design Sleep surface is upholstered in exclusive SleepShield polyurethane coating with enhanced chemical resistance, applied to four-way stretch polyester weft-knit fabric. Safety feature indicators, including red details on the locking casters and the sleep cushion straps 	Arm caps <ul style="list-style-type: none"> Resin (Black, Shadow, and Folkstone Grey) 3DL (Standard finish offering) Solid surface (Cameo White, Modern White, Medea, and Polaris)
	Cubby surface <ul style="list-style-type: none"> Storage cubbies are available with either a partially or fully covered top (spill groove is available on the top) Laminate (Standard 3DL offering) Solid surface (Cameo White, Modern White, Medea, and Polaris) Optional powder-coated coat rack mounts at rear of the cubby
	Base <ul style="list-style-type: none"> Glides or dual-locking casters (Black or Grey) Powder-coated base (Bone White, Chalk, Ion, Luster Grey, Oiled Bronze, Onyx, and Stone) Wall-saver bumpers are available on all four legs or rear legs only
	Power <ul style="list-style-type: none"> Power is under-mounted (specify left and/or right-facing) The unit can be positioned anywhere along the base (1) Power outlet and (2) USB-A outlets Available in Silver, Deep Space, and Black The cord is 10' long

76" sleepover with left-side facing table and right-side facing cubby CL-76TC

Single textiles

Overall Dimensions	100"w x 32.5"d x 32"h	COM 54"	6.5 yds.
Seat Dimensions	76"w x 20"d x 18.5"h	Cubic Feet	67
Table Dimensions	11.625"w x 32.125"d x 13.5"h	Shipping Weight	265 lbs.
Cubby Overall Dimensions	12"w x 32.5"d x 24.5"h	Weight Rating	300 lbs. per seat
Top of Cubby to Floor	24.5"		
Bottom of Cubby to Floor	13.5"		
Sleep Surface Dimensions	76"w x 29"d x 3.5"h		



76" sleepover with left-side facing table and right-side facing cubby CL-76TC-MT

Multiple textiles

Overall Dimensions	100"w x 32.5"d x 32"h	COM 54" - Seat	2.25 yds.
Seat Dimensions	76"w x 20"d x 18.5"h	COM 54" - Inside Back	2.5 yds.
Table Dimensions	11.625"w x 32.125"d x 13.5"h	COM 54" - Outside Back	2.5 yds.
Cubby Overall Dimensions	12"w x 32.5"d x 24.5"h	Cubic Feet	67
Top of Cubby to Floor	24.5"	Shipping Weight	265 lbs.
Bottom of Cubby to Floor	13.5"	Weight Rating	300 lbs. per seat
Sleep Surface Dimensions	76"w x 29"d x 3.5"h		



80" sleepover with left-side facing table and right-side facing cubby CL-80TC

Single textiles

Overall Dimensions	104"w x 32.5"d x 32"h	COM 54"	7 yds.
Seat Dimensions	80"w x 20"d x 18.5"h	Cubic Feet	70
Table Dimensions	11.625"w x 32.125"d x 13.5"h	Shipping Weight	278 lbs.
Cubby Overall Dimensions	12"w x 32.5"d x 24.5"h	Weight Rating	300 lbs. per seat
Top of Cubby to Floor	24.5"		
Bottom of Cubby to Floor	13.5"		
Sleep Surface Dimensions	80"w x 29"d x 3.5"h		



80" sleepover with left-side facing table and right-side facing cubby CL-80TC-MT

Multiple textiles

Overall Dimensions	104"w x 32.5"d x 32"h	COM 54" - Seat	2.25 yds.
Seat Dimensions	80"w x 20"d x 18.5"h	COM 54" - Inside Back	2.75 yds.
Table Dimensions	11.625"w x 32.125"d x 13.5"h	COM 54" - Outside Back	2.75 yds.
Cubby Overall Dimensions	12"w x 32.5"d x 24.5"h	Cubic Feet	70
Top of Cubby to Floor	24.5"	Shipping Weight	278 lbs.
Bottom of Cubby to Floor	13.5"	Weight Rating	300 lbs. per seat
Sleep Surface Dimensions	80"w x 29"d x 3.5"h		

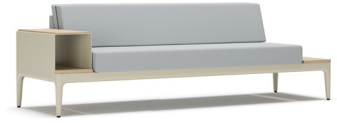


Standard Features	Options Available
<ul style="list-style-type: none"> Available in 76" and 80" sleep surface lengths Table surfaces are standard in 3DL Cubby surfaces are standard in 3DL Spring seat construction 360° clean-thru design Cast aluminum legs and extruded aluminum frame 10" High base design provides easy access for maintenance Non-marring adjustable glides Casters (optional) feature red safety lock to improve visibility for users Easily converts from seating to sleeping with a mechanism-free, low-maintenance design Sleep surface is upholstered in exclusive SleepShield polyurethane coating with enhanced chemical resistance, applied to four-way stretch polyester weft-knit fabric. Safety feature indicators, including red details on the locking casters and the sleep cushion straps 	Table surface <ul style="list-style-type: none"> Laminate (Standard 3DL offering) Solid surface (Cameo White, Modern White, Medea, and Polaris) Spill groove is available on 3DL and solid surface
	Cubby surface <ul style="list-style-type: none"> Storage cubbies are available with either a partially or fully covered top (spill groove is available on the top) Laminate (Standard 3DL offering) Solid surface (Cameo White, Modern White, Medea, and Polaris) Optional powder-coated coat rack mounts at rear of the cubby
	Base <ul style="list-style-type: none"> Glides or dual-locking casters (Black or Grey) Powder-coated base (Bone White, Chalk, Ion, Luster Grey, Oiled Bronze, Onyx, and Stone) Wall-saver bumpers are available on all four legs or rear legs only
	Power <ul style="list-style-type: none"> Power is under-mounted (specify left and/or right-facing) The unit can be positioned anywhere along the base (1) Power outlet and (2) USB-A outlets Available in Silver, Deep Space, and Black The cord is 10' long

76" sleepover with left-side facing cubby and right-side facing table CL-76CT

Single textiles

Overall Dimensions	100"w x 32.5"d x 32"h	COM 54"	6.5 yds.
Seat Dimensions	76"w x 20"d x 18.5"h	Cubic Feet	67
Table Dimensions	11.625"w x 32.125"d x 13.5"h	Shipping Weight	265 lbs.
Cubby Overall Dimensions	12"w x 32.5"d x 24.5"h	Weight Rating	300 lbs. per seat
Top of Cubby to Floor	24.5"		
Bottom of Cubby to Floor	13.5"		
Sleep Surface Dimensions	76"w x 29"d x 3.5"h		



76" sleepover with left-side facing cubby and right-side facing table CL-76CT-MT

Multiple textiles

Overall Dimensions	100"w x 32.5"d x 32"h	COM 54" - Seat	2.25 yds.
Seat Dimensions	76"w x 20"d x 18.5"h	COM 54" - Inside Back	2.5 yds.
Table Dimensions	11.625"w x 32.125"d x 13.5"h	COM 54" - Outside Back	2.5 yds.
Cubby Overall Dimensions	12"w x 32.5"d x 24.5"h	Shipping Weight	265 lbs.
Top of Cubby to Floor	24.5"	Weight Rating	300 lbs. per seat
Bottom of Cubby to Floor	13.5"		
Sleep Surface Dimensions	76"w x 29"d x 3.5"h		



80" sleepover with left-side facing cubby and right-side facing table CL-80CT

Single textiles

Overall Dimensions	104"w x 32.5"d x 32"h	COM 54"	7 yds.
Seat Dimensions	80"w x 20"d x 18.5"h	Cubic Feet	70
Table Dimensions	11.625"w x 32.125"d x 13.5"h	Shipping Weight	278 lbs.
Cubby Overall Dimensions	12"w x 32.5"d x 24.5"h	Weight Rating	300 lbs. per seat
Top of Cubby to Floor	24.5"		
Bottom of Cubby to Floor	13.5"		
Sleep Surface Dimensions	80"w x 29"d x 3.5"h		



80" sleepover with left-side facing cubby and right-side facing table CL-80CT-MT

Multiple textiles

Overall Dimensions	104"w x 32.5"d x 32"h	COM 54" - Seat	2.25 yds.
Seat Dimensions	80"w x 20"d x 18.5"h	COM 54" - Inside Back	2.75 yds.
Table Dimensions	11.625"w x 32.125"d x 13.5"h	COM 54" - Outside Back	2.75 yds.
Cubby Overall Dimensions	12"w x 32.5"d x 24.5"h	Cubic Feet	70
Top of Cubby to Floor	24.5"	Shipping Weight	278 lbs.
Bottom of Cubby to Floor	13.5"	Weight Rating	300 lbs. per seat
Sleep Surface Dimensions	80"w x 29"d x 3.5"h		



Standard Features	Options Available
<ul style="list-style-type: none"> Available in 76" and 80" sleep surface lengths Table surfaces are standard in 3DL Cubby surfaces are standard in 3DL Spring seat construction 360° clean-thru design Cast aluminum legs and extruded aluminum frame 10" High base design provides easy access for maintenance Non-marring adjustable glides Casters (optional) feature red safety lock to improve visibility for users Easily converts from seating to sleeping with a mechanism-free, low-maintenance design Sleep surface is upholstered in exclusive SleepShield polyurethane coating with enhanced chemical resistance, applied to four-way stretch polyester weft-knit fabric. Safety feature indicators, including red details on the locking casters and the sleep cushion straps 	Table surface <ul style="list-style-type: none"> Laminate (Standard 3DL offering) Solid surface (Cameo White, Modern White, Medea, and Polaris) Spill groove is available on 3DL and solid surface
	Cubby surface <ul style="list-style-type: none"> Storage cubbies are available with either a partially or fully covered top (spill groove is available on the top) Laminate (Standard 3DL offering) Solid surface (Cameo White, Modern White, Medea, and Polaris) Optional powder-coated coat rack mounts at rear of the cubby
	Base <ul style="list-style-type: none"> Glides or dual-locking casters (Black or Grey) Powder-coated base (Bone White, Chalk, Ion, Luster Grey, Oiled Bronze, Onyx, and Stone) Wall-saver bumpers are available on all four legs or rear legs only
	Power <ul style="list-style-type: none"> Power is under-mounted (specify left and/or right-facing) The unit can be positioned anywhere along the base (1) Power outlet and (2) USB-A outlets Available in Silver, Deep Space, and Black The cord is 10' long

76" sleepover with left-side facing cubby and right-side facing cubby CL-76CC

Single textiles

Overall Dimensions	100"w x 32.5"d x 32"h	COM 54"	6.5 yds.
Seat Dimensions	76"w x 20"d x 18.5"h	Cubic Feet	67
Cubby Overall Dimensions	12"w x 32.5"d x 24.5"h	Shipping Weight	335 lbs.
Top of Cubby to Floor	24.5"	Weight Rating	300 lbs. per seat
Bottom of Cubby to Floor	13.5"		
Sleep Surface Dimensions	76"w x 29"d x 3.5"h		



76" sleepover with left-side facing cubby and right-side facing cubby CL-76CC-MT

Multiple textiles

Overall Dimensions	100"w x 32.5"d x 32"h	COM 54" - Seat	2.25 yds.
Seat Dimensions	76"w x 20"d x 18.5"h	COM 54" - Inside Back	2.5 yds.
Cubby Overall Dimensions	12"w x 32.5"d x 24.5"h	COM 54" - Outside Back	2.5 yds.
Top of Cubby to Floor	24.5"	Cubic Feet	67
Bottom of Cubby to Floor	13.5"	Shipping Weight	335 lbs.
Sleep Surface Dimensions	76"w x 29"d x 3.5"h	Weight Rating	300 lbs. per seat



80" sleepover with left-side facing cubby and right-side facing cubby CL-80CC

Single textiles

Overall Dimensions	104"w x 32.5"d x 32"h	COM 54"	7 yds.
Seat Dimensions	80"w x 20"d x 18.5"h	Cubic Feet	70
Cubby Overall Dimensions	12"w x 32.5"d x 24.5"h	Shipping Weight	348 lbs.
Top of Cubby to Floor	24.5"	Weight Rating	300 lbs. per seat
Bottom of Cubby to Floor	13.5"		
Sleep Surface Dimensions	80"w x 29"d x 3.5"h		



80" sleepover with left-side facing cubby and right-side facing cubby CL-80CC-MT

Multiple textiles

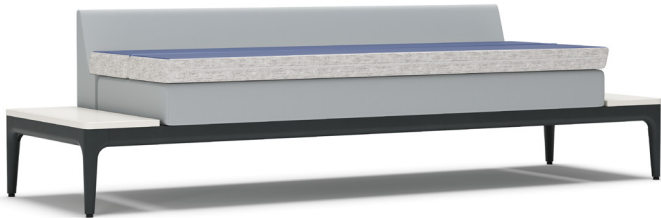
Overall Dimensions	104"w x 32.5"d x 32"h	COM 54" - Seat	2.25 yds.
Seat Dimensions	80"w x 20"d x 18.5"h	COM 54" - Inside Back	2.5 yds.
Cubby Overall Dimensions	12"w x 32.5"d x 24.5"h	COM 54" - Outside Back	2.5 yds.
Top of Cubby to Floor	24.5"	Cubic Feet	70
Bottom of Cubby to Floor	13.5"	Shipping Weight	348 lbs.
Sleep Surface Dimensions	80"w x 29"d x 3.5"h	Weight Rating	300 lbs. per seat



Standard Features	Options Available
<ul style="list-style-type: none"> Available in 76" and 80" sleep surface lengths Cubby surfaces are standard in 3DL Spring seat construction 360° clean-thru design Cast aluminum legs and extruded aluminum frame 10" High base design provides easy access for maintenance Non-marring adjustable glides Casters (optional) feature red safety lock to improve visibility for users Easily converts from seating to sleeping with a mechanism-free, low-maintenance design Sleep surface is upholstered in exclusive SleepShield polyurethane coating with enhanced chemical resistance, applied to four-way stretch polyester weft-knit fabric. Safety feature indicators, including red details on the locking casters and the sleep cushion straps 	Cubby surface <ul style="list-style-type: none"> Storage cubbies are available with either a partially or fully covered top (spill groove is available on the top) Laminate (Standard 3DL offering) Solid surface (Cameo White, Modern White, Medea, and Polaris) Optional powder-coated coat rack mounts at rear of the cubby
	Base <ul style="list-style-type: none"> Glides or dual-locking casters (Black or Grey) Powder-coated base (Bone White, Chalk, Ion, Luster Grey, Oiled Bronze, Onyx, and Stone) Wall-saver bumpers are available on all four legs or rear legs only
	Power <ul style="list-style-type: none"> Power is under-mounted (specify left and/or right-facing) The unit can be positioned anywhere along the base (1) Power outlet and (2) USB-A outlets Available in Silver, Deep Space, and Black The cord is 10' long

Sleep surface

76" Sleep Surface	76"w x 29"d
80" Sleep Surface	80"w x 29"d
Cushion Thickness	3.5"



Standard Features

- Available in 76" and 80" sleep surface lengths
- Mechanism-free design
- Unique foam construction exclusive to Offshore
- Safety feature indicators, including red details sleep cushion straps

SleepShield Features + Benefits

- *Advanced chemical resistance* — Resistant to harsh chemical cleaning agents, ensuring a long-lasting product lifespan
- *Four-way stretch* — Enhances patient comfort and pressure redistribution.
- *No delamination* — Engineered for long-term performance without peeling or breakdown
- *Breathable & comfortable* — Supports immersion and envelopment properties essential for pressure injury prevention
- *Waterproof barrier* — Provides a fluid-proof, virus-proof surface for infection control.
- *Anti-microbial* — Tested to AATCC 30 & ISO 22196 standards, containing an anti-fungal agent to prevent microbial deterioration.
- *Wipe clean* — Designed for easy maintenance and sanitation in high-use environments.
- *UV printable* — Proprietary, odor-free ink that doesn't crack when stretched.
- *100% Recycled yarn* — Certified to the Global Recycled Standard for eco-conscious material sourcing.
- *Halogen-free flame retardants* — Meets healthcare compliance standards while reducing environmental impact.
- *UV printable* — Proprietary, odor-free ink that doesn't crack when stretched.

Arm with no arm cap

Overall Dimensions	4.25"w x 32.5"d x 24"h
Arm Height From Floor	24"
Arm Height From Seat	5.5"



Arm with resin arm cap

Overall Dimensions	4.25"w x 32.5"d x 24.5"h
Arm Height From Floor	24.5"
Arm Height From Seat	6"



Arm with 3DL arm cap

Overall Dimensions	4.25"w x 32.5"d x 24.75"h
Arm Height From Floor	24.75"
Arm Height From Seat	6.25"



Arm with solid surface arm cap

Overall Dimensions	4.25"w x 32.5"d x 24.5"h
Arm Height From Floor	24.5"
Arm Height From Seat	6"



3DL table

Overall Dimensions	11.625"w x 32.125"d x 13.5"h
Table to Floor	13.5"
Table to Seat	5"



Solid surface table

Overall Dimensions	11.625"w x 32.125"d x 13.5"h
Table to Floor	13.5"
Table to Seat	5"



3DL table with spill groove

Overall Dimensions	11.625"w x 32.125"d x 13.5"h
Table to Floor	13.5"
Table to Seat	5"



Solid surface table with spill groove

Overall Dimensions	11.625"w x 32.125"d x 13.5"h
Table to Floor	13.5"
Table to Seat	5"



Full cubby

Cubby Overall Dimensions	12"w x 32.5"d x 24.5"h
Cubby Interior Dimensions	11.625"w x 32.125"d x 10.25"h
Top of Cubby to Floor	24.5"
Bottom of Cubby to Floor	13.5"
Bottom of Cubby to Top	11"



Partial cubby

Cubby Overall Dimensions	12"w x 32.5"d x 24.5"h
Cubby Interior Dimensions	11.625"w x 32.125"d x 10.25"h
Top of Cubby to Floor	24.5"
Bottom of Cubby to Floor	13.5"
Bottom of Cubby to Top	11"



Full cubby with coat rack

Overall Dimensions	12"w x 32.5"d x 64"h
Cubby Overall Dimensions	12"w x 32.5"d x 24.5"h
Cubby Interior Dimensions	11.625"w x 32.125"d x 10.25"h
Top of Cubby to Floor	24.5"
Bottom of Cubby to Floor	13.5"
Bottom of Cubby to Top	11"
Coat Rack Height from Floor	64"



Partial cubby with coat rack

Overall Dimensions	12"w x 32.5"d x 64"h
Cubby Overall Dimensions	12"w x 32.5"d x 24.5"h
Cubby Interior Dimensions	11.625"w x 32.125"d x 10.25"h
Top of Cubby to Floor	24.5"
Bottom of Cubby to Floor	13.5"
Bottom of Cubby to Top	11"
Coat Rack Height from Floor	64"

