

**Lounge Chair 810-1**

<b>Overall Dimensions</b>	26" w x 27" d x 31.5" h	<b>COM 54"</b>	3.75 yds.
<b>Seat Dimensions</b>	22" w x 20.25" d x 16.5" h	<b>Weight</b>	56 lbs.
<b>Seat to Top of Back</b>	15"	<b>Cubic Feet</b>	18
<b>Top of Arm to Floor</b>	24.5"	<b>Exposed Wood</b>	European beech



**Settee 810-3**

<b>Overall Dimensions</b>	59" w x 27" d x 31.5" h	<b>COM 54"</b>	6.25 yds.
<b>Seat Dimensions</b>	55" w x 20.25" d x 16.5" h	<b>Weight</b>	80 lbs.
<b>Seat to Top of Back</b>	15"	<b>Cubic Feet</b>	40
<b>Top of Arm to Floor</b>	24.5"	<b>Exposed Wood</b>	European beech



**Open Arm lounge chair 811-1**

<b>Overall Dimensions</b>	25.25" w x 27" d x 31.5" h	<b>COM 54"</b>	2.75 yds.
<b>Seat Dimensions</b>	22" w x 20.25" d x 16.5" h	<b>Weight</b>	48 lbs.
<b>Seat to Top of Back</b>	15"	<b>Cubic Feet</b>	18
<b>Top of Arm to Floor</b>	24.5"	<b>Exposed Wood</b>	European beech



**Open Arm Settee 811-3**

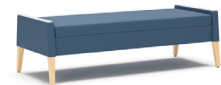
<b>Overall Dimensions</b>	58.25" w x 27" d x 31.5" h	<b>COM 54"</b>	5.25 yds.
<b>Seat Dimensions</b>	55" w x 20.25" d x 16.5" h	<b>Weight</b>	72 lbs.
<b>Seat to Top of Back</b>	15"	<b>Cubic Feet</b>	40
<b>Top of Arm to Floor</b>	24.5"	<b>Exposed Wood</b>	European beech



Standard Features	Options Available
<ul style="list-style-type: none"> <li>• Solid hardwood frame is available in veneer or paint</li> <li>• Mortise-and-tenon construction</li> <li>• Clean-thru design</li> <li>• Field replaceable components</li> <li>• Wall-saver design</li> <li>• Non-marring adjustable glides</li> </ul>	<ul style="list-style-type: none"> <li>• Wood arm caps (810-1 and 810-3 only)</li> <li>• Resin arm caps</li> <li>• Solid surface arm caps</li> <li>• Left or right side facing power</li> <li>• White, black or silver power</li> </ul>

**Bench 810-B**

<b>Overall Dimensions</b>	59" w x 24.75" d x 17.5" h	<b>COM 54"</b>	3.25 yds.
<b>Seat Dimensions</b>	55" w x 21.75" d x 16.5" h	<b>Weight</b>	73 lbs.
<b>Seat to Top of Back</b>	n/a	<b>Cubic Feet</b>	26
<b>Top of Arm to Floor</b>	17.5"	<b>Exposed Wood</b>	European beech



**Open arm bench 811-B**

<b>Overall Dimensions</b>	58.25" w x 24.75" d x 17.5" h	<b>COM 54"</b>	2.25 yds.
<b>Seat Dimensions</b>	55" w x 21.75" d x 16.5" h	<b>Weight</b>	45 lbs.
<b>Seat to Top of Back</b>	n/a	<b>Cubic Feet</b>	26
<b>Top of Arm to Floor</b>	17.5"	<b>Exposed Wood</b>	European beech



Standard Features	Options Available
<ul style="list-style-type: none"> <li>• Solid hardwood frame</li> <li>• Mortise-and-tenon construction</li> <li>• Clean-thru design</li> <li>• Field replaceable components</li> <li>• Wall-saver design</li> <li>• Non-marring adjustable glides</li> </ul>	<ul style="list-style-type: none"> <li>• Wood arm caps (810-B only)</li> <li>• Resin arm caps</li> <li>• Solid surface arm caps</li> <li>• Left or right side facing power</li> <li>• White, black or silver power</li> </ul>

**Standard Textile & Finish Selection**

---

<http://carolina.ofs.com/resources/textiles>  
<http://carolina.ofs.com/resources/finishes>

**Frame Construction**

---

- Seat • Hard plywood, EZ frame
- Back • All components are made with plywood
- Upholstery • All textile and leather pieces are cut with automated cutters that utilize precise patterns
- Arms • Inside and outside arm panel plywood
- Assembly • Joints on seat, back, and arms are assembled using dowels, mortise and tenon, corner blocks, and glue  
• Seat, back, arms and mechanism are assembled using #8/#10 screws

**Foam**

---

- Seat/Back • Premium grade foam  
• CAL TB 117 Certified Fire Retardant  
• 70 compression  
• 2.5 lb. density