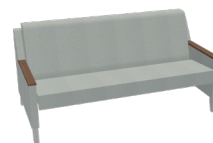


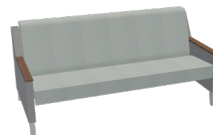
68" sleepover with straight arms and open front 8070-68

Overall Dimensions	74"w x 33.75"d x 35.75"h	COM 54"	8.75 yds.
Seat Dimensions	68.75"w x 20"d x 18.75"h	Shipping Weight	280 lbs.
Seat to Top of Back	22"	Cubic Feet	60
Top of Arm to Floor	23.25"		
Sleep Surface Length	68"w x 29"d		



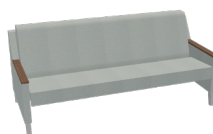
72" sleepover with straight arm and open front 8070-72

Overall Dimensions	78"w x 33.75"d x 35.75"h	COM 54"	9 yds.
Seat Dimensions	72.75"w x 20"d x 18.75"h	Shipping Weight	290 lbs.
Seat to Top of Back	22"	Cubic Feet	60
Top of Arm to Floor	23.25"		
Sleep Surface Length	72"w x 29"d		



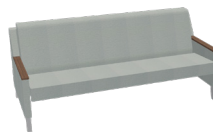
76" sleepover with straight arm and open front 8070-76

Overall Dimensions	82"w x 33.75"d x 35.75"h	COM 54"	9.75 yds.
Seat Dimensions	76.75"w x 20"d x 18.75"h	Shipping Weight	300 lbs.
Seat to Top of Back	22"	Cubic Feet	65
Top of Arm to Floor	23.25"		
Sleep Surface Length	76"w x 29"d		



80" sleepover with straight arms and open front 8080-80

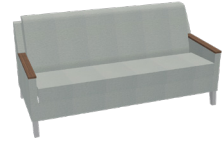
Overall Dimensions	86"w x 33.75"d x 35.75"h	COM 54"	13.25 yds.
Seat Dimensions	80.75"w x 20"d x 18.75"h	Shipping Weight	310 lbs.
Seat to Top of Back	22"	Cubic Feet	65
Top of Arm to Floor	23.25"		
Sleep Surface Length	80"w x 29"d		



Standard Features	Options Available
<ul style="list-style-type: none"> 68-80" Sleep surfaces Upholstered seat, back, and arms Straight upholstered arm with European beech arm cap comes standard Open under the seat Tight cushion on seat Back cushion is semi-attached and movable with mechanism 3/4" Thick black back panel located between the modesty and the upholstered back Black antimicrobial sleep surface Warm grey (with silvr ion antimicrobial) powder coat on legs with no trim detail between front and back legs Non-marring adjustable glides 	<ul style="list-style-type: none"> Wood, solid surface, or black poly arm caps Wood or metal trim side detail Casters Left or right side facing tablet in 3DL Removable seat cover Veneer or TFL shelf under the seat Solid or individual seat cushion <p>Power:</p> <ul style="list-style-type: none"> Two 10 Amp Electrical Outlets 6' Power Cord Anodized Aluminum Finish 5.1"w x 4.4"d x 3.25"h

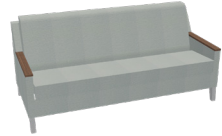
68" sleepover with straight arms and upholstered front 8070-68U

Overall Dimensions	74"w x 33.75"d x 35.75"h	COM 54"	9.25 yds.
Seat Dimensions	68.75"w x 20"d x 18.75"h	Shipping Weight	280 lbs.
Seat to Top of Back	22"	Cubic Feet	60
Top of Arm to Floor	23.25"		
Sleep Surface Length	68"w x 29"d		



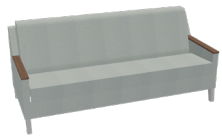
72" sleepover with straight arm and upholstered front 8070-72U

Overall Dimensions	78"w x 33.75"d x 35.75"h	COM 54"	9.75 yds.
Seat Dimensions	72.75"w x 20"d x 18.75"h	Shipping Weight	290 lbs.
Seat to Top of Back	22"	Cubic Feet	60
Top of Arm to Floor	23.25"		
Sleep Surface Length	72"w x 29"d		



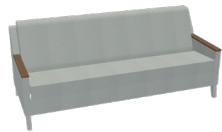
76" sleepover with straight arm and upholstered front 8070-76U

Overall Dimensions	82"w x 33.75"d x 35.75"h	COM 54"	10.5 yds.
Seat Dimensions	76.75"w x 20"d x 18.75"h	Shipping Weight	300 lbs.
Seat to Top of Back	22"	Cubic Feet	65
Top of Arm to Floor	23.25"		
Sleep Surface Length	76"w x 29"d		



80" sleepover with straight arms and upholstered front 8080-80U

Overall Dimensions	86"w x 33.75"d x 35.75"h	COM 54"	14.25 yds.
Seat Dimensions	80.75"w x 20"d x 18.75"h	Shipping Weight	310 lbs.
Seat to Top of Back	22"	Cubic Feet	65
Top of Arm to Floor	23.25"		
Sleep Surface Length	80"w x 29"d		



Standard Features	Options Available
<ul style="list-style-type: none"> • 68-80" Sleep surfaces • Upholstered seat, back, and arms • Straight upholstered arm with European beech arm cap comes standard • Upholstered front modesty panel • Tight cushion on seat • Back cushion is semi-attached and movable with mechanism • 3/4" Thick black back panel located between the modesty and the upholstered back • Black antimicrobial sleep surface • Warm grey (with silvr ion antimicrobial) powder coat on legs with no trim detail between front and back legs • Non-marring adjustable glides 	<ul style="list-style-type: none"> • Wood, solid surface, or black poly arm caps • Wood or metal trim side detail • Casters • Left or right side facing tablet in 3DL • Removable seat cover • Upholstered front modesty panel or two upholstered drawer fronts • Solid or individual seat cushion <p>Power:</p> <ul style="list-style-type: none"> • Two 10 Amp Electrical Outlets • 6' Power Cord • Anodized Aluminum Finish • 5.1"w x 4.4"d x 3.25"h

68" sleepover with straight arms and veneer/3DL front 8070-68W

Overall Dimensions	74"w x 33.75"d x 35.75"h	COM 54"	8.75 yds.
Seat Dimensions	68.75"w x 20"d x 18.75"h	Shipping Weight	280 lbs.
Seat to Top of Back	22"	Cubic Feet	60
Top of Arm to Floor	23.25"		
Sleep Surface Length	68"w x 29"d		



72" sleepover with straight arm and veneer/3DL front 8070-72W

Overall Dimensions	78"w x 33.75"d x 35.75"h	COM 54"	9 yds.
Seat Dimensions	72.75"w x 20"d x 18.75"h	Shipping Weight	290 lbs.
Seat to Top of Back	22"	Cubic Feet	60
Top of Arm to Floor	23.25"		
Sleep Surface Length	72"w x 29"d		



76" sleepover with straight arm and veneer/3DL front 8070-76W

Overall Dimensions	82"w x 33.75"d x 35.75"h	COM 54"	9.75 yds.
Seat Dimensions	76.75"w x 20"d x 18.75"h	Shipping Weight	300 lbs.
Seat to Top of Back	22"	Cubic Feet	65
Top of Arm to Floor	23.25"		
Sleep Surface Length	76"w x 29"d		



80" sleepover with straight arms and veneer/3DL front 8080-80W

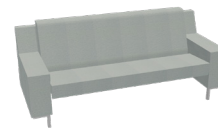
Overall Dimensions	86"w x 33.75"d x 35.75"h	COM 54"	13.25 yds.
Seat Dimensions	80.75"w x 20"d x 18.75"h	Shipping Weight	310 lbs.
Seat to Top of Back	22"	Cubic Feet	65
Top of Arm to Floor	23.25"		
Sleep Surface Length	80"w x 29"d		



Standard Features	Options Available
<ul style="list-style-type: none"> • 68-80" Sleep surfaces • Upholstered seat, back, and arms • Straight upholstered arm with European beech arm cap comes standard • Veneer or 3DL front modesty panel • Tight cushion on seat • Back cushion is semi-attached and movable with mechanism • 3/4" Thick black back panel located between the modesty and the upholstered back • Black antimicrobial sleep surface • Warm grey (with silvr ion antimicrobial) powder coat on legs with no trim detail between front and back legs • Non-marring adjustable glides 	<ul style="list-style-type: none"> • Wood, solid surface, or black poly arm caps • Wood or metal trim side detail • Casters • Left or right side facing tablet in 3DL • Removable seat cover • Veneer or 3DL front modesty panel • Two veneer or 3DL drawer fronts • Solid or individual seat cushion <p>Power:</p> <ul style="list-style-type: none"> • Two 10 Amp Electrical Outlets • 6' Power Cord • Anodized Aluminum Finish • 5.1"w x 4.4"d x 3.25"h

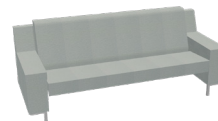
68" sleepover with box arms and open front 8080-68

Overall Dimensions	85.75"w x 33.25"d x 35.75"h	COM 54"	9.75 yds.
Seat Dimensions	68.75"w x 20"d x 18.75"h	Shipping Weight	280 lbs.
Seat to Top of Back	22"	Cubic Feet	78
Top of Arm to Floor	23"		
Sleep Surface Length	68"w x 29"d		



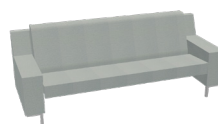
72" sleepover with box arms and open front 8080-72

Overall Dimensions	89.75"w x 33.25"d x 35.75"h	COM 54"	10 yds.
Seat Dimensions	72.75"w x 20"d x 18.75"h	Shipping Weight	290 lbs.
Seat to Top of Back	22"	Cubic Feet	78
Top of Arm to Floor	23"		
Sleep Surface Length	72"w x 29"d		



76" sleepover with box arms and open front 8080-76

Overall Dimensions	93.75"w x 33.25"d x 35.75"h	COM 54"	11.25 yds.
Seat Dimensions	76.75"w x 20"d x 18.75"h	Shipping Weight	300 lbs.
Seat to Top of Back	22"	Cubic Feet	94
Top of Arm to Floor	23"		
Sleep Surface Length	68"w x 29"d		



80" sleepover with box arms and open front 8080-80

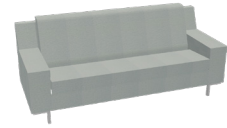
Overall Dimensions	97.75"w x 33.25"d x 35.75"h	COM 54"	13.5 yds.
Seat Dimensions	80.75"w x 20"d x 18.75"h	Shipping Weight	310 lbs.
Seat to Top of Back	22"	Cubic Feet	94
Top of Arm to Floor	23"		
Sleep Surface Length	72"w x 29"d		



Standard Features	Options Available
<ul style="list-style-type: none"> • 68-80" Sleep surfaces • Upholstered seat, back, and arms • Box upholstered arm with no arm cap comes standard • Open under the seat • Tight cushion on seat • Back cushion is semi-attached and movable with mechanism • 3/4" Thick black back panel located between the modesty and the upholstered back • Black antimicrobial sleep surface • Warm grey (with silvr ion antimicrobial) powder coat on legs with no trim detail between front and back legs • Non-marring adjustable glides 	<ul style="list-style-type: none"> • Wood, solid surface, or black poly arm caps • Wood or metal trim side detail • Casters • Left or right side facing tablet in 3DL • Removable seat cover • Veneer or TFL shelf under the seat • Solid or individual seat cushion <p>Power:</p> <ul style="list-style-type: none"> • Two 10 Amp Electrical Outlets • 6' Power Cord • Anodized Aluminum Finish • 5.1"w x 4.4"d x 3.25"h

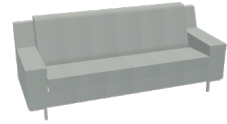
68" sleepover with box arms and upholstered front 8080-68U

Overall Dimensions	85.75"w x 33.25"d x 35.75"h	COM 54"	10.5 yds.
Seat Dimensions	68.75"w x 20"d x 18.75"h	Shipping Weight	280 lbs.
Seat to Top of Back	22"	Cubic Feet	78
Top of Arm to Floor	23"		
Sleep Surface Length	68"w x 29"d		



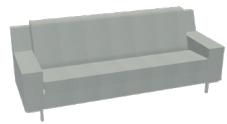
72" sleepover with box arms and upholstered front 8080-72U

Overall Dimensions	89.75"w x 33.25"d x 35.75"h	COM 54"	10.75 yds.
Seat Dimensions	72.75"w x 20"d x 18.75"h	Shipping Weight	290 lbs.
Seat to Top of Back	22"	Cubic Feet	78
Top of Arm to Floor	23"		
Sleep Surface Length	72"w x 29"d		



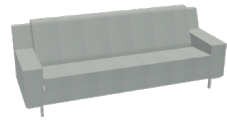
76" sleepover with box arms and upholstered front 8080-76U

Overall Dimensions	93.75"w x 33.25"d x 35.75"h	COM 54"	12.25 yds.
Seat Dimensions	76.75"w x 20"d x 18.75"h	Shipping Weight	300 lbs.
Seat to Top of Back	22"	Cubic Feet	94
Top of Arm to Floor	23"		
Sleep Surface Length	68"w x 29"d		



80" sleepover with box arms and upholstered front 8080-80U

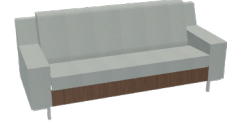
Overall Dimensions	97.75"w x 33.25"d x 35.75"h	COM 54"	14.25 yds.
Seat Dimensions	80.75"w x 20"d x 18.75"h	Shipping Weight	310 lbs.
Seat to Top of Back	22"	Cubic Feet	94
Top of Arm to Floor	23"		
Sleep Surface Length	72"w x 29"d		



Standard Features	Options Available
<ul style="list-style-type: none"> • 68-80" Sleep surfaces • Upholstered seat, back, and arms • Box upholstered arm with no arm cap comes standard • Upholstered front modesty panel • Tight cushion on seat • Back cushion is semi-attached and movable with mechanism • 3/4" Thick black back panel located between the modesty and the upholstered back • Black antimicrobial sleep surface • Warm grey (with silvr ion antimicrobial) powder coat on legs with no trim detail between front and back legs • Non-marring adjustable glides 	<ul style="list-style-type: none"> • Wood, solid surface, or black poly arm caps • Wood or metal trim side detail • Casters • Left or right side facing tablet in 3DL • Removable seat cover • Upholstered front modesty panel or two upholstered drawer fronts • Solid or individual seat cushion <p>Power:</p> <ul style="list-style-type: none"> • Two 10 Amp Electrical Outlets • 6' Power Cord • Anodized Aluminum Finish • 5.1"w x 4.4"d x 3.25"h

68" sleepover with box arms and veneer/3DL front 8080-68W

Overall Dimensions	85.75"w x 33.25"d x 35.75"h	COM 54"	9.75 yds.
Seat Dimensions	68.75"w x 20"d x 18.75"h	Shipping Weight	280 lbs.
Seat to Top of Back	22"	Cubic Feet	78
Top of Arm to Floor	23"		
Sleep Surface Length	68"w x 29"d		



72" sleepover with box arms and veneer/3DL front 8080-72W

Overall Dimensions	89.75"w x 33.25"d x 35.75"h	COM 54"	10 yds.
Seat Dimensions	72.75"w x 20"d x 18.75"h	Shipping Weight	290 lbs.
Seat to Top of Back	22"	Cubic Feet	78
Top of Arm to Floor	23"		
Sleep Surface Length	72"w x 29"d		



76" sleepover with box arms and veneer/3DL front 8080-76W

Overall Dimensions	93.75"w x 33.25"d x 35.75"h	COM 54"	11.25 yds.
Seat Dimensions	76.75"w x 20"d x 18.75"h	Shipping Weight	300 lbs.
Seat to Top of Back	22"	Cubic Feet	94
Top of Arm to Floor	23"		
Sleep Surface Length	68"w x 29"d		



80" sleepover with box arms and veneer/3DL front 8080-80W

Overall Dimensions	97.75"w x 33.25"d x 35.75"h	COM 54"	13.5 yds.
Seat Dimensions	80.75"w x 20"d x 18.75"h	Shipping Weight	310 lbs.
Seat to Top of Back	22"	Cubic Feet	94
Top of Arm to Floor	23"		
Sleep Surface Length	72"w x 29"d		



Standard Features	Options Available
<ul style="list-style-type: none"> • 68-80" Sleep surfaces • Upholstered seat, back, and arms • Box upholstered arm with no arm cap comes standard • Veneer or 3DL front modesty panel • Tight cushion on seat • Back cushion is semi-attached and movable with mechanism • 3/4" Thick black back panel located between the modesty and the upholstered back • Black antimicrobial sleep surface • Warm grey (with silvr ion antimicrobial) powder coat on legs with no trim detail between front and back legs • Non-marring adjustable glides 	<ul style="list-style-type: none"> • Wood, solid surface, or black poly arm caps • Wood or metal trim side detail • Casters • Left or right side facing tablet in 3DL • Removable seat cover • Veneer or 3DL front modesty panel • Two veneer or 3DL drawer fronts • Solid or individual seat cushion <p>Power:</p> <ul style="list-style-type: none"> • Two 10 Amp Electrical Outlets • 6' Power Cord • Anodized Aluminum Finish • 5.1"w x 4.4"d x 3.25"h

Standard Textile & Finish Selection

<http://carolina.ofs.com/design/textiles>
<http://carolina.ofs.com/design/finishes>

Frame Construction

- | | |
|------------|---|
| Seat | <ul style="list-style-type: none"> • Seat consists of a thick piece of 5" thick foam setting on top of a seat box assembly • Seat box assembly is made up of several 0.750" black melamine with pvc edge panels • One side of the seat foam is hinged via Velcro to the seat box, which helps hold the seat in place when it is rotated over into the sleep position. |
| Back | <ul style="list-style-type: none"> • Seat back is an assembled wood back made up of both plywood and solid wood of various thicknesses. • Covered with a thin layer of propex and foam, then it is upholstered • Seat back foam is two individual pieces of 4" thick foam hinges together so to lay flat when the unit is extended out |
| Upholstery | <ul style="list-style-type: none"> • 11 yds. (7058-S76) • 11.5 yds. (7058-S80) • Required based on 54" wide, plain goods • Covers are upholstered to the frame using 1/2" stainless steel staples |
| Arms | <ul style="list-style-type: none"> • Both left and right arm assemblies are made up of various solid wood thicknesses • For 7058-SSR, the right side facing arm extends out to the right creating a long sleep surface • The left side facing arm is stationary and attached to both the seat box assembly and the assembled back • For 7058-SSL, the left side facing arm would extend and the right side facing arm is stationary |
| Assembly | <ul style="list-style-type: none"> • Whichever arm is designated as the extending arm, the metal rolling trundle cart is attached to the inside of that arm using (4) 5/16-18 bolts • The metal trundle cart is made from .750 square tubing powdercoated black with (4) .750 thick black laminated insert panels • When extended out from underneath the seat box assembly, the trundle cart has (2) large open cubbies for storage |

Foam

- | | |
|-----------|---|
| Seat/Back | <ul style="list-style-type: none"> • Premium Grade Foam • CAL TB 117 Certified Fire Retardant |
|-----------|---|