

**Lounge chair upholstered arms 471BHU-1**  
Single textiles

<b>Overall Dimensions</b>	28"w x 25.75"d x 31"h	<b>COM 54"</b>	3.75 yds.
<b>Seat Dimensions</b>	23"w x 20"d x 18"h	<b>Cubic Feet</b>	27
<b>Top of Arm to Floor</b>	25"	<b>Shipping Weight</b>	110 lbs.
<b>Seat to Top of Back</b>	13"	<b>Weight Rating</b>	300 lbs.
<b>Exposed Metal</b>	Luster Grey		



**Lounge chair upholstered arms 471BHU-1-MT**  
Multiple textiles

<b>Overall Dimensions</b>	28"w x 25.75"d x 31"h	<b>COM 54" - Seat</b>	1.5 yds.
<b>Seat Dimensions</b>	23"w x 20"d x 18"h	<b>COM 54" - Back</b>	1.75 yds.
<b>Top of Arm to Floor</b>	25"	<b>COM 54" - Arms</b>	2.5 yds.
<b>Seat to Top of Back</b>	13"	<b>Cubic Feet</b>	27
<b>Exposed Metal</b>	Luster Grey	<b>Shipping Weight</b>	110 lbs.
		<b>Weight Rating</b>	300 lbs.



**Loveseat upholstered arms 471BHU-2**  
Single textiles

<b>Overall Dimensions</b>	51"w x 25.75"d x 31"h	<b>COM 54"</b>	5.25 yds.
<b>Seat Dimensions</b>	46"w x 20"d x 18"h	<b>Cubic Feet</b>	40
<b>Top of Arm to Floor</b>	25"	<b>Shipping Weight</b>	200 lbs.
<b>Seat to Top of Back</b>	13"	<b>Weight Rating</b>	300 lbs. (per seat)
<b>Exposed Metal</b>	Luster Grey		



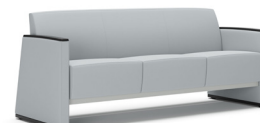
**Loveseat upholstered arms 471BHU-2-MT**  
Multiple textiles

<b>Overall Dimensions</b>	51"w x 25.75"d x 31"h	<b>COM 54" - Seat</b>	2 yds.
<b>Seat Dimensions</b>	46"w x 20"d x 18"h	<b>COM 54" - Back</b>	2.75 yds.
<b>Top of Arm to Floor</b>	25"	<b>COM 54" - Arms</b>	2.5 yds.
<b>Seat to Top of Back</b>	13"	<b>Cubic Feet</b>	40
<b>Exposed Metal</b>	Luster Grey	<b>Shipping Weight</b>	200 lbs.
		<b>Weight Rating</b>	300 lbs. (per seat)



**Sofa upholstered arms 471BHU-3**  
Single textiles

<b>Overall Dimensions</b>	74"w x 25.75"d x 31"h	<b>COM 54"</b>	7 yds.
<b>Seat Dimensions</b>	69"w x 20"d x 18"h	<b>Cubic Feet</b>	77
<b>Top of Arm to Floor</b>	25"	<b>Shipping Weight</b>	290 lbs.
<b>Seat to Top of Back</b>	13"	<b>Weight Rating</b>	300 lbs. (per seat)
<b>Exposed Metal</b>	Luster Grey		



**Sofa upholstered arms 471BHU-3-MT**  
Multiple textiles

<b>Overall Dimensions</b>	74"w x 25.75"d x 31"h	<b>COM 54" - Seat</b>	3.25 yds.
<b>Seat Dimensions</b>	69"w x 20"d x 18"h	<b>COM 54" - Back</b>	3 yds.
<b>Top of Arm to Floor</b>	25"	<b>COM 54" - Arms</b>	2.5 yds.
<b>Seat to Top of Back</b>	13"	<b>Cubic Feet</b>	77
<b>Exposed Metal</b>	Luster Grey	<b>Shipping Weight</b>	290 lbs.
		<b>Weight Rating</b>	300 lbs. (per seat)



Standard Features	Options Available
<ul style="list-style-type: none"> <li>Upholstered seat, back, and arms</li> <li>Clean-thru design</li> <li>Tight cushion</li> <li>Wall-saver design</li> <li>Luster Grey powder coat on all exposed metal</li> <li>Black poly arm caps</li> <li>Polyurethane coated steel foot rest</li> <li>Weighted units</li> <li>Tamper-resistant tooling</li> <li>Non-marring adjustable glides</li> </ul>	<b>Arm caps</b> <ul style="list-style-type: none"> <li>Poly (Black, Taupe, and Grey)</li> <li>Wood (Standard finish offering)</li> <li>Solid surface (Cameo White, Modern White, Medea, and Polaris)</li> </ul>
	<b>Exposed metal beneath the seat</b> <ul style="list-style-type: none"> <li>Powder-coated (standard or super matte powder coats)</li> </ul>
	<b>Foot rest</b> <ul style="list-style-type: none"> <li>Poly (Black, Taupe, and Grey)</li> </ul>

**Lounge chair 3DL arms 471BHT-1**

Single textiles

<b>Overall Dimensions</b>	28"w x 25.75"d x 31"h	<b>COM 54"</b>	2 yds.
<b>Seat Dimensions</b>	23"w x 20"d x 18"h	<b>Cubic Feet</b>	27
<b>Top of Arm to Floor</b>	25"	<b>Shipping Weight</b>	130 lbs.
<b>Seat to Top of Back</b>	13"	<b>Weight Rating</b>	300 lbs.
<b>Exposed Metal</b>	Luster Grey		



**Lounge chair 3DL arms 471BHT-1-MT**

Multiple textiles

<b>Overall Dimensions</b>	28"w x 25.75"d x 31"h	<b>COM 54"- Seat</b>	1.5 yds.
<b>Seat Dimensions</b>	23"w x 20"d x 18"h	<b>COM 54"- Back</b>	1.75 yds.
<b>Top of Arm to Floor</b>	25"	<b>Cubic Feet</b>	27
<b>Seat to Top of Back</b>	13"	<b>Shipping Weight</b>	130 lbs.
<b>Exposed Metal</b>	Luster Grey	<b>Weight Rating</b>	300 lbs.



**Loveseat 3DL arms 471BHT-2**

Single textiles

<b>Overall Dimensions</b>	51"w x 25.75"d x 31"h	<b>COM 54"</b>	3.75 yds.
<b>Seat Dimensions</b>	46"w x 20"d x 18"h	<b>Cubic Feet</b>	40
<b>Top of Arm to Floor</b>	25"	<b>Shipping Weight</b>	220 lbs.
<b>Seat to Top of Back</b>	13"	<b>Weight Rating</b>	300 lbs. (per seat)
<b>Exposed Metal</b>	Luster Grey		



**Loveseat 3DL arms 471BHT-2-MT**

Multiple textiles

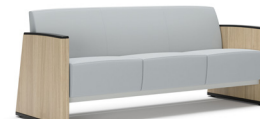
<b>Overall Dimensions</b>	51"w x 25.75"d x 31"h	<b>COM 54"- Seat</b>	2 yds.
<b>Seat Dimensions</b>	46"w x 20"d x 18"h	<b>COM 54"- Back</b>	2.75 yds.
<b>Top of Arm to Floor</b>	25"	<b>Cubic Feet</b>	40
<b>Seat to Top of Back</b>	13"	<b>Shipping Weight</b>	220 lbs.
<b>Exposed Metal</b>	Luster Grey	<b>Weight Rating</b>	300 lbs. (per seat)



**Sofa 3DL arms 471BHT-3**

Single textiles

<b>Overall Dimensions</b>	74"w x 25.75"d x 31"h	<b>COM 54"</b>	5.5 yds.
<b>Seat Dimensions</b>	69"w x 20"d x 18"h	<b>Cubic Feet</b>	77
<b>Top of Arm to Floor</b>	25"	<b>Shipping Weight</b>	310 lbs.
<b>Seat to Top of Back</b>	13"	<b>Weight Rating</b>	300 lbs. (per seat)
<b>Exposed Metal</b>	Luster Grey		



**Sofa 3DL arms 471BHT-3-MT**

Multiple textiles

<b>Overall Dimensions</b>	74"w x 25.75"d x 31"h	<b>COM 54"- Seat</b>	3.25 yds.
<b>Seat Dimensions</b>	69"w x 20"d x 18"h	<b>COM 54"- Back</b>	3 yds.
<b>Top of Arm to Floor</b>	25"	<b>Cubic Feet</b>	77
<b>Seat to Top of Back</b>	13"	<b>Shipping Weight</b>	310 lbs.
<b>Exposed Metal</b>	Luster Grey	<b>Weight Rating</b>	300 lbs. (per seat)



Standard Features	Options Available
<ul style="list-style-type: none"> <li>Upholstered seat and back with 3DL arms</li> <li>Clean-thru design</li> <li>Tight cushion</li> <li>Wall-saver design</li> <li>Luster Grey powder coat on all exposed metal</li> <li>Black poly arm caps</li> <li>Polyurethane coated steel foot rest</li> <li>Weighted units</li> <li>Tamper-resistant tooling</li> <li>Non-marring adjustable glides</li> </ul>	<b>Arm caps</b> <ul style="list-style-type: none"> <li>Poly (Black, Taupe, and Grey)</li> <li>Wood (Standard finish offering)</li> <li>Solid surface (Cameo White, Modern White, Medea, and Polaris)</li> </ul>
	<b>Exposed metal beneath the seat</b> <ul style="list-style-type: none"> <li>Powder-coated (standard or super matte powder coats)</li> </ul>
	<b>Foot rest</b> <ul style="list-style-type: none"> <li>Poly (Black, Taupe, and Grey)</li> </ul>

## Standard Textile & Finish Selection

---

<http://carolina.ofs.com/resources/textiles>  
<http://carolina.ofs.com/resources/finishes>

## Frame Construction

---

Seat	<ul style="list-style-type: none"> <li>4.5" thick plywood seat box assembly with webbed cutout in top face panel</li> </ul>
Back	<ul style="list-style-type: none"> <li>7/8" thick plywood assembly, webbed with 1" thick face foam</li> </ul>
Arms	<ul style="list-style-type: none"> <li>1.125" thick MDF assembled together and secured via (9) 5/16" diameter wood dowels and metal mending plates on the top and bottom surfaces.</li> <li>Arm caps are attached via (3) metal compression dowels inserted into a metal top mending plate</li> </ul>
Metal Frame	<ul style="list-style-type: none"> <li>1" x 1" 16 gauge C1018 steel posts</li> <li>1 1/2" w x .188" thick 7 gauge C1018 mid rails</li> <li>1 1/2"w x .750" thick 11 gauge C1018 cross rails</li> </ul>
Assembly	<ul style="list-style-type: none"> <li>All welded joints are full penetration mig/tig welds</li> <li>All bolted connections are 1/4-20 grade 5 hardware</li> <li>Adjustable Glides: 1/4-20</li> </ul>

## Foam

---

Seat/Back/Arms	<ul style="list-style-type: none"> <li>All foam is premium grade CAL 117 certified fire retardant</li> </ul>
----------------	--

## Suspension

---

Back	<ul style="list-style-type: none"> <li>Lexus webbing (Polypropylene/latex/rubber) covering the cutout and openins in the seat and back assemblies</li> <li>2430 Propex applied to the back face and the back assembly</li> <li>All applied with 5/16 stainless steel staples</li> </ul>
------	---