

Statement of line



Mid back w/ small seat task
7106 upholstered (shown)
7106K knit
7106M mesh
 28.25" w x 28.25" d x 37.25"-42.25" h



Mid back task chair
7107 upholstered (shown)
7107K knit
7107M mesh
 28.5" w x 28.5" d x 37.25"-42.25" h



High back task chair
7110 upholstered (shown)
7110K knit
7110M mesh
 28.5" w x 28.5" d x 43.25"-48.25" h

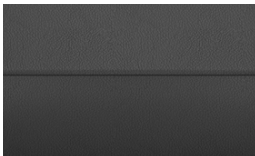


Guest chair w/ arms
7109 upholstered (shown)
7109K knit w/arms
7109M mesh w/arms
 24.5" w x 23.75" d x 36.5" h



Guest chair armless
7112 upholstered (shown)
7112K knit w/arms
7112M mesh w/arms
 20.5" w x 23.75" d x 36.5" h

Features and options



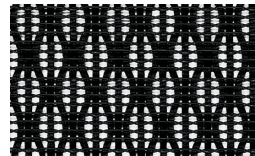
Upholstered
 Stitch detail on back



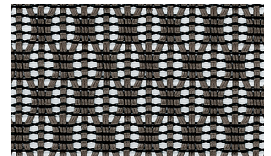
Knits
 Black - 3BK



Charcoal - 3CC



Mesh
 Black - MBK



Charcoal - MHC



Arm
 Polished aluminum loop arm w/ urethane cap - CR21
 Available on task models



Fixed loop arms - CR22
 Available on task and guest models



Polished aluminum loop arm w/ insert pad - CR23
 Available on task and guest models



Fixed t arms - CR16
 Available on task models



Height adjustable arms - CR11
 Available on task models



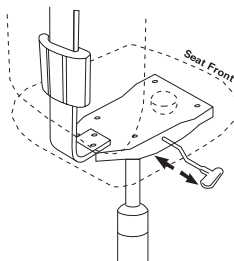
Height & width adjustable arms - CR12
 Available on task models



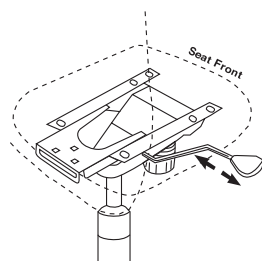
Height adjustable arms black/chrome - CR17
 Available on task models



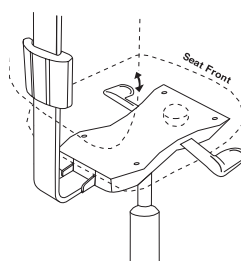
Height & width adjustable arms black/chrome - CR18
 Available on task models



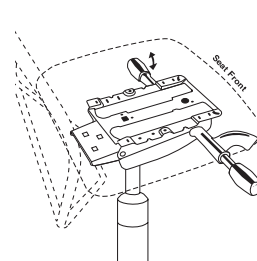
Control
 Swivel tilt - SWT2



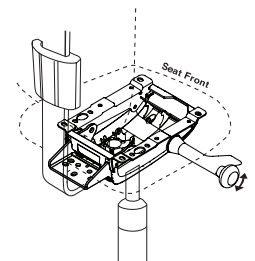
Knee tilt - KNT2



Basic synchro tilt - BST1
 Seat slider option - SS3



Advanced synchro tilt w/ side tension knob - ASA7
 Seat slider option - SS3



Body balance - BDB3
 Seat slider option - SS3