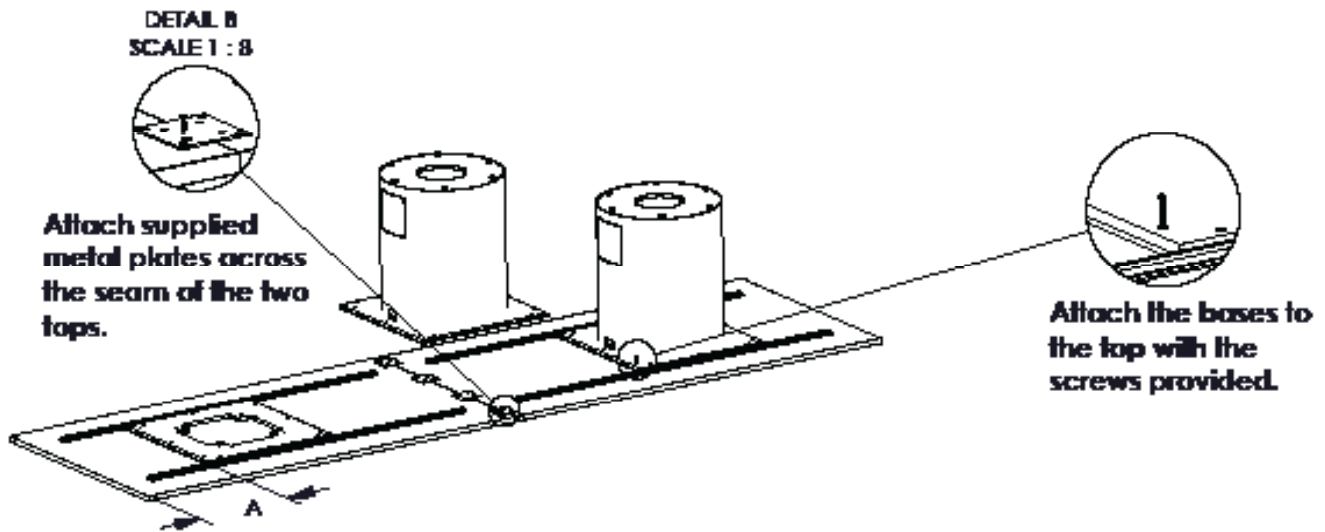


Intermix Conference Assembly



Intermix Conference top & base assembly

For all (2) piece tops, Dimension "A" would be 20". On tops that require (3) bases, center the middle base directly over the seam between the table sections. In the case of the 48192 tops, it will at times require (4) bases. Maintain the 20" on the ends, and then space the remaining (2) bases out evenly. Center all bases on the 48" width of the tops.

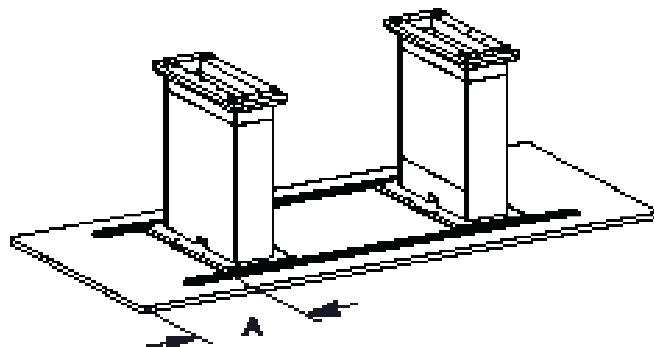


1 PIECE TOPS

7236 Dimension A = 12"

8442 Dimension A = 16"

9642 Dimension A = 20"

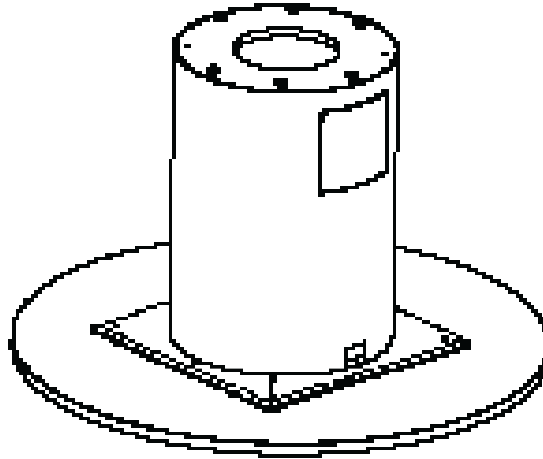


Intermix round base assembly

Center the base over the top. Attach the base to the top with screws included. The cylinder base weight requirements listed below, must be followed in order to pass "BIFMA" testing standards and prevent possible injury to the user.

Clear 6MIL bags are supplied with each base. The use of dry sand is recommended. (Moisture in the sand could cause damage to the bases).

Fill and tie off sandbags and insert them into the bottom of the bases. Make sure that they are distributed evenly through out the base.

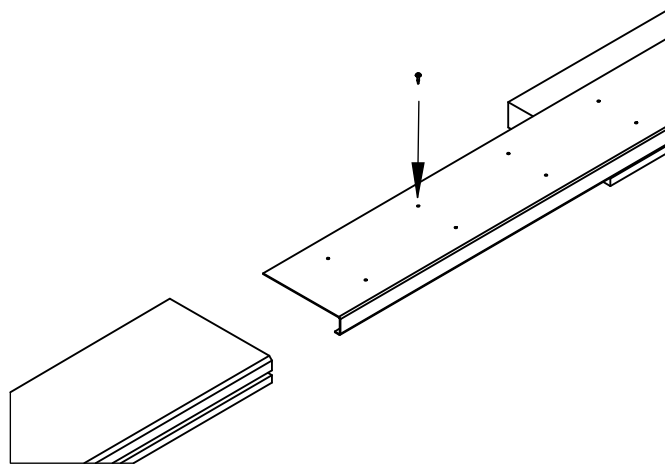


Required weights for cylinder bases under round and square tops			
Base	Max weight required	Fill each bag to	Bag qty
CB-F, CC-M/W18CB	85 lbs.	21.25 lbs.	4
CBH-F, CC-M/W20CB	130 lbs.	18.6 lbs.	7
CBU-F, CC-M/W24CB	160 lbs.	20 lbs.	8
CB-M	160 lbs.	20 lbs.	8
CBU-M	140 lbs.	20 lbs.	7
CB-R	120 lbs.	20 lbs.	6
CBU-R	100 lbs.	20 lbs.	5

Intermix beam table assembly

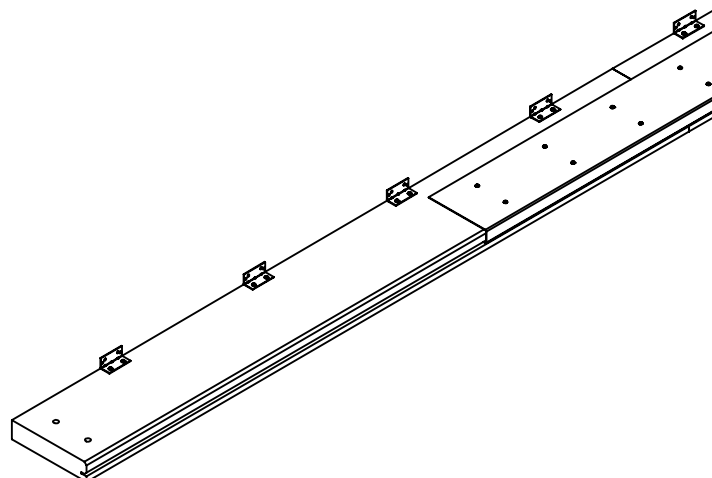
Place Beams with beveled back side facing up on soft surface (to prevent scratching.) Beams should be end to end, bored ends to the outside, with no gap between the beams.

Align grooves on the beams and slide the J-channel until it is centered on the two beams. Screw J-channel to beams using twelve (12) #8 x 5/8" pan head screws on each J-channel.



Position first L-brackets on top edge of beam approximately 12" from each end of beams. Space remaining L-brackets evenly along top of beam 12-19" apart.

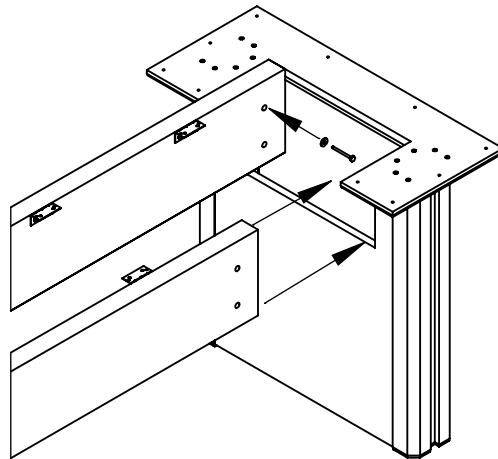
Attach to beam using two (2) #8 x 5/8" pan head screws per bracket.



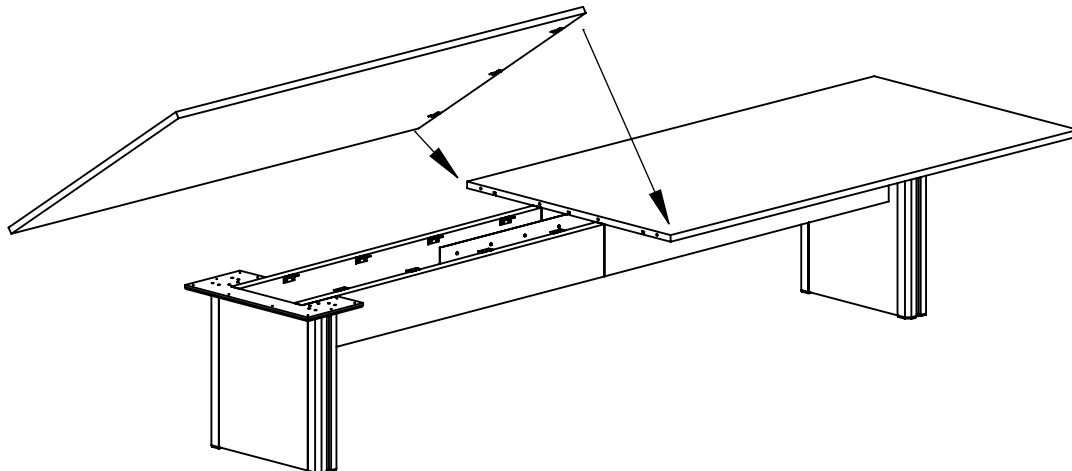
Intermix beam table assembly

Place bases in desired location. Power/Data outlet location should be considered if power supplies are used. Place beams inside of opening so there is no gap between the beam and the mending plate on the base. The J-channel edge of the beam should be towards the floor.

Using a 3/16" drill bit, pre-drill holes for the lag bolts through the beam into the base. Drive lag bolts through the beams into the base and tighten securely. Level the base beam assembly at this time. Level should be placed only on the mending plates while leveling since a "crown" is built into the beams.



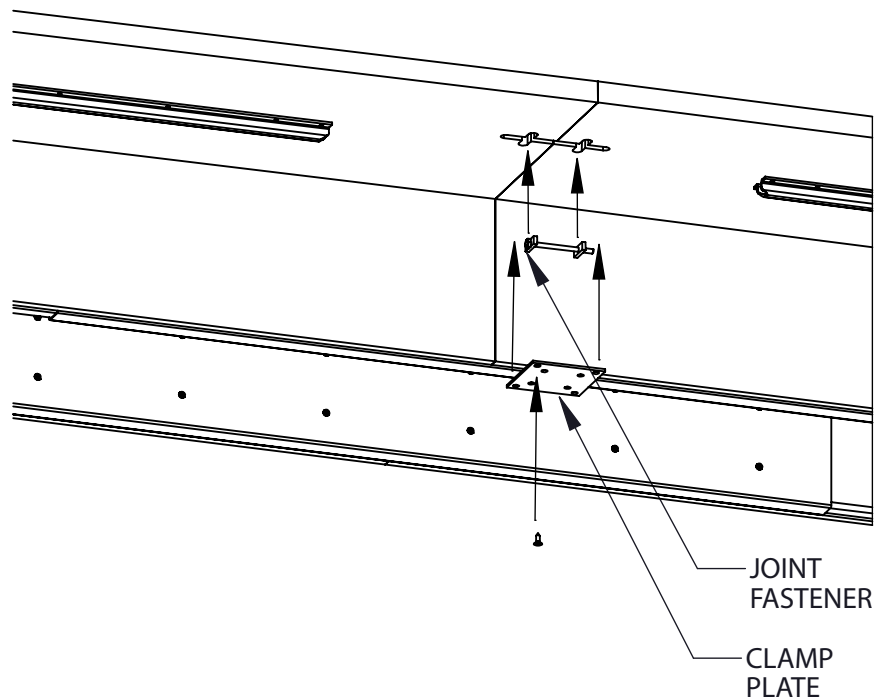
Place top sections on base/beam assembly as shown. Align dowels with matching holes and pull tops tightly together.



Intermix beam table assembly

Insert three (3) joint fasteners into routed sections on bottom side of worksurface. Tighten joint fasteners with open end wrench.

Position two (2) clamp plates over outer joint fasteners and screw to worksurface using eight (8) #8 x 5/8" flat head screws.



Intermix beam table assembly

Position worksurface so the chalk marks on the bottom side of the worksurface are aligned with mending plates.

Secure worksurface to base/beam assembly using ten (10) #8 x 1 1/2" flat head screws per base and two (2) #8 x 5/8" pan head screws for each Lbracket.

