

Tangent assembly

---





## Table of contents

With buttons	3-4
Without buttons	5-6

## Attaching walls with buttons

1. Determine the set up, refer to drawings for layout. (**Figure A**)
2. Install buttons as required. Additional buttons are bagged and stapled to inside of wall unit. (**Figure B**)
3. Remove seat lids and install ganging brackets. **Note:** If cushion tie down option was specified with optional back cushion, mount D-ring 1495165 to line up with snap hook on cushion with ganging clip/screw. D-rings are packaged with cushions. (**Figure C**)

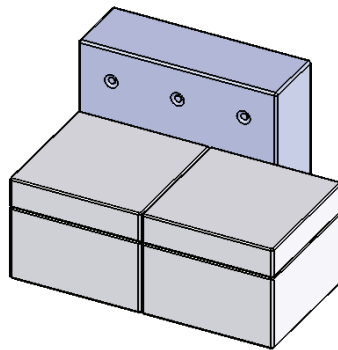


Figure A

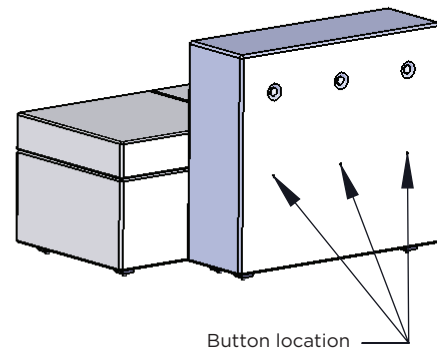


Figure B

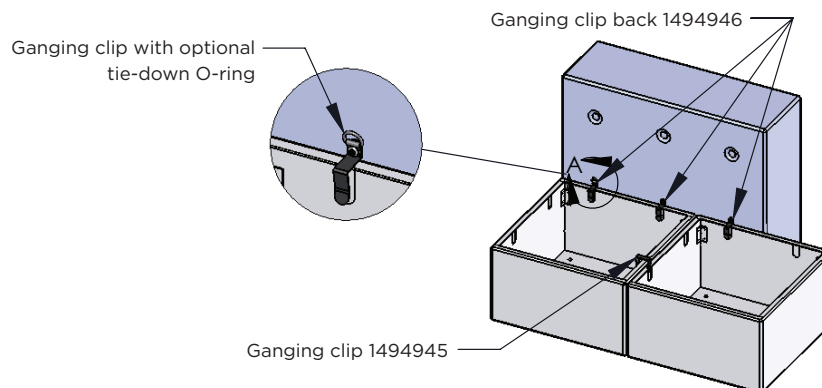


Figure C

## Attaching walls with buttons

4. Lay unit on it's back and install clamp plate kits CP-1. Required for layouts with benches on one side of walls, not required when layout includes benches on both sides of walls. Clamp plate kit is purchased separately. The back panel has four insert nuts. Align them with the clearance holes on the seat frame. **(Figure D)**
5. From outside wall structure, push button through fabric, foam and wall structure. From inside wall structure, push spring washer over button prong until button and spring washer are tight against wall structure. **(Figure E)**
6. Set unit upright and re-install seat lids.

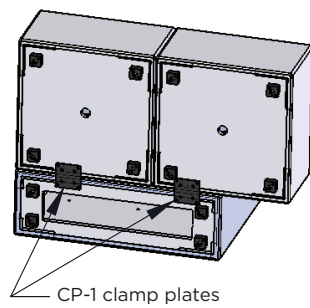


Figure D

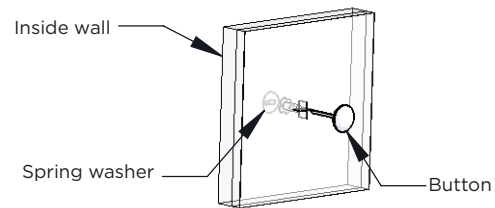


Figure E

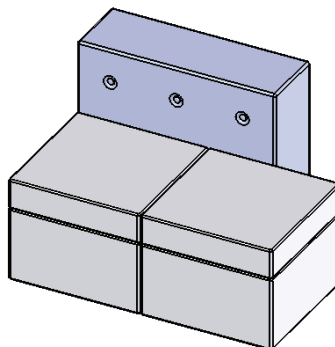


Figure F

## Attaching walls without buttons

1. Determine the set up, refer to drawings for layout. (**Figure A**)
2. Remove the seat lids and determine the mounting holes required for the setup. Turn wall on its side to expose the bottom of the unit. Located mounting holes by pushing ice pick or similar sharp object through the required holes on inside of unit. Cut small cross through the face of the fabric and foam. (**Figure B**)
3. Install ganging brackets. **Note:** If cushion tie down option was specified with optional back cushion, mount D-ring 1495165 to line up with snap hook on cushion with ganging clip/screw. D-rings are packaged with cushions. (**Figure C**)

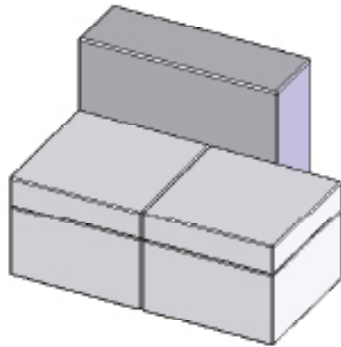


Figure A

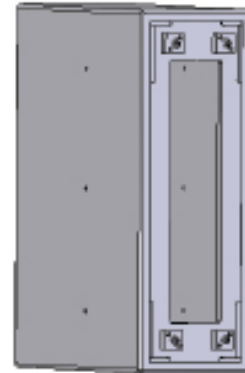


Figure B

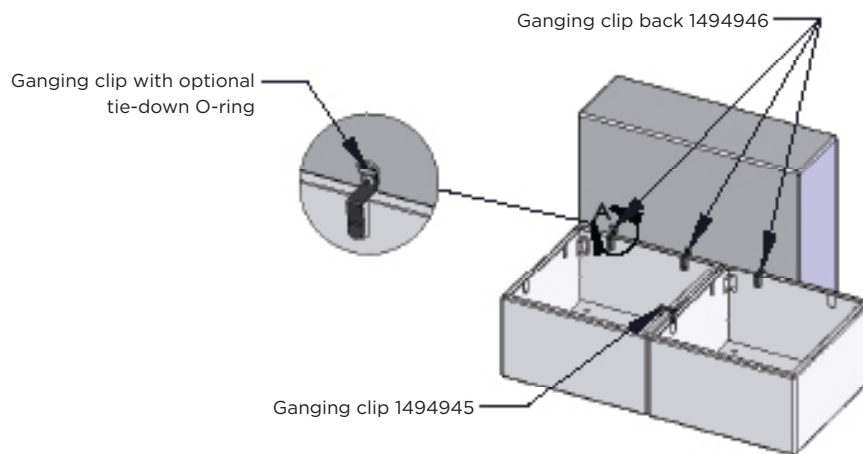


Figure C

## Attaching walls without buttons

4. Lay unit on it's back and install clamp plate kits CP-1. Required for layouts with benches on one side of walls, not required when layout includes benches on both sides of walls. Clamp plate kit is purchased separately. The back panel has four insert nuts. Align them with the clearance holes on the seat frame. **(Figure D)**
5. Set unit upright and re-install seat lids. **(Figure E)**

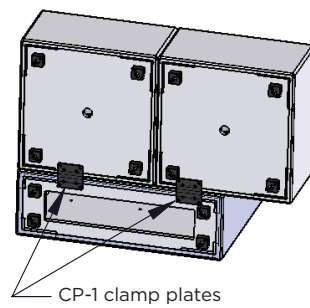


Figure D

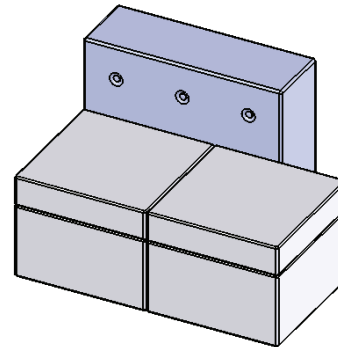


Figure E