

LeanTo assembly instructions



Important safety instructions

When using an electrical furnishing, basic precautions should always be followed, including the following:

This furnishing is made for commercial use only.

Read all instructions before using this furnishing:

DANGER

To reduce the risk of electrical shock:

1. Always unplug this furnishing from the electrical outlet before cleaning.

WARNING

To reduce the risk of burns, fire, electric shock, or injury to persons:

1. Unplug from outlet before putting on or taking off parts.
2. Close supervision is necessary when this furnishing is used by, or near children, invalids, or disabled persons.
3. Use the furnishing only for its intended use as described in these instructions.
Do not use attachments not recommended by the manufacturer.
4. Never operate this furnishing if it has a damaged cord or plug, if it is not working properly, if it has been dropped or damaged, or dropped in water. Return the furnishing to a service center for examination and repair.
5. Keep the cord away from heated surfaces.
6. Do not use outdoors.
7. Use only SJT 18 AWG cord.
8. Risk of injury. Maximum load 75 pounds.

To reduce the risk of electric shock, this furnishing has a polarized plug (one blade is wider than the other). This plug will fit in a polarized outlet only one way. If the plug does not fit fully in the outlet, reverse the plug. If it still does not fit, contact a qualified electrician to install the proper outlet. Do not change the plug in any way.

Note – servicing is only to be performed by an authorized representative.

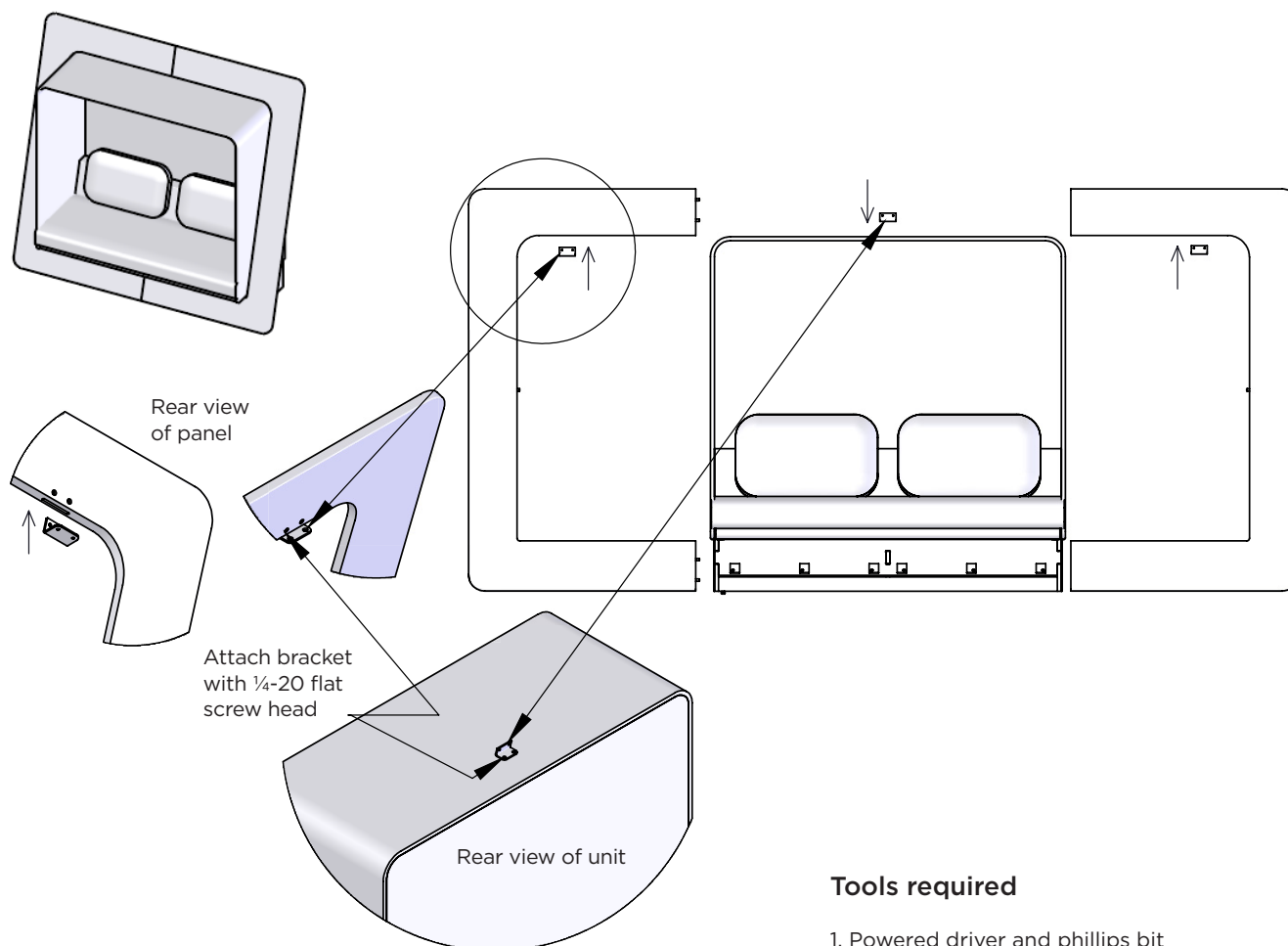
Servicing of double-insulated products

In a double-insulated product, two systems of insulation are provided instead of grounding. No grounding means is provided on a double-insulated product, nor is a means for grounding to be added to the product. Servicing a double-insulated product requires extreme care and knowledge of the system, and is to be done only by qualified service personnel. Replacement parts for a double-insulated product must be identical to the parts they replace. A double-insulated product is marked with the words “DOUBLE INSULATION” OR “DOUBLE INSULATED”. The symbol (square within a square) is also able to be marked on the product.

Save these instructions

Shroud Installation

1. Install bracket on top/center of surround.
2. Install 1 bracket in each shroud panel, radius portion of bracket toward the back of unit.
3. Lay unit on back, propping the top up enough to allow access to install the upper bracket screws.
4. Slide first panel onto unit over center bracket.
5. Slide second panel into position, making sure dowels are aligned.
6. Use ratchet straps as listed in note to close gaps in panel joint.
7. Install screws to secure the shroud, from top of unit and under unit through the base.

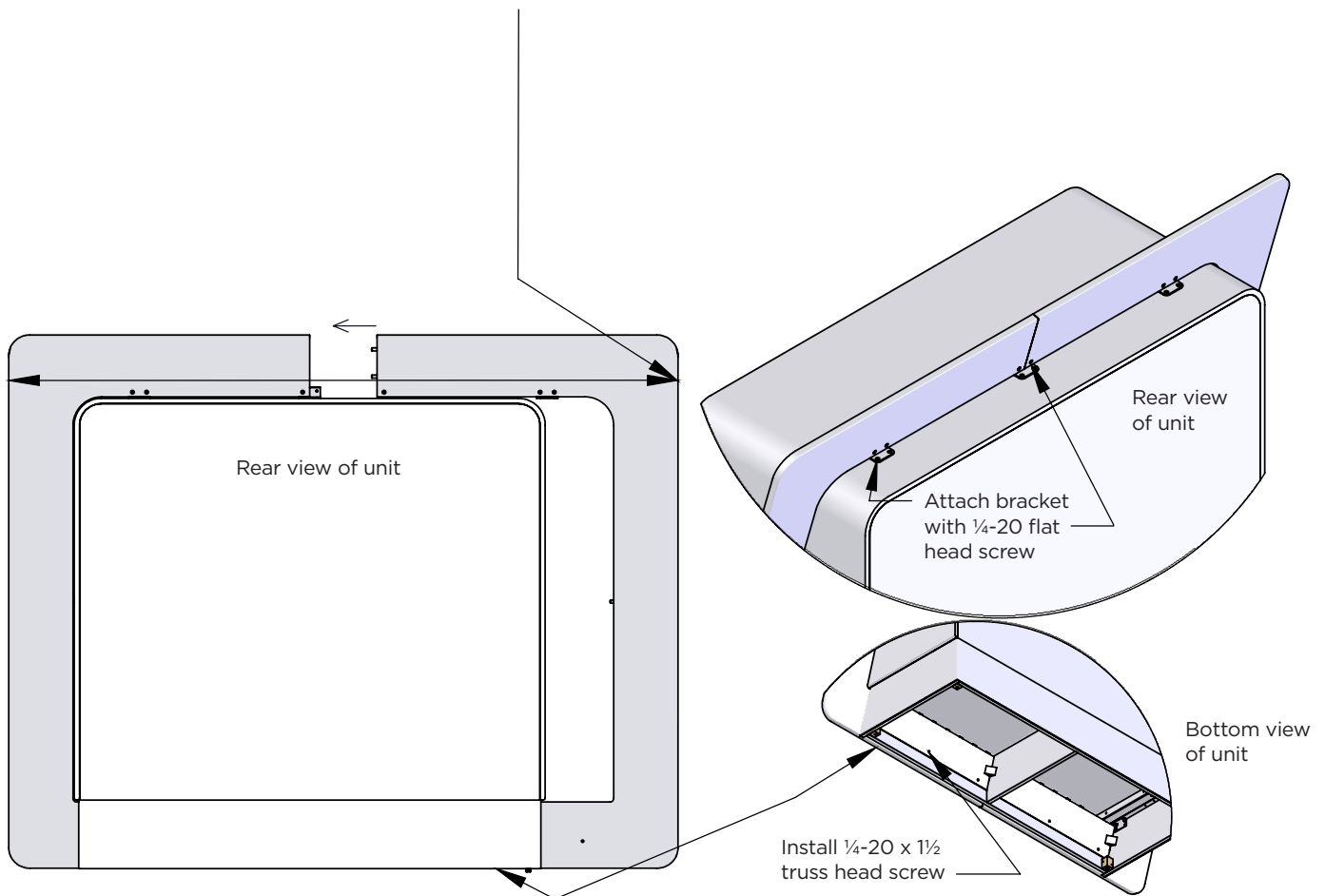


Tools required

1. Powered driver and phillips bit
2. 5/32 Allen wrench (preferably with a rounded end-this would make it easier to get the top bolts started)
3. 2 Sets of 20 FT ratchet straps
4. Protective cover material for panel protection (thick fabric, felt or foam)

Shroud Installation (Continued)

1. Use ratchet straps horizontally around top and bottom of the shroud panels to close them together before screw installation make sure all dowels align. to avoid damage make sure all edges and faces are covered with a protective material.

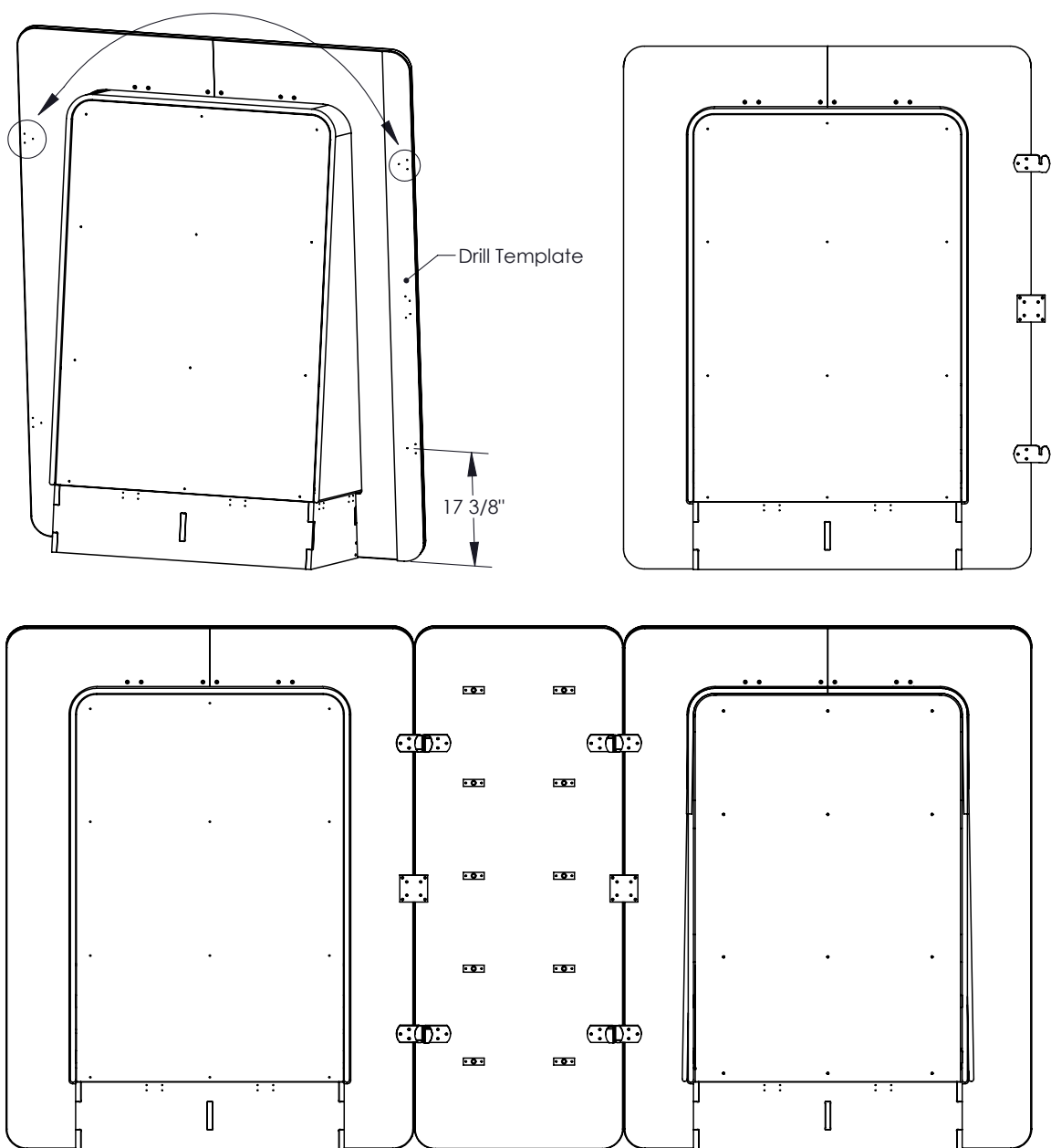


Tools required

1. Powered driver and phillips bit
2. 5/32 Allen wrench (preferably with a rounded end-this would make it easier to get the top bolts started)
3. 2 Sets of 20 FT ratchet straps
4. Protective cover material for panel protection (thick fabric, felt or foam)

Inline Installation

1. Begin by placing the drill template onto the back of the shroud on the LeanTo Lounge unit making sure that the bottom hole pattern is spaced $17 \frac{3}{8}$ " from the bottom of the shroud as shown above. Clamp the template in place making sure all the edges are flush with each other. Using a $\frac{1}{8}$ " drill bit, bore the 10 holes located on the drill template to an approximate depth of $\frac{1}{4}$ ". Next, flip the template over and repeat for the opposing unit.
2. Attach the ganging brackets and clamp plate to the Lounge units making sure the "hook" portion is facing upward. Next, position the LeanTo units together into their final resting position. Lastly, lift upwards on the center In Line unit, and then slowly drop back down to allow the ganging brackets to interlock with each other.



End Shelf Installation

1. Begin by pulling the (4) lower shelves from the mounting pins as shown above. This will reveal the mounting holes in the back panel that are necessary to attach the End Shelf unit to the Lounge unit.
2. Place the End Shelf unit against the Lounge unit making sure the edge of the back panel is tight against the shroud of the Lounge unit. Adjust the position of the back panel such that the bottom edge is flush with the bottom edge of the Lounge unit. Next, fasten the (8) #8 x 1-1/2" screws through the back panel and into the side of the Lounge unit. Lastly, reinstall the (4) shelves from step 1.
3. Install the L-bracket on the back side of the shelf unit using the (4) #10 x 5/8" screws. This can help close up any gap that may be visible between the End Shelf and Lounge unit.

