

Tobee assembly





Table of Contents

Important safety instructions	3
Occasional and cafe/dining table	4
Pull-up table	5
In surface power	6
Accessory hook	7

Important safety instructions

When using an electrical furnishing, basic precautions should always be followed, including the following:

This furnishing is made for commercial use only.

Read all instructions before using this furnishing:

DANGER

To reduce the risk of electrical shock:

1. Always unplug this furnishing from the electrical outlet before cleaning.

WARNING

To reduce the risk of burns, fire, electric shock, or injury to persons:

1. Unplug from outlet before putting on or taking off parts.
2. Close supervision is necessary when this furnishing is used by, or near children, invalids, or disabled persons.
3. Use the furnishing only for its intended use as described in these instructions.
Do not use attachments not recommended by the manufacturer.
4. Never operate this furnishing if it has a damaged cord or plug, if it is not working properly, if it has been dropped or damaged, or dropped in water. Return the furnishing to a service center for examination and repair.
5. Keep the cord away from heated surfaces.
6. Do not use outdoors.
7. Use only SJT 18 AWG cord.
8. Risk of injury. Maximum load 75 pounds.

To reduce the risk of electric shock, this furnishing has a polarized plug (one blade is wider than the other). This plug will fit in a polarized outlet only one way. If the plug does not fit fully in the outlet, reverse the plug. If it still does not fit, contact a qualified electrician to install the proper outlet. Do not change the plug in any way.

Note – servicing is only to be performed by an authorized representative.

Servicing of double-insulated products

In a double-insulated product, two systems of insulation are provided instead of grounding. No grounding means is provided on a double-insulated product, nor is a means for grounding to be added to the product. Servicing a double-insulated product requires extreme care and knowledge of the system, and is to be done only by qualified service personnel. Replacement parts for a double-insulated product must be identical to the parts they replace. A double-insulated product is marked with the words “DOUBLE INSULATION” OR “DOUBLE INSULATED”. The symbol (square within a square) is also able to be marked on the product.

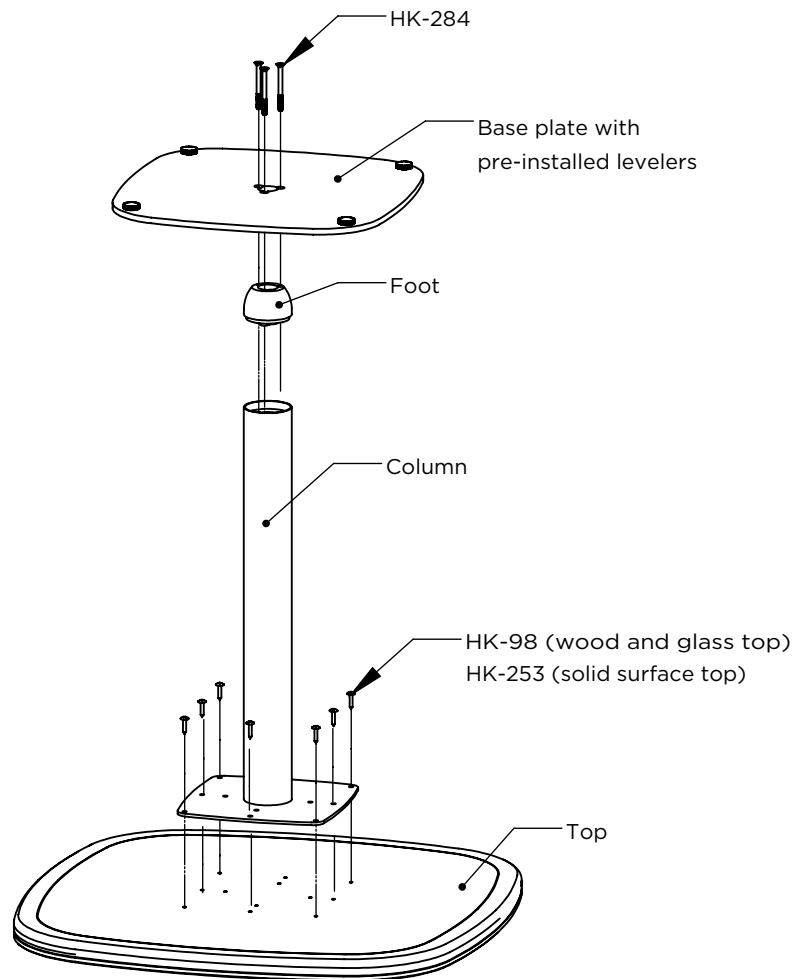
Save these instructions

Occasional and cafe/dining table

Tools required:

- Impact screwdriver
- #3 screwdriver bit (wood, glass, and solid top)
- 5/32" Allen screwdriver bit

1. With top positioned face side down, install base column using provided HK-98 (wood and glass tops) or HK-253 (solid surface tops).
2. Install foot to column. **Tip:** After aligning foot holes to column holes apply a piece of painter's tape around the foot and column to prevent it from rotating during base plate installation.
3. Align holes on base plate and foot, attached with provided HK-284. **Note:** For two column tables, the mouse holes on each column must face inward (face each other) for proper base plate alignment.

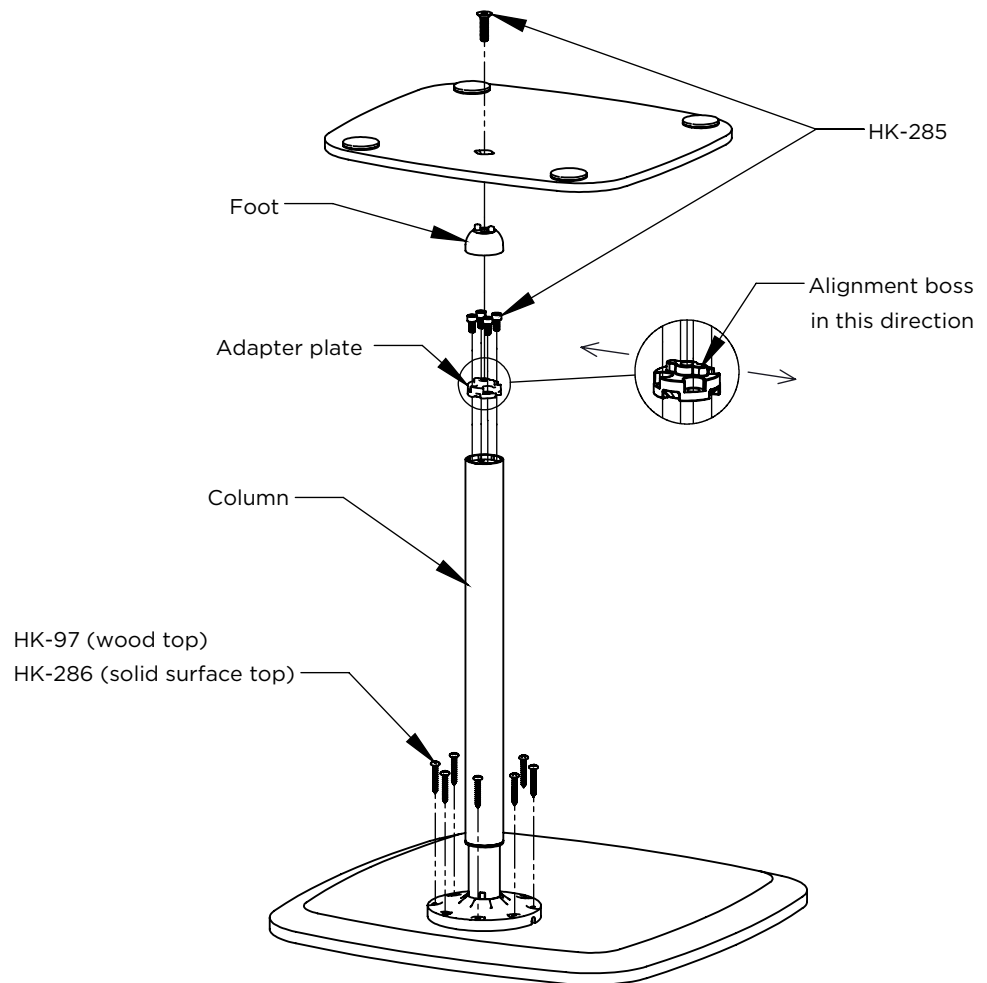


Pull-up table

Tools required:

- Impact screwdriver
- #2 Screwdriver bit (wood top)
- #3 Screwdriver bit (solid surface top)
- 5 mm Allen screwdriver bit

1. With top positioned face side down, install base column using provided HK-97 (wood tops) or HK-286 (solid surface tops).
2. Install adapter plate to column using quantity 4 - M6 x 12mm screws from HK-285. Orient adapter plate as shown.
3. Install foot and base plate as shown. Fasten in place with quantity 1 - M8 x 30mm screw from HK-285.

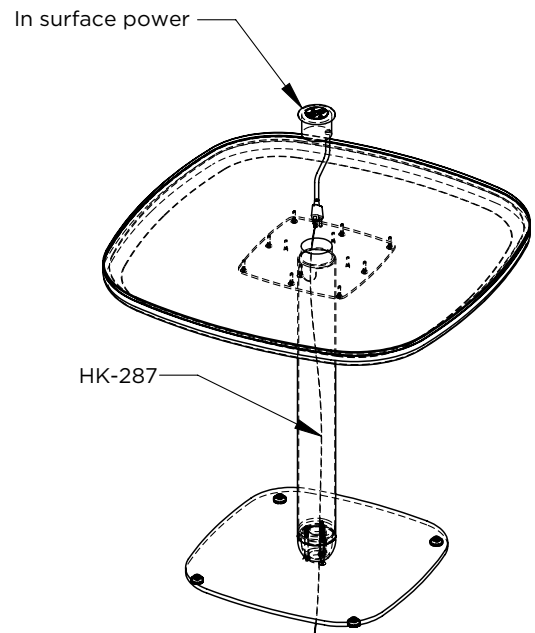
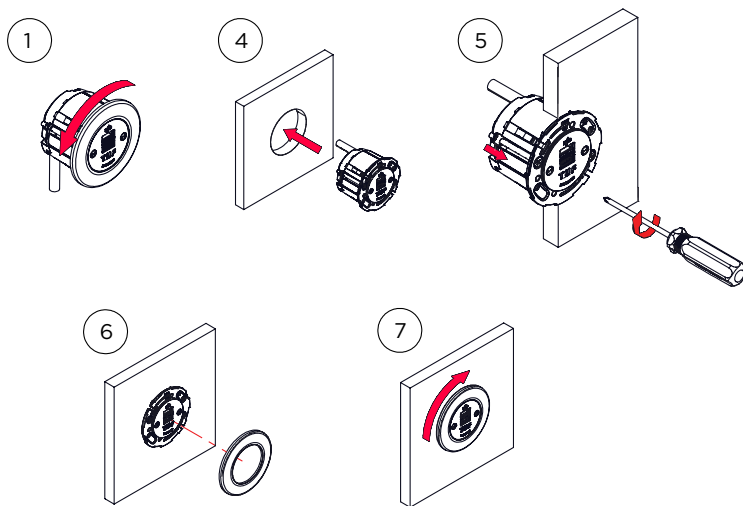


In surface power

Tools required:

- #2 Screwdriver

1. Remove bezel from power supply by turning it counter-clockwise.
2. Tie one end of HK-287 to a prong on the power supply plug.
3. Feed the other end of HK-287 through the top, column and base plate. **Tip:** Feeding HK-287 can be done during table assembly.
4. Pull power supply cord through table assembly. Fully seat power supply into top and orient.
5. Turn screw clamps to required depth.
6. Align bezel to power supply, ensuring bezel is flush with face of top.
7. Turn bezel clockwise until it clicks in place.

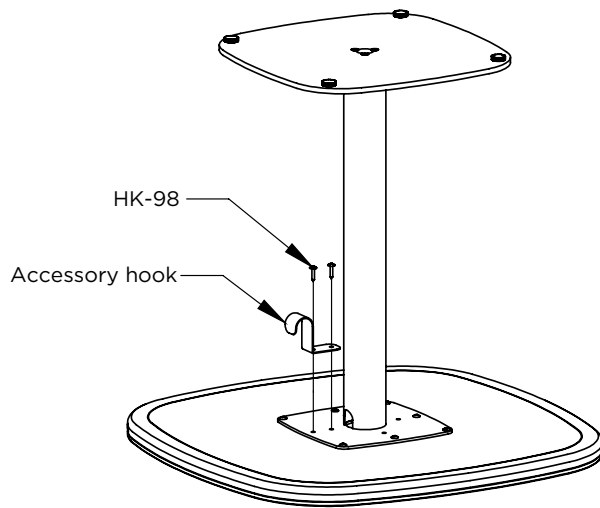


Accessory hook

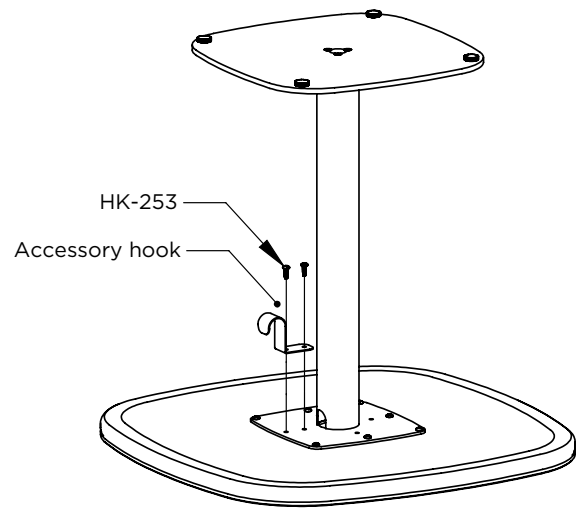
Tools required:

- Impact screwdriver
- #3 Screwdriver bit

1. Accessory hook is installed onto column base plate in desired location as shown using the provided hardware kit.
2. HK-98 are for use with TFL, HPL, veneer, and glass tops. Accessory hook can be installed anywhere under these tops.
3. HK-253 are for use with solid surface tops. Accessory hook must be installed in pre-drilled holes.



TFL, HPL, veneer and glass tops



Solid surface tops