

Aptos building blocks - conference tops





Table of contents

Veneer tops	3-4
Glass overlay tops	5-6
Solid surface, no overlay tops	7-8
Solid surface, with overlay tops	9-10
Table supports	11
Power supplies	12
Lighting	13
Work accessories	14
Wire management	15

Veneer

General

- 1.1875" thick veneer surface
- 2" flat knife profile around perimeter
- **Note:** Clamp on accessories will not work on 2" flat knife edge
- Specify bases separately
- For 30x30 and 36" dia. tops use 34-TFP trifoil base
- Tops 42" and up require two sets of 34-DFC duofoil legs

Soft square

- Sizes: 30x30, 42x42, 48x48, 54x54, 60x60
- 4" radius on corners
- For grommet or power supply cutout, specify ST model

Eased square

- Sizes: 30x30, 42x42, 48x48, 54x54, 60x60
- For grommet or power supply cutout, specify SST model

Round

- Diameters: 36", 42", 48", 54", 60"
- For grommet or power supply cutout, specify VT model

Soft square



Plan view



34-30ST on 34-TFP trifoil base



34-42ST on 34-DFC duofoil legs

Eased square



Plan view



34-30SST on 34-TFP trifoil base



34-42SST on 34-DFC duofoil legs

Round



Plan view



34-36RT on 34-TFP trifoil base



34-42RT on 34-DFC duofoil legs

Veneer, continued

General

- 1.1875" thick veneer surface
- 2" flat knife profile around perimeter
- **Note:** Clamp on accessories will not work on 2" flat knife edge
- Specify bases separately

Soft rectangle

- Widths: 72"w, 84"w, 96"w, 108"w
- Depths: 36"d or 42"d
- 72"w and 84"w tops require two sets of duofoil legs
- 96"w and 108"w tops require three sets of duofoil legs
- For grommet or power supply cutout, specify RT model

Eased rectangle

- Widths: 66"w, 72"w, 78"w, 84"w
- Depths: 36"d or 42"d
- All top sizes require two sets of duofoil legs
- For grommet or power supply cutout, specify VT model

Eased rectangle



Plan view



34-6636VT with four 34-DFC duofoil legs

Soft rectangle



Plan view



34-7236SRT with four 34-DFC duofoil legs



34-9636SRT with six 34-DFC duofoil legs

Glass Overlay

General

- 1.1875" thick veneer surface
- 2" flat knife profile around perimeter
- **Note:** Clamp on accessories will not work on 2" flat knife edge
- Specify bases separately
- For 30x30 and 36" dia. tops use use 34-TFP trifoil base
- Tops 42" and up require two sets of 34-DFC duofoil legs

Soft square

- Sizes: 30x30, 42x42, 48x48, 54x54, 60x60
- 4" radius on corners

Eased square

- Sizes: 30x30, 42x42, 48x48, 54x54, 60x60

Round

- Diameters: 36", 42", 48", 54", 60"

Soft square



Plan view



34-30STG on 34-TFP trifoil base



34-42STG on 34-DFC duofoil legs

Eased square



Plan view



34-30SSTG on 34-TFP trifoil base



34-42SSTG on 34-DFC duofoil legs

Round



Plan view



34-36RTG on 34-TFP trifoil base



34-42RTG on 34-DFC duofoil legs

Glass overlay, continued

General

- 1.1875" thick veneer subtop with 0.375" glass overlay, 1.5625" total thickness
- Veneer subtop with flat edge inset 1.5" around perimeter
- Specify bases separately

Soft rectangle

- Widths: 72"w, 84"w, 96"w, 108"w
- Depths: 36"d or 42"d
- 72"w and 84"w tops require two sets of duofoil legs
- 96"w and 108"w tops require three sets of duofoil legs

Soft rectangle



Plan view



34-7236RTG with four 34-DFC duofoil legs



34-9636RTG with six 34-DFC duofoil legs

Solid surface No overlay

General

- 1.1875" thick solid surface
- 2" flat knife profile around perimeter
- **Note:** Clamp on accessories will not work on 2" flat knife edge
- Specify bases separately
- For 30x30 and 36" dia. tops use use 34-TFP trifoil base
- Tops 42" and up require two sets of 34-DFC duofoil legs

Soft square

- Sizes: 30x30, 42x42, 48x48, 54x54, 60x60
- 4" radius on corners

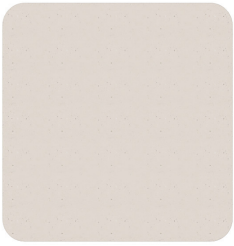
Eased square

- Sizes: 30x30, 42x42, 48x48, 54x54, 60x60

Round

- Diameters: 36", 42", 48", 54", 60"

Soft square



Plan view



34-30STCNO on 34-TFP trifoil base



34-42DTCNO on 34-DFC duofoil legs

Eased square



Plan view



34-30SSTCNO on 34-TFP trifoil base



34-42SSTCNO on 34-DFC duofoil legs

Round



Plan view



34-36RTCNO on 34-TFP trifoil base



34-42RTCNO on 34-DFC duofoil legs

Solid surface No overlay, continued

General

- 1.1875" thick solid surface
- Veneer subtop with flat edge inset 1.5" around perimeter
- Specify bases separately
- 72"w and 84"w tops require two sets of duofoil legs
- 96"w and 108"w tops require three sets of duofoil legs

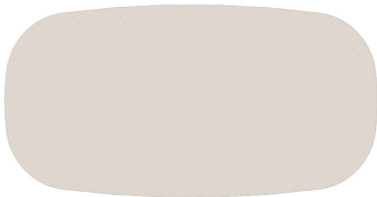
Eased rectangle

- Widths: 72"w, 84"w, 96wW, 108"w
- Depths: 36"d or 42"d
- For grommet or power supply cutout, specify VTC model

Soft rectangle

- Widths: 72"w, 84"w, 96"w, 108"w
- Depths: 36"d or 42"d

Eased rectangle



Plan view

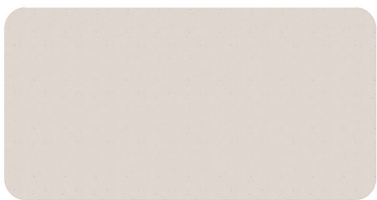


34-7236VTCNO with four 34-DFC duofoil legs



34-9636VTCNO with six 34-DFC duofoil legs

Soft rectangle



Plan view



34-7236SRTCNO with four 34-DFC duofoil legs



34-9636SRTCNO with six 34-DFC duofoil legs

Solid surface With overlay

General

- 1.1875" thick veneer subtop with 0.5" solid surface overlay, 1.6875" total thickness
- Specify bases separately
- For 30x30 and 36" dia. tops use use 34-TFP trifoil base
- Tops 42" and up require two sets of 34-DFC duofoil legs

Soft square

- Sizes: 30x30, 42x42, 48x48, 54x54, 60x60
- 4" radius on corners

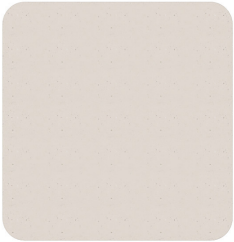
Eased square

- Sizes: 30x30, 42x42, 48x48, 54x54, 60x60

Round

- Diameters: 36", 42", 48", 54", 60"

Soft square



Plan view



34-30STC on 34-TFP trifoil base



34-42STC on 34-DFC duofoil legs

Eased square



Plan view



34-30SSTC on 34-TFP trifoil base



34-42SSTC on 34-DFC duofoil legs

Round



Plan view



34-36RTC on 34-TFP trifoil base



34-42RTC shown on 34-DFC duofoil legs

Solid surface With overlay, continued

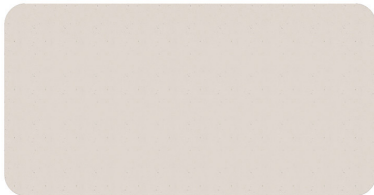
General

- 1.1875" thick veneer subtop with 0.5" solid surface overlay, 1.6875" total thickness
- Specify bases separately
- 72"w and 84"w tops require two sets of duofoil legs
- 96"w and 108"w tops require three sets of duofoil legs

Soft rectangle

- Widths: 72"w, 84"w, 96"w, 108"w
- Depths: 36"d or 42"d

Soft rectangle



Plan view



34-7236RTC with four 34-DFC duofoil legs



34-9636RTC with six 34-DFC duofoil legs



Modular Supports

General

- Includes cable management cavity with top and bottom retaining clips

Trifoil pedestal base

- Support for 30" square and 36" round tops
- 4.25" diameter extruded trifoil shape
- 22" diameter disc base
- **Note:** Color finish option is for column, disc base standard in powder coat black

Duofoil legs

- Worksurface height support
- 3.5" x 1.5" extruded duofoil shape
- Legs mount at 10 degree angle
- Sold in pairs
- Available with glides or casters
- **Note:** Caster version not for use with overlay tops

Trifoil



Trifoil pedestal

Duofoil



Duofoil, glides



Duofoil, casters

Power supplies

Max

- Free place power to any surface
- Solid ash housing, four cord finishes
- 10' woven cord with leather strap. 45° grounded flat plug for flush wall mounting
- 15 amp 125 volt 1875 watt
- Three grounded power outlets
- Desktop, wall, or vertical mount

Mya

- Free place power to any surface
- Solid ash housing, four cord finishes
- Powder coated steel base
- 10' woven cord with leather strap. 45° grounded flat plug for flush wall mounting
- 15 amp 125 volt 1875 watt
- Three grounded power outlets

Misc power

- PS-77: (6) outlet surge protector, 10' power cord
- PS-100: (1) Outlet, (1) USB-A charging port, (1) USB-C charging port, 9' braided power cord
- WC-2: Wireless charging, single or multi unit, field installed

Note: See power supply matrix for additional cutout power options

Max



Power strip
PS-3AC

Mya



Power strip with base
PS-3ACS

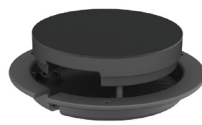
Misc power



Undersurface
PS-77



Set on power
PS-100



Set on power
WC-2

Lighting

Tilly

- 6" diameter table top base or clamp mount. **Note:**
Clamps to worksurfaces 0.5"-1.25" thick
- Single or double arm
- Powder coated aluminum
- Brightness dimming
- 3' silver cord and 9' black 18 watt wall transformer
- Automatic shutoff after 10 hours
- Optional USB

Ella

- Two heights: freestanding floor lamp or surface mounted
- Frosted acrylic diffuser
- Powder coated aluminum/steel
- Brightness dimming
- 11' cord
- Automatic shutoff after 10 hours
- Optional 2 amp USB-A charging ports (surface mount only)
- **Note:** Surface mount requires a 3.5" diameter hole and mounts to a surface that is .935" to 1.185" thick

JoJo

- Pendant lamp
- Powder coated aluminum shade
- Opal glass diffuser
- 10' cord
- Full range dimming with wireless control

Tilly



LCA-TL3BM shown

Ella



LCA-TL1

JoJo



LCA-PL1

Work accessories

Coop

- 13.5" w x 9.5" d x 7.5" h
- Powder coated aluminum
- Solid white oak handle
- Divided storage compartments

Skid

- 3.5" w x 8.5" d x 3" h
- Powder coated steel base and pencil cup
- Integrated solid white oak tray

Prio

- Nesting storage vessels. 3 piece set in two finish palettes: Neutral and Earth
- 2.5" w x 2.5" d
- Heights: 3", 4.13" and 5.25" h all included
- Powder coated aluminum and thermoplastic
- Removable rubber bottoms for water resistance and easy cleaning

Porter

- Formed aluminum planter
- Width: 15"
- Heights: 17" h, 25" h, and 35" h
- Depths: 15" d and 30" d
- Height adjustable inner-tray accepts standard liners
- Ships flat packed
- No tools necessary for assembly
- Plastic liner included

Duke

- 1.75" w x 1.5" d x 3.25" h
- Solid ash
- Metal stud and plastic wall anchor for mounting

Coop



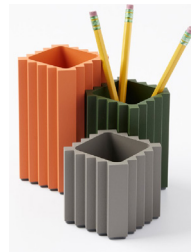
LCA-DC1

Skid



LCA-DT01

Prio



LCA-NSV1
Earth shown

Porter



LCA-PL15_____

Duke



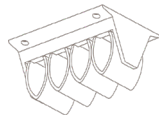
LCA-WH1

Wire management

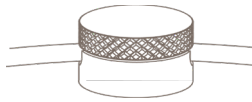
- Velcro wire manager strip comes in pack of four, not intended for heavy duty cabling
- Cable management clip, mounts to underside of surface, three positions, not intended for heavy duty cabling
- Wire management cord stay comes as a set of two, and can manage cords ¼" diameter along any TFL or veneer item
- Plastic, wire basket, trough and PET wire manager are used to manage user cords horizontally along underside of surface
- Fabric wire manager and table to table connection are commonly used to manage wires that span from a height adjustable surface to a fixed height surface
- Adjustable height wire manager commonly used in stand alone height adjustable table applications



Velcro wire manager
WM-V4



Cable management
undersurface clip
CM30-NR



Cord stay
WMCS



Plastic wire manager
WM2-__



Wire basket manager
WBT-__H



Wire management trough
WMT-__



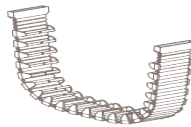
PET wire manager
WM-P__



Fabric wire manager
WM-HA6



Height adjustable
table desk manager
WM-HA



Height adjustable
table to table manager
WM-HA_