

Aptos building blocks

---





## Table of contents

Height adjustable - peninsula desks	3
Height adjustable - sweep top desks	4
Height adjustable - credenzas	5-6
Built up - desks	7-8
Built up - return/bridge	9
Built up - credenzas	10-11
Built up - low height floor storage	12
Storage - highback organizer	13
Storage - worksurface cabinets	14
Storage - wallmount organizers	15-16
Storage - lateral files and bookcases	17
Storage - towers	18-19
Storage - mobile pedestals	20
Modular - wallmount tackboards	21
Modular - desk surfaces/cabinet tops	22
Modular - runoff desk surfaces	23
Modular - elevated runoff desk surfaces	24
Modular - worksurface accessories	25
Modular - pedestals, desk height	26-27
Modular - pedestals, low height	28
Modular - supports	29-30
Table desks/conference tops	31-38
Benching	39-51
Power supplies	52
Lighting	53
Work accessories	54-55
Wire management	56

## Height adjustable Peninsula desks

### General

- Ships KD. Top, cabinet and panel base ship separately
- Table maximum weight is 100 lbs
- Optional PS-77 power supply
- Panel base handed left or right, removable interior access panel
- **Note:** Not freestanding unit, must connect to pedestal or storage cabinet

### Worksurfaces general

- 30x68 (28x66 actual), 30x74 (28x72 actual), 36x68 (34x66 actual), 36x74 (34x72 actual)
- 2" wall end clearance, and 1" clearance on each side of the worksurface
- Veneer or solid surface, rectangle or soft rectangle surface shapes
- Field installed grommet recommend for wire management

### Veneer worksurface

- Long grain direction
- Square edge standard, optional 2" flat knife edge
- Knife edge option on rectangular surface profile on approach and user sides
- Knife edge option on the soft rectangular worksurface profile around the perimeter

### Solid surface worksurface

- Knife edge standard for both worksurface shapes
- Rectangular surface features 2" flat knife profile on approach and user sides
- Soft rectangular surface features 2" flat knife profile around perimeter

### Cabinet

- 18"d or 24"d low height cabinet, long grain surface
- Unfinished back
- One adjustable and one stationary shelf on user side, removable access panel on approach side
- Open section has hinged down back panel for wall access

### Veneer

left hand shown



User side, 18"d

### Solid surface

left hand shown



User side, 24"d

### Worksurface shapes



Rectangle



Soft rectangle

## Height Adjustable Sweep top desks

### General

- Ships KD. Top, cabinet and panel base ship separately
- Optional PS-77 power supply
- Table maximum weight is 100 lbs

### Worksurfaces

- 68x48 (66x46 actual), 68x54 (66x52 actual), 68x60 (66x58 actual), 74x60 (72x58 actual)
- 2" wall end clearance, and 1" clearance on each side of the worksurface
- Veneer or solid surface. Long grain on veneer
- 2" flat knife profile around perimeter
- Field installed grommet recommended for wire management

### Base

- Column base standard, optional panel base
- Handed left or right
- Removable interior access panel on panel base
- **Note:** 24"d low cabinet desks 68"w and smaller only available with a panel base support

### Cabinet

- 18"d or 24"d low height cabinet, long grain surface
- Unfinished back
- One adjustable and one stationary shelf in center cabinet
- Removable access panel on approach and user side
- Open section has hinged down back panel for wall access

### 18"d cabinets



Veneer  
standard column base, optional panel base



Solid surface  
standard column base, optional panel base

### 24"d cabinets



Veneer- 68"w desks  
standard panel base, no column base



Solid surface - 68"w desks  
standard panel base, no column base



Veneer - 74"w desks  
standard column base, optional panel base



Solid surface - 74"w desks  
standard column base, optional panel base

### Surface sizes



Plan view  
68x48



Plan view  
68x54



Plan view  
68x60



Plan view  
74x60

## Height adjustable Credenza, low cabinet

### General

- Worksurface shapes: rectangle or soft rectangle
- 12"d low height cabinet with removable access panel and unfinished back
- Optional PS-77 power supply
- Ships KD. Top, low height cabinet ship separately
- Field installed grommet recommended for wire management
- Table maximum weight is 100 lbs
- **Note:** Must connect to 18"w pedestal or end panel at both ends for stability
- **Note:** Clamp mount accessories not for use on flat knife profiles

### Veneer worksurface

- Long grain direction
- Square edge standard, optional 2" flat knife edge
- Knife edge option on rectangular surface profile on user side
- Knife edge option on the soft rectangular worksurface profiled around the perimeter

### Solid surface worksurface

- Knife edge standard for both worksurface shapes
- Rectangular surface features 2" flat knife profile on user side
- Soft rectangular surface features 2" flat knife profile around perimeter

### Centered worksurface

- 48x26 or 60x26. Actual surface size is 46x24 and 58x24
- 2" wall end clearance, and 1" clearance on each side of the worksurface

### Left and right worksurface

- 55x26 or 67x26. Actual surface size is 54x24 and 66x24
- Left and right credenza: 2" wall end clearance, and 1" clearance on non overhang side
- Surface overhangs cabinet by 7"

### Surface shapes



Rectangle



Soft rectangle

### Surface materials



Veneer



Solid surface

### Credenza worksurface locations



Centered



Left



Right

## Height adjustable Credenza, kneespace

### General

- 48x26 or 60x26, actual surface size is 46x24 and 58x24
- 7" w low height panel bases with removable access panels. 18"d or 24"d
- Worksurface shapes: rectangle or soft rectangle
- Veneer or solid surface worksurfaces
- Optional PS-77 power supply
- Ships KD. Top and panel bases ship separately
- Field installed grommet recommended for wire management
- Table maximum weight is 100 lbs
- **Note:** Must connect to pedestal or storage cabinet for stability

### Veneer worksurface

- Long grain direction
- Square edge standard, optional 2" flat knife edge
- Knife edge option on rectangular surface profile on user side
- Knife edge option on the soft rectangular worksurface profile around the perimeter

### Solid surface worksurface

- Knife edge standard for both worksurface shapes
- Rectangular surface features 2" flat knife profile on user side
- Soft rectangular surface features 2" flat knife profile around perimeter

### Surface shapes



Rectangle



Soft rectangle

### Surface materials



Veneer



Solid surface

## Built up Desks, double pedestal

### General notes

- Box/box/file pedestal on user left. Two box drawers hidden by top file drawer front
- File/file pedestal on user right
- Full height modesty panel
- Optional locking
- Optional grommets: left, right, or left and right
- 66" w desks feature 15" w pedestals
- 72" and 84" w desks feature 18" w pedestals

### Recessed modesty

- Sizes available:
  - Rectangular: 30x60, 36x66, 30x72, 36x72, 42x72, 36x84, 42x84
- 6" approach side overhang

### Breakfront modesty

- Sizes available:
  - Rectangular: 30x66, 36x66, 30x72, 36x72, 36x84
- Modesty panel recesses 5" between pedestals

### Breakfront recessed modesty

- Sizes available:
  - Rectangular: 36x72, 36x78, 36x84, 42x72, 42x78, 42x84
- 6" approach side overhang with modesty panel recessed 5" between pedestals

### Recessed modesty



Approach side



User side

### Breakfront modesty



Approach side



User side

### Recessed breakfront modesty



Approach side



User side

### Grommets



Plan view  
optional left and right grommets

## Built up Desks, single pedestal

### General notes

- Box/box/file pedestal on user left or right. Two box drawers hidden by top file drawer front
- Full height modesty panel
- Optional locking
- Optional grommets: left, right, or left and right
- 66" w desks feature 15" w pedestals
- 72" and 84" w desks feature 18" w pedestals

### Flush modesty

- Sizes available:
  - Rectangular: 30x66 or 30x72
- Modesty is flush to edge of worksurface on approach side

### Recessed modesty

- Sizes available:
  - Rectangular: 36x66 or 36x72
- 6" approach side overhang

### Breakfront modesty

- Sizes available:
  - Rectangular: 30x66, 36x66, 30x72, 36x72
- Modesty panel recesses 5" between pedestals

### Asymmetrical modesty

- Sizes available:
  - Rectangular: 30x66, 36x66, 30x72, 36x72
- Modesty panel recesses 5" next to pedestal

### 30"d flush modesty



Approach side



User side

### 36"d recessed modesty



Approach side



User side

### Breakfront modesty



Approach side



User side

### Asymmetrical modesty



Approach side



User side

### Grommets



Plan view  
optional left and right grommets

### Interior leg detail





## Built up Returns and bridges

### General notes

- Center grommet standard. Additional grommets can be specified in any combination of left, right and center
- Finished back. Optional hinged access panel

### Bridge

- 22x42 or 22x48

### Bridge with end panel

- 22x42 or 22x48, handed left or right
- Cannot be used with modular pedestals

### Bridge



Finished back panel



Optional hinged back panel

### Bridge with end panel



Finished back panel



Optional hinged back panel

### Bridge options



Plan view  
Center grommet standard. optional left and right grommets



Optional hinged access panel

## Built up Credenzas, pedestals

### General notes

- Unfinished back standard. Optional finished back or hinged access panel for all pedestal credenzas
- Center grommet standard. Additional grommets can be specified in any combination of left, right and center

### Kneespace Personal storage

- 24x66 or 22x72
- Two slide out personal storage pedestals with hidden box drawers

### Kneespace Double pedestal

- 24x66 or 22x72
- Two file/file pedestals
- 66" w desks feature 15" w pedestals
- 72" and 84" w desks feature 18" w pedestals

### Single pedestal

- File/file or lateral file credenza
- 24x66 or 24x72
- Pedestal credenza features 18" w file/file
- Lateral credenza 24x66 features 30" w lateral file drawers. 24x72 features 36" w lateral file drawers
- Handed left or right

### Kneespace Personal storage



Two slide out storage

### Kneespace Double pedestal



Four file drawers

### Single pedestal



File/file



Lateral file

### Options



Plan view  
Center grommet standard. optional left and right grommets



Lateral and multi file  
optional hinged access panel

## Built up Credenzas, storage

### General notes

- Finished back panel
- Grommets can be specified in any combination of left, right and center

### Double lateral file

- 24x60 or 24x72
- 60"w features four 30"w drawers and 72"w features four 36"w drawers
- No center grommet option

### Pedestal/lateral file

- 24x66 or 24x72
- Two 18"w file/file drawers at each end
- Centered lateral file drawers
- 66"w features two 30"w drawers and 72"w features two 36"W drawers

### Double lateral file



### Pedestal/lateral file



## Built up Low height floor storage

### General

- Depth: 18"d
- Handed left or right based on wider section location
- All shelving sections feature one stationary and one adjustable shelf
- Includes .75" thick top and finished back panel

### 60"-72"w

- Widths:
  - 60"w: Two 30"w openings
  - 72"w: Two 36"w openings
- Storage configurations:
  - Double box/lateral file
  - Box/lateral and open shelving. Handed based on lateral file location
  - Double open shelving

### 42"-54"w

- Widths:
  - 42"w: 12"w and 30"w openings
  - 48"w: 18"w and 30"w openings
  - 54"w: 18"w and 36"w openings
- Storage configurations:
  - Box/lateral and box/file
  - Box/file and wide open shelving
  - Open shelving and lateral
  - Open shelving

### 42"-54"w storage



Box/lateral and box/file



Box/file and wide open shelving



Open shelving and lateral



Open shelving

### 60"-72"w storage



Double lateral file



Wide open shelving, lateral



Wide double open shelving

## Storage Highback organizer

### General

- Widths: 60"w, 66"w, 72"w
- Height: 38.75"h
- Depth: 15.63"d
- Highback organizers with open sections are handed based on door location
- Unfinished back. Optional finished back
- Optional tackboard available
- Optional integrated LED tasklight, located on left side

### Lift up door

- Available with one lift up door and one open section, or two lift up doors
- Soft opening and closing mechanism
- Wood divider panels

### Hinged door

- Available with two hinged doors and one open section, or four hinged doors
- One storage section per set of doors
- Wood divider panels

### Sliding glass door

- Available with one sliding glass door and one open section, or two sliding glass doors
- Glass divider panel matches door finish

### Tackboard

- One piece tackboard
- Insets between highback organizer vertical panels
- Specified separately

### Lift up door



Single door/open



Double door

### Hinged door



Double door/open



Four doors

### Sliding glass door



Single door/open



Double door

### Tackboard



## Storage Worksurface cabinets

### General

- Depth: Open cabinet is 14.5"d, hinged and asymmetrical cabinet is 15.63"d
- Height: 38.75"h
- Unfinished back standard. Optional finished back
- Two adjustable 1" thick shelves with beveled edge and one fixed shelf, per section

### Open

- Widths: 12"w, 15"W, 18"w, 24"w, 30"w, 36"w
- 24"w - 30"w have center divider and four adjustable shelves, and two fixed shelves total

### Hinged

- Widths: 12"w, 15"w, 18"w
- Cabinet is handed based on door hinge location

### Asymmetrical

- Widths: 24"w, 30"w, 36"w
- Cabinet is handed based on door hinge location
- Open shelf opposite closed door. 24"w has 8.25"w open shelf. 30"w and 36"w have 11.25"w open shelf

### Open



12"w-18"w



24"w-36"w

### Hinged door



### Asymmetrical



## Storage Wallmount organizers

### General

- Height: 14.5"h
- Depth: Lift up and hinged door organizers are 15.63"d, glass door organizers are 14.5"d
- Optional integrated LED tasklight, located on left

### Lift up door organizer

- Widths: 60"w - 108"w in 6" increments
- 60"-78"w features one lift up door with open section (handed), or two lift up doors
- 84"-108"w features either three lift up doors, two lift up doors with open center section, or center lift up door with open end sections
- Soft opening and closing mechanism

### Hinged door organizer

- Widths: 60"w - 108"w in 6" increments
- 60"-78"w features two hinged door with open section (handed), or four hinged doors
- 84"-108"w features either six hinged doors, four hinged doors with open center section, or center hinged doors with open end sections

### 60"-78"w lift up door



Lift up door with open section  
right hand shown



Two lift up doors

### 84"-108"w lift up door



Three lift up doors



Two lift up doors with open center section



Center lift up door with open end sections

### 60"-78"w hinged door



Two hinged doors with open section  
right hand shown



Four hinged doors

### 94"-108"w hinged door



Six hinged doors



Two hinged doors at each end with open  
center section



Two hinged doors in center with open  
end sections

## Storage Wallmount organizers, continued

### General

- Height: 14.5"h
- Depth: Lift up and hinged door organizers are 15.63"d, glass door organizers are 14.5"d
- Optional tackboard available
- Optional integrated LED tasklight, located on left

### Sliding glass door organizer

- Widths: 60"w, 66"w, 72"w, 78"w, 84"w, 90"w, 96"w, 102"w, 108"w
- 60"-78"w features one sliding glass door with open section (handed), or two sliding glass doors
- 84"-108"w features center sliding glass door with open sections at each end
- Glass divider panel matches door color

### Open end organizer

- Widths: 60"w, 66"w, 72"w
- Open section cantilevered fixed shelf (no end panel)
- Door option opposite end:
  - Lift up door
  - Two hinged doors
  - One sliding glass door
- Shelf maximum weight is 25 lbs per foot

### Open shelf

- Widths: 30"w-108"w in 6" increments
- Depth: 14.5"d
- Cantilevered fixed shelf
- Ganged to other shelves in left, right or center locations
- Shelf maximum weight is 25 lbs per foot

### Glass door organizers



One sliding glass door



Two sliding glass doors



Center sliding glass door with open end sections

### Open end organizers



One lift up door



Two hinged doors



One sliding glass door

### Open shelf





## Storage Lateral files and bookcases

### Lateral files

- Widths: 30"w and 36"w
- Depth: 24"d
- Heights: 29.5"h (2 drawer), 43.13"h (3 drawer), 56"h (4 drawer)
- Letter or legal filing
- Finished back

### Bookcases

- Widths: 30"w and 36"w, center divider panel
- Depth: 12"d
- Heights: 29"h, 42"h, 55"h, 68.25"h
- 29"h: two stationary and two adjustable shelves
- 42"h: two stationary and four adjustable shelves
- 55"h: two stationary and six adjustable shelves
- 68.25"h: two stationary and eight adjustable shelves
- 1" thick shelves with beveled edge
- Unfinished back standard, optional finished back

### Lateral files



2 Drawer lateral



3 Drawer lateral



4 Drawer lateral

### Bookcases



29"h



42"h



55"h



68.25"h

## Storage Towers, privacy height

### General

- Heights: 42"h
- Unfinished back standard, optional finished back
- Coat sections: 18"d towers feature a coat hook, 24"d towers feature a hang rod
- Option for coat sections to be two adjustable 1" thick shelves with beveled edge and one fixed shelf

### Open storage

- Widths: 12"w, 18"w, 24"w, 30"w, 36"w
- Depths: 16.75"d or 22.75"d
- 24"w-36"w have center divider
- Two adjustable 1" thick shelves with beveled edge and one fixed shelf per section
- **Note:** 12"w x 16.75"d not to be used as freestanding

### Hinged door

- Widths: 12"w, 18"w, 24"w, 30"w, 36"w
- Depths: 17.88"d or 23.88"d
- 24"w-36"w have center divider
- Single door cabinets are hinged left or right and features coat storage as standard
- Double door cabinets feature coat storage on right side, and two adjustable 1" thick shelves with beveled edge and one fixed shelf on left
- Optional pull for double door cabinets will be added to right door only

### Open/hinged door

- Widths: 24"w, 30"w, 36"w with center divider
- Depths: 17.88"d or 23.88"d
- Open/hinged door cabinets feature coat storage on right side, and two adjustable 1" thick shelves with beveled edge and one fixed shelf on left
- Optional pull for door

### Open



### Hinged door



### Open/hinged



## Storage Towers, tall height

### General

- Heights: 68.25"h
- Unfinished back standard, optional finished back
- Coat sections: 18"d towers feature a coat hook, 24"d towers feature a hang rod
- Option for coat sections to be three adjustable 1" thick shelves with beveled edge and two fixed shelves

### Open storage

- Widths: 12"w, 18"w, 24"w, 30"w, 36"w
- Depths: 16.75"d or 22.75"d
- 24"w-36"w have center divider
- Three adjustable 1" thick shelves with beveled edge and two fixed shelves per section
- **Note:** 12"w x 16.75"d not to be used as freestanding

### Hinged door

- Widths: 12"w, 18"w, 24"w, 30"w, 36"w
- Depths: 17.88"d or 23.88"d
- 24"w-36"w have center divider
- Single door cabinets are hinged left or right and features coat storage as standard
- Double door cabinets feature coat storage on right side, and three adjustable 1" thick shelves with beveled edge and two fixed shelves on left
- Optional pull for double door cabinets will be added to right door only

### Open/hinged door

- Widths: 24"w, 30"w, 36"w with center divider
- Depths: 17.88"d or 23.88"d
- Open/hinged door cabinets feature coat storage on right side, and two adjustable 1" thick shelves with beveled edge and one fixed shelf on left
- Optional pull for door

Open display



Hinged door



Open/door



## Storage Mobile pedestals

### Mobile pedestal Finished top

- 15"w x 17.88"d x 20.81"h
- One box drawer and one file drawer for letter filing behind full front
- Optional cushion top with french seam detail around perimeter

### Mobile pedestal PET top

- 15"w x 17.88"d x 20.81"h
- One box drawer and one file drawer for letter filing behind full front
- Grey PET insert on top with dividers

#### Finished top



#### Cushion top



#### PET top



Top detail

## Modular Wallmount tackboards

- 24" h tackboard: use between worksurface height and wallmount
- 31.25" h tackboard: use between low height and wallmount
- 38.63" h tackboard: use when tackboard is over worksurface height cabinets, no wallmount storage
- 45.88" h tackboard: use when tackboard is over low height cabinets, no wallmount storage
- 102" w and 108" w tackboards are two pieces
- Includes support rail to mount to wall

24" h



31.25" h



38.63" h



45.88" h



## Modular Desk surfaces/cabinet tops

### General

- Optional grommet: any combination of left, right and center
- **Note:** Unsupported spans greater than 48" require worksurface straightener

### Modular desk top

- Use with modular desk pedestals and supports
- Depths: 30"d, 36"d, 42"d
- Widths: 60-84"w in 6" increments. Note: 42"d available as 78"w and 84"w only
- 1.1875" thick surface with square profile on all four sides
- Long grain
- Clamp plates required at surface connection points, specified separately

### Worksurface height cabinet top

- Use with worksurface height cabinets, or as a bridge or return. Clamp plates required at surface connection points, specified separately
- Depth: 24"d
- Widths: 30"w-120"w in 6" increments
- 1.1875" thick surface with square profile on approach and user side
- Long or short grain

### Low height cabinet top

- Use with low height cabinets. **Note:** Not to be used as a bridge or return
- Depths: 18"d or 24"d
- Widths: 30"w-96"w in 6" increments
- 0.75" thick surface with square edge on user side
- Long or short grain

### Desk height worksurfaces



Long grain - for modular desk top and worksurface height cabinet top



Short grain - for worksurface height cabinet top

### Low height worksurfaces



Long grain



Short grain



Optional left, center, and right grommets shown

## Modular Runoff desk surfaces

### General

- Short grain veneer surface or substrate
- Specify leg/column supports separately
- Clamp plates included

### Veneer

- Use with worksurface height pedestals and worksurfaces
- Rectangle shape only
- Depths: 30"d or 36"d
- Widths: 60"w, 66"w, 72"w
- 1.1875" thick surface with flat profile on all three sides

### Glass or solid surface overlay

- Subtop flat edge connects to worksurface height pedestals and worksurfaces
- Soft rectangle:
  - 30"d or 36"d
  - 66"w, 72"w, 78"w
- Eased rectangle:
  - 36"d or 42"d
  - 66"w, 72"w, 78"w
- Wedge:
  - 36"d: widths 66"w, 72"w, 78"w
  - 42"d: widths 72"w and 78"w only
- 1.6875" total thickness including 0.5" glass or solid surface overlay. 1.1875" thick subtop with flat edge all three sides
- **Note:** Overlay surfaces will raise overall surface height by 0.5"

### Veneer



### Glass overlay



### Solid surface overlay



### Overlay surface shapes

Shown in glass overlay



Soft rectangle



Eased rectangle



Wedge

## Modular Elevated runoff desk surfaces

### General

- Use with low height pedestals and worksurfaces
- Specify standoffs, leg or column supports separately. Requires two standoffs along return
- 1.1875" thick surface
- Optional power supply or grommet cutout
- **Note:** Clamp on accessories will not work on flat knife profiles

### Veneer or solid surface

- Rectangle (veneer only):
  - 30"d: 66"w, 72"w, 78"w, 84"w
  - 36"d: 72"w, 78"w, 84"w
  - Flat profile on four sides
  - **Note:** Use 30x66 with 18"d cabinets only

### Soft rectangle:

- 30"d: 66"w, 72"w, 78"w, 84"w
- 36"d: 72"w, 78"w, 84"w
- 2" flat knife profile around perimeter
- **Note:** Use 30x66 with 18"d cabinets only

### Wedge:

- 36"d: 66"w, 72"w
- 42"d: 66"w, 72"w, 78"w
- 2" flat knife profile around perimeter
- **Note:** Use 36x66 and 42x66 with 18"d cabinets only

### Sweep:

- 46x66, 52x66, 58x66, 58x72, 58x78
- Handed left or right
- 2" flat knife profile around perimeter
- **Note:** Use 46x66, 52x66, and 58x66 with 18"d cabinets only

### Veneer



### Solid surface



### Worksurface shapes



Rectangular  
Veneer only



Soft rectangle



Wedge



Sweep  
left hand



Sweep  
right hand



## Modular Worksurface accessories

### Partial modesty panel

- Widths: 32", 38"w, 44"w, 50"w, 56"w
- Depth: 0.75"d
- Height: 7"h
- Below surface modesty panel
- Vertical grain veneer panel
- Field installed

### Edge mount privacy panel

- Widths: 38"w, 44"w, 50"w, 56"w
- Depth: 1.44"d
- Heights: 19.5"h (for 42"h applications) and 25.5"h (for 48"h applications)
- Fabric or veneer panel. Fabric is tackable, vertical grain veneer panel
- Mounts to underside of worksurface, brackets included
- Leaves 1.5" wire management gap between privacy panel and surface edge
- Field installed
- **Note:** Fabric edge modesty not for use with open plan height adjustable worksurfaces

### Partial modesty panels



Wood panel

### Edge mount privacy panel



Fabric  
for 42" applications



Fabric  
for 48" applications



Veneer  
for 42" applications



Veneer  
for 48" applications

## Modular Drawer pedestals, desk height

### General

- Use with modular worksurfaces
- 29.75 and 35.75"d pedestals feature finished back. 22.63"d pedestals feature unfinished back, use with modular back panels or filler strip
- Optional locking
- File drawers can accommodate letter or legal filing
- **Note:** Cannot be used as freestanding units

### Box/box/file

- Top section features two box drawer hidden behind file drawer front. Bottom section is file drawer
- 22.63"d pedestal available as 15"w or 18"w
- 29.75"d and 35.75"d available as 15"w

### File/file

- Two file drawers
- 22.63"d pedestal available as 15"w or 18"w
- 29.75"d and 35.75"d available as 15"w

### Open/file

- Open shelf above file drawer
- 22.63"d pedestal available as 15"w or 18"w
- 29.75"d and 35.75"d available as 15"w

### Open/lateral

- Open shelf above lateral file drawer
- Width: 30" or 36"w
- Depth: 22.63"d

### Lateral file

- Two lateral file drawers
- Width: 30" or 36"w
- Depth: 22.63"d

### Slide out storage

- Bottom storage drawer and hidden box drawer behind pedestal front
- Width: 12"w
- Depths: 22.63"d, 29.75"d, 35.75"d
- **Note:** Slide out pedestal will not work under left or right grommet

### Box/box/file



15"w or 18"w

### File/file



15"w or 18"w

### Open/file



15"w or 18"w

### Open/lateral



30"w or 36"W

### Lateral file



30"w or 36"W

### Slide out storage



12"w



## Modular Storage pedestals, desk height

### General

- Use with modular worksurfaces
- **Note:** Cannot be used as freestanding units

### Shelf pedestals

- Widths: 12"w, 15"w, 18"w, 30"w, 36"w
- Depth: 21.5"d
- One stationary and one adjustable shelf
- 12"w pedestal will not work under left or right grommet
- Hinged down back for wall access

### Open/door

- 30"w or 36"w
- 22.63"d
- One stationary and one adjustable shelf in each section
- Unfinished back, specify modular back panel or filler panel separately
- Left or right hinged door
- Optional locking

### Hinged door

- 22.63"d single door models available in 12"w, 15"w, or 18"w
- 22.63"d double door models available in 30"w or 36"w
- 29.75"d and 35.75"d models available in 15"w
- One stationary and one adjustable shelf
- 12"w pedestal will not work under left or right grommet
- Optional locking
- Hinge down back for wall access

### Shelf pedestals



12-18"w pedestals



30-36"w pedestals

### Open/door



Open/door  
right hinged door shown

### Hinged door



Single door



Double door

## Modular Pedestals, low height

### General

- Widths: 30"w or 36"w
- Depths: 16.63"d or 22.63"d
- Use with 18"d or 24"d modular worksurfaces for low height storage, specified separately
- Unfinished back, use with modular back panels or filler strip
- Optional locking for drawer and door pedestals
- **Note:** Cannot be used as freestanding units

### Box/file

- One wide box drawer and one lateral file drawer

### Open/file

- One wide open shelf and one lateral file drawer

### Open shelving

- One stationary and one adjustable shelf

### Double door

- Two hinged doors
- One stationary and one adjustable shelf

### Hinged door/open

- Hinged door handed left or right

### Box/box/file



18"d or 24"d

### Open/file



18"d or 24"d

### Open shelving



18"d or 24"d

### Double door



18"d or 24"d

### Open shelving/hinged door



18"d or 24"d

## Modular Supports, veneer

### Wing Assembly

- Worksurface height support
- Use with 30"d and 36"d modular worksurface
- Finished back
- Two stationary shelves on interior side
- **Note:** Cannot be used as a freestanding units

### End panel

- 34-18EP: use with 18"d modular cabinet tops
- 34-24EP: use with 24"d modular cabinet tops
- 34-30EP: use with 30"d rectangular runoff surfaces
- 34-36EP: use with 36"d rectangular runoff surfaces
- If attaching a 34-18EP or 34-24EP to a back panel, specify SCWBKT-1 bracket separately

### Filler panel

- Use on backside of pedestals to fill 1.25" top overhang gap at end of run when not using a back panel
- Available for worksurface and low heights

### Back panel

- Widths available between 30"-108"w in 6" increments
- Available for worksurface and low heights
- Provides a finished back for modular pedestals or end panels
- Finished on both sides
- Aligns with bottom of the pedestal (1.5" above floor)
- Specify as full length

### Fold down back panel

- Widths available between 12"-94"w, worksurface height only
- Any width in 1/8" increments available within ranges noted
- Upper section folds down to provides wall access for cable management
- 12"-48"w features one fold down access panel
- 48.06"-94"w features two fold down access panels and center support cantilever bracket
- Unfinished back
- Feet included for support
- Specify length to fit between pedestals or end panels



Wing assembly



End panel



Filler panel



Back panel



Fold down back panel



Optional hinged access panel



Optional hinged access panel

## Modular Supports, metal

### General

- Includes cable management cavity with top and bottom retaining clips

### Trifoil column base

- Worksurface height support for runoff worksurfaces
- 4.25" diameter extruded trifoil shape
- **Note:** Not for use with conference or table desk surfaces

### Trifoil pedestal base

- Support for 30" square and 36" round tops
- 4.25" diameter extruded trifoil shape
- 22" diameter disc base
- **Note:** Color finish option is for column, disc base standard in powder coat black

### Duofail legs

- Worksurface height support
- 3.5" x 1.5" extruded duofail shape
- Legs mount at 10 degree angle
- Sold in pairs
- Available with glides or casters
- **Note:** Caster version not for use with overlay tops

### Duofail standoffs

- Used to connect worksurface height tops with low height cabinets
- 3.5" x 1.5" extruded duofail shape
- Legs mount perpendicular to worksurface
- Sold individually
- **Note:** Requires field boring of low height worksurface



Trifoil column



Trifoil pedestal



Duofail, glides



Duofail, casters



Duofail, standoff

## Table/conference top Veneer

### General

- 1.1875" thick veneer surface
- 2" flat knife profile around perimeter
- **Note:** Clamp on accessories will not work on 2" flat knife edge
- Specify bases separately
- For 30x30 and 36" dia. tops use 34-TFP trifoil base
- Tops 42" and up require two sets of 34-DFC duofoil legs

### Soft square

- Sizes: 30x30, 42x42, 48x48, 54x54, 60x60
- 4" radius on corners
- For grommet or power supply cutout, specify ST model

### Eased square

- Sizes: 30x30, 42x42, 48x48, 54x54, 60x60
- For grommet or power supply cutout, specify SST model

### Round

- Diameters: 36", 42", 48", 54", 60"
- For grommet or power supply cutout, specify VT model

### Soft square



Plan view



30x30 on 34-TFP trifoil base



42x42 shown on 34-DFC duofoil legs

### Eased square



Plan view



30x30 on 34-TFP trifoil base



42x42 shown on 34-DFC duofoil legs

### Round



Plan view



30" dia. on 34-TFP trifoil base



42" dia. shown on 34-DFC duofoil legs

## Table/conference top Veneer, continued

### General

- 1.1875" thick veneer surface
- 2" flat knife profile around perimeter
- **Note:** Clamp on accessories will not work on 2" flat knife edge
- Specify bases separately

### Soft rectangle

- Widths: 72"w, 84"w, 96"w, 108"w
- Depths: 36"d or 42"d
- 72"w and 84"w tops require two sets of duofoil legs
- 96"w and 108"w tops require three sets of duofoil legs
- For grommet or power supply cutout, specify RT model

### Eased rectangle

- Widths: 66"w, 72"w, 78"w, 84"w
- Depths: 36"d or 42"d
- All top sizes require two sets of duofoil legs
- For grommet or power supply cutout, specify VT model

### Eased rectangle



Plan view



36x72 shown with four 34-DFC duofoil legs

### Soft rectangle



Plan view



36x72 shown with four 34-DFC duofoil legs



36x96 shown with six 34-DFC duofoil legs



## Table/conference top Glass Overlay

### General

- 1.1875" thick veneer surface
- 2" flat knife profile around perimeter
- **Note:** Clamp on accessories will not work on 2" flat knife edge
- Specify bases separately
- For 30x30 and 36" dia. tops use use 34-TFP trifoil base
- Tops 42" and up require two sets of 34-DFC duofoil legs

### Soft square

- Sizes: 30x30, 42x42, 48x48, 54x54, 60x60
- 4" radius on corners

### Eased square

- Sizes: 30x30, 42x42, 48x48, 54x54, 60x60

### Round

- Diameters: 36", 42", 48", 54", 60"

### Soft square



Plan view



30x30 on 34-TFP trifoil base



42x42 shown on 34-DFC duofoil legs

### Eased square



Plan view



30x30 on 34-TFP trifoil base



42x42 shown on 34-DFC duofoil legs

### Round



Plan view



30" diam. on 34-TFP trifoil base



42" dia.. shown on 34-DFC duofoil legs

## Table/conference top Glass overlay, continued

### General

- 1.1875" thick veneer subtop with 0.375" glass overlay, 1.5625" total thickness
- Veneer subtop with flat edge inset 1.5" around perimeter
- Specify bases separately

### Soft rectangle

- Widths: 72"w, 84"w, 96"w, 108"w
- Depths: 36"d or 42"d
- 72"w and 84"w tops require two sets of duofoil legs
- 96"w and 108"w tops require three sets of duofoil legs

### Soft rectangle



Plan view



36x72 shown with four 34-DFC duofoil legs



36x96 shown with six 34-DFC duofoil legs

## Table/conference top Solid surface, no overlay

### General

- 1.1875" thick solid surface
- 2" flat knife profile around perimeter
- **Note:** Clamp on accessories will not work on 2" flat knife edge
- Specify bases separately
- For 30x30 and 36" dia. tops use use 34-TFP trifoil base
- Tops 42" and up require two sets of 34-DFC duofoil legs

### Soft square

- Sizes: 30x30, 42x42, 48x48, 54x54, 60x60
- 4" radius on corners

### Eased square

- Sizes: 30x30, 42x42, 48x48, 54x54, 60x60

### Round

- Diameters: 36", 42", 48", 54", 60"

### Soft square



Plan view



30x30 on 34-TFP trifoil base



42x42 shown on 34-DFC duofoil legs

### Eased square



Plan view



30x30 on 34-TFP trifoil base



42x42 shown on 34-DFC duofoil legs

### Round



Plan view



30" diam. on 34-TFP trifoil base



42" dia.. shown on 34-DFC duofoil legs

## Table/conference top Solid surface, no overlay continued

### General

- 1.1875" thick solid surface
- Veneer subtop with flat edge inset 1.5" around perimeter
- Specify bases separately
- 72"w and 84"w tops require two sets of duofoil legs
- 96"w and 108"w tops require three sets of duofoil legs

### Eased rectangle

- Widths: 72"w, 84"w, 96wW, 108"w
- Depths: 36"d or 42"d
- For grommet or power supply cutout, specify VTC model

### Soft rectangle

- Widths: 72"w, 84"w, 96"w, 108"w
- Depths: 36"d or 42"d

### Eased rectangle



Plan view



36x72 shown with four 34-DFC duofoil legs



36x96 shown with six 34-DFC duofoil legs

### Soft rectangle



Plan view



36x72 shown with four 34-DFC duofoil legs



36x96 shown with six 34-DFC duofoil legs

## Table/conference top Solid surface with overlay

### General

- 1.1875" thick veneer subtop with 0.5" solid surface overlay, 1.6875" total thickness
- Specify bases separately
- For 30x30 and 36" dia. tops use use 34-TFP trifoil base
- Tops 42" and up require two sets of 34-DFC duofoil legs

### Soft square

- Sizes: 30x30, 42x42, 48x48, 54x54, 60x60
- 4" radius on corners

### Eased square

- Sizes: 30x30, 42x42, 48x48, 54x54, 60x60

### Round

- Diameters: 36", 42", 48", 54", 60"

### Soft square



Plan view



30x30 on 34-TFP trifoil base



42x42 shown on 34-DFC duofoil legs

### Eased square



Plan view



30x30 on 34-TFP trifoil base



42x42 shown on 34-DFC duofoil legs

### Round



Plan view



30" diam. on 34-TFP trifoil base



42" dia.. shown on 34-DFC duofoil legs

## Table/conference top Solid surface, with overlay continued

### General

- 1.1875" thick veneer subtop with 0.5" solid surface overlay, 1.6875" total thickness
- Specify bases separately
- 72"w and 84"w tops require two sets of duofoil legs
- 96"w and 108"w tops require three sets of duofoil legs

### Soft rectangle

- Widths: 72"w, 84"w, 96"w, 108"w
- Depths: 36"d or 42"d

### Soft rectangle



Plan view



36x72 shown with four 34-DFC duofoil legs



36x96 shown with six 34-DFC duofoil legs

## Benching Fixed height bases

### General

- Low height base and cabinets include fixed duofoil standoffs
- Includes cutout for mounting cross rail
- Removable access panel

### End cabinet, open shelf back

- 60"w x 18"d x 22.25"h
- One adjustable and one stationary shelf per section
- Option to pre bore holes for privacy screen. Mounts centered on 60"d and offset 3" from open shelf side

### Panel base

- Widths: 30"w or 60"w
- 6"d x 22.25"h
- Use at end of runs

### Panel base



30"w



60"w

### End cabinet

open shelf back



Exterior side



Interior side

## Benching Fixed height bases, continued

### General

- Low height base and cabinets include fixed duofoil standoffs
- Includes cutout for mounting cross rail
- Removable access panel

### End cabinet, open end shelves

- Depths: 18"d or 30"d
- 60"w x 22.25"h
- Unfinished back. Optional finished back on 18"d only
- One adjustable and one stationary shelf per section
- Option to pre bore holes for privacy screen. 18"d mounts centered on 60"d and offset 3" from open shelf side. 30"d mounts centered on length and depth

### Middle cabinet, open end shelves

- Depths: 18"d or 30"d
- 60"w x 22.25"h
- One adjustable and one stationary shelf per section, on both sides. Center divider panel
- Option to pre bore holes for privacy screen on 30"d cabinet. Mounts centered on length and depth

### End cabinet

open end shelves



18"d



30"d

### Middle cabinet

open end shelves



18"d



30"d



## Benching Fixed height worksurfaces

### General

- Depth: 30"
- Widths: 54"w, 60"w, 66"w, 83"w
- 1.1875" thick veneer or solid surface worksurfaces
- Worksurface shapes available as rectangle or soft rectangle
- Solid surface table maximum weight allowance is 100 lbs
- Use with open plan fixed bases

### Rectangle

- 2" flat knife profile on users side
- **Note:** Clamp on accessories will not work on 2" flat knife profile

### Soft rectangle

- 2" flat knife profile around perimeter
- 4" radius on corners
- **Note:** Clamp on accessories will not work on 2" flat knife profile

### Rectangle



Veneer



Solid surface

### Soft rectangle



Veneer



Solid surface

## Benching Height adjustable bases

### General

- Height adjustable control, switch and cables specified with height adjustable worksurface
- Low height base and cabinets include height adjustable columns
- Includes cutout for mounting cross rail
- Removable access panel

### Panel base

- Widths: 30"w or 60"w
- 6"d x 22.25"h
- Use at end of runs

### End cabinet, open shelf back

- Widths: 30"w or 60"w
- 18"d x 22.25"h
- One adjustable and one stationary shelf per section
- Option to pre bore holes for privacy screen on 60"w end cabinet. Mounts centered on 60"d and offset 3" from open shelf side

### End cabinet, unfinished back

- Depths: 18"d or 30"d
- 60"w x 22.25"h
- Unfinished back. Optional finished back on 18"d only

### Panel base



30"w



60"w

### End cabinet

open shelf back



30"w  
exterior side



30"w  
interior side



60"w  
exterior side



60"w  
interior side

### End cabinet

unfinished back



18"d



30"d



Optional finished back for  
18"d only

## Benching Height adjustable bases, continued

### General

- Height adjustable control, switch and cables specified with height adjustable worksurface
- Low height base and cabinets include height adjustable columns
- Includes cutout for mounting cross rail
- Removable access panel

### End cabinet, open end shelves

- Depths: 18"d or 30"d
- 60"w x 22.25"h
- Unfinished back. Optional finished back on 18"d only
- One adjustable and one stationary shelf per section
- Option to pre bore holes for privacy screen. 18"d mounts centered on 60"d and offset 3" from open shelf side. 30"d mounts centered on length and depth

### Middle cabinet

- Depths: 18"d or 30"d
- 30"w x 22.25"h
- One adjustable and one stationary shelf per section, on both sides. Center divider panel

### Middle cabinet, open end shelves

- Depths: 18"d or 30"d
- 60"w x 22.25"h
- One adjustable and one stationary shelf per section, on both sides. Center divider panel
- Option to pre bore holes for privacy screen on 30"d cabinet. Mounts centered on length and depth

### End cabinet

open end shelves



18"d



30"d

### Middle cabinet



18"d



30"d

### Middle cabinet

open end shelves



18"d



30"d

## Benching Height adjustable worksurfaces

### General

- Depth: 30"
- Widths: 54"w, 60"w, 66"w, 83"w
- 1.1875" thick veneer or solid surface worksurfaces
- Height adjustable control, switch and cables included with height adjustable worksurfaces
- Worksurface shapes available as rectangle or soft rectangle
- Table maximum weight allowance is 100 lbs
- Use with open plan height adjustable bases

### Rectangle

- 2" flat knife profile on users side
- **Note:** Clamp on accessories will not work on 2" flat knife profile

### Soft rectangle

- 2" flat knife profile around perimeter
- 4" radius on corners
- **Note:** Clamp on accessories will not work on 2" flat knife profile

### Rectangle



Veneer



Solid surface

### Soft rectangle



Veneer



Solid surface

## Benching Height adjustable manager desk

- Sweep top manager desk, handed left or right
- Desk sizes: 68x60 (66x58 actual surface size) or 74x60 (72x58 actual surface size)
- 2" flat knife profile around perimeter
- Column base standard for runoff support, optional panel base
- Fixed height duofoil standoffs opposite of desk, use with fixed height worksurfaces (specified separately)
- 60"w x 30"d low height cabinet, long grain on cabinet top
- One adjustable and one stationary shelf centered on height adjustable side
- Finished back on fixed height standoff side
- 1.1875" thick veneer or solid surface worksurfaces
- Height adjustable control, switch and cables included with height adjustable worksurfaces
- Table maximum weight allowance is 100 lbs
- Removable access panels each side
- Field installed grommet recommended for wire management
- **Note:** Clamp on accessories will not work on 2" flat knife profile

Veneer



Solid surface



Plan view



68x60



74x60

## Benching Cross rails

### General

- Use with open plan fixed height and height adjustable bases
- Supports power, privacy screens and cable baskets
- Option to pre bore holes for privacy panels
- 6"d x 1.75"h
- Widths:
  - 44"w (use with 54"w worksurfaces)
  - 50"w (use with 60"w worksurfaces)
  - 56"w (use with 66"w worksurfaces)
  - 62"w (use with 72"w worksurfaces)

### Basic power

- 3 + 1 wire configuration
- One power block assembly included, does not include duplex receptacles or infeeds
- Four outlets each user
- UL listed components

### Premium power

- Includes same items as basic power cross rail
- Silver powder coat face plates cover power block assembly

### Chicago power

- One power block assembly with outlet boxes and face plates
- Receptacles not included
- Hard wired on site

### Cross rail wire management

- Attaches to underside of cross rail
- Cable basket:
  - 32"w (use with 54"w and 60"w cross rails)
  - 44"w (use with 66"w and 72"w cross rails)
- PET basket:
  - 32"w (use with 54"w and 60"w cross rails)
  - 44"w (use with 66"w and 72"w cross rails)

### No power



### Basic power



### Premium power



### Chicago power



## Benching storage Shared floor storage

### General

- 22.25" h low height storage
- Includes 0.75" thick top
- All shelving sections feature one stationary and one adjustable shelf

### Open storage, alternating

- Yin yang storage configuration
- Depth: 18" d
- Widths: 30" w, 36" w, 42" w, 48" w

### Open storage, back to back

- Shelving on each side, center divider along width
- Depth: 30" d
- Widths: 30" w, 36" w, 42" w, 48" w, 54" w, 60" w
- 42" w features 12" w and 30" w open shelving
- 48" w features 18" w and 30" w open shelving
- 54" w features 18" w and 36" w open shelving
- 60" w features 30" w and 30" w open shelving

### Open storage

alternating



30" w shown



60" w shown

### Open storage

back to back



30" w shown



Reference for 42" w-54" w



60" w shown

## Benching storage Shared floor storage, continued

### General

- 22.25" h low height back to back storage
- Depth: 30" d
- Includes 0.75" thick top
- All shelving sections feature one stationary and one adjustable shelf

### Box/lateral

- One box drawer and one lateral file drawer on each side, center divider along width
- Widths: 30" w and 36" w

### Box/file and box/lateral file

- Box/file and box/lateral drawer on each side, center divider along width. Not handed
- 42" w features 12" w and 30" w open shelving
- 48" w features 18" w and 30" w open shelving
- 54" w features 18" w and 36" w open shelving

### Open with box/file

- Open shelving and one box/file drawer on each side, center divider along width. Not handed
- 30" w features 15" w box/file and 15" w open shelf
- 36" w features 18" w box/file and 18" w open shelf
- 42" w features 12" w box/file and 30" w open shelf
- 48" w features 18" w box/file and 30" w open shelf
- 54" w features 18" w box/file and 36" w open shelf

### Open with box/lateral file

- Open shelving and one box/file drawer on each side, center divider along width. Not handed
- 42" w features 12" w box/ lateral and 30" w open shelf
- 48" w features 18" w box/lateral and 30" w open shelf
- 54" w features 18" w box/lateral and 36" w open shelf
- 60" w features 30" w box/lateral and 30" w open shelf

### Box/lateral file



Reference for 30" w and 36" w

### Box/file and box/lateral file



Reference for 42" w-54" w

### Open with box/file



Reference for 30" w and 36" w



Reference for 42" w-54" w

### Open with box/lateral file



Reference for 42" w-54" w



## Benching storage Towers

### General

- Double sided cabinet
- 30" planning depth

### Privacy height

- Widths: 12"w, 18"w, 24"w
- 27.5"d x 42"h
- Open tower:
  - Two adjustable 1" thick shelves with beveled edges and one fixed shelf, each side
- Hinged door tower:
  - Coat hook standard, each side
  - Optional two adjustable 1" thick shelves with beveled edges and one fixed shelf, each coat hooks section

### Tall height

- Widths: 12"w, 18"w, 24"w
- 27.5"d x 68.25"h
- Open tower:
  - Four adjustable 1" thick shelves with beveled edges and two fixed shelves, each side
- Hinged door tower:
  - Coat hook standard, each side
  - Optional four adjustable 1" thick shelves with beveled edges and one fixed shelf, each side
- Open/hinged door tower:
  - Coat hook behind hinged door, each side
  - 10.875"w three adjustable 1" thick shelves with beveled edges and two fixed shelves next to door, each side
  - Optional three adjustable shelves with and two fixed shelves in coat hook section, each side

### Privacy height



Open shelving



Hinged door

### Tall height



Open shelving



Hinged door



Open/hinged door

## Benching accessories Cushions and privacy screens

### Floor storage cushions

- 14x14, 29x14, 35x14, 29x29 and 35x29
- Height: 1.75"h
- 14"d used with 18"d applications, 29"d used with 30"d applications
- Option to attach to low height storage with industrial hook and loop, or movable
- Field installed

### Privacy screens

- Use on low height fixed or height adjustable cabinet bases and cross rails
- Widths: 38"w, 44"w, 50"w, 56"w
- Depth: 1.44"d
- Heights: 19.5"h (for 42"h applications) and 25.5"h (for 48"h applications)
- Fabric or veneer panel. Fabric is tackable, vertical grain veneer panel
- Field installed, includes surface mounting post brackets
- Requires drilling two pilot holes in cabinet top for installation

### Floor storage cushions



14x14



Reference for 29x14 and 35x14



29x29



35x29

### Privacy screen



Fabric  
for 42" applications



Fabric  
for 48" applications



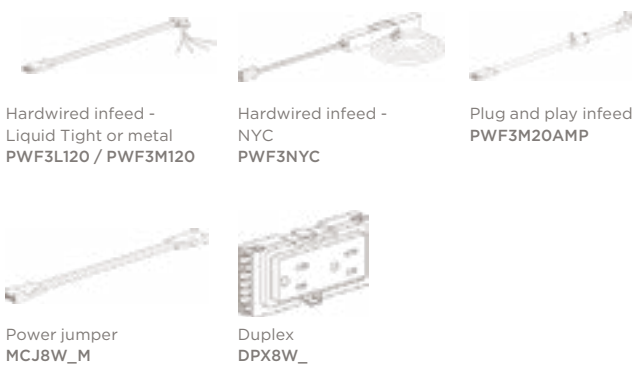
Veneer  
for 42" applications



Veneer  
for 48" applications

## Benching Electrical

- Infeed options include: liquid tight, metal, NYC code, plug and play, and title 24, liquid and metal infeeds are 10' long, NYC code and plug and play infeeds are 6' long
- **Note:** Plug and play infeed limits system, must use all circuit I duplexes
- Duplexes available in circuit I, II, III and IV. Separate model numbers for PWF4M120N infeeds. 15 AMP
- Jumpers: Use MCJ8W48M for 18" cabinets, and MCJ8W60M for 30" cabinets



## Data

- While most end users may prefer to supply their own data items, OFS does offer the below data solutions, coordinate with your end user to determine the best scenario for their needs
- Data module box can be mounted anywhere underneath the surface, includes two adapter ports, and adapter kit for jacks and couplers
- Standard inserts available are RJ-11 voice hard wire jack and RJ-45 voice and data hard wire jack, all other jack options to be sourced separately



## Power supplies

### Max

- Free place power to any surface
- Solid ash housing, four cord finishes
- 10' woven cord with leather strap. 45° grounded flat plug for flush wall mounting
- 15 amp 125 volt 1875 watt
- Three grounded power outlets
- Desktop, wall, or vertical mount

### Mya

- Free place power to any surface
- Solid ash housing, four cord finishes
- Powder coated steel base
- 10' woven cord with leather strap. 45° grounded flat plug for flush wall mounting
- 15 amp 125 volt 1875 watt
- Three grounded power outlets

### Misc power

- PS-77: (6) outlet surge protector, 10' power cord
- PS-100: (1) Outlet, (1) USB-A charging port, (1) USB-C charging port, 9' braided power cord
- WC-2: Wireless charging, single or multi unit, field installed

### Max



Power strip  
PS-3AC

### Mya



Power strip with base  
PS-3ACS

### Misc power



Undersurface  
PS-77



Set on power  
PS-100



Set on power  
WC-2

## Lighting

### Tilly

- 6" diameter table top base or clamp mount. **Note:** Clamps to worksurfaces 0.5"-1.25" thick
- Single or double arm
- Powder coated aluminum
- Brightness dimming
- 3' silver cord and 9' black 18 watt wall transformer
- Automatic shutoff after 10 hours
- Optional USB

### JoJo

- Pendant lamp
- Powder coated aluminum shade
- Opal glass diffuser
- 10' cord
- Full range dimming with wireless control

### Ella

- Two heights: freestanding floor lamp or surface mounted
- Frosted acrylic diffuser
- Powder coated aluminum/steel
- Brightness dimming
- 11' cord
- Automatic shutoff after 10 hours
- Optional 2 amp USB-A charging ports (surface mount only)
- **Note:** Surface mount requires a 3.5" diameter hole and mounts to a surface that is .935" to 1.185" thick

### Tilly



Double arm  
table top base

### Ella



Floor lamp

### JoJo



Pendant lamp

## Work accessories

### Coop

- 13.5"w x 9.5"d x 7.5"h
- Powder coated aluminum
- Solid white oak handle
- Divided storage compartments

### Skid

- 3.5"w x 8.5"d x 3"h
- Powder coated steel base and pencil cup
- Integrated solid white oak tray

### Prio

- Nesting storage vessels. 3 piece set in two finish palettes: Neutral and Earth
- 2.5"w x 2.5"d
- Heights: 3", 4.13" and 5.25"h all included
- Powder coated aluminum and thermoplastic
- Removable rubber bottoms for water resistance and easy cleaning

### Porter

- Formed aluminum planter
- Width: 15"
- Heights: 17"h, 25"h. and 35"h
- Depths: 15"d and 30"d
- Height adjustable inner-tray accepts standard liners
- Ships flat packed
- No tools necessary for assembly
- Plastic liner included

### Duke

- 1.75"w x 1.5"d x 3.25"h
- Solid ash
- Metal stud and plastic wall anchor for mounting

### Coop



LCA-DC1

### Skid



LCA-DT01

### Prio



LCA-NSV1  
Earth shown

### Porter



LCA-PL15\_\_\_\_\_

### Duke



LCA-WH1

## Work accessories Continued

### Keyboard trays

- Keyboard arm KBA-1 and Wood Tray WKT to be used together
- Keyboard arm KBA-2: Arm assembly with built in clamps, no additional tray needed
- Keyboard KBA-3 features integrated keyboard and mouse tray
- Wood keyboard tray WK/S: extendable tray

### Monitor arms

- Monitor arm MA-1 (single) and MA-1D (double), clamp on

### Sit to stand

- Sit to stand monitor/keyboard arm, available with single or double monitor arm
- Desktop sit to stand workstation integrated keyboard tray, space for two monitors, available in white finish

### Storage add ons

- PET pencil tray insert. Grey PET divided pencil tray. Use DA18-1 in 15" w box drawer pedestal. Use DA14-1 in 18" w box drawer pedestals
- Pencil drawer: black molded plastic, flush mount
- Center drawer with integrated pencil tray mounts to underside of surface. Not compatible with tables that use straighteners or troughs
  - OCD: Use with single, double pedestal desks or peninsula tops with no modesty
  - OCD1: Use with peninsula tops with a modesty

### Misc items

- CPU Holder: mounts to underside of surface

### Keyboard trays



Keyboard arm  
KBA-1



Wood tray  
WKT



Keyboard arm  
KBA-2



Keyboard tray  
KBA-3



Wood keyboard tray  
WK/S

### Monitor arms



Single arm  
MA-1



Double arm  
MA-1D

### Sit to stand



Monitor/keyboard arm  
single arm shown  
MKA-1S\_



Workstation  
SSW-1W

### Storage add ons



Pencil tray  
DA18-1 / DA14-1



Pencil drawer  
PD-1



Center drawer  
OCD/OCD1

### Misc items



CPU holder  
CPUH-1

## Wire management

- Velcro wire manager strip comes in pack of four, not intended for heavy duty cabling
- Cable management clip, mounts to underside of surface, three positions, not intended for heavy duty cabling
- Wire management cord stay comes as a set of two, and can manage cords ¼" diameter along any TFL or veneer item
- Plastic, wire basket, trough and PET wire manager are used to manage user cords horizontally along underside of surface
- Fabric wire manager and table to table connection are commonly used to manage wires that span from a height adjustable surface to a fixed height surface
- Adjustable height wire manager commonly used in stand alone height adjustable table applications



Velcro wire manager  
**WM-V4**



Cable management  
undersurface clip  
**CM30-NR**



Cord stay  
**WMCS**



Plastic wire manager  
**WM2-\_\_**



Wire basket manager  
**WBT-\_\_H**



Wire management trough  
**WMT-\_\_**



PET wire manager  
**WM-P\_\_**



Fabric wire manager  
**WM-HA6**



Height adjustable  
table desk manager  
**WM-HA**



Height adjustable  
table to table manager  
**WM-HA\_**