

Coact building blocks

---





## Table of contents

Family	3
Modular lounge	3 - 9
Booth	10 - 14
Benches	15 - 16
Table benches	17 - 18
Media units	19
Back media units	20 - 23
Corner media units	24 - 25
Tables for media units	26 - 29



## Family

- Modular Lounge
- Booths
- Benches & tables
- Media units
- Coact lite

## Lounge

- Available in variety of sizes with modular options
- All modular units available in mid or high back
- Both arms, single arms, or no arms available in 3 heights
- Back shelf options are available on modular units
- Three leg styles available in metal and/or wood
- Ganging available

## Shapes

- All sizes shown in midback height



**Club chair**  
22.5"w x 26.75"d x 32.5"h



**Lounge**  
22.5"w x 28"d x 35.75"h



**Wide**  
30"w x 28"d x 35.75"h



**Loveseat**  
45"w x 28"d x 35.75"h



**Sofa**  
67.5"w x 28"d x 35.75"h



**Round corner**  
43"w x 43"d x 35.75"h



**Table corner**  
43"w x 43"d x 35.75"h

## Elevations

- Club chairs are always 32.5”h
- Mid back units are 35.75”h
- High back units are 49.75”h



Club



Mid



High

## Arms

- Arms are available on left, right, and left & right
- Arms have three heights, low, mid, and high
- Single upholstered models, arm will match upholstery
- MT Multiple textile models can have contrasting arms

## Configuration



Left



Right



Both

## Heights



Low



Mid



High  
Not available on mid back units



## Arms

### Tablet

- Tablet option available on low height arms
- Tablet finish is available in 3DL or veneer finishes
- The post is available in luster grey, polished, polar, or onyx
- Loveseat and sofa units can have left, right, or both locations
- Club and lounge size units can have a tablet on the left or right arm



## Power

- Power units are in the front apron of lounge, wide, loveseat, and sofa units
- 1 AC power outlet, 1 USB A, 1 USB C in module
- Power can come in white, silver, or black
- Lounge and wide have 1 unit
- Loveseat and sofa can have left, right, or both power locations



**Left**  
C6U  
SLV Silver finish

**Right**  
C6T  
WHT White finish

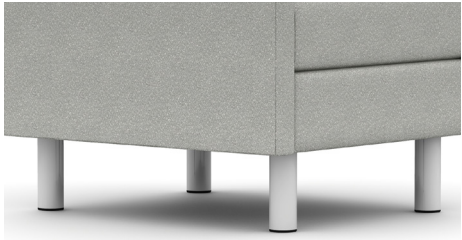
**Both left and right**  
C6V  
BLK Black finish

**Lounge/Wide Center power**  
BLK Black finish

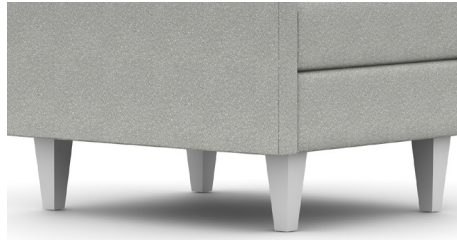


## Leg options

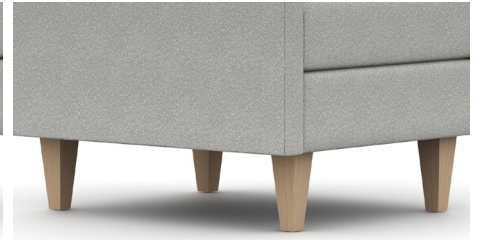
- Three leg options are available
- Wood legs available in standard wood leg veneers
- Metal legs available in polished chrome, onyx, luster gray, and polar



**Metal leg**  
H4N



**Tapered metal leg**  
H5X



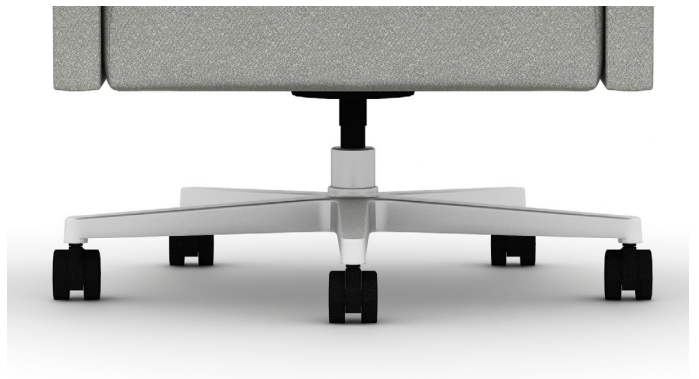
**Tapered wood leg**  
H4M

## Club chair leg options

- Each leg type comes in two different heights; lounge & dining
- Dining height legs adds 2" to the overall height of the chair



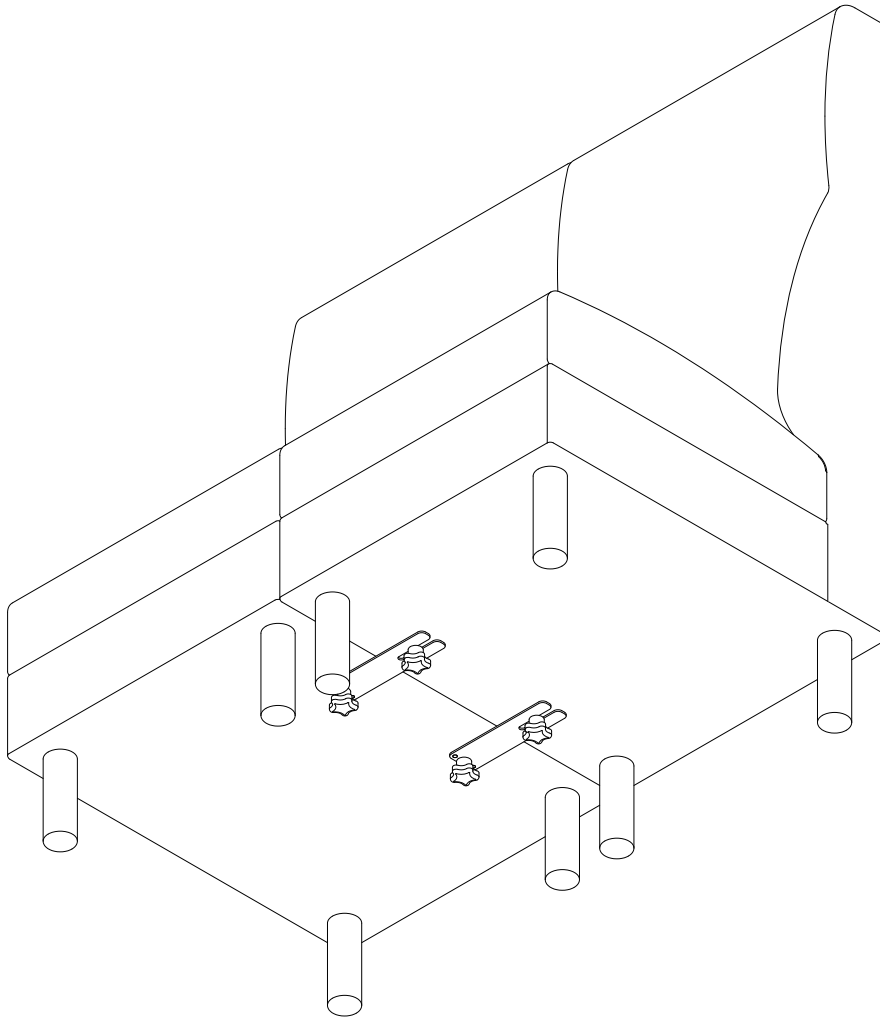
**4 Prong base**  
C6Z - POLR Polar



**5 Prong base**  
C7A - PAL Polished aluminum

## Ganging

- When placing units together, the ganging option must be specified to include the ganging bracket, which will send 2 ganging brackets per connection point



### C4- Ganging

Always ships 2 per connection



## Back shelf options

- The back shelf comes either desk or bar height
- The back shelf is available in TFL, HPL, veneer, and studio veneer
- All modular units have the option for a back shelf
- Shelf is 12" deep and 1" smaller width than unit
- Support brackets can come onyx, polar, luster grey, and polished



**Desk height shelf**  
Mid back lounge



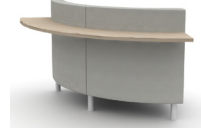
**Desk height shelf**  
Mid back wide



**Desk height shelf**  
Mid back loveseat



**Desk height shelf**  
Mid back sofa



**Desk height shelf**  
Mid back curve



**Desk height shelf**  
High back lounge



**Desk height shelf**  
High back wide



**Desk height shelf**  
High back loveseat



**Desk height shelf**  
High back sofa



**Desk height shelf**  
High back curve



**Bar height shelf**  
High back lounge



**Bar height shelf**  
High back wide



**Bar height shelf**  
High back loveseat



**Bar height shelf**  
High back sofa



**Bar height shelf**  
High back curve



### Square corner options

- The back top is available in 3DL or veneer
- Can have spill groove with 3DL finish
- Can have a PS-68 power unit
- Can come high or mid back height



Mid Back



Mid Back

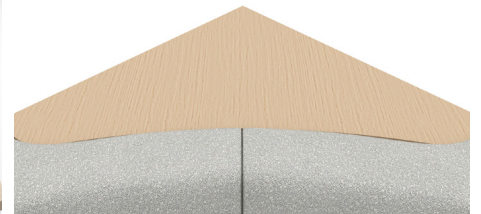
### Back surface



3DL



3DL spill groove



Veneer

### Power

- One 12 amp outlet, two 2.1 amp USB charging ports



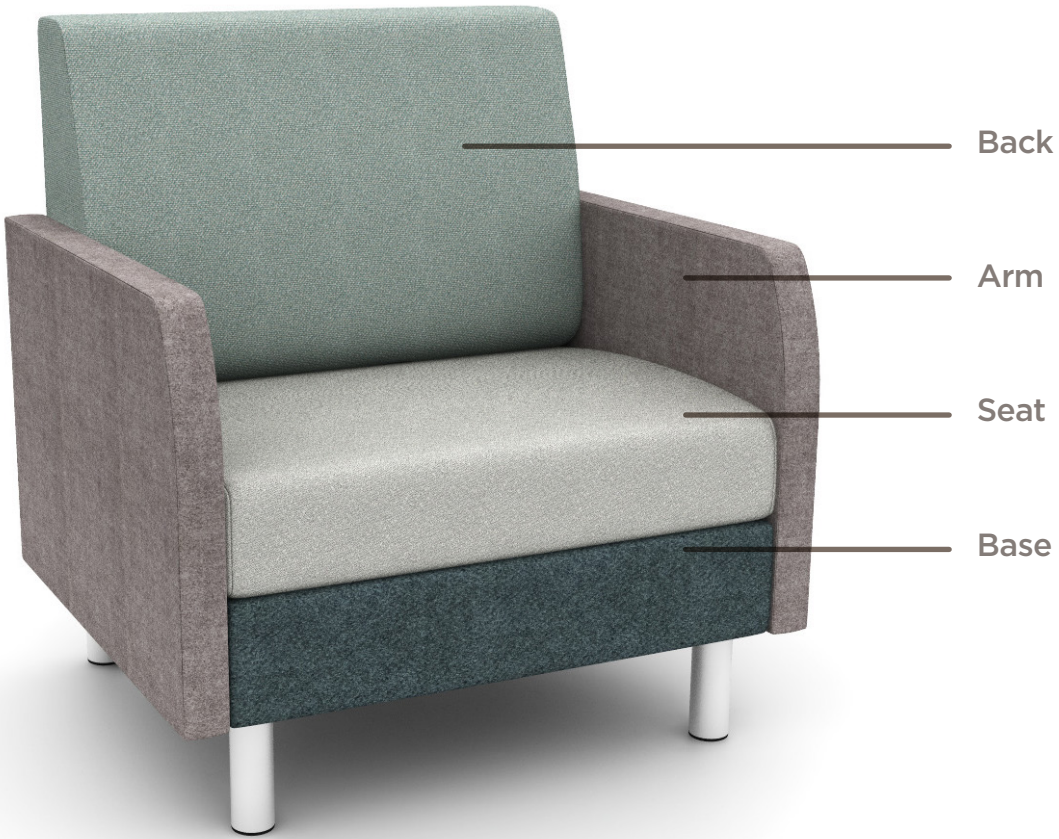
Silver



Black



## Multiple textiles options



## Booth Seating

- Booth seating comes in 3 widths, 2 corner units, and 2 heights
- Has double sided models for each width and height
- Plinth bases available for booth seating along with coact lounge base options
- Width units align with common table widths
- Same power options as Coact lounge
- Has tufted back option with limited upholstery options

## Sizes



**48"**  
78042-MBS/ 78042-HBS  
48"w x 24.25"d x 35.75"h/49.75"h high back



**60"**  
78142-MBS 78142-HBS  
60"w x 24.25"d x 35.75"h/49.75"h high back



**72"**  
78043-MBS/ 78043-HBS  
72"w x 24.25"d x 35.75"h/49.75"h high back



**48"**  
78042-MBD/ 78042-HBD  
48"w x 46.5"d x 35.75"h/49.75"h high back



**60"**  
78142-MBD/ 78142-HBD  
60"w x 46.5"d x 35.75"h/49.75"h high back



**72"**  
78043-MBD/ 78043-HBD  
72"w x 46.5"d x 35.75"h/49.75"h high back



**Rounded corner**  
78145-MBS/78145-HBS  
39.25"w x 39.25"d x 35.75"h/49.75"h high back



**Squared corner**  
78045-MBS/78045-HBS  
39.25"w x 39.25"d x 35.75"h/49.75"h high back

## Booth Seating

### Elevations

- Booth seating is available in mid height (35.75" h) and high height (49.75" h)



### Back tufting

- All mid back coact booth models can have tufted back
- Only approved materials can be applied to the back because of the tufting, click here to see list



**Booth Seating**

**Tufting**



**48"**  
78042-MBST  
48"w x 24.5"d x 35.75"h



**60"**  
78142-MBST  
60"w x 24.5"d x 35.75"h



**72"**  
78043-MBST  
72"w x 24.5"d x 35.75"h



**48"**  
78042-MBDT  
48"w x 46.5"d x 35.75"h



**60"**  
78142-MBDT  
60"w x 46.5"d x 35.75"h



**72"**  
78043-MBDT  
72"w x 46.5"d x 35.75"h



**Rounded corner**  
78145-MBST  
39.25"w x 39.25"d x 35.75"h

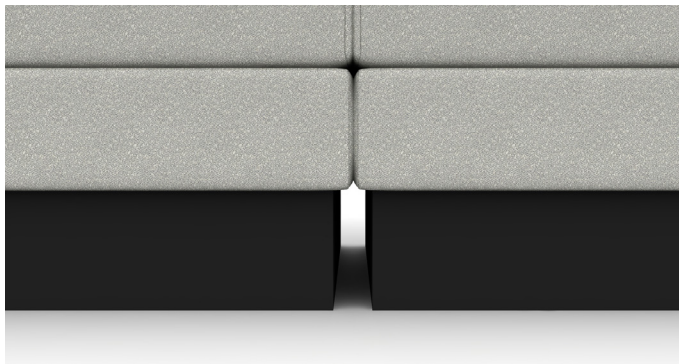


**Squared corner**  
78045-MBST  
39.25"w x 39.25"d x 35.75"h

## Booth Seating

### Plinth ganging base

- Plinth bases are inset 1.13" on either side of the unit
- When ganging you can select flush options to ensure there is no gap in the bases



**Normal plinth base**  
J5

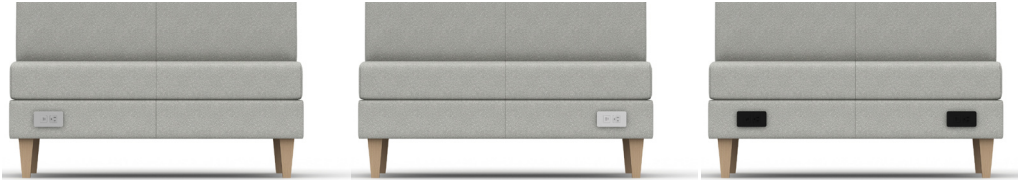


**Ganged plinth base**  
 PLGN - Ganging, default when ganging is selected  
 J5FL - Flush end right facing  
 J5FR - Flush end left facing  
 J5LR - Flush end left & right

## Booth Seating

### Power

- Power units are in the front apron of booth units
- 1 AC power outlet, 1 USB A, 1 USB C in module
- Power can come in white, silver, or black
- Units can have left, right, or both power locations



**Left**  
C6U  
SLV Silver finish

**Right**  
C6T  
WHT White finish

**Both left and right**  
C6V  
BLK Black finish

### Back surface on square corner units

- The back top is available in 3DL or veneer
- Can have spill groove with 3DL finish
- Can have a PS-68 power unit
- Can come high or mid back height



**3DL**

**3DL spill groove**

**Veneer**

### Power on back surface

- One 12 amp outlet, two 2.1 amp USB charging ports



**Silver**



**Black**

## Benches

- Benches are upholstered and have multiple upholstery option
- Legs are available in round metal, tapered metal, and tapered wood legs
- Power is available in the single, double, and triple units
- Bench units can gang together, and gang to lounge units

## Shapes



**Single bench**  
22.5"w x 28"d x 18"h



**Double bench**  
45"w x 28"d x 18"h



**Triple bench**  
67.5"w x 28"d x 18"h



**Round corner bench**  
43"w x 43"d x 18"h



**Quarter round bench**  
28"w x 28"d x 18"h



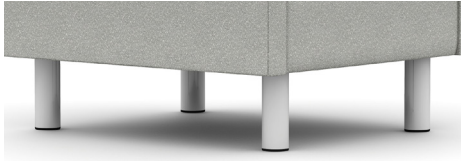
**Half round bench**  
56"w x 28"d x 18"h



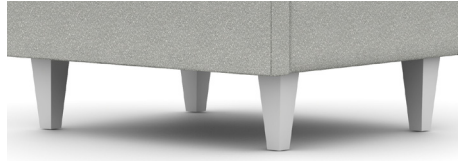


## Leg options

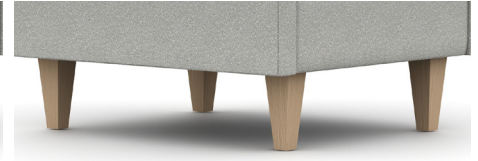
- Three leg options are available for Coact benches
- The wood legs are available in standard wood seating finishes
- Metal legs are available in polished chrome, polar, onyx, and luster grey



**Round metal post**  
H4N



**Square tapered metal**  
H5X



**Square tapered wood**  
H4M

## Power

- Power units are in the front apron of single, double, and triple units
- 1 AC power outlet, 1 USB A, 1 USB C in module
- Power can come in white, silver, or black
- Single widths have 1 unit
- Loveseat and sofa can have left, right, or both power locations



**Left**  
C6U  
SLV Silver finish



**Right**  
C6T  
WHT White finish



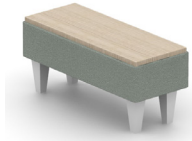
**Both left and right**  
C6V  
BLK Black finish



**Single Center power**  
BLK Black finish

## Table bench options

- The table bench options are available in solid color HPL, wood grain HPL, or veneer



**Slim**  
11.25"w x 28"d x 13"h



**Single**  
22.5"w x 28"d x 13"h



**Double**  
45"w x 28"d x 13"h



**Quarter round**  
28"w x 28"d x 13"h



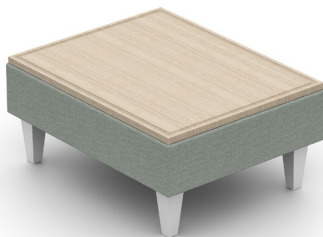
**Half round**  
56"w x 28"d x 13"h

## Table bench finish options

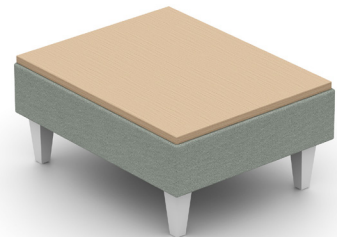
- 3DL available with spill groove



**3DL**



**3DL**  
With spill groove



**Veneer**



### Table bench power

- Table bench power is available in both the front of the units and the top
- The power unit on the front of the unit has 1 AC power outlet, 1 USB A, 1 USB C in module
- The power unit on the top of the unit is a PS-68 unit with 1 outlet and 2 USB-A units
- Front units can come silver, white, or black
- Top units can come black or silver

### Narrow and single shape



Front/Silver  
C6Y/SLV



Top/Silver  
C6X/SLV



Front/Silver  
C6Y/SLV



Top/Silver  
C6X/SLV

### Double shape



Front left/Silver  
C6U/SLV



Front right/Silver  
C6T/SLV



Front left & right/Silver  
C6V/SLV



Top left/silver  
C8Q/SLV



Top right/Silver  
C8P/SLV

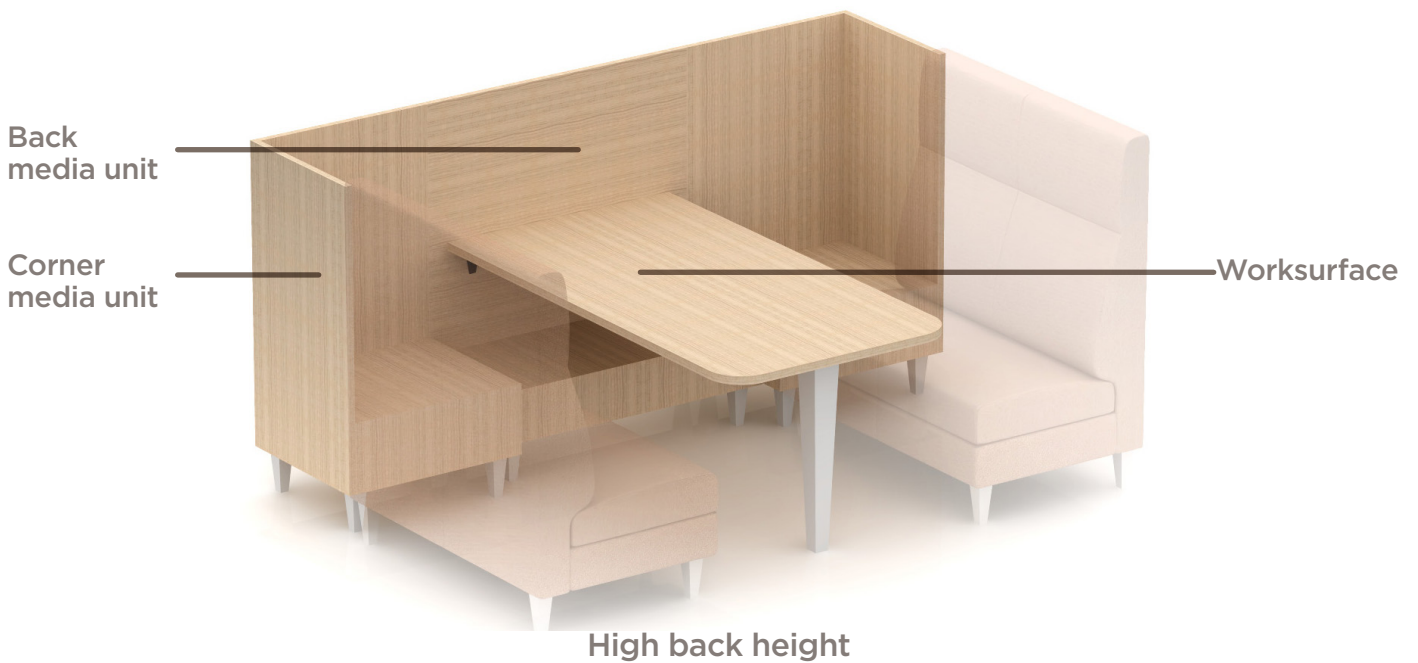
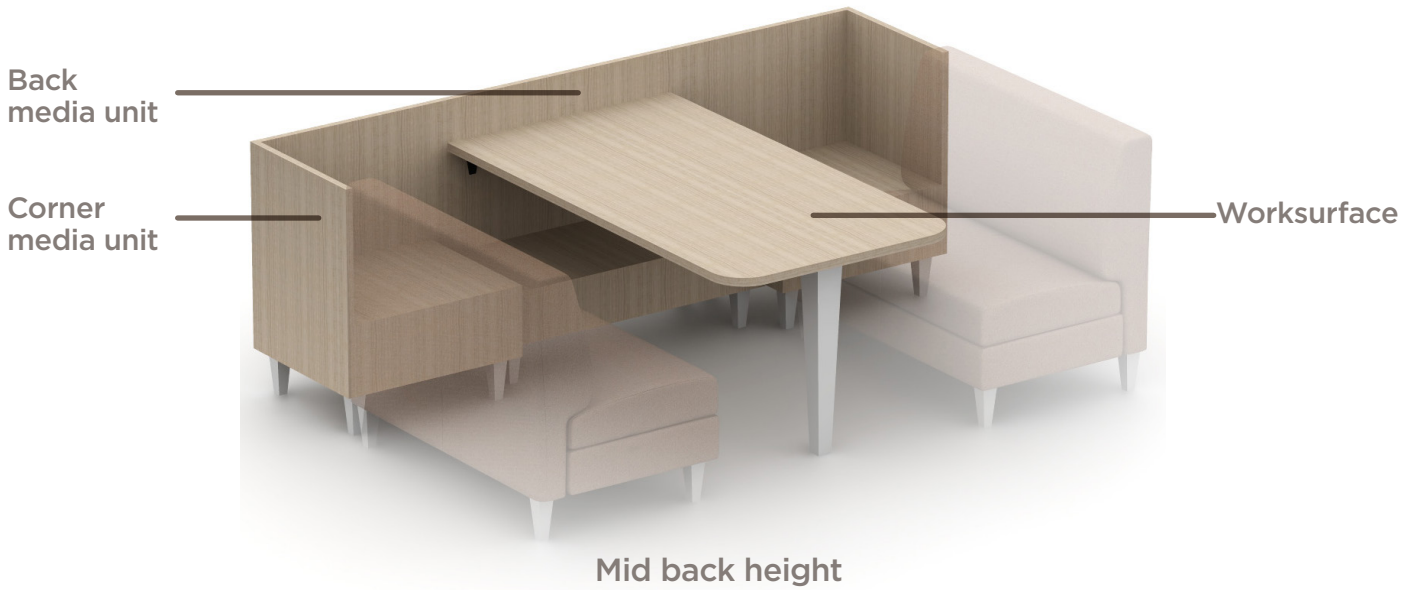


Top left & right/Silver  
C8R/SLV

**Coact media units**

**Components**

- Units are made up of back media units, corner media units, and worksurfaces
- All units available in mid and high back
- Corner media units have either an upholstered back or wood back in laminate or veneer
- Coact modular lounge units can be ganged to the corners to create a lounge meeting space
- Power & grommets available in corner and back units





## Back media units

- Back media units come in 2 heights: mid 35" & high 49"
- Units come in 2 widths: 42" & 54"
- All units have shelf and grommet options
- 42" wide units have a desk height table attached at 29"h
- Markerboards are available when using high height back media units, markerboard will be 34"w x 18.25"h

## Size & Elevation



**42"w x 19"d x 35"h**  
78-42MU-M



**42"w x 19"d x 49"h**  
78-42MU-H

## Glass markerboard option

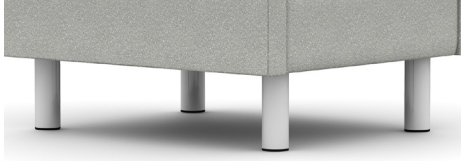
- Markerboards are available when using high height back media units
  - Markerboard is 34"w x 18.1875"h



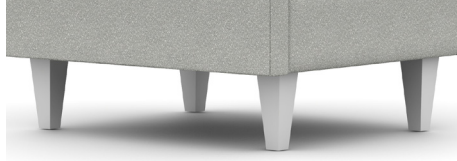
**34"w x 18.1875"**  
78-3418GB

## Leg options

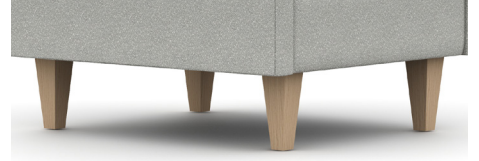
- Three leg options are available for coact media units
- The wood legs are available in standard wood seating finishes
- The metal legs are available in polished aluminum, onyx, polar, and luster grey



**Round metal post**  
H4N



**Square tapered metal**  
H5X



**Square tapered wood**  
H4M

## Storage options

- Storage can come in two configurations: no shelves, shelves
- 42" wide units have 19.5"w x 16"d x 4.75"h shelves
- Shelves can have an optional grommet that go through both shelves
- Grommet is 3.5" x 2.5"



**H4R - 42" wide**  
Shelf no grommet



**H4Q - 42" wide**  
Shelf with grommet

## Power options

- Power can be in the top or front of the units
- Top power units are PS-68 units available in black or silver with (1) 12 amp power slot and (2) USB A slots.
- Front power units are mini-taps consisting of (1) 12 amp power slot and (1) USB A & (1) USB C slots available in white, black, and silver



**H5B Left top**  
Black or silver



**H5C Right top**  
Black or silver



**H5D Left & right top**  
Black or silver



**C6U Left front**  
Black, white, or silver



**C6T Right front**  
Black, white, or silver



**C6V Left & right front**  
Black, white, or silver



**Black**



**Silver**



**White**



### Corner media units

- Corner media units come in 2 heights: mid 35" & high 49.75"
- Corner units come in left and right units
- Units can come with an upholstered back or wood back
- Units can come with power in the top and/or a grommet
- Units gang to center media units and modular lounge units

### Size & Elevation



**Mid back - Left facing**  
78-LMU-M  
27.25"w x 23"d x 35"h



**Mid back upholstered - Left facing**  
78261-MP  
27.5"w x 28"d x 35.75"h



**High back - Left facing**  
78-LMU-H  
27.25"w x 23"d x 49"h



**High back upholstered - Left facing**  
78261-MP  
28"w x 23.5"d x 49.75"h

### Leg options

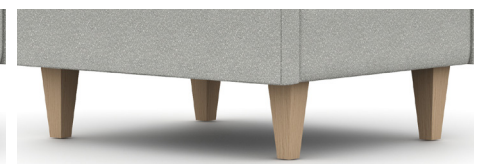
- Three leg options are available for coact media units
- The wood legs are available in standard wood seating finishes
- The metal legs are available in polished aluminum, onyx, polar, and luster grey



**Round metal post**  
H4N



**Square tapered metal**  
H5X



**Square tapered wood**  
H4M



Power options

- Optional top power units are PS-68 in black or silver with (1) 12 amp power slot and (2) USB A slots
- Corner grommet option available in silver and black
- Power options available on all corner media units



**Top power**  
Black BLK or silver SLV



**Top grommet**  
Black LJ or silver LK



**Top power & grommet**



**Top power**  
Black BLK or silver SLV



**Top grommet**  
Black LJ or silver LK



**Top power & grommet**

Table options

- Tables are available and can attach to the center media units
- Tables attaching to a 42" w unit will be at desk height 29" h and be 36" d
- Tables can have tapered wood legs
- Tables are either 66" or 78" long
- Tables can be laminate or veneer



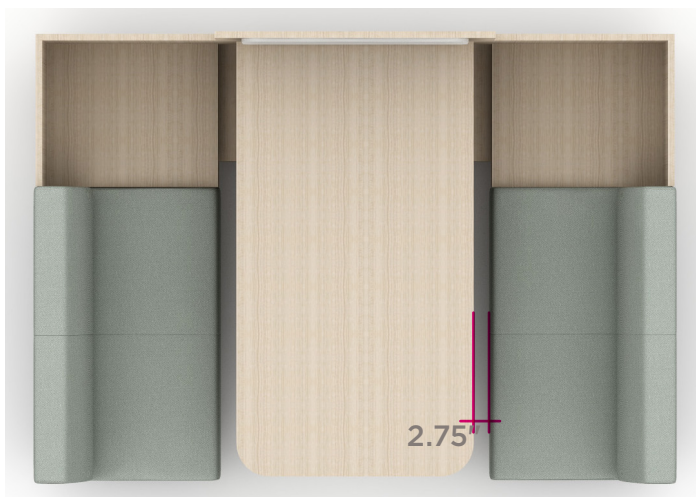
**36" w x 66" l**  
78-6636MCT



**36" w x 78" l**  
78-7836MCT

Table size and clearance

- 36" width tables will have 2.75" between the edge of the table and the edge of a lounge unit



**36" w x 66" l**  
78-6636MCT

### Leg options

- 29" high table can have a tapered wood leg



**Tapered wood leg**  
78-TW4-29

### Table options

- A grommet is available in the worksurface in Satin nickel or black
- Grommet has inside dimension of 2.9375" x 1.5" without insert and 1.5" x .75" with insert



**Satin Nickel**  
LK



**Black**  
LJ