



carolina
an OFS company

July 2021 Update

Effective July 5, 2021, OFS and Carolina will implement a price increase as outlined below. See online pricing tools for most up to date pricing.

4.5% increase on the OFS portfolio with exceptions below

- 2% increase on Agile, Applause, Genus, Impulse, Intermix, Kasura, Pulse, Range, Rein, Staks

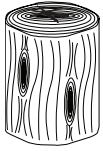
4.5% increase on the Carolina portfolio with exceptions below

- 2% increase on Knack, Logique, Mile Marker, Rein+, Reservoir, Theatre, X & O tables

SOLID WOOD TABLE STANDARD FEATURES

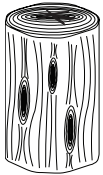
- Clear Finish (Super Matte)
- Diameter of Table will Vary
- Adjustable Levelers
- Asymmetrical Face and Bottom
- **NOTE:** Additional Natural Splitting Can Occur. This is a Natural Product. Each Log will be Unique in Appearance and Color may Vary.

END TABLE



model	w	d	h	wt	cu ft	list
DNR-16ET	12-14	12-14	16	35	3	\$ 908

END TABLE



model	w	d	h	wt	cu ft	list
DNR-20ET	12-14	12-14	20	44	4	\$ 952

OPTIONS

Species	Torched
WOAK White Oak	X9 None
SAFR Sassafras	TRCH Torched \$171
WLNT Walnut \$189	

HOW TO ORDER

SPECIFY: Species | torched.

MODEL NUMBER

DNR-16ET

Species	Torched
WOAK	X9