

ELEVEN WOOD

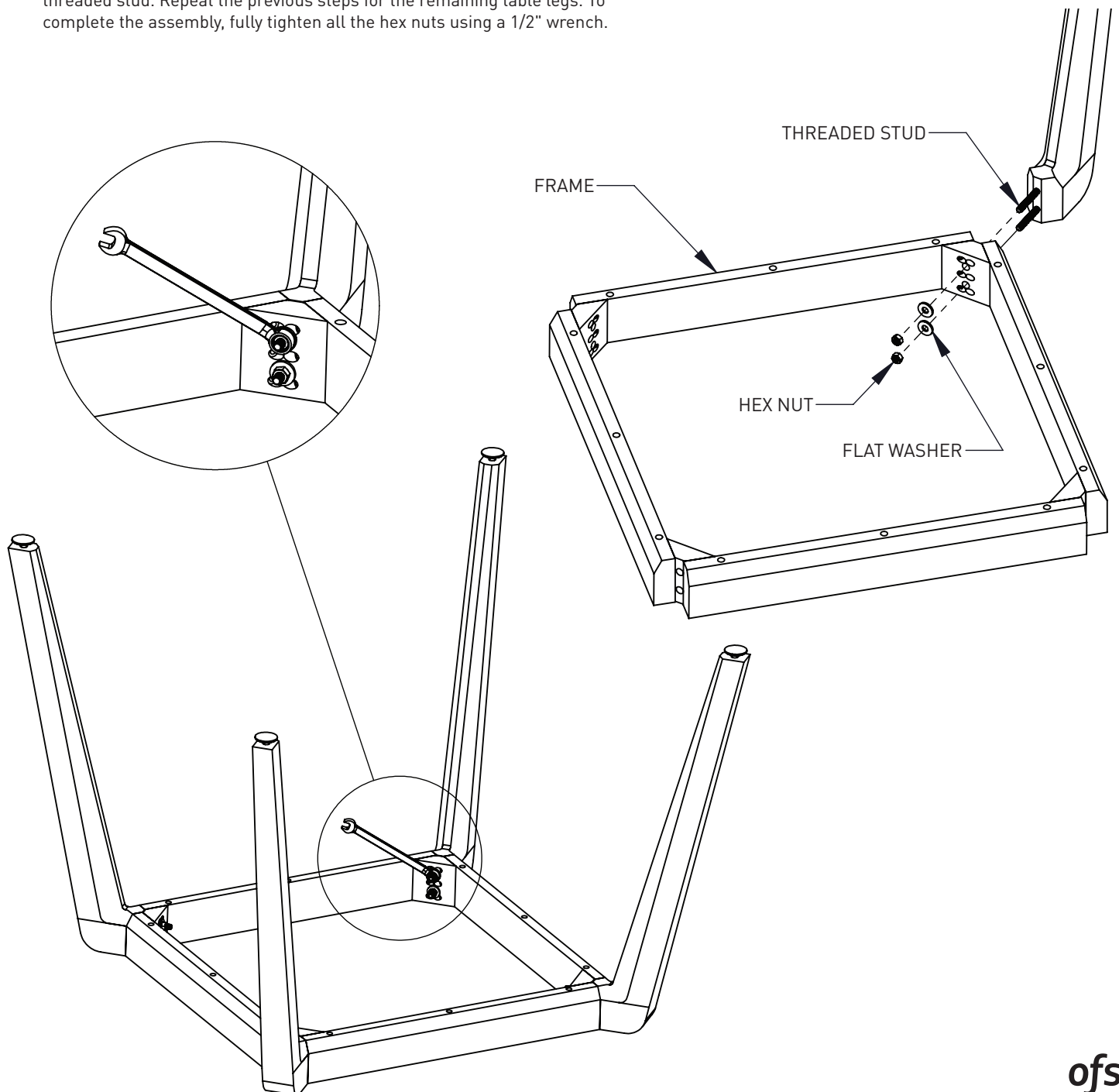
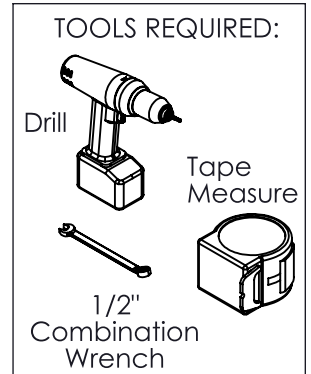
PART # 1609141

CORNER LEGS

INSTALLATION INSTRUCTIONS

NOTE: Views shown without the worksurface for clarity purposes.

1. Begin by removing the hex nuts and flat washers from the threaded studs on each of the table legs. Attach the leg to the frame assembly by inserting the threaded studs into the corresponding holes in the frame as shown in the view above.
2. Next, re-attach the flat washer and hand tighten the hex nut onto the threaded stud. Repeat the previous steps for the remaining table legs. To complete the assembly, fully tighten all the hex nuts using a 1/2" wrench.



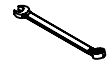
ofs

66" ROUND AND SQUARE TABLES (66RT & 66SQT)

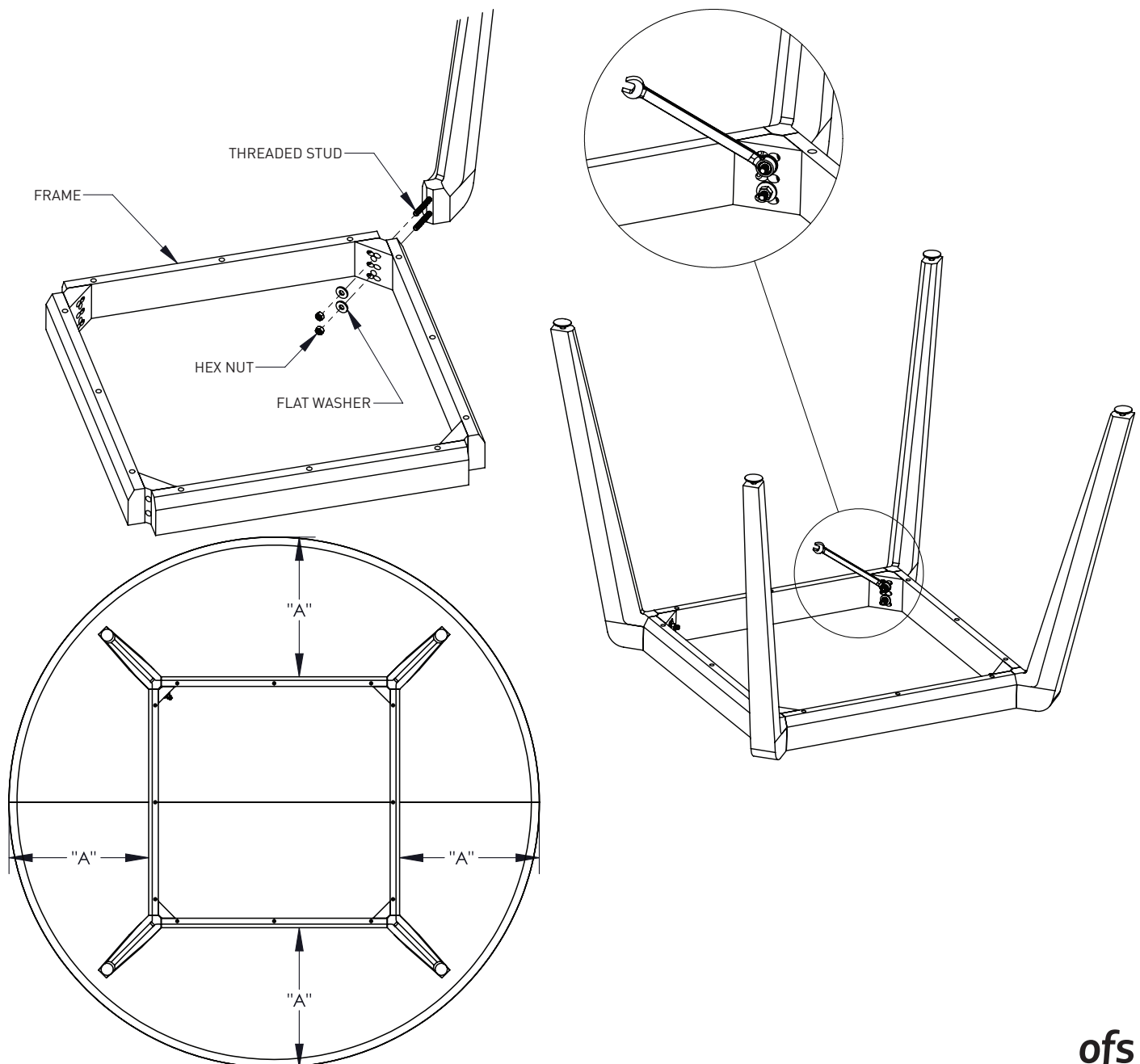
INSTALLATION INSTRUCTIONS

1. Begin by removing the hex nuts and flat washers from the threaded studs on each of the table legs. Attach the leg to the frame assembly by inserting the threaded studs into the corresponding holes in the frame as shown in the view in the upper right corner.
2. Next, re-attach the flat washer and hand tighten the hex nut onto the threaded stud. Repeat the previous steps for the remaining table legs. To complete the assembly, fully tighten all the hex nuts using a 1/2" wrench.
3. Once the frame has been fully assembled, place the frame onto the bottom of the worksurface. Position the frame so that it is completely centered onto the worksurface, making sure that "dimension A" is the same value on all four sides. Secure the frame to the worksurface by fastening the supplied screws through the mounting holes in the frame and into the worksurface.

TOOLS REQUIRED:



1/2"
Combination
Wrench

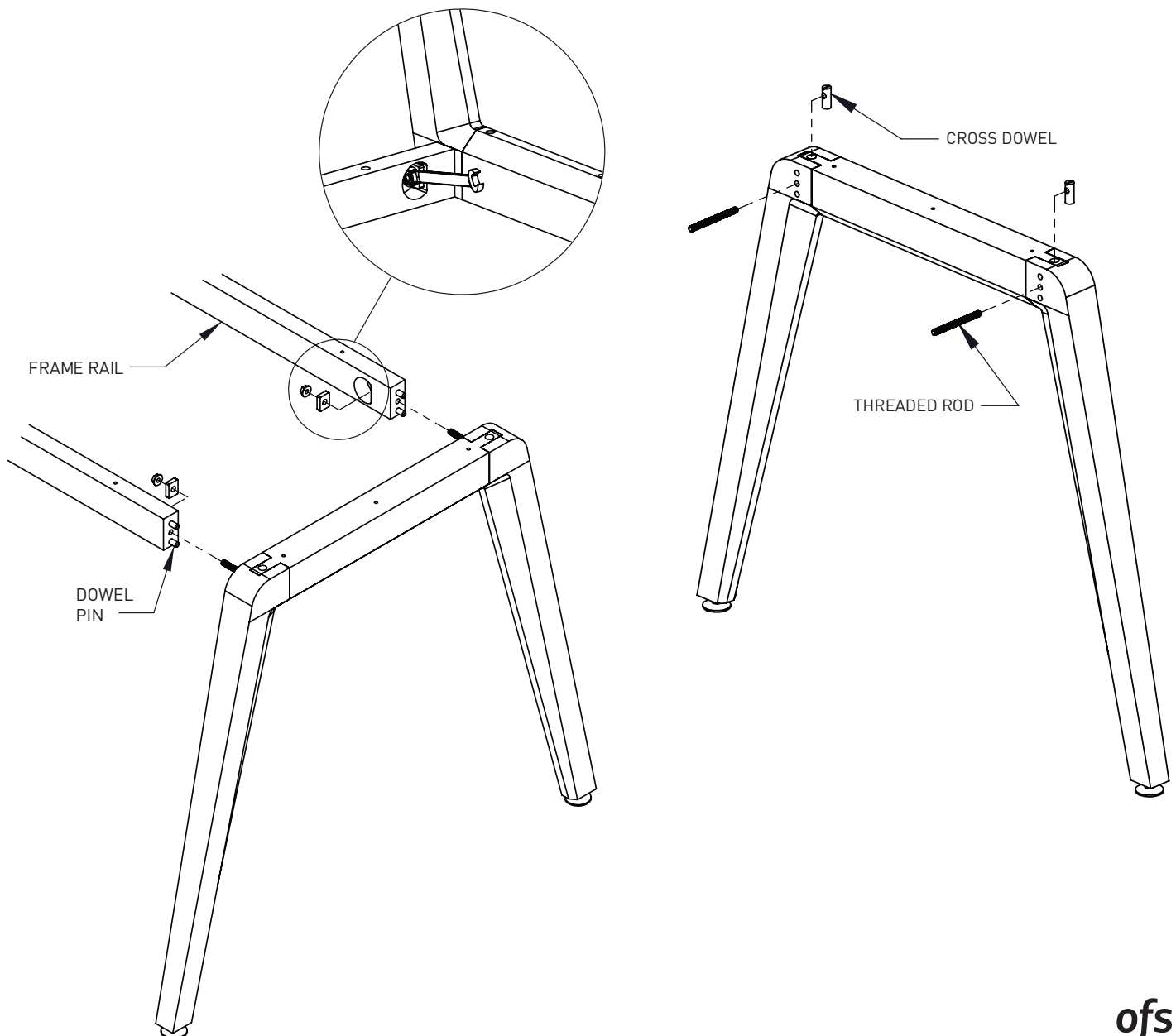
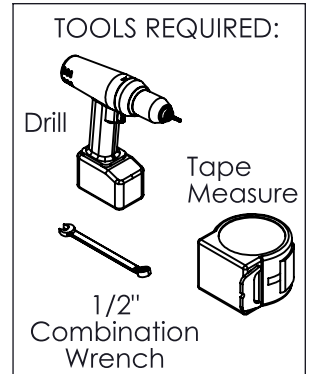


END LEG

INSTALLATION INSTRUCTIONS

NOTE: If your table has intermediate legs, they should be assembled prior to installing the end legs.

1. Begin by locating the large diameter hole on top of the end legs. Next, drop the threaded cross dowel into the hole, making sure the slotted end is facing up. Then insert the threaded rods into the clearance hole in the leg and fasten it halfway into the cross dowel.
2. Next, attach the legs to the frame rails making sure the holes in the leg align with the dowel pins in the frame rail and that the threaded rod in the leg can be inserted into the frame rail. Locate the "D" shape pockets inside the frame rails and attach the rectangular washer, followed by the flange nut. Tighten the nut using a 1/2" wrench.
3. The frame is now fully assembled and can be mounted to the worksurface. Verify the frame is centered completely and fasten it to the worksurface using the supplied screws.



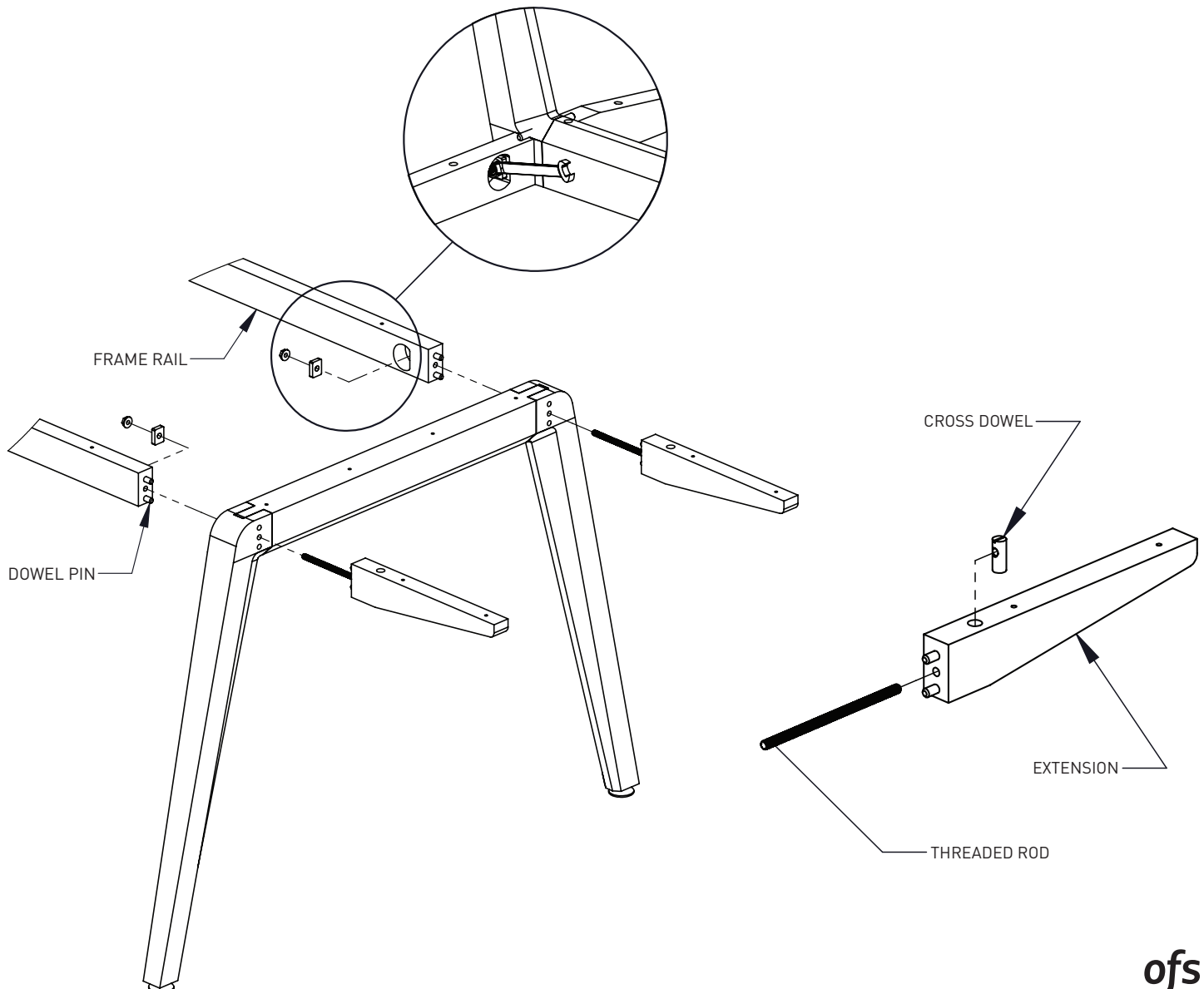
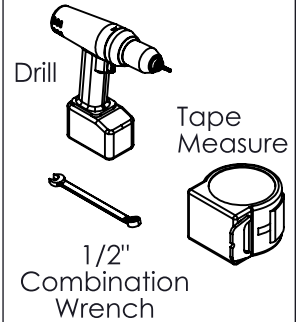
END LEG WITH EXTENSIONS

INSTALLATION INSTRUCTIONS

NOTE: If your table has intermediate legs, they should be assembled prior to installing the end legs.

1. Begin by dropping the threaded cross dowel into the hole on top of the extension, making sure the slotted end is facing up. Then insert the threaded rod into the clearance hole on front of the extension and fasten it halfway into the cross dowel as shown in the view above.
2. Next, attach the extensions to the legs making sure the holes in the leg align with the dowel pins in the extension and that the threaded rod in the extension can be inserted into the clearance hole on the leg.
3. Attach the legs to the frame rails, once again making sure all the corresponding holes align with one another. Locate the "D" shape pockets inside the frame rails and attach the rectangular washer, followed by the flange nut. Tighten the nut using a 1/2" wrench.
4. The frame is now fully assembled and can be mounted to the worksurface. Verify the frame is centered completely and fasten it to the worksurface using the supplied screws.

TOOLS REQUIRED:

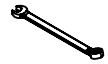


INTERMEDIATE LEGS

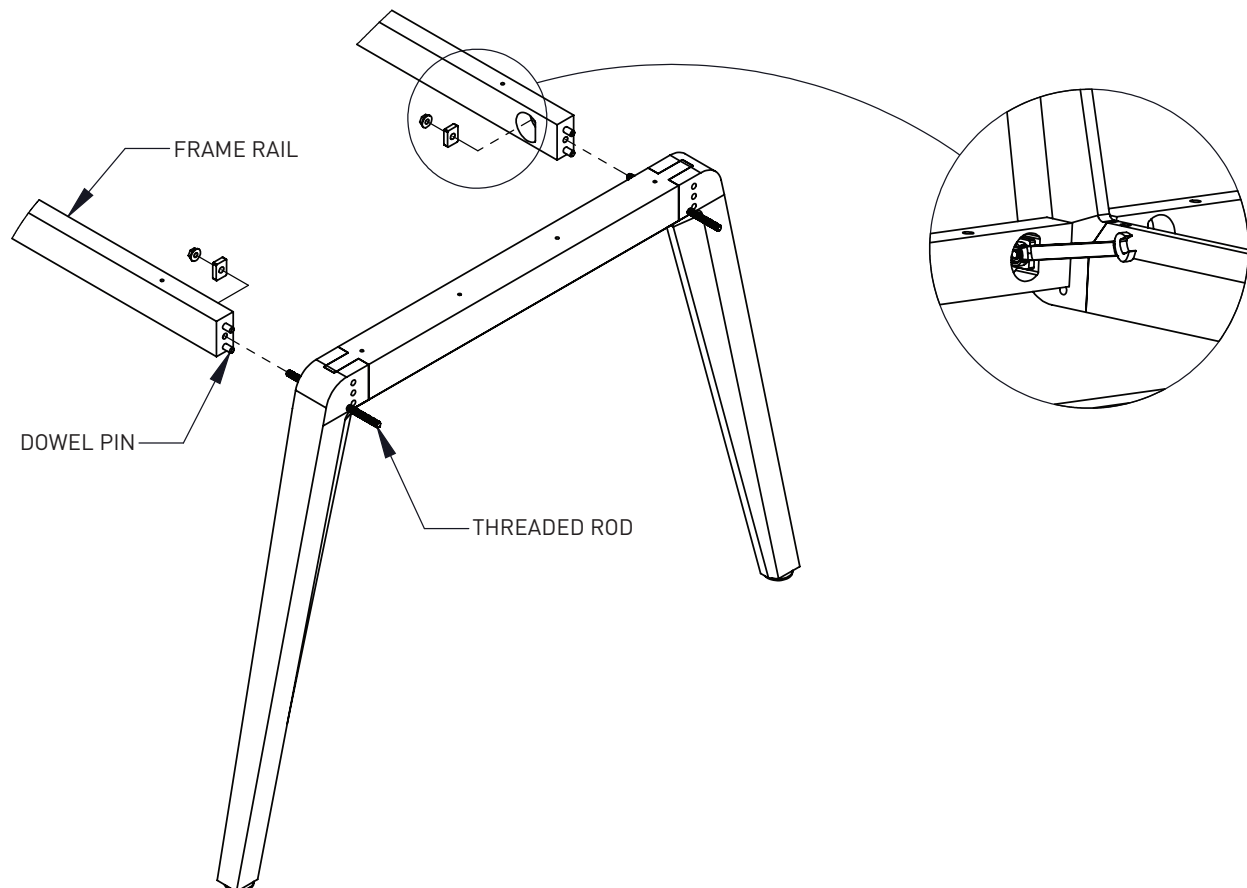
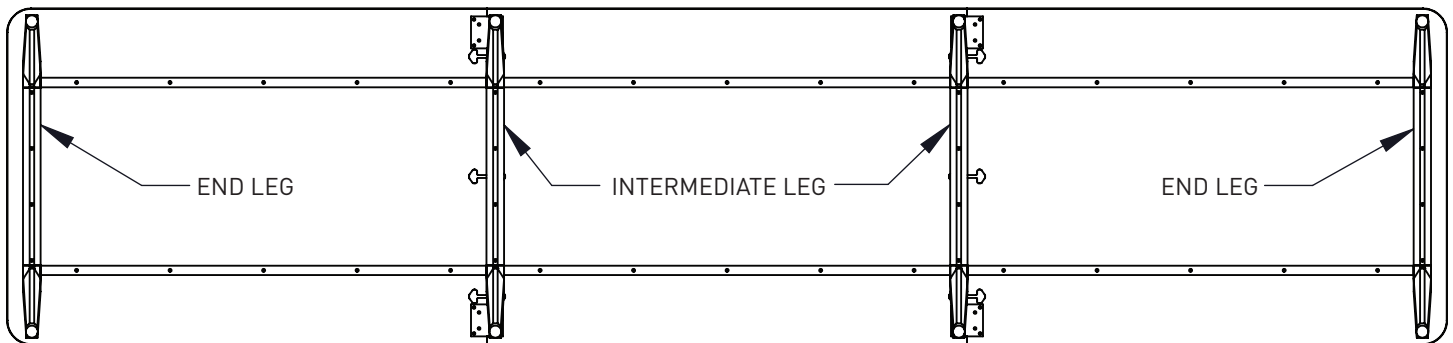
INSTALLATION INSTRUCTIONS

1. Begin by dropping the threaded cross dowel into the hole on top of the extension, making sure the slotted end is facing up. Then insert the threaded rod into the clearance hole on front of the extension and fasten it halfway into the cross dowel as shown in the view above.
2. Next, attach the extensions to the legs making sure the holes in the leg align with the dowel pins in the extension and that the threaded rod in the extension can be inserted into the clearance hole on the leg.
3. Attach the legs to the frame rails, once again making sure all the corresponding holes align with one another. Locate the "D" shape pockets inside the frame rails and attach the rectangular washer, followed by the flange nut. Tighten the nut using a 1/2" wrench.
4. The frame is now fully assembled and can be mounted to the worksurface. Verify the frame is centered completely and fasten it to the worksurface using the supplied screws.

TOOLS REQUIRED:



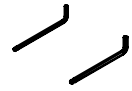
1/2"
Combination
Wrench



FOOT RAIL ASSEMBLY

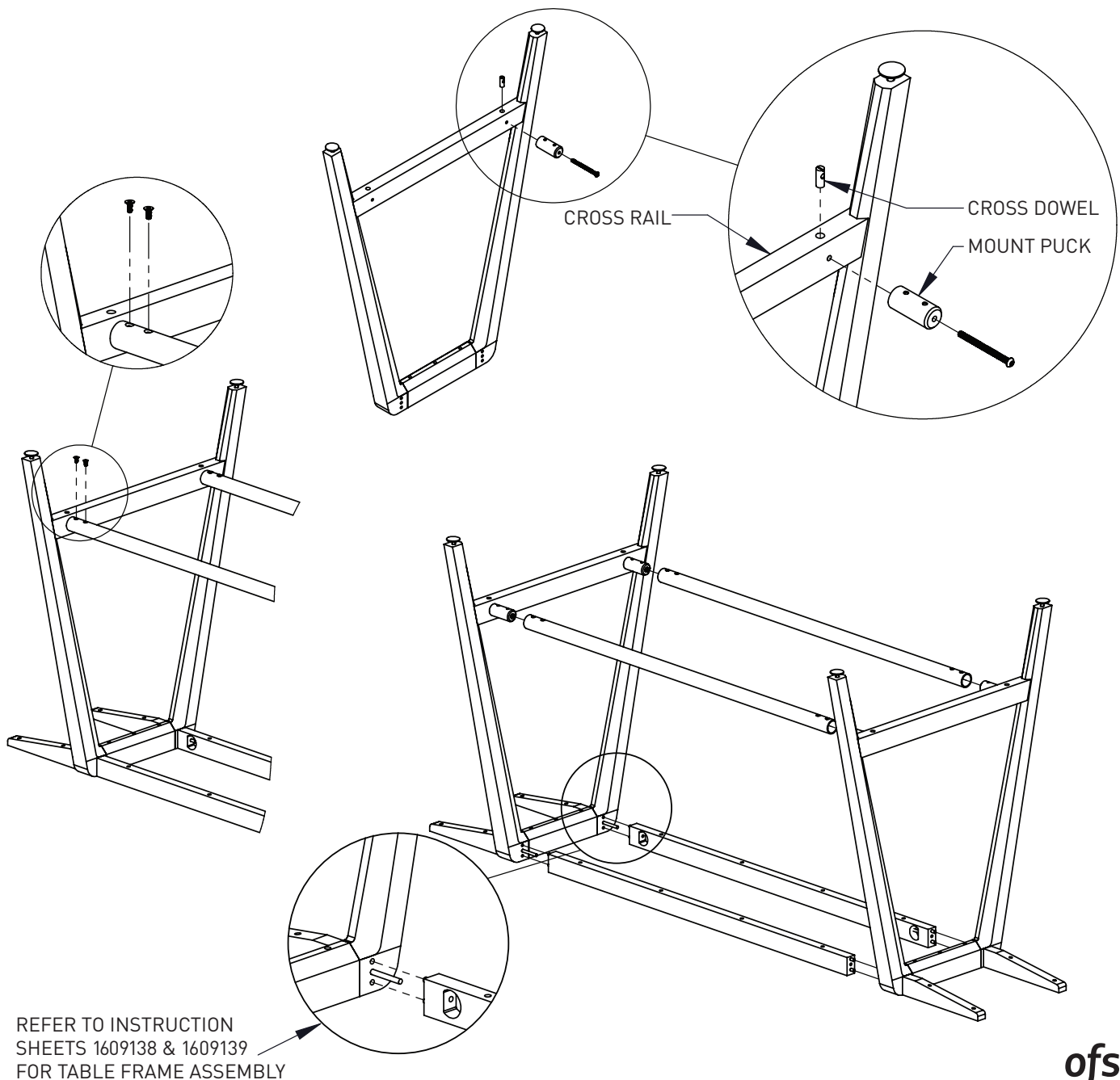
INSTALLATION INSTRUCTIONS

TOOLS REQUIRED:



5/32" - 3/16"
Allen Wrench

1. Begin by locating the (2) holes bored on the bottom of the cross rail on the leg. Insert a cross dowel into the hole, making sure the slotted end of the cross dowel is facing towards you. Next, insert the 4" long screw from the HK-128 kit into the mount puck and thread into the cross dowel. Using the view above, make sure the threaded holes of the mount puck are aligned vertically with the holes in the cross rail and fully tighten the screw.
2. Using the instruction sheets 1609138 & 1609139 as an aid, begin assembling the frame together. Align and insert the wood frame rails onto the legs, making sure the foot rails are being inserted onto the mount pucks at the same time, as shown in the view above. After the frame has been assembled and the frame rails fully tightened, secure the foot rails by fastening the flat head screws from the HK-128 kit through the mounting holes of the foot rails and into the mount pucks.



FOOT RAIL ASSEMBLY FOR TWO-PIECE TOP

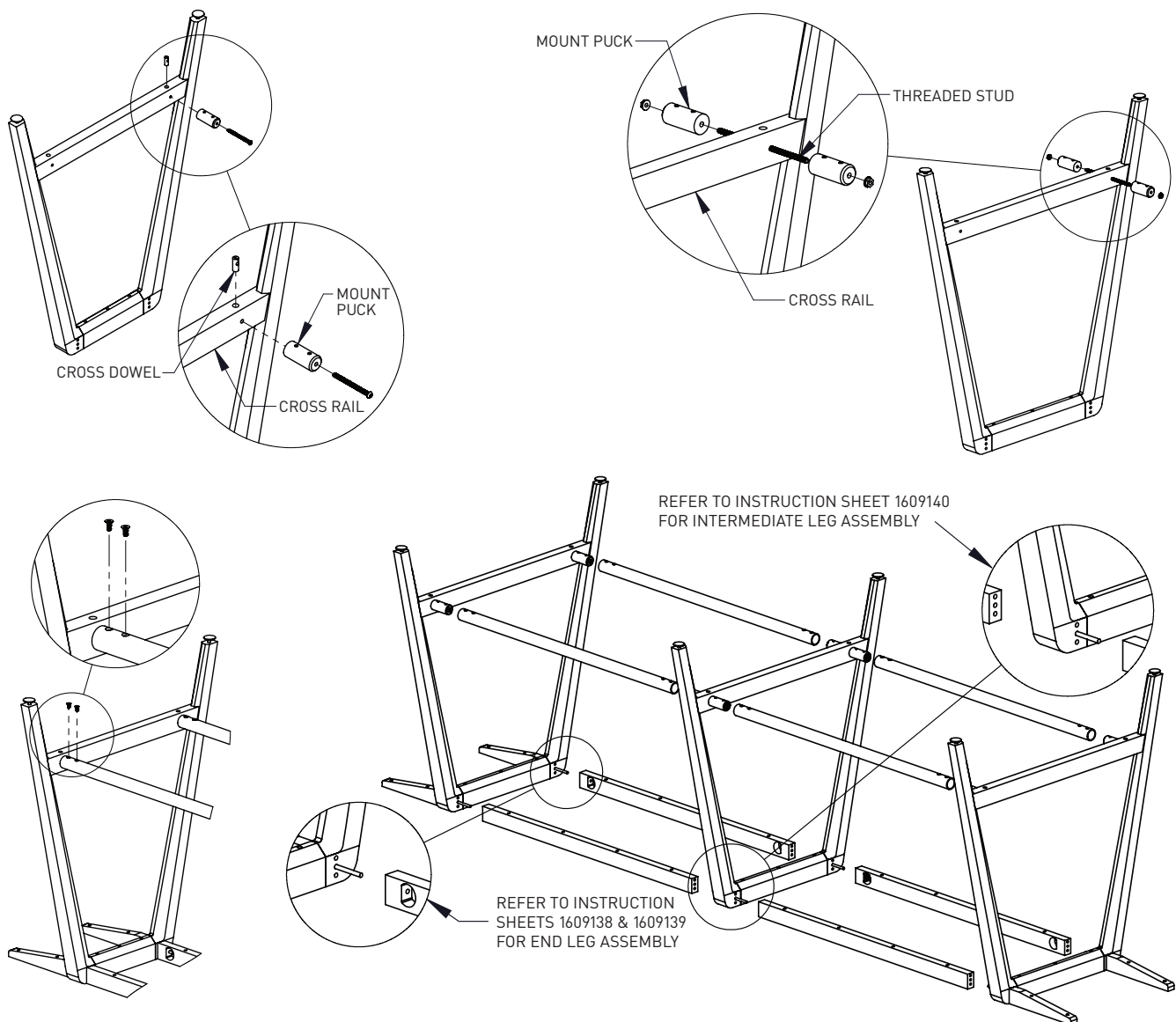
INSTALLATION INSTRUCTIONS

TOOLS REQUIRED:

1/2"

Combination
Wrench5/32" - 3/16"
Allen Wrench

1. Begin by locating the (2) holes bored on the bottom of the cross rail on the end legs. Insert a cross dowel into the hole, making sure the slotted end of the cross dowel is facing towards you. Next, insert the 4" long screw from the HK-128 kit into the mount puck and thread into the cross dowel. Using the view above, make sure the threaded holes of the mount puck are aligned vertically with the holes in the cross rail and fully tighten the screw.
2. Next, locate the (2) holes bored on the bottom of the cross rail on the intermediate leg. Insert the 8" threaded stud from the HK-131 kit into the hole, followed by a mount puck and hex nut as shown above. When fastening the hex nuts, thread one side until the nut is flush, or just slightly past the end of the stud. This should allow enough exposed threads to fully tighten the opposite side. Also, when tightening the hex nuts, make sure the threaded holes of the mount puck are aligned vertically with the holes in the cross rail.



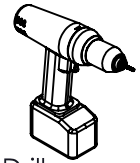
3. Using the instruction sheets 1609138, 1609139 & 1609140 as an aid, begin assembling the frame together. Align and insert the wood frame rails onto the legs, making sure the foot rails are being inserted onto the mount pucks at the same time, as shown in the view above. After the frame has been assembled and the frame rails fully tightened, secure the foot rails by fastening the flat head screws from the HK-128 & HK-131 kit through the mounting holes of the foot rails and into the mount pucks.

LIBRARY TACKBOARD INSTALLATION

INSTALLATION INSTRUCTIONS

1. Begin by locating the through holes on the bottom of the worksurface. Next, insert the mounting pin into the hole, making sure the longer portion of the pin is facing up. Lastly, utilizing the pre-drilled holes in the worksurface, fasten the mount pin to the top using the supplied screws from the HK-118 kit, as shown above.
2. With all the mount pins fully secured, the tackboard(s) can now be installed. Align the bored holes on the bottom edge of the tackboard to the mount pins and drop the tackboard into position. *NOTE: The optional Powdercoated Standoff will need to be slid onto the pins prior to the tackboard, as shown above.*

TOOLS REQUIRED:



Drill

