

## LeanTo building blocks

---





## Table of contents

<a href="#">Overview</a>	3
<a href="#">Single seat</a>	4
<a href="#">Double seat</a>	5
<a href="#">Pillows</a>	6
<a href="#">Tablets - single</a>	7
<a href="#">Tablets - ganging</a>	8
<a href="#">End shelf</a>	9
<a href="#">Inline shelf</a>	10
<a href="#">Inline TV/presentation</a>	11

## Overview

### Shroud

- Optional shroud is available in HPL or veneer
- Specify as an option within the standard model
- Comes in two pieces to assemble on site

### Power

- Optional power is available for all single and double seat units
- Power module includes one outlet and one USB-A and C charging port
- Single units specify left or right side when facing the unit
- Double units specify left, center, right, or left and right side when facing the unit
- Power modules features 42" usable cord length once it exits the unit

### Accent lighting

- Accent up lighting is located behind cushion back
- Switch is located on left when facing the unit
- **Note:** When power is specified in the left location, the light switch will be placed above the power module

### Textile application

- Due to curve, the surround is available in limited textiles, see [approved textiles](#) for available materials
- Inset back and seat cushion do not have textile restrictions
- **Note:** Seat and back cushion are specified in the same textile

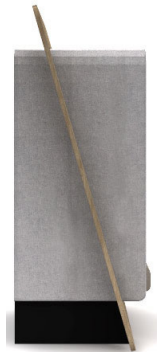
### Shroud



Elevation view



Isometric view



Side view

### Power



shown in left location

### Accent lighting



Shown on single unit



Shown on double unit

## Single seat

### General

- Width: 40.5"w (with shroud: 58.75"w)
- Depth: 31.25"d
- Height: 67"h (with shroud: 75.75"h)
- Bases available as laminate or upholstered
- Laminate base available in any solid laminate
- Upholstered base will match surround textile
- Models available with unfinished, upholstered, or markerboard back
- **Note:** Markerboard is a dry erase laminate

### Options

- Optional shroud
- Optional power
- Optional accent up lighting behind cushion back

### Base types



Laminate base

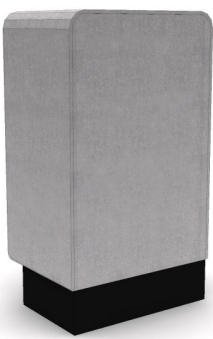


Upholstered base

### Back models



Unfinished back  
[89041](#) laminate base (shown)  
[89341](#) upholstered base



Upholstered back  
[89141](#) (laminate base, shown)  
[89441](#) upholstered base



Markerboard back  
[89241](#) laminate base (shown)  
[89541](#) upholstered base

## Double seat

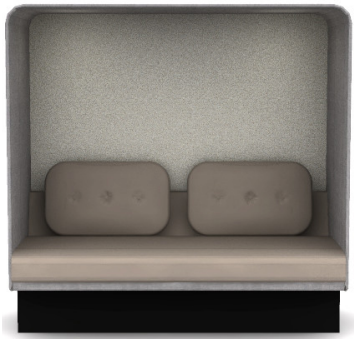
### General

- Width: 67" w (with shroud: 85" w)
- Depth: 31.25" d
- Height: 67" h (with shroud: 75.75" h)
- Bases available as laminate or upholstered
- Laminate base available in any solid laminate
- Upholstered base will match surround textile
- Models available with unfinished, upholstered, or markerboard back
- **Note:** Markerboard is a dry erase laminate

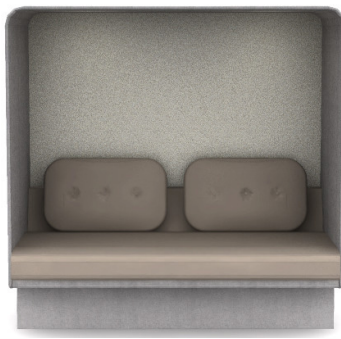
### Options

- Optional shroud
  - Optional power
  - Optional accent up lighting behind cushion back.
- Switch is located on left when facing the unit. The switch is available in black or nickel. **Note:** When power is specified in the left location, the light switch will be placed above the power module

### Base types



Laminate base

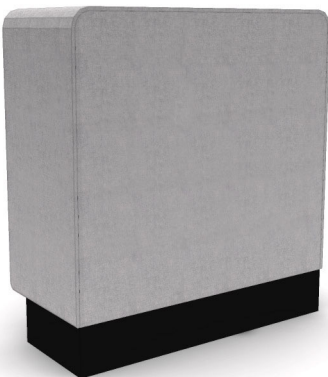


Upholstered base

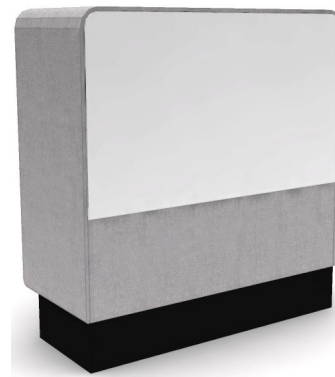
### Back models



Unfinished back  
[89042](#) laminate base (shown)  
[89342](#) upholstered base



Upholstered back  
[89142](#) laminate base (shown)  
[89442](#) upholstered base



Markerboard back  
[89242](#) laminate base (shown)  
[89542](#) upholstered base

## Pillows

- Width: 18"w
- Depth: 4"d
- Height: 7"h (small), 10"h (large)
- Single pillow
- Two pillows can be placed in one lounge unit on left and right sides

**Small pillow**



89P1

**Large pillow**



89P2



## Tablets Single tablets

### General

- Surface thickness: 1" h
- Height from floor: 27" h
- Attaches to surround

### Round tablet

- Width: 17" w
- Depth: 17" d
- Used with or without shroud
- Can be placed on left or right side, non handed

### Work tablet - round end

- Width: 20.66" w
- Depth: 14.84" d
- Used with or without shroud
- Left or right facing

### Work tablet - square end

- Width: 22.29" w
- Depth: 14.84" d
- Used with shroud only
- Left or right facing

### Round tablet



89TR

### Work tablet - round end



89T2  
UR left facing shown

### Work tablet - square end



89T1  
UR left facing shown

## Tablets Ganging tablets

### General

- Surface thickness: 1" h
- Height from floor: 27" h
- Used with shroud models only

### Ganging shelf

- Width: 18.25" w
- Depth: 14.84" d
- Spans between surrounds

### Ganging work tablet - single

- Width: 31.5" w
- Depth: 14.84" d
- Specify left or right facing

### Ganging work tablet - double

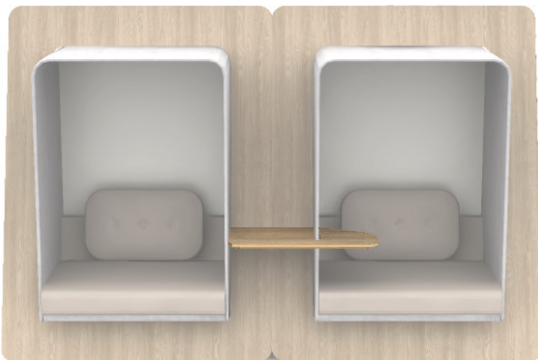
- Width: 44.91" w
- Depth: 14.84" d

### Ganging shelf



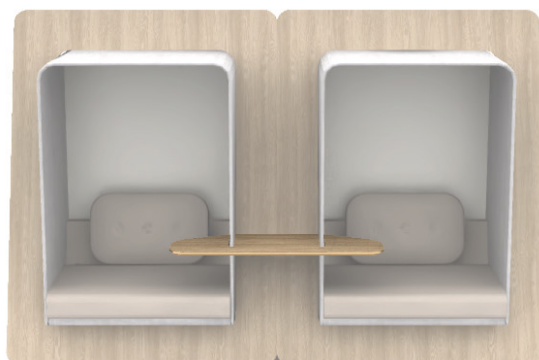
[89GS](#)

### Ganging work tablet - single



[89GT1](#)  
right facing shown

### Ganging work tablet - double



[89GT2](#)



## End shelf Single and double sided

### General

- Depth: 8.8125"d
- Height: 74.875"h
- Five fixed shelves

### Single sided

- Width: 25.875"w
- Handed left or right
- Finished or upholstered back
- **Note:** Upholstered back recommended to use solid fabrics only. No vinyls or leathers
- Used with single sided shroud models

### Double sided

- Width: 25.875"w
- Handed left or right
- Used with double sided shroud models

### Options

- Shelf edge standard as square, optional exposed ply core knife edge

### Single sided



Finished back  
[891SL](#) left hand (shown)  
[891SR](#) right hand



Upholstered back  
[891SLU](#) left hand (shown)  
[891SRU](#) right hand

### Double sided



[892S](#)

### Ply knife edge



## Inline Shelf

### General

- Widths: 30"w, 44"w, 58.656"w
- Depth: 28.625"d
- Height: 75.25"h
- Five fixed shelves
- **Note:** Used between two units with shrouds

### Options

- Shelf edge standard as square, optional exposed ply core knife edge
- Border width available as full width, half width, or no border. **Note:** Full width not available on 30"w model

### Single sided



89-4475S5 shown

### Ply knife edge



### Shelf border width



FULB (standard)  
full border width  
44"w and 58"w models only



HLFB  
half border width



NBRD  
No border

## Inline TV/presentation

### General

- Widths: 30"w, 44"w, 58.656"w
- Depth: 28.625"d
- Height: 75.25"h
- One fixed shelf
- **Note:** Used between two units with shrouds

### Options

- Shelf edge standard as square, optional exposed ply core knife edge
- Border width available as full width, half width, or no border. **Note:** Full width not available on 30"w model
- Optional cup in left, right, or both locations
- Optional TV mount

### Single sided



89-4475P1 shown

### Ply knife edge



### Shelf border width



FULB (standard)  
full border width  
44"w and 58"w models only



HLFB  
half border width



NBRD  
No border

### Cup



LFCL shown  
left end facing

### TV mount



QH