

Obee ganging & electrical assembly

---





## Important safety instructions

When using an electrical furnishing, basic precautions should always be followed, including the following:

This furnishing is made for commercial use only.

Read all instructions before using this furnishing:

## DANGER

To reduce the risk of electrical shock:

1. Always unplug this furnishing from the electrical outlet before cleaning.

## WARNING

To reduce the risk of burns, fire, electric shock, or injury to persons:

1. Unplug from outlet before putting on or taking off parts.
2. Close supervision is necessary when this furnishing is used by, or near children, invalids, or disabled persons.
3. Use the furnishing only for its intended use as described in these instructions.  
Do not use attachments not recommended by the manufacturer.
4. Never operate this furnishing if it has a damaged cord or plug, if it is not working properly, if it has been dropped or damaged, or dropped in water. Return the furnishing to a service center for examination and repair.
5. Keep the cord away from heated surfaces.
6. Do not use outdoors.
7. Use only SJT 18 AWG cord.
8. Risk of injury. Maximum load 75 pounds.

To reduce the risk of electric shock, this furnishing has a polarized plug (one blade is wider than the other). This plug will fit in a polarized outlet only one way. If the plug does not fit fully in the outlet, reverse the plug. If it still does not fit, contact a qualified electrician to install the proper outlet. Do not change the plug in any way.

**Note** - servicing is only to be performed by an authorized representative.

### Servicing of double-insulated products

In a double-insulated product, two systems of insulation are provided instead of grounding. No grounding means is provided on a double-insulated product, nor is a means for grounding to be added to the product. Servicing a double-insulated product requires extreme care and knowledge of the system, and is to be done only by qualified service personnel. Replacement parts for a double-insulated product must be identical to the parts they replace. A double-insulated product is marked with the words "DOUBLE INSULATION" OR "DOUBLE INSULATED". The symbol (square within a square) is also able to be marked on the product.

### Save these instructions

## Tools required

No tools required

## Ganging

1. Level units to each other before connecting
2. Install provided pins HK-270 [low back units (set of 2)] and HK-271 [high back units (set of 3)] to corresponding brackets
3. Align pins with slots on corresponding unit and press together as shown in figure 1 and 2
4. To disconnect, lift the right-facing unit up to unlock ganging brackets before separating units as shown in figure 3

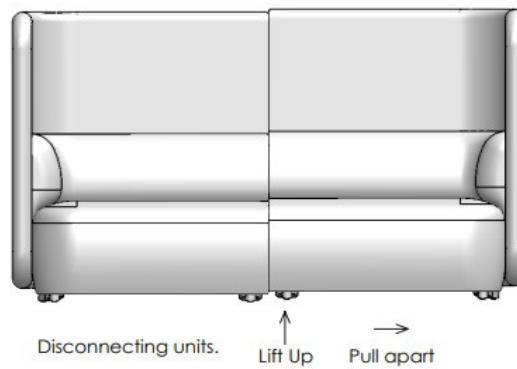
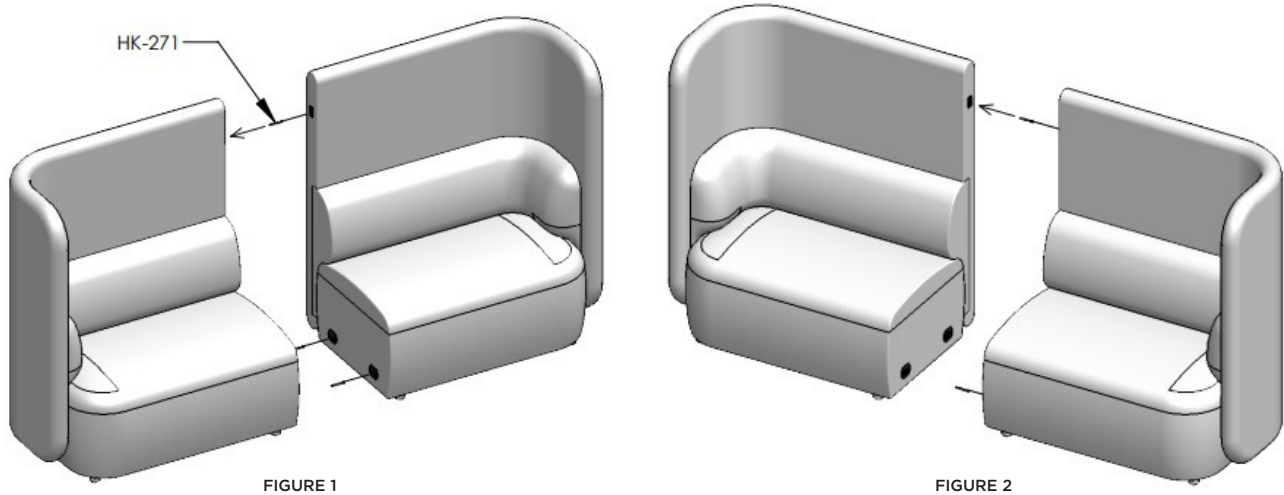


FIGURE 3

**Tools required**

No tools required

**Mirrored Ganging**

1. Ganging hardware is installed from the factory with the intent that all units be ganged from left to right. When trying to gang where units are mirrored (shown below) you will end up with a "male to male" or "female to female" connection.
2. To remedy this, exchange one set for the opposite hardware. The direction one gangs the unit will determine which set you replace.
3. 210-MG includes one set of male and one set of female connectors with screws to attach.

Tools Required:

Impact screwdriver with #2 phillips bit

Tip:

Be sure to use existing screw holes when installing new hardware.

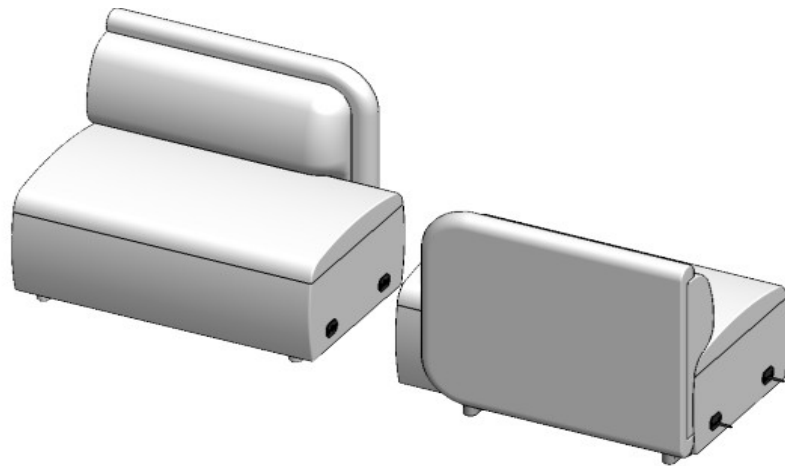


FIGURE 1

## Tools required

No tools required

## Modular power

When the infeed is on the end or beginning of a run:

1. Place units in correct configuration
2. Make sure all units are level to each other before connecting power and ganging
3. Place appropriate jumpers in units
4. Grey power blocks are used for jumper to jumper connections or infeed to jumper connections. See figure 1 for placement
5. Follow the ganging assembly instructions to attach units together

### NOTE:

- 54" jumpers are used on center units
- 60" jumpers are used on 90° corners
- 84" jumpers are used on 120° corners

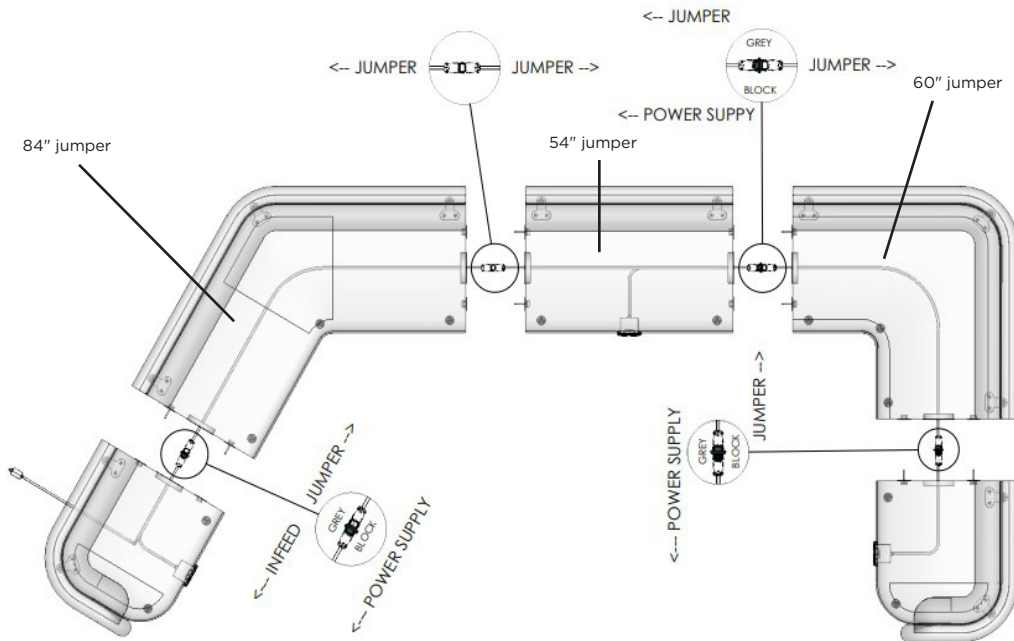


FIGURE 1

## Tools required

No tools required

## Modular power

When the infeed is in the middle of the run:

1. Place units in correct configuration
2. Make sure all units are level to each other before connecting power and ganging
3. Place appropriate jumpers in units
4. Grey power blocks are used for jumper to jumper connections and black power blocks are used to connect jumpers and the infeed. See Figure 1 for placement
5. Follow the ganging assembly instructions to attach units together

### NOTE:

- 54" jumpers are used on center units
- 60" jumpers are used on 90° corners
- 84" jumpers are used on 120° corners

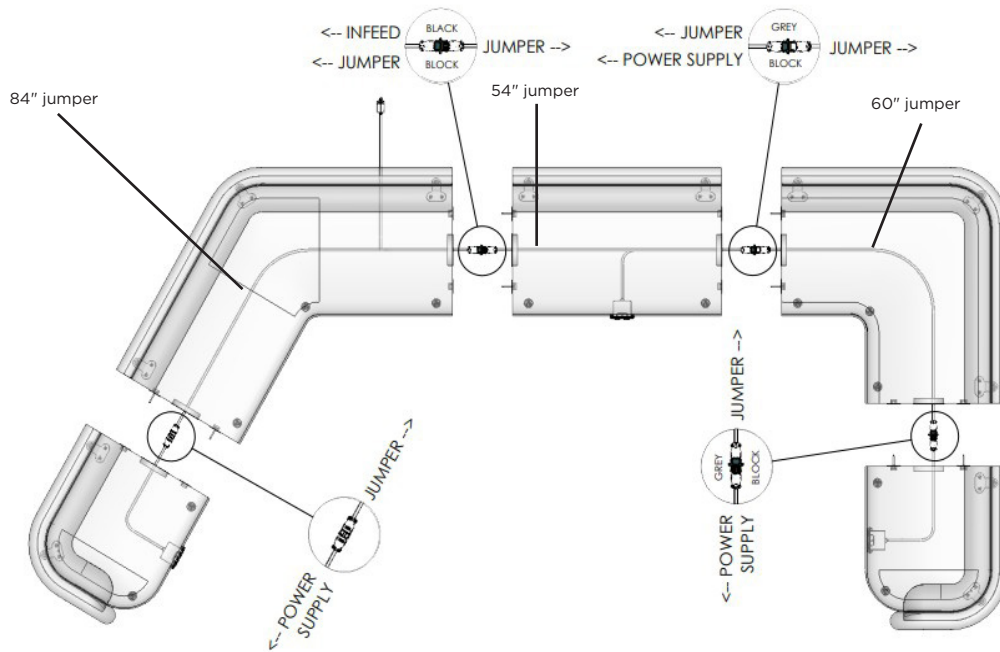


FIGURE 1