



Riff Tables

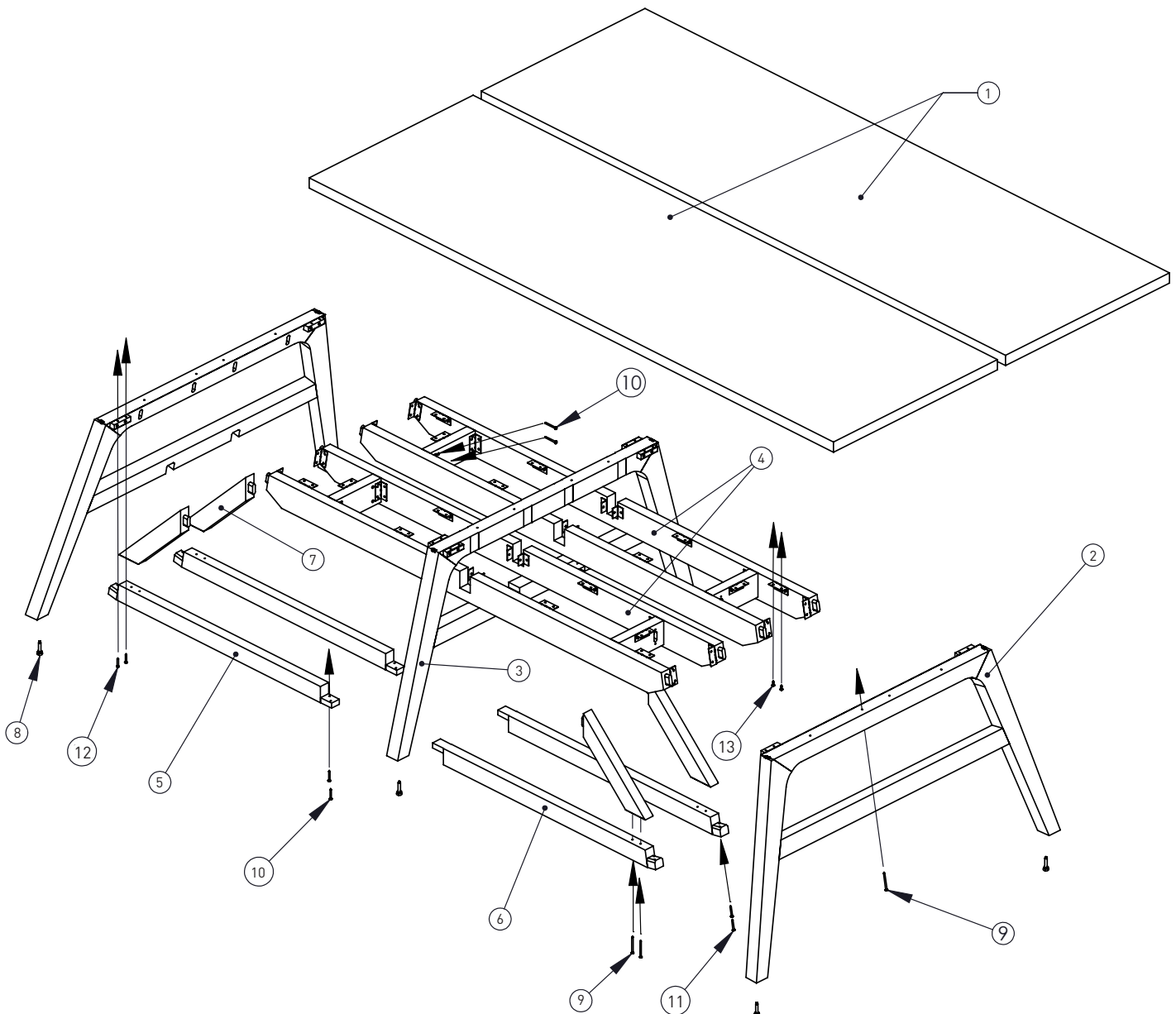
WORK TABLE
ASSEMBLY INSTRUCTIONS

ofs

Work Table Assembly Instructions

RIFF TABLE COMPONENTS

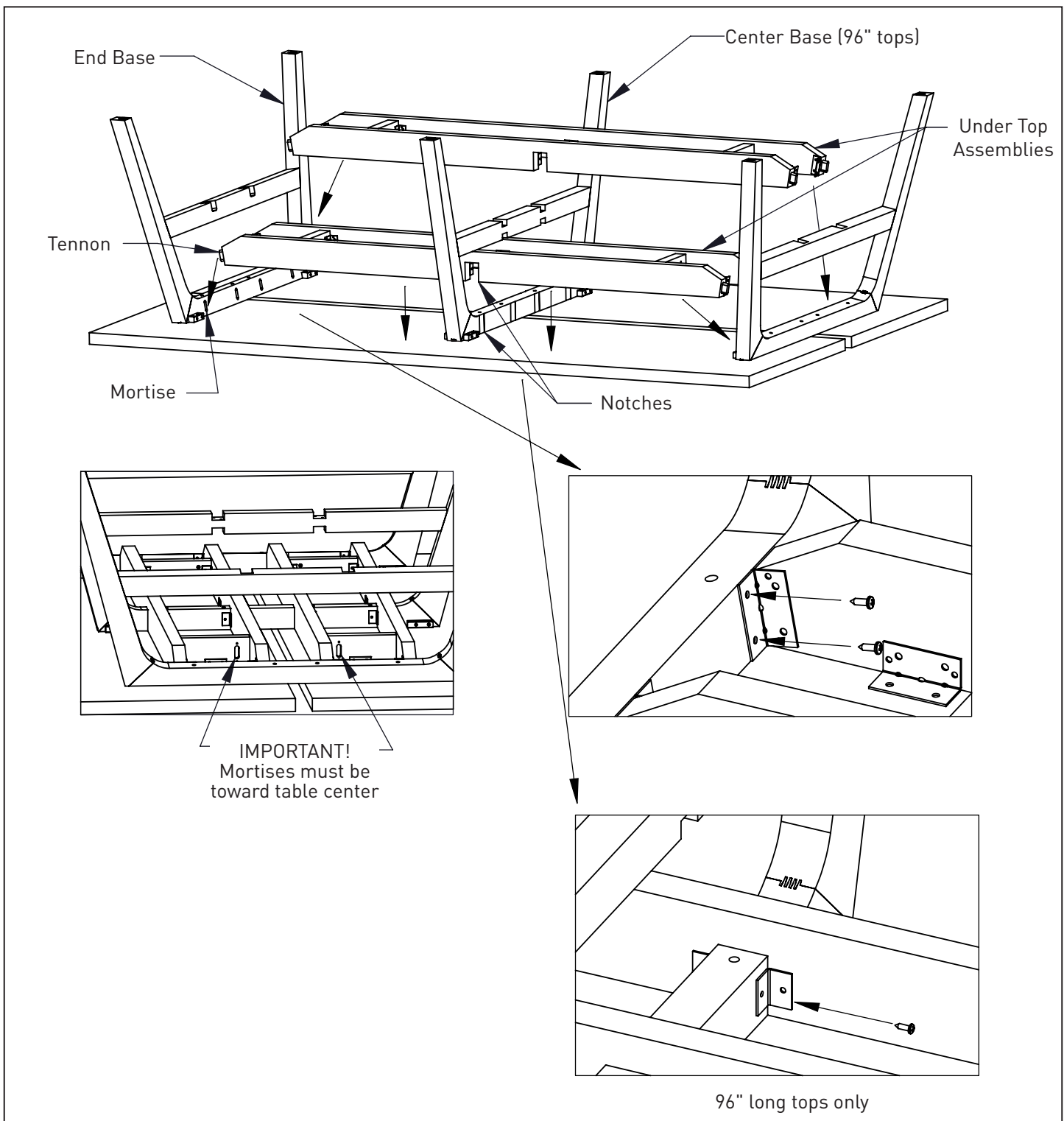
	<u>QTY</u>
1 Top	2
2 Leg Assembly	2
3 Center Leg Assembly	1
4 Support Assembly	2
5 Cross Rail-Under	2
6 Cross Rail-Over	2
7 Brace	4
8 1000599/Leveler	6
9 #8 x 2 1/2" Pan Head Screws (HK-101)	16
10 #8 x 2" Pan Head Screws (HK-102)	12
11 #8 x 1 1/2" Pan Head Screws (HK-103)	8
12 #8 x 1 1/4" Pan Head Screws (HK-104)	16
13 #8 x 5/8" Pan Head Screws (HK-105)	56



Work Table Assembly Instructions

STEP 1

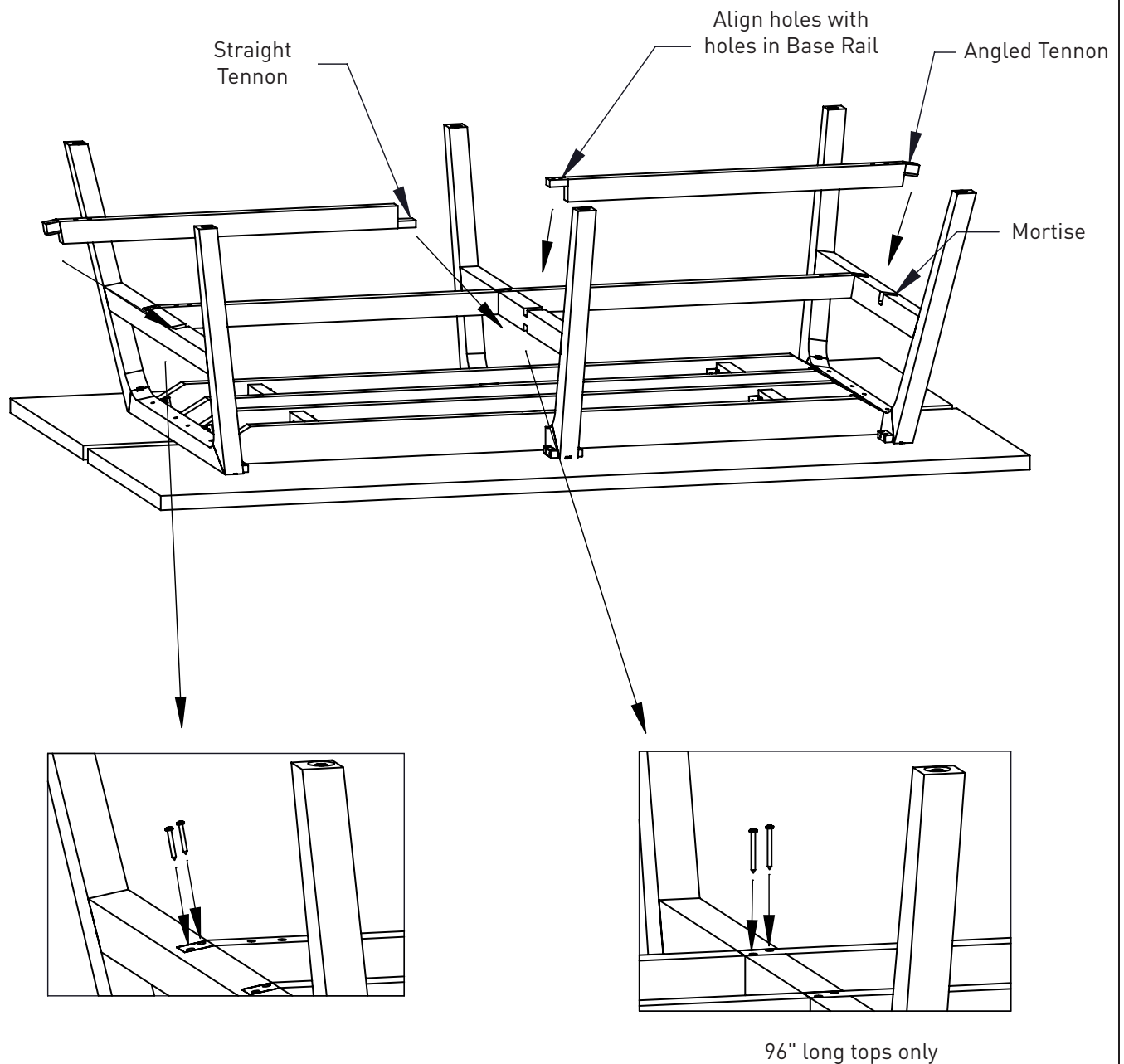
1. Place Worksurfaces, bottom side up, on a non-marring surface.
2. Align Notches and slide Under Top Assemblies onto Center Base (96" long tops only).
3. Connect End Bases to Under Top Assemblies by inserting Tennonns into Mortises.
4. Secure Bases to Under Top Assembly with #8 x $\frac{5}{8}$ " Pan Head Screws (HK-105).



Work Table Assembly Instructions

STEP 2

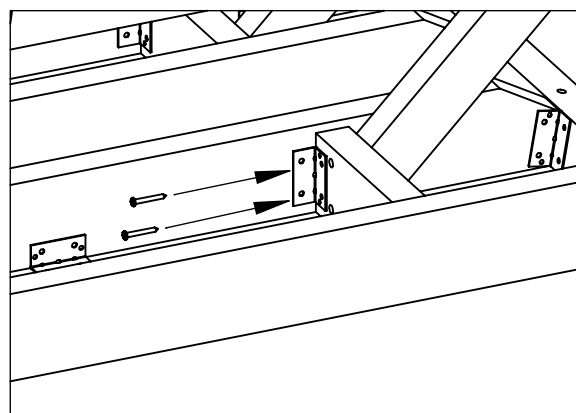
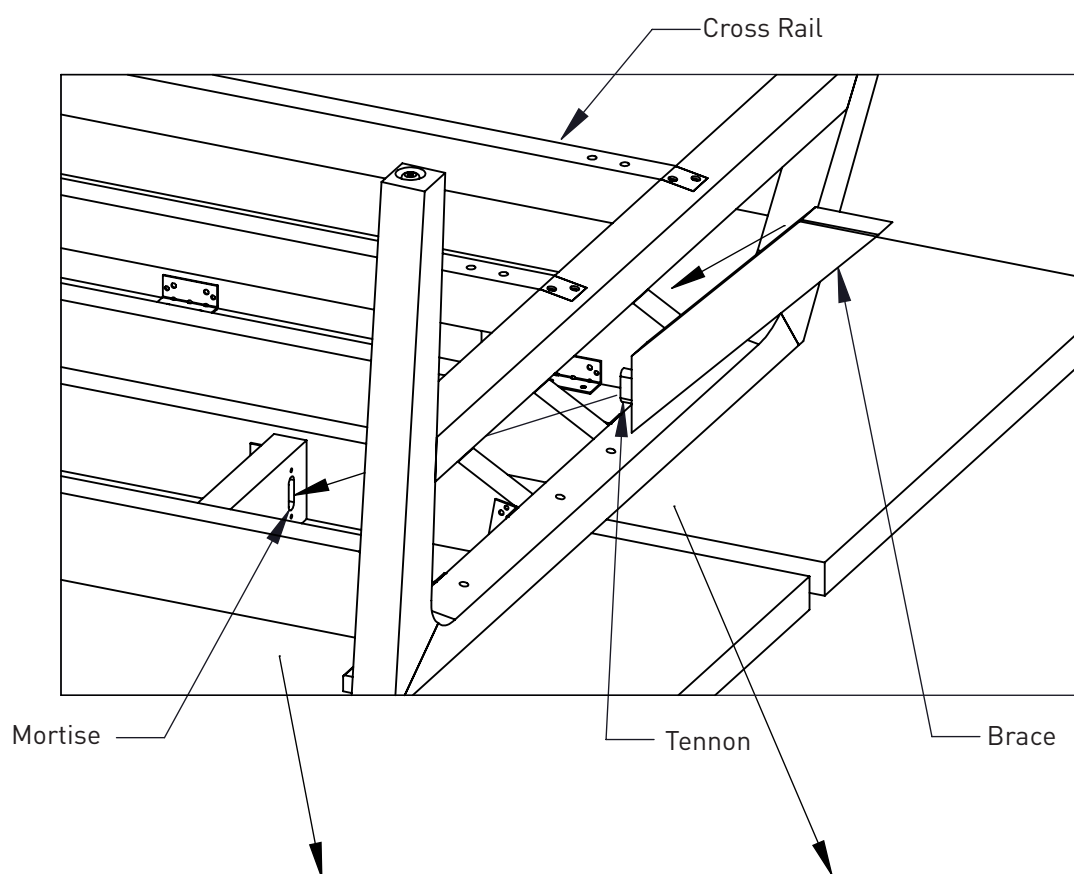
1. Fit Cross Rail Angled Tennons into Mortise on bottom of Base Rail.
2. Straight Tennons fit on top and bottom of Center Base Rail (96" long tops only).
3. Secure Angled Tennons with #8 x 1 1/2" Pan Head Screws (HK-103).
4. Secure Straight Tennons with (2) #8 x 2" Pan Head Screws (HK-102).



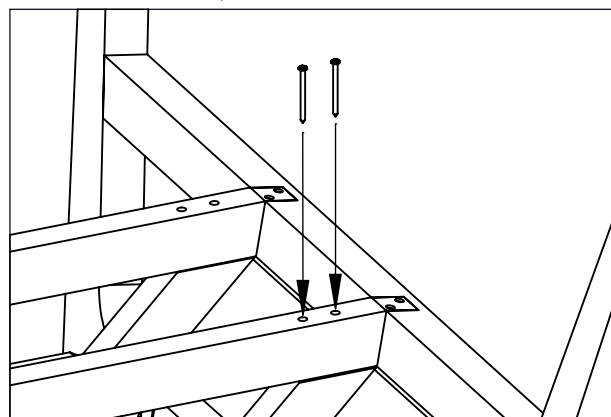
Work Table Assembly Instructions

STEP 3

1. Install Braces by inserting Tennon into Mortise.
2. Bottom edge of Brace should rest flush on Cross Rail.



Secure Brace to Mount Plate with
#8 x 2" Pan Head Screws (HK-102).

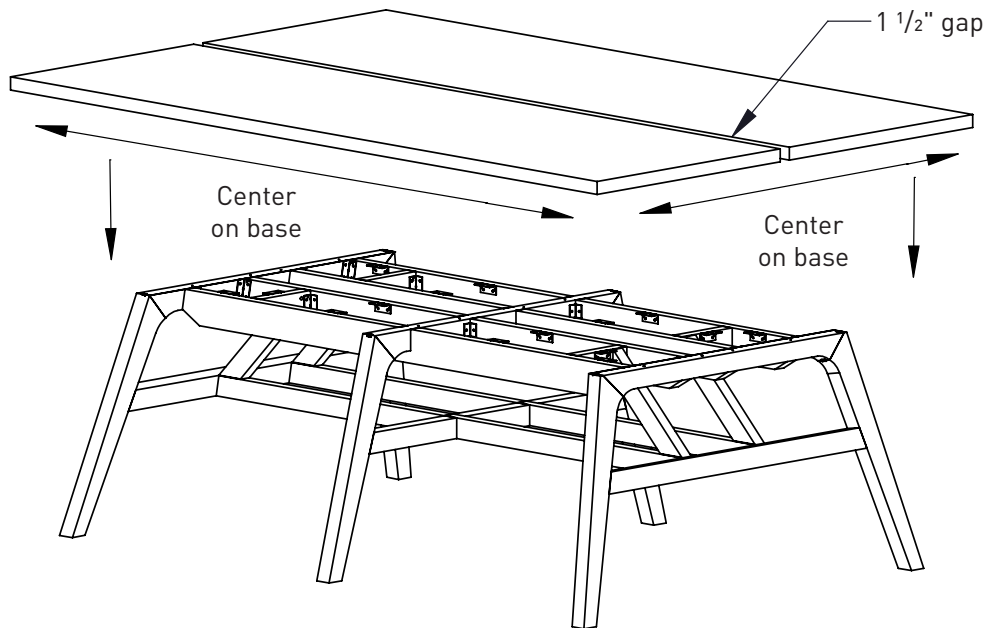


Secure Brace to Cross Rail with
#8 x 2 1/2" Pan Head Screws (HK-101).

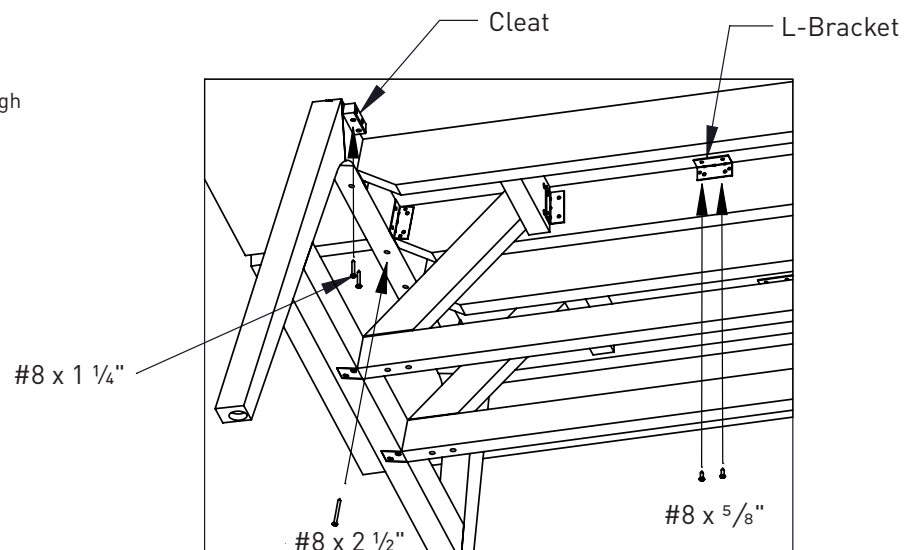
Work Table Assembly Instructions

STEP 4

1. Turn Base over and place in desired location.
2. Make Base level by adjusting Levelers.
3. Place Worksurface on Base and position so it is centered both directions with 1 1/2" gap between tops.



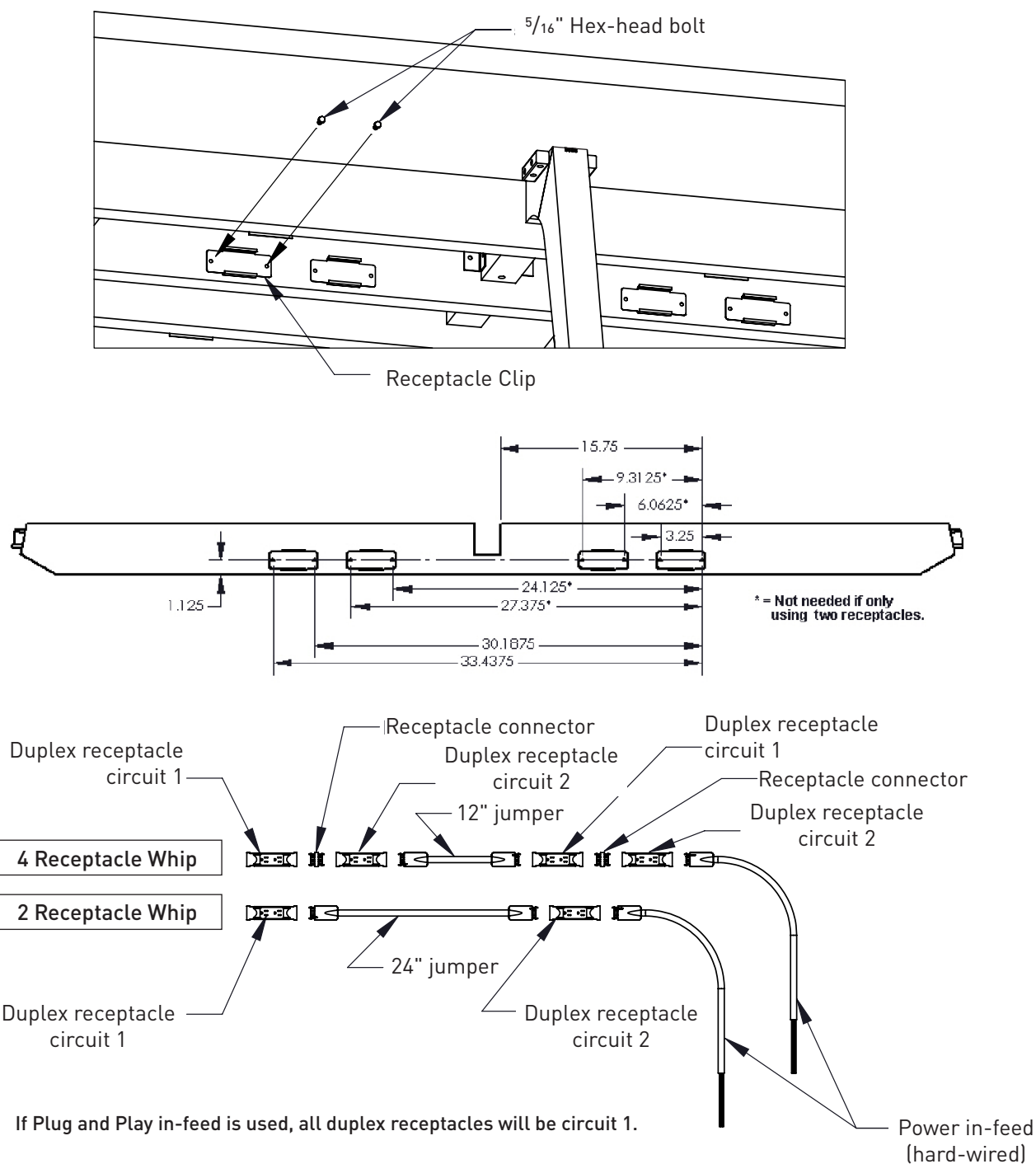
4. Secure Worksurface to Base by screwing #8 x 5/8" Pan Head Screws (HK-105) through the L-Brackets.
5. Use #8 x 1 1/4" Pan Head Screws (HK-104) to secure Cleats to Worksurface.
6. Use #8 x 2 1/2" Pan Head Screws (HK-101) to secure Bases to Worksurface.



Work Table Assembly Instructions

STEP 5

1. Attach Receptacle Clips to inside face of Under Top Assembly (refer to hole location diagram below).
2. $\frac{5}{16}$ " Hex Head Bolts are packaged with Receptacle Clips.
3. Snap assembled Whip (see diagram on page bottom) into Receptacle Clips.



Riff Tables

WORK TABLE ASSEMBLY INSTRUCTIONS

