

Rowen building blocks





Table of contents

Family	3
Lounge	3 - 6
Benches	7 - 9
Conversation lounge	10 - 12
Storage	13 - 29
Occasional & pull up tables	30 - 31
Cafe tables	32 - 34



Family

- Lounge
- Conversation lounge
- Storage
- Occasional & pull up tables
- Cafe tables
- Benches

Lounge

- Lounge options available in variety of sizes with modular options
- Both arms, single arms, or no arms available
- Two leg heights available
- Diamond button detailing on back of chair available in select leathers
- Legs available in metal, wood, or wood with ferrule
- Modular units can gang together

Shapes



Lounge
33.5"w x 29.75"d
83041 83041-MT



Loveseat
58.5"w x 29.75"d
83042 83042-MT



Sofa
84"w x 29.75"d
83043 83043-MT



Corner
30.5"w x 30.5"d
83045 83045-MT



Chaise
29.25"w x 58.25"d
83046 83046-MT



Loveseat with table
86"w x 30"d
83242 83242-MT



Arm options

- Arms are offered on all lounge sizes
- Certain option can have no arms, or single arms



Both arms



Left or right facing arm

83141 - Lounge
83142 - Loveseat
83143 - Sofa



Armless

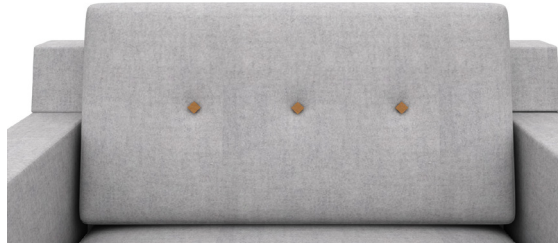
83441 - Lounge
83442 - Loveseat
83443 - Sofa

Button options

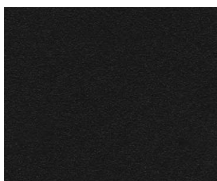
- Oval leather buttons are available on the back
- Three buttons on the back of each cushion
- Buttons are available in Green Hides leather black, brown, cream, light gray, warm beige, and white



No buttons
X9 - None



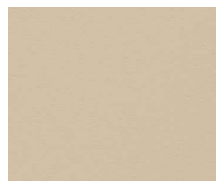
Buttons
H5W - 3 Positions



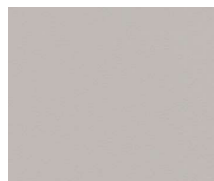
Black



Brown



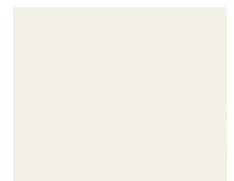
Beige



Light gray



Warm beige



White



Leg options

- Three leg options are available for Rowen lounge
- The wood legs are available in standard wood seating finishes
- The metal legs and ferrules are available in standard and studio powdercoats



Metal leg
MAL



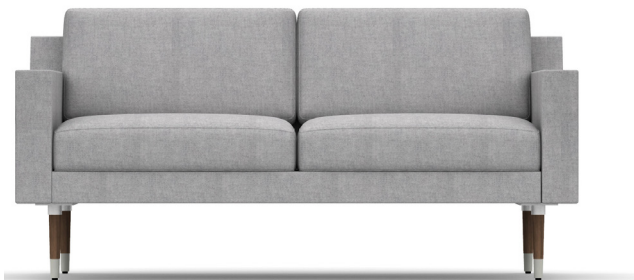
Wood leg
WDL



Wood and ferrule leg
WFL

Leg height options

- Each leg type comes in two different heights; lounge & dining
- Dining height legs adds 2" to the overall height of the chair



Lounge height
LNGH



Dining height
DNGH

Full table options

- The full table option on loveseat lounge units is available in solid color HPL, wood grain HPL, veneer, studio veneer, or solid surface



Solid color HPL
SHPL



Wood grain HPL
WHPL



Veneer
VEN



Studio veneer
SVEN



Solid surface
SOL

Power options

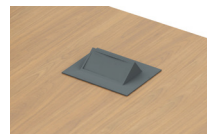
- Power in the full table is a PS-68 unit with 1 outlet and 2 USB-A units
- Available in black and silver



No Power
X9



Power
SLV/BLK



Benches

- Benches are either wood or upholstered material
- Wood slat bench comes in one size
- Wood slat bench has cushion addition
- Upholstered benches come double or triple width
- Triple width benches can have a table option

Shapes



Triple wood slat bench
66"w x 19.25"d x 16"h
83140



Double bench
48"w x 24"d x 17.5"h
83049
83049-MT



Triple bench
72"w x 24"d x 17.5"h
83040
83040-MT



Triple bench with center table
72"w x 24"d x 17.5"h
83249
83249-MT



Triple bench with left facing table
72"w x 24"d x 17.5"h
83149
83149-MT



Triple bench with right facing table
72"w x 24"d x 17.5"h
83149
83149-MT

Leg options

- Three leg options are available for Rowen lounge
- The wood legs are available in standard wood seating finishes
- The metal legs and ferrules are available in standard and studio powdercoats



Metal leg
MAL



Wood leg
WDL



Wood and ferrule leg
WFL

Leg height options

- Each leg type comes in two different heights; lounge & dining
- Dining height legs adds 2" to the overall height of the chair bringing it to 19.5"



Lounge height
LNGH



Dining height
DNGH

Table options

- The full table option on loveseat lounge units is available in solid color HPL, wood grain HPL, veneer, studio veneer, or solid surface



Solid color HPL
SHPL



Wood grain HPL
WHPL



Veneer
VEN



Studio veneer
SVEN



Solid surface
SOL

Power options

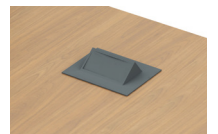
- Power in the full table is a PS-68 unit with 1 outlet and 2 USB-A units
- Available in black and silver



No Power
X9



Power
SLV/BLK



Conversation Lounge

- Conversation lounge available in lounge, loveseat, and sofa
- Two leg heights available
- Diamond button detailing on back of chair available in select leathers
- Round button detailing on back and/or seat of chair available in upholstered finish
- Legs available in metal, wood, or wood with ferrule
- Multiple textile option on seat, back, frame, arms, and apron

Shapes



Lounge
36.5"w x 33.5"d
83041G
83041G-MT

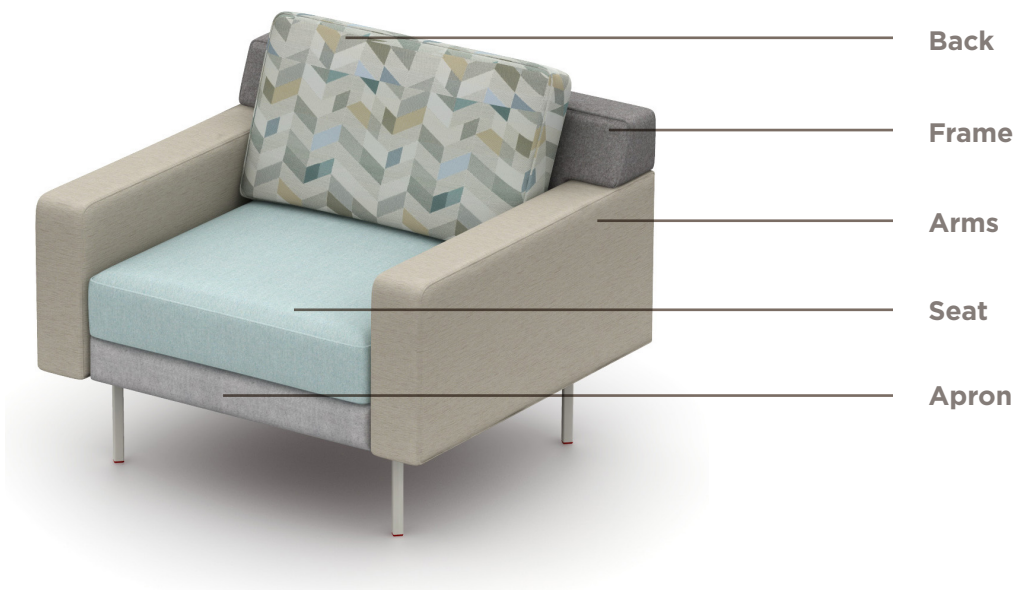


Loveseat
62.5"w x 33.5"d
83042G
83042G-MT



Sofa
88.5"w x 33.5"d
83043G
83043G-MT

Multiple textile locations



Button options

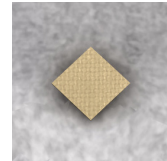
- Diamond shaped leather buttons are available on the back
- Three buttons on the back of each cushion
- Leather buttons are available in Green Hides leather black, brown, cream, light gray, warm beige, and white
- Round fabric buttons available on back, seat, and back & seat
- Round buttons will have 3 on the back and 9 on the seat
- Round fabric buttons always match the cushion upholstery



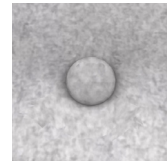
No buttons
X9 - None



Back
BBC1 - Back cushion only
BLL - Beige leather left
RFBT - Fabric button right



Leather



Fabric

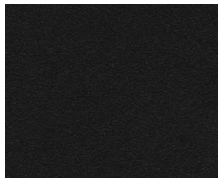


Seat
BSC1 - Seat cushion
RFBT - Fabric button only

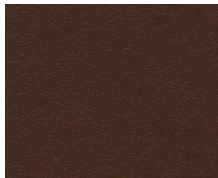


Back & Seat
BBS1 - Back and seat cushion
RFBT - Fabric button only

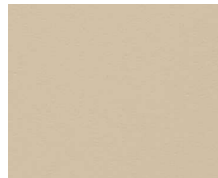
Leather button options



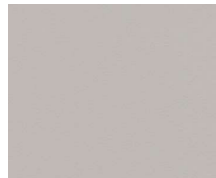
Black



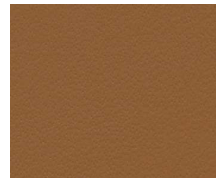
Brown



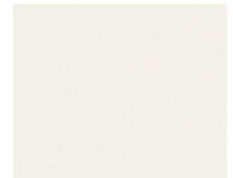
Beige



Light gray



Warm beige



White



Leg options

- Three leg options are available for Rowen lounge
- The wood legs are available in standard wood seating finishes
- The metal legs and ferrules are available in standard and studio powdercoats



Metal leg
MAL



Wood leg
WDL



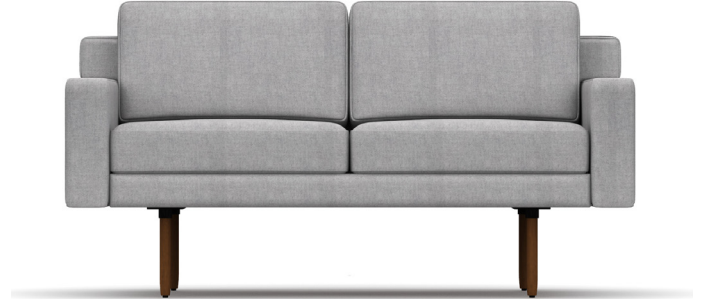
Wood and ferrule leg
WFL

Leg height options

- Each leg type comes in two different heights; lounge & dining
- Dining height legs adds 2" to the overall height of the chair



Lounge height
LNGH



Dining height
DNGH



Storage

- Rowen storage units come in credenza and bookcase configurations
- Units come 60.25" or 89.5" wide
- Credenza units come 26", 30", and 36" high
- Bookcase units come 80" high
- Each storage type has different configuration options based on height and width
- Door units can come locking

Materiality

- The chassis of all storage units are veneer in quartered or flat cut finishes
- The legs are a powdercoat available in studio & standard finishes
- Credenza tops can be veneer, solid surface, or glass
- Back of bookcase units can be unfinished, markerboard, or markerboard /tackboard

Elevations



26" H
60.25" w



30" H
89.5" w



36" H
60.25" w



80" H
89.5" w

Credenza options

- Credenza tops are available in veneer, solid surface, or back painted glass
- Can come locking or non lock

Top finishes



Veneer



Solid Surface



Back painted glass

Locking



Door locking



Lateral locking

Credenza configurations

- Credenza units have different storage options depending on width and height of unit
- Door, open, file drawer, periodical displays, waste bins, and AV cabinet
- 60" wide units are always a combination of 2 storage options
- 90" wide units are always a combination of 3 storage options
- 26" & 30" high units can only be door, drawer, or open
- 36" high units can have the waste bin and AV options
- 90" wide units can have the periodical displays
- All open shelf units have the option of adding tray drawers

Door options

- Door options are available on all sizes
- Contain one adjustable shelf
- Doors open 110 degrees



26" H



30" H



36" H

File options

- File options are available on all sizes
- 30" high includes one interior tray drawer
- 36" high includes 2 tray files



26" H



30" H



36" H

Open Storage options

- File options are available on all sizes
- Has one adjustable shelf
- A split door open storage is available on 26" & 30" h
- Has the option for tray files with fixed shelf
 - 26" h has 2 trays
 - 30" & 36" h have 3 trays



26" H



30" H



36" H



26" H



30" H



36" H

Waste bin option

- Waste bin options are available on 36" h units
- Waste bin storage can come with file, door, and open storage
- Comes with 2 waste bins
- Waste bins are 27 quarts



36" H



Detail

AV option

- Includes a pull out shelf, 4 vents, and a PS-77 with 6 AC outlets
- Doors open 110 degrees in order to shelf to full pull out
- AV storage can come with file, door, and open storage



36" H



Detail

Periodical option

- Only the 83-9026PSP-2 has the periodical option



26" H



Credenza statement of line

60"w x 26"h



83-6026FF-2
File-file
60.25"w x 20"d x 26"h



83-6026FS-2
File-storage
60.25"w x 20"d x 26"h



83-6026SF-2
Storage-file
60.25"w x 20"d x 26"h



83-6026DD-2
Door-door
60.25"w x 20"d x 26"h



83-6026DS-2
Door-storage
60.25"w x 20"d x 26"h



83-6026SD-2
Storage-door
60.25"w x 20"d x 26"h



83-6026DSD-2
Door-storage-door
60.25"w x 20"d x 26"h



Credenza statement of line

90"w x 26"h



83-9026FSF-2
File-storage-file
89.5"w x 20"d x 26"h



83-9026DSF-2
Door-storage-file
89.5"w x 20"d x 26"h



83-9026FSD-2
File-storage-Door
89.5"w x 20"d x 26"h



83-9026DSD-2
Door-storage-door
89.5"w x 20"d x 26"h



83-9026FDS-2
File-door-storage
89.5"w x 20"d x 26"h



83-9026SDF-2
Storage-door-file
89.5"w x 20"d x 26"h



83-9026PSP-2
Periodical-storage-periodical
89.5"w x 20"d x 26"h



Credenza statement of line

60"w x 30"h



83-6030FF-2

File-file

60.25"w x 20"d x 30"h



83-6030DD-2

Door-door

60.25"w x 20"d x 30"h



83-6030FS-2

File-storage

60.25"w x 20"d x 30"h



83-6030SF-2

Storage-file

60.25"w x 20"d x 26"h



83-6030DS-2

Door-storage

60.25"w x 20"d x 26"h



83-6030SD-2

Storage-door

60.25"w x 20"d x 26"h



83-6030DSD-2

Door-storage-door

60.25"w x 20"d x 26"h



Credenza statement of line

90"w x 30"h



83-9030FSF-2
File-storage-file
89.5"w x 20"d x 30"h



83-9030FSD-2
File-storage-door
89.5"w x 20"d x 30"h



83-9030DSF-2
Door-storage-file
89.5"w x 20"d x 30"h



83-9030DSD-2
Door-storage-door
89.5"w x 20"d x 30"h

Credenza statement of line

60"w x 36"h



83-6036FW-2
File-waste
60.25"w x 20"d x 36"h



83-6036WF-2
Waste-file
60.25"w x 20"d x 36"h



83-6036DA-2
Doors-AV
60.25"w x 20"d x 36"h



83-6036AD-2
AV-door
60.25"w x 20"d x 36"h



83-6036DD-2
Door-door
60.25"w x 20"d x 36"h



83-6036WD-2
Waste-door
60.25"w x 20"d x 36"h



83-6036DW-2
Door-waste
60.25"w x 20"d x 36"h



83-6036WS-2
Waste-storage
60.25"w x 20"d x 36"h



83-6036SW-2
Storage-waste
60.25"w x 20"d x 36"h



Credenza statement of line

60"w x 36"h



83-6036AS-2
AV-storage
60.25"w x 20"d x 36"h



83-6036SA-2
Storage-AV
60.25"w x 20"d x 36"h

Credenza statement of line

90"w x 36"h



83-9036ASD-2
AV-storage-door
89.5"w x 20"d x 36"h



83-9036ASF-2
AV-storage-file
89.5"w x 20"d x 36"h



83-9036ASW-2
AV-storage-waste
89.5"w x 20"d x 36"h



83-9036DSA-2
Door-storage-AV
89.5"w x 20"d x 36"h



83-9036DSD-2
Door-storage-door
89.5"w x 20"d x 36"h



83-9036DSW-2
Door-storage-waste
89.5"w x 20"d x 36"h



83-9036FSA-2
File-storage-AV
89.5"w x 20"d x 36"h



83-9036FSW-2
File-storage-waste
89.5"w x 20"d x 36"h



83-9036WSA-2
Waste-storage-AV
89.5"w x 20"d x 36"h



Credenza statement of line

90"w x 36"h



83-9036WSD-2
Waste-storage-door
89.5"w x 20"d x 36"h



83-9036WSF-2
Waste-storage-file
89.5"w x 20"d x 36"h

Bookcase options

- Inside bookcase options are broken up into 15" & 30" increments and can be 3 30" sections or a combination of 2 15" units and 2 30" units
- Each unit has at least 1 shelf option
- Each shelf has a 1.375" gap between the back of the shelf and the back of the bookcase unit with a powdercoat lip



30" x 30" x 30"
83-9020BC222



15" x 30" x 30" x 15"
83-9020BC1221



15" x 30" x 15" x 30"
83-9020BC1212



30" x 15" x 30" x 15"
83-9020BC2121



30" x 15" x 15" x 30"
83-9020BC2112

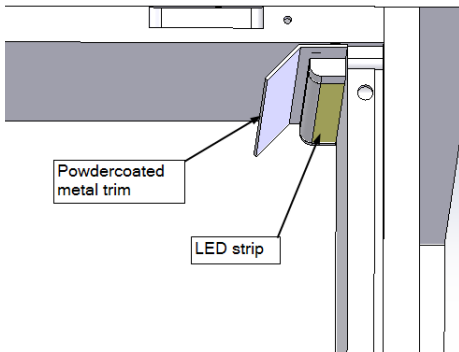
Shelf detail



Gap to back of bookcase

Bookcase light options

- A light option is available that places a flexible LED strip behind a powdercoated shield in the top of the units
- The light is 2700K

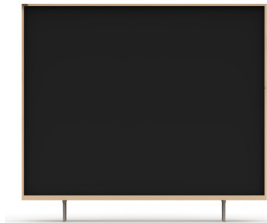


Detail

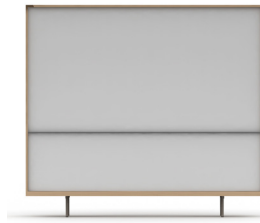


Detail

Bookcase back options



Unfinished
LW



Markerboard/markerboard
X3/X3



Markerboard/tackboard
X3/FTB

Bookcase configurations

30" opening options

- The 30" openings in bookcases have 7 configuration options
- All 30" openings can have the option of tray files in the bottom position as an option instead of open storage



ADJ1/FXD1
One adjustable shelf one
fixed shelf



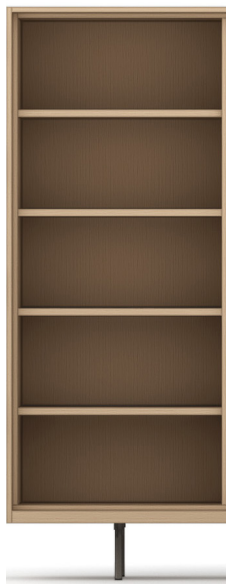
LSTG
Left hand combination
storage



RSTG
Right hand combination
storage



ADJ2/PRD1
Two adjustable shelves one
periodical



ADJ3/FXD1
Three adjustable shelves
one fixed shelf



ADJ3/PRD1
Three adjustable shelves
one periodical



ADJ1/PRD3
one adjustable shelf three
periodicals



Bookcase configurations

30" opening options

- Tray drawers can be in any 30"w location, either a single location or all of the locations



Tray drawers

LFTS - left sections, CTRS center section, RHTS Right section,
LRCS left, right, and center section

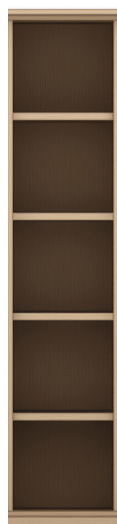
15" opening options

- 15" Wide units only have 2 configuration options



ADJ1/FXD1

One adjustable shelf one
fixed shelf



ADJ3/FXD1

Three adjustable shelves
one fixed shelf



Occasional & pull up tables

- Rowen occasional and pull up share the same metal square legs as the rest of the family
- Tops are available in round, square, and rectangular shapes
- Heights range from 9" - 20"
- Top shapes range from 16" - 48" depending on shape
- Round pull up table has disc base, square pull up tables have a x base, and rectangular pull up tables have a t base
- Pull up tables can support 66 lbs

Materiality

- Top is a solid edge- glued walnut or oak material with super matte finish can be also be painted
- Tops have a soft bullnose edge
- Square steel base available in standard and studio powdercoats

Shapes



Round



Square



Rectangular

Elevations

Round tops



83-16RD16H
16"w x 16"d x 16"h



83-18RD20H
18"w x 18"d x 20"h



83-16RD25H
16"w x 16"d x 25"h

Elevations

Square tops



83-36SQ9H
36"w x 36"d x 9"h



83-24SQ12H
24"w x 24"d x 12"h



83-36SQ16H
36"w x 36"d x 16"h



83-18SQ25H
18"w x 18"d x 25"h

Rectangular tops



83-1148RT12
11"w x 48"d x 12"h



83-1148RT16
11"w x 48"d x 16"h



83-1148RT20
11"w x 48"d x 20"h



83-16RD25H
16"w x 16"d x 25"h



83-1132RT12
11"w x 32"d x 12"h



83-1132RT20
11"w x 32"d x 20"h

Cafe tables

- Cafe tables are round, square, and rectangular shaped
- Round tables have round bases
- Square tables have square bases
- Rectangular tables have rectangular bases
- Round and square tables are available in seated (29"h) and cafe height (42"h), rectangular is only available in seated height
- Have two hooks on either side of the column base 3.5" below the table

Materiality

- Top is a solid edge- glued walnut or oak material with super matte finish can be also be painted
- Tops have a soft bullnose edge
- Square steel base available in standard and studio powdercoats

Shapes



Round



Square



Rectangular

Bag hook detail

- Bag hook rated to 20 lbs



Detail

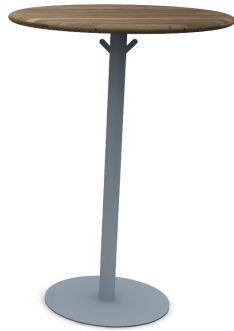


Product photography

Elevations



29" H



42" H

Round tops



24"
83-24RD29H



30"
83-30RD29H



36"
83-36RD29H

Square tops



24"
83-24SQ29H



30"
83-30SQ29H



36"
83-36SQ29H



Elevations

Rectangular tops

- Only available at desk height 29"h



30"w x 24"d
83-3024RT29H



36"w x 30"d
83-3630RT29H