



carolina
an OFS company

May 2022 Update

Effective May 16, 2022, OFS and Carolina will implement a 9% increase on list prices.
The 9% is not reflected in the January 2022 price list.

For the most accurate pricing (options, grades, etc.) please reference your eTools
(CET Designer, ProjectMatrix, 2020, etc)



carolina
an OFS company

Surcharge

Effective April 4, 2022, a 3% surcharge on net prices will be applied.



veneer

Exposed surfaces are select quartered veneers. Select close grain patterns are used overall to maintain consistency between individual units. Grain runs horizontal on all vertical surfaces.

tops

Conference tops are 1.5" thick and utilize 3-ply construction with edge veneer. Conference tables and extension work surfaces have a square edge. Under-top mending plates and butterfly bolts ensure permanent connection on multiple piece tops. Tops are 1.5" thick and are supported with stretcher rails. Multi-piece tops are joined together with metal plates and wood screws.

file drawers

All file drawers accommodate letter or legal filing. Filing hardware is black powder coated to prevent corrosion.

drawer construction

0.4375" thick unidirectional plywood drawer sides and backs are assembled using dovetail construction. Drawers feature 0.25" thick drawer bottoms. Drawer interiors are sanded and finished.

drawer suspension

High quality drawer suspensions carry a lifetime warranty. Credenza drawers are full-extension touch release suspensions. Zinc plated suspension systems feature steel ball bearings to ensure a smooth ride.

finish options

Veneer

Quartered

MRO Linen
MBM Blonde
MMH Honey
DST Desert
PCO Pecan
MNW Root

MLC Sienna
MGW Toffee
MMC Mocha
MGO Steel
BUW Burnished
EBY Ebony

Paint

WHT White

DOUBLE SIDED WALL UNIT STANDARD FEATURES

CMA-54DW22 and CMA-60DW22

UPPER SECTION:

- [Bar Height](#) Overlay Panel Each Side
- **Must** use with Two Bar Height Tops (see page 699)
- TV Mount Area Each Side
CMA-54DW22 - 53.5"W x 38.25"H
CMA-60DW22 - 59.5"W x 38.25"H
- Optional Slide Out Markerboards with Overlay Panel (Two Each Side), Unfinished Back
- Markerboard must be used with 24" or 30"W End Units. See pages 702 and 704.

LOWER SECTION:

- Three Touch Release Doors Each Side
- Wire Management behind Center Door
- 7.6875"D Storage behind Each End Door
- Adjustable Shelf behind Each Door

CMA-54DW23 and CMA-60DW23

UPPER SECTION:

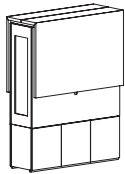
- [Bar Height](#) Overlay Panel One Side
- **Must** use with One Bar Height Top (see page 699)
- TV Mount Area
CMA-54DW23 - 53.5"W x 38.25"H
CMA-60DW23 - 59.5"W x 38.25"H
- Optional Slide Out Markerboards with Overlay Panel (Two Each Side), Unfinished Back
- Markerboard must be used with 24" or 30"W End Units. See pages 702 and 704.

LOWER SECTION:

- [Desk Height](#) Overlay Panel One Side
- **Must** use with One Desk Height Top (see page 702)
- TV Mount Area
CMA-54DW23 - 53.5"W x 50.75"H
CMA-60DW23 - 59.5"W x 50.75"H
- Optional Slide Out Markerboards with Overlay Panel (Two Each Side), Unfinished Back
- Markerboard must be used with 24" or 30"W End Units. See pages 702 and 704.

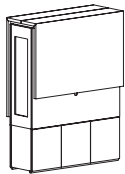
NOTES:

- Unfinished Ends. **Must** Order with End Units or End Panel. See pages 702-705.
- TV and TV Mounts not included
- Not Compatible with Extendable Arm TV Mounts
- Horizontal Grain Direction (Quartered)



model	w	d	h	wt	cu ft	list
CMA-54DW22	53.5	24	80	400	96	\$ 12,934
CMA-60DW22	59.5	24	80	425	106	\$ 13,685

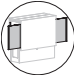
- Must be used with Two End Panels or End Units. See notes under Markerboard option below.
- Must be used with Two Bar Height Tops (see page 699).



model	w	d	h	wt	cu ft	list
CMA-54DW23	53.5	24	80	400	102	\$ 13,186
CMA-60DW23	59.5	24	80	425	113	\$ 13,934

- Must be used with Two End Panels or End Units. See notes under Markerboard option below.
- Must be used with One Bar Height Top (see page 699).

OPTIONS

Overlay Finish	Chassis Finish	Markerboard
Veneer <i>Quartered</i> OSL MHM MNW MMC EBY MRO DST MLC MGO MBM PCO MGW BUW Paint WHT	Veneer <i>Quartered</i> OSL MHM MNW MMC EBY MRO DST MLC MGO MBM PCO MGW BUW	X9 No Markerboard - Standard NOTE: Must be used with two end panels or end units (see pages 702-705).  X3 White \$2,655 A9B White Backed Glass \$5,147 NOTE: Must be used with two 24" or 30"W end units (see pages 702 and 704).

HOW TO ORDER

SPECIFY: Overlay finish | chassis finish | markerboard. See page 688 for the designator finish name.

MODEL NUMBER

CMA-54DW22

Overlay Finish	Chassis Finish	Markerboard
OSL	OSL	X9

DOUBLE SIDED WALL UNIT STANDARD FEATURES

CMA-54DW25 and CMA-60DW25

UPPER SECTION:

- Bar Height Overlay Panel One Side
- **Must** use with One Bar Height Top (see page 699)
- TV Mount Area
CMA-54DW25 - 53.5"W x 38.25"H
CMA-60DW25 - 59.5"W x 38.25"H
- Optional Slide Out Markerboards with Overlay Panel (Two Each Side), Unfinished Back
- Markerboard must be used with 24" or 30"W End Units. See pages 702 and 704.

LOWER SECTION:

- Overlay Panel One Side
- TV Mount Area
CMA-54DW25 - 53.5"W x 56.25"H
CMA-60DW25 - 59.5"W x 56.25"H
- Optional Slide Out Markerboards with Overlay Panel (Two Each Side), Unfinished Back
- Markerboard must be used with 24" or 30"W End Units. See pages 702 and 704.

CMA-54DW33 and CMA-60DW33

UPPER SECTION:

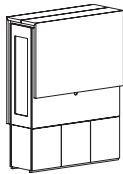
- Desk Height Overlay Panel Each Side
- **Must** use with Two Desk Height Tops (see pages 702-703)
- TV Mount Area Each Side
CMA-54DW33 - 53.5"W x 50.75"H
CMA-60DW33 - 59.5"W x 50.75"H
- Optional Slide Out Markerboards with Overlay Panel (Two Each Side), Unfinished Back
- Markerboard must be used with 24" or 30"W End Units. See pages 702 and 704.

LOWER SECTION:

- Three Touch Release Doors Each Side
- Wire Management behind Center Door
- 7.6875"D Storage behind Each End Door
- Adjustable Shelf behind Each Door

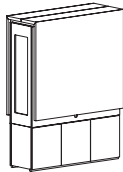
NOTES:

- Unfinished Ends. **Must** Order with End Units or End Panel. See pages 702-705.
- TV and TV Mounts not included
- Not Compatible with Extendable Arm TV Mounts
- Horizontal Grain Direction (Quartered)



model	w	d	h	wt	cu ft	list
CMA-54DW25	53.5	24	80	400	104	\$ 13,193
CMA-60DW25	59.5	24	80	425	115	\$ 13,941

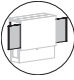
- Must be used with Two End Panels or End Units. See notes under Markerboard option below.
- Must be used with One Bar Height Top (see page 699).



model	w	d	h	wt	cu ft	list
CMA-54DW33	53.5	24	80	400	107	\$ 13,434
CMA-60DW33	59.5	24	80	425	119	\$ 14,185

- Must be used with Two End Panels or End Units. See notes under Markerboard option below.
- Must be used with Two Desk Height Tops (see pages 702-703).

OPTIONS

Overlay Finish	Chassis Finish	Markerboard
Veneer <i>Quartered</i> OSL MHM MNW MMC EBY MRO DST MLC MGO MBM PCO MGW BUW Paint WHT	Veneer <i>Quartered</i> OSL MHM MNW MMC EBY MRO DST MLC MGO MBM PCO MGW BUW	X9 No Markerboard - Standard NOTE: Must be used with two end panels or end units (see pages 702-705).  X3 White \$2,655 A9B White Backed Glass \$5,147 NOTE: Must be with two 24" or 30"W end units (see pages 702 and 704).

HOW TO ORDER

SPECIFY: Overlay finish | chassis finish | markerboard. See page 688 for the designator finish name.

MODEL NUMBER

CMA-54DW25

Overlay Finish	Chassis Finish	Markerboard
OSL	OSL	X9

DOUBLE SIDED WALL UNIT STANDARD FEATURES

UPPER SECTION:

- Desk Height Overlay Panel One Side
- **Must** use with One Desk Height Top (see pages 702-703)
- TV Mount Area
CMA-54DW35 - 53.5"W x 50.75"H
CMA-60DW35 - 59.5"W x 50.75"H
- Optional Slide Out Markerboards with Overlay Panel (Two Each Side), Unfinished Back
- Markerboard must be used with 24" or 30"W End Units. See pages 702 and 704.

• Overlay Panel One Side

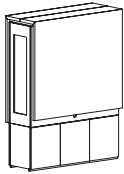
- TV Mount Area
CMA-54DW35 - 53.5"W x 56.25"H
CMA-60DW35 - 59.5"W x 56.25"H
- Optional Slide Out Markerboards with Overlay Panel (Two Each Side), Unfinished Back
- Markerboard must be used with 24" or 30"W End Units. See pages 702 and 704.

LOWER SECTION:

- Three Touch Release Doors Each Side
- Wire Management behind Center Door
- 7.6875"D Storage behind Each End Door
- Adjustable Shelf behind Each Door

NOTES:

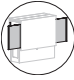
- Unfinished Ends. **Must** Order with End Units or End Panel. See pages 702-705
- TV and TV Mounts not included
- Not Compatible with Extendable Arm TV Mounts
- Horizontal Grain Direction (Quartered)



model	w	d	h	wt	cu ft	list
CMA-54DW35	53.5	24	80	400	109	\$ 13,442
CMA-60DW35	59.5	24	80	425	121	\$ 14,192

- Must be used with Two End Panels or End Units. See notes under Markerboard option below.
- Must be used with One Desk Height Top (see pages 702-703).

OPTIONS

Overlay Finish	Chassis Finish	Markerboard
Veneer <i>Quartered</i> OSL MHM MNW MMC EBY MRO DST MLC MGO MBM PCO MGW BUW Paint WHT	Veneer <i>Quartered</i> OSL MHM MNW MMC EBY MRO DST MLC MGO MBM PCO MGW BUW	X9 No Markerboard - Standard NOTE: Must be used with two end panels or end units (see pages 702-705).  X3 White \$2,655 A9B White Backed Glass \$5,147 NOTE: Must be with two 24" or 30"W end units (see pages 702 and 704).

HOW TO ORDER

SPECIFY: Overlay finish | chassis finish | markerboard. See page 688 for the designator finish name.

MODEL NUMBER

CMA-54DW35

Overlay Finish	Chassis Finish	Markerboard
OSL	OSL	X9

DOUBLE SIDED WALL UNIT STANDARD FEATURES

CMA-54DW55, CMA-60DW55 and CMA-66DW55 UPPER SECTION:

- Overlay Panel Each Side
- TV Mount Area Each Side
CMA-54DW55 - 53.5"W x 56.25"H
CMA-60DW55 - 59.5"W x 56.25"H
CMA-66DW55 - 65.5"W x 56.25"H
- Optional Slide Out Markerboards with Overlay Panel (Two Each Side), Unfinished Back
- Markerboard must be used with 24" or 30"W End Units. See pages 702 and 704.

LOWER SECTION:

- Three Touch Release Doors Each Side
- Wire Management behind Center Door
- 7.6875"D Storage behind Each End Door
- Adjustable Shelf behind Each Door

CMA-72DW55 and CMA-78DW55 UPPER SECTION:

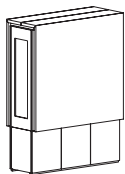
- Overlay Panel Each Side
- TV Mount Area Each Side
CMA-72DW55 - 71.5"W x 56.25"H
CMA-78DW55 - 77.5"W x 56.25"H
- Optional Slide Out Markerboards with Overlay Panel (Two Each Side), Unfinished Back
- Markerboard must be used with 24" or 30"W End Units. See pages 702 and 704.

LOWER SECTION:

- Four Touch Release Doors Each Side
- Wire Management behind Center Doors
- 7.6875"D Storage behind Each End Door
- Adjustable Shelf behind Each Door

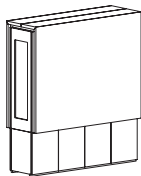
NOTES:

- Unfinished Ends. **Must** Order with End Units or End Panel. See pages 702-705.
- TV and TV Mounts not included
- Not Compatible with Extendable Arm TV Mounts
- Not Compatible with Bar or Desk Height Tops and Bases
- Horizontal Grain Direction (Quartered)



model	w	d	h	wt	cu ft	list
CMA-54DW55	53.5	24	80	400	111	\$ 13,392
CMA-60DW55	59.5	24	80	425	123	\$ 14,143
CMA-66DW55	65.5	24	80	450	135	\$ 14,891

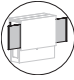
- Must be used with Two End Panels or End Units. See notes under Markerboard option below.



model	w	d	h	wt	cu ft	list
CMA-72DW55	71.5	24	80	475	147	\$ 15,819
CMA-78DW55	77.5	24	80	500	159	\$ 16,746

- Must be used with Two End Panels or End Units. See notes under Markerboard option below.

OPTIONS

Overlay Finish	Chassis Finish	Markerboard
Veneer <i>Quartered</i> OSL MHM MNW MMC EBY MRO DST MLC MGO MBM PCO MGW BUW Paint WHT	Veneer <i>Quartered</i> OSL MHM MNW MMC EBY MRO DST MLC MGO MBM PCO MGW BUW	X9 No Markerboard - Standard NOTE: Must be used with two end panels or end units (see pages 702-705).  X3 White \$2,655 A9B White Backed Glass \$5,147 NOTE: Must be with two 24" or 30"W end units (see pages 702 and 704).

HOW TO ORDER

SPECIFY: Overlay finish | chassis finish | markerboard. See page 688 for the designator finish name.

MODEL NUMBER

CMA-54DW55

Overlay Finish	Chassis Finish	Markerboard
OSL	OSL	X9

DOUBLE SIDED WALL UNIT STANDARD FEATURES

CMA-54DW24 and CMA-60DW24

UPPER SECTION:

- Bar Height Overlay Panel One Side
- **Must** use with One Bar Height Top (see page 699)
- TV Mount Area
CMA-54DW24 - 53.5"W x 38.25"H
CMA-60DW24 - 59.5"W x 38.25"H
- Optional Slide Out Markerboards with Overlay Panel (Two Each Side), Unfinished Back
- Markerboard must be used with 24" or 30"W End Units. See pages 702 and 704.
- Overlay Panel and Three Tray Drawers with Finger Pull One Side
- TV Mount Area
CMA-54DW24 - 53.5"W x 50.25"H
CMA-60DW24 - 59.5"W x 50.25"H
- Optional Slide Out Markerboards with Overlay Panel (Two Each Side), Unfinished Back
- Markerboard must be used with 24" or 30"W End Units. See pages 702 and 704.

LOWER SECTION:

- Three Touch Release Doors Each Side
- Wire Management behind Center Door
- 7.6875"D Storage behind Each End Door
- Adjustable Shelf behind Each Door

CMA-54DW34 and CMA-60DW34

UPPER SECTION:

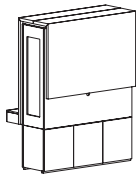
- Desk Height Overlay Panel One Side
- **Must** use with One Desk Height Top (see pages 702-703)
- TV Mount Area
CMA-54DW34 - 53.5"W x 50.75"H
CMA-60DW34 - 59.5"W x 50.75"H
- Optional Slide Out Markerboards with Overlay Panel (Two Each Side), Unfinished Back
- Markerboard must be used with 24" or 30"W End Units. See pages 702 and 704.
- Overlay Panel and Three Tray Drawers with Finger Pull One Side
- TV Mount Area
CMA-54DW34 - 53.5"W x 50.25"H
CMA-60DW34 - 59.5"W x 50.25"H
- Optional Slide Out Markerboards with Overlay Panel (Two Each Side), Unfinished Back
- Markerboard must be used with 24" or 30"W End Units. See pages 702 and 704.

LOWER SECTION:

- Three Touch Release Doors Each Side
- Wire Management behind Center Door
- 7.6875"D Storage behind Each End Door
- Adjustable Shelf behind Each Door

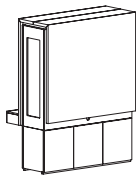
NOTES:

- Unfinished Ends. **Must** Order with End Units or End Panel. See pages 702-705.
- TV and TV Mounts not included
- Not Compatible with Extendable Arm TV Mounts
- Horizontal Grain Direction (Quartered)



model	w	d	h	wt	cu ft	list
CMA-54DW24	53.5	34	80	425	104	\$ 14,618
CMA-60DW24	59.5	34	80	450	115	\$ 15,368

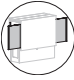
- Must be used with Two End Panels or End Units. See notes under Markerboard option below.
- Must be used with One Bar Height Top (see page 699).



model	w	d	h	wt	cu ft	list
CMA-54DW34	53.5	34	80	425	109	\$ 14,869
CMA-60DW34	59.5	34	80	450	121	\$ 15,617

- Must be used with Two End Panels or End Units. See notes under Markerboard option below.
- Must be used with One Desk Height Top (see pages 702-703).

OPTIONS

Overlay Finish	Chassis Finish	Markerboard
Veneer Quartered OSL MHM MNW MMC EBY MRO DST MLC MGO MBM PCO MGW BUW Paint WHT	Veneer Quartered OSL MHM MNW MMC EBY MRO DST MLC MGO MBM PCO MGW BUW	X9 No Markerboard - Standard NOTE: Must be used with two end panels or end units (see pages 702-705).  X3 White \$2,655 A9B White Backed Glass \$5,147 NOTE: Must be with two 24" or 30"W end units (see pages 702 and 704).

HOW TO ORDER

SPECIFY: Overlay finish | chassis finish | markerboard. See page 688 for the designator finish name.

MODEL NUMBER

CMA-54DW24

Overlay Finish	Chassis Finish	Markerboard
OSL	OSL	X9

DOUBLE SIDED WALL UNIT STANDARD FEATURES

CMA-54DW45, CMA-60DW45 and CMA-66DW45
UPPER SECTION:

- Overlay Panel and Three Tray Drawers with Finger Pull One Side
- TV Mount Area
CMA-54DW45 - 53.5"W x 50.25"H
CMA-60DW45 - 59.5"W x 50.25"H
CMA-66DW45 - 65.5"W x 50.25"H
- Optional Slide Out Markerboards with Overlay Panel (Two Each Side), Unfinished Back
- Markerboard must be used with 24" or 30"W End Units. See pages 702 and 704.
- Overlay Panel One Side
- TV Mount Area
CMA-54DW45 - 53.5"W x 56.25"H
CMA-60DW45 - 59.5"W x 56.25"H
CMA-66DW45 - 65.5"W x 56.25"H
- Optional Slide Out Markerboards with Overlay Panel (Two Each Side), Unfinished Back
- Markerboard must be used with 24" or 30"W End Units. See pages 702 and 704.

LOWER SECTION:

- Three Touch Release Doors Each Side
- Wire Management behind Center Door
- 7.6875"D Storage behind Each End Door
- Adjustable Shelf behind Each Door

CMA-72DW45 and CMA-78DW45
UPPER SECTION:

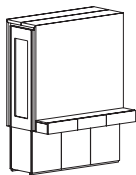
- Overlay Panel and Four Tray Drawers with Finger Pull One Side
- TV Mount Area
CMA-72DW45 - 71.5"W x 50.25"H
CMA-78DW45 - 77.5"W x 50.25"H
- Optional Slide Out Markerboards with Overlay Panel (Two Each Side), Unfinished Back
- Markerboard must be used with 24" or 30"W End Units. See pages 702 and 704.
- Overlay Panel One Side
- TV Mount Area
CMA-72DW45 - 71.5"W x 56.25"H
CMA-78DW45 - 77.5"W x 56.25"H
- Optional Slide Out Markerboards with Overlay Panel (Two Each Side), Unfinished Back
- Markerboard must be used with 24" or 30"W End Units. See pages 702 and 704.

LOWER SECTION:

- Four Touch Release Doors Each Side
- Wire Management behind Center Doors
- 7.6875"D Storage behind Each End Door
- Adjustable Shelf behind Each Door

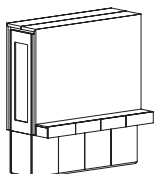
NOTES:

- Unfinished Ends. **Must** Order with End Units or End Panel. See pages 702-705.
- TV and TV Mounts not included
- Not Compatible with Extendable Arm TV Mounts
- Not Compatible with Bar or Desk Height Tops and Bases
- Horizontal Grain Direction (Quartered)



model	w	d	h	wt	cu ft	list
CMA-54DW45	53.5	34	80	425	111	\$ 14,818
CMA-60DW45	59.5	34	80	450	123	\$ 15,570
CMA-66DW45	65.5	34	80	475	135	\$ 16,317

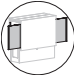
- Must be used with Two End Panels or End Units. See notes under Markerboard option below.



model	w	d	h	wt	cu ft	list
CMA-72DW45	71.5	34	80	500	147	\$ 17,247
CMA-78DW45	77.5	34	80	525	159	\$ 18,172

- Must be used with Two End Panels or End Units. See notes under Markerboard option below.

OPTIONS

Overlay Finish	Chassis Finish	Markerboard
Veneer Quartered OSL MHM MNW MMC EBY MRO DST MLC MGO MBM PCO MGW BUW Paint WHT	Veneer Quartered OSL MHM MNW MMC EBY MRO DST MLC MGO MBM PCO MGW BUW	X9 No Markerboard - Standard NOTE: Must be used with two end panels or end units (see pages 702-705).  X3 White \$2,655 A9B White Backed Glass \$5,147 NOTE: Must be with two 24" or 30"W end units (see pages 702 and 704).

HOW TO ORDER

SPECIFY: Overlay finish | chassis finish | markerboard. See page 688 for the designator finish name.

MODEL NUMBER

CMA-54DW45

Overlay Finish	Chassis Finish	Markerboard
OSL	OSL	X9

DOUBLE SIDED WALL UNIT STANDARD FEATURES

CMA-54DW44, CMA-60DW44 and CMA-66DW44 UPPER SECTION:

- **Overlay** Panel and Three Tray Drawers with Finger Pull Each Side
- TV Mount Area Each Side
CMA-54DW44 - 53.5"W x 50.25"H
CMA-60DW44 - 59.5"W x 50.25"H
CMA-66DW44 - 65.5"W x 50.25"H
- Optional Slide Out Markerboards with Overlay Panel (Two Each Side), Unfinished Back
- Markerboard must be used with 24" or 30"W End Units. See pages 702 and 704.

LOWER SECTION:

- Three Touch Release Doors Each Side
- Wire Management behind Center Door
- 7.6875"D Storage behind Each End Door
- Adjustable Shelf behind Each Door

CMA-72DW44 and CMA-78DW44 UPPER SECTION:

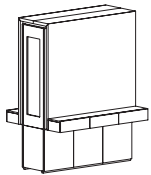
- **Overlay** Panel and Four Tray Drawers with Finger Pull Each Side
- TV Mount Area Each Side
CMA-72DW44 - 71.5"W x 50.25"H
CMA-78DW44 - 77.5"W x 50.25"H
- Optional Slide Out Markerboards with Overlay Panel (Two Each Side), Unfinished Back
- Markerboard must be used with 24" or 30"W End Units. See pages 702 and 704.

LOWER SECTION:

- Four Touch Release Doors Each Side
- Wire Management behind Center Doors
- 7.6875"D Storage behind Each End Door
- Adjustable Shelf behind Each Door

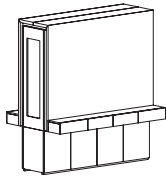
NOTES:

- Unfinished Ends. **Must** Order with End Units or End Panel. See pages 702-705.
- TV and TV Mounts not included
- Not Compatible with Extendable Arm TV Mounts
- Not Compatible with Bar or Desk Height Tops and Bases
- Horizontal Grain Direction (Quartered)



model	w	d	h	wt	cu ft	list
CMA-54DW44	53.5	44	80	450	111	\$ 16,247
CMA-60DW44	59.5	44	80	475	123	\$ 16,996
CMA-66DW44	65.5	44	80	500	135	\$ 17,743

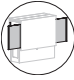
- Must be used with Two End Panels or End Units. See notes under Markerboard option below.



model	w	d	h	wt	cu ft	list
CMA-72DW44	71.5	44	80	525	147	\$ 18,672
CMA-78DW44	77.5	44	80	550	159	\$ 19,599

- Must be used with Two End Panels or End Units. See notes under Markerboard option below.

OPTIONS

Overlay Finish	Chassis Finish	Markerboard
Veneer <i>Quartered</i> OSL MHM MNW MMC EBY MRO DST MLC MGO MBM PCO MGW BUW Paint WHT	Veneer <i>Quartered</i> OSL MHM MNW MMC EBY MRO DST MLC MGO MBM PCO MGW BUW	X9 No Markerboard - Standard NOTE: Must be used with two end panels or end units (see pages 702-705).  X3 White \$2,655 A9B White Backed Glass \$5,147 NOTE: Must be with two 24" or 30"W end units (see pages 702 and 704).

HOW TO ORDER

SPECIFY: Overlay finish | chassis finish | markerboard. See page 688 for the designator finish name.

MODEL NUMBER

CMA-54DW44

Overlay Finish	Chassis Finish	Markerboard
OSL	OSL	X9

SINGLE SIDED WALL UNIT STANDARD FEATURES

CMA-54SW2 and CMA-60SW2

UPPER SECTION:

- Bar Height Overlay Panel
- **Must** use with Bar Height Top (see page 699)
- TV Mount Area
CMA-54SW2 - 53.5"W x 38.25"H
CMA-60SW2 - 59.5"W x 38.25"H
- Optional Slide Out Markerboards with Overlay Panel, Unfinished Back
- Markerboard must be used with 24" or 30"W End Units. See pages 702 and 704.

LOWER SECTION:

- Three Touch Release Doors
- Wire Management behind Center Door
- Adjustable Shelf behind Each Door
- Unfinished Back, for use Against Wall

CMA-54SW3 and CMA-60SW3

UPPER SECTION:

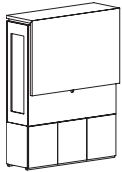
- Desk Height Overlay Panel
- **Must** use with Desk Height Top (see pages 699 and 702)
- TV Mount Area
CMA-54SW3 - 53.5"W x 50.75"H
CMA-60SW3 - 59.5"W x 50.75"H
- Optional Slide Out Markerboards with Overlay Panel, Unfinished Back
- Markerboard must be used with 24" or 30"W End Units. See pages 702 and 704.

LOWER SECTION:

- Three Touch Release Doors
- Wire Management behind Center Door
- Adjustable Shelf behind Each Door
- Unfinished Back, for use Against Wall

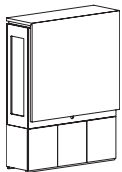
NOTES:

- Unfinished Ends. **Must** Order with End Units or End Panel. See pages 702-705.
- TV and TV Mounts not included
- Not Compatible with Extendable Arm TV Mounts
- Horizontal Grain Direction (Quartered)



model	w	d	h	wt	cu ft	list
CMA-54SW2	53.5	21	80	300	87	\$ 9,037
CMA-60SW2	59.5	21	80	325	96	\$ 9,643

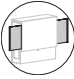
- Must be used with Two End Panels or End Units. See notes under Markerboard option below.
- Must be used with One Bar Height Top (see page 699).



model	w	d	h	wt	cu ft	list
CMA-54SW3	53.5	21	80	300	96	\$ 9,286
CMA-60SW3	59.5	21	80	325	106	\$ 9,893

- Must be used with Two End Panels or End Units. See notes under Markerboard option below.
- Must be used with One Desk Height Top (see pages 702-703).

OPTIONS

Overlay Finish	Chassis Finish	Markerboard
Veneer <i>Quartered</i> OSL MHM MNW MMC EBY MRO DST MLC MGO MBM PCO MGW BUW Paint WHT	Veneer <i>Quartered</i> OSL MHM MNW MMC EBY MRO DST MLC MGO MBM PCO MGW BUW	X9 No Markerboard - Standard NOTE: Must be used with two end panels or end units (see pages 702-705).  X3 White \$1,328 A9B White Backed Glass \$2,574 NOTE: Must be with two 24" or 30"W end units (see pages 702 and 704).

HOW TO ORDER

SPECIFY: Overlay finish | chassis finish | markerboard. See page 688 for the designator finish name.

MODEL NUMBER

CMA-54SW2

Overlay Finish	Chassis Finish	Markerboard
OSL	OSL	X9

SINGLE SIDED WALL UNIT STANDARD FEATURES

CMA-54SW5, CMA-60SW5 and CMA-66SW5 UPPER SECTION:

- [Overlay](#) Panel
- TV Mount Area
CMA-54SW5 - 53.5"W x 56.25"H
CMA-60SW5 - 59.5"W x 56.25"H
CMA-66SW5 - 65.5"W x 56.25"H
- Optional Slide Out Markerboards with Overlay Panel, Unfinished Back
- Markerboard must be used with 24" or 30"W End Units. See pages 702 and 704.

LOWER SECTION:

- Three Touch Release Doors
- Wire Management behind Center Door
- Adjustable Shelf behind Each Door
- Unfinished Back, for use Against Wall

CMA-72SW5 and CMA-78SW5 UPPER SECTION:

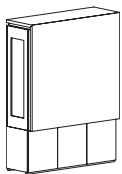
- [Overlay](#) Panel
- TV Mount Area
CMA-72SW5 - 71.5"W x 56.25"H
CMA-78SW5 - 77.5"W x 56.25"H
- Optional Slide Out Markerboards with Overlay Panel, Unfinished Back
- Markerboard must be used with 24" or 30"W End Units. See pages 702 and 704.

LOWER SECTION:

- Four Touch Release Doors
- Wire Management behind Center Doors
- Adjustable Shelf behind Each Door
- Unfinished Back, for use Against Wall

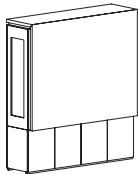
NOTES:

- Unfinished Ends. **Must** Order with End Units or End Panel. See pages 702-705.
- TV and TV Mounts not included
- Not Compatible with Extendable Arm TV Mounts
- Not Compatible with Bar or Desk Height Tops and Bases
- Horizontal Grain Direction (Quartered)



model	w	d	h	wt	cu ft	list
CMA-54SW5	53.5	21	80	300	99	\$ 9,295
CMA-60SW5	59.5	21	80	325	110	\$ 9,900
CMA-66SW5	65.5	21	80	350	120	\$ 10,506

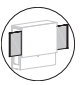
- Must be used with Two End Panels or End Units. See notes under Markerboard option below.



model	w	d	h	wt	cu ft	list
CMA-72SW5	71.5	21	80	375	131	\$ 11,290
CMA-78SW5	77.5	21	80	400	141	\$ 12,076

- Must be used with Two End Panels or End Units. See notes under Markerboard option below.

OPTIONS

Overlay Finish	Chassis Finish	Markerboard
Veneer <i>Quartered</i> OSL MHM MNW MMC EBY MRO DST MLC MGO MBM PCO MGW BUW Paint WHT	Veneer <i>Quartered</i> OSL MHM MNW MMC EBY MRO DST MLC MGO MBM PCO MGW BUW	X9 No Markerboard - Standard NOTE: Must be used with two end panels or end units (see pages 702-705).  X3 White \$1,328 A9B White Backed Glass \$2,574 NOTE: Must be with two 24" or 30"W end units (see pages 702 and 704).

HOW TO ORDER

SPECIFY: Overlay finish | chassis finish | markerboard. See page 688 for the designator finish name.

MODEL NUMBER

CMA-54SW5

Overlay Finish	Chassis Finish	Markerboard
OSL	OSL	X9

SINGLE SIDED WALL UNIT STANDARD FEATURES

CMA-54SW4, CMA-60SW4 and CMA-66SW4 UPPER SECTION:

- Overlay Panel and Three Tray Drawers with Finger Pull
- TV Mount Area
CMA-54SW4 - 53.5"W x 50.25"H
CMA-60SW4 - 59.5"W x 50.25"H
CMA-66SW4 - 65.5"W x 50.25"H
- Optional Slide Out Markerboards with Overlay Panel, Unfinished Back
- Markerboard must be used with 24" or 30"W End Units. See pages 702 and 704.

LOWER SECTION:

- Three Touch Release Doors
- Wire Management behind Center Door
- Adjustable Shelf behind Each Door
- Unfinished Back, for use Against Wall

CMA-72SW4 and CMA-78SW4 UPPER SECTION:

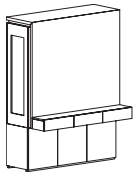
- Overlay Panel and Four Tray Drawers with Finger Pull
- TV Mount Area
CMA-72SW4 - 71.5"W x 50.25"H
CMA-78SW4 - 77.5"W x 50.25"H
- Optional Slide Out Markerboards with Overlay Panel, Unfinished Back
- Markerboard must be used with 24" or 30"W End Units. See pages 702 and 704.

LOWER SECTION:

- Four Touch Release Doors
- Wire Management behind Center Doors
- Adjustable Shelf behind Each Door
- Unfinished Back, for use Against Wall

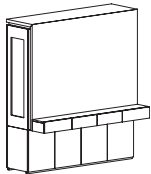
NOTES:

- Unfinished Ends. **Must** Order with End Units or End Panel. See pages 702-705.
- TV and TV Mounts not included
- Not Compatible with Extendable Arm TV Mounts
- Not Compatible with Bar or Desk Height Tops and Bases
- Horizontal Grain Direction (Quartered)



model	w	d	h	wt	cu ft	list
CMA-54SW4	53.5	31	80	350	99	\$ 10,721
CMA-60SW4	59.5	31	80	375	110	\$ 11,327
CMA-66SW4	65.5	31	80	400	120	\$ 11,933

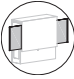
- Must be used with Two End Panels or End Units. See notes under Markerboard option below.



model	w	d	h	wt	cu ft	list
CMA-72SW4	71.5	31	80	425	131	\$ 12,719
CMA-78SW4	77.5	31	80	450	141	\$ 13,503

- Must be used with Two End Panels or End Units. See notes under Markerboard option below.

OPTIONS

Overlay Finish	Chassis Finish	Markerboard
Veneer <i>Quartered</i> OSL MHM MNW MMC EBY MRO DST MLC MGO MBM PCO MGW BUW Paint WHT	Veneer <i>Quartered</i> OSL MHM MNW MMC EBY MRO DST MLC MGO MBM PCO MGW BUW	X9 No Markerboard - Standard NOTE: Must be used with two end panels or end units (see pages 702-705).  X3 White \$1,328 A9B White Backed Glass \$2,574 NOTE: Must be with two 24" or 30"W end units (see pages 702 and 704).

HOW TO ORDER

SPECIFY: Overlay finish | chassis finish | markerboard. See page 688 for the designator finish name.

MODEL NUMBER

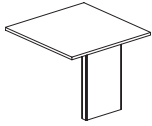
CMA-54SW4

Overlay Finish	Chassis Finish	Markerboard
OSL	OSL	X9

BAR HEIGHT TOP WITH BASE STANDARD FEATURES

- Inset Panel Base
- Adjustable Glides
- Use with Double or Single Sided Wall Units with Bar Height Overlay
- Top - Short Grain Runs from Side to Side
Base - Grain Runs Horizontal
- Ships KD

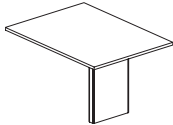
SQUARE



model	w	d	h	wt	cu ft	list
CMA-54ESTP2	53.5	54	41.75	200	15	\$ 4,536
CMA-60ESTP2	59.5	60	41.75	230	18	\$ 4,824

- Use with Double or Single Sided Wall Units with Bar Height Overlay

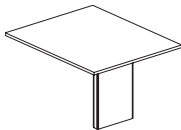
RECTANGULAR



model	w	d	h	wt	cu ft	list
CMA-5472ERTP2	53.5	72	41.75	231	20	\$ 4,942
CMA-5484ERTP2	53.5	84	41.75	260	23	\$ 5,443
CMA-5496ERTP2	53.5	96	41.75	289	26	\$ 5,946

- Use with Double or Single Sided Wall Units with Bar Height Overlay

RECTANGULAR



model	w	d	h	wt	cu ft	list
CMA-6072ERTP2	59.5	72	41.75	259	22	\$ 5,162
CMA-6084ERTP2	59.5	84	41.75	292	25	\$ 5,703
CMA-6096ERTP2	59.5	96	41.75	324	29	\$ 6,241

- Use with Double or Single Sided Wall Units with Bar Height Overlay

OPTIONS

Finish	Power Cutout
Veneer <i>Quartered</i> OSL MHM MNW MMC EBY MRO DST MLC MGO MBM PCO MGW BUW Paint WHT	X9 No Cutout - Standard G1L Power Cutout Centered on Connecting End NOTE: Power supplies must be ordered separately. Use PS-79B, PS-79S, PS-80B or PS-80S only on page 712.

HOW TO ORDER 0

SPECIFY: Finish | power cutout. See page 688 for the designator finish name.

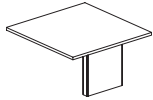
MODEL NUMBER

CMA-54ESTP2

Finish	Power Cutout
OSL	X9

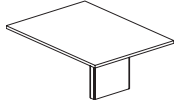
DESK HEIGHT TOP WITH BASE STANDARD FEATURES

- Inset Panel Base
- Adjustable Glides
- Use with Double or Single Sided Wall Units with Desk Height Overlay
- Top - Short Grain Runs from Side to Side
Base - Grain Runs Horizontal
- Ships KD

SQUARE


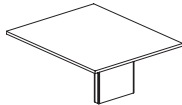
model	w	d	h	wt	cu ft	list
CMA-54ESTP3	53.5	54	29.25	190	15	\$ 4,201
CMA-60ESTP3	59.5	60	29.25	220	18	\$ 4,489

- Use with Double or Single Sided Wall Units with Desk Height Overlay

RECTANGULAR


model	w	d	h	wt	cu ft	list
CMA-5472ERTP3	53.5	72	29.25	221	20	\$ 4,605
CMA-5484ERTP3	53.5	84	29.25	250	23	\$ 5,106
CMA-5496ERTP3	53.5	96	29.25	279	26	\$ 5,611

- Use with Double or Single Sided Wall Units with Desk Height Overlay

RECTANGULAR


model	w	d	h	wt	cu ft	list
CMA-6072ERTP3	59.5	72	29.25	249	22	\$ 4,827
CMA-6084ERTP3	59.5	84	29.25	282	25	\$ 5,367
CMA-6096ERTP3	59.5	96	29.25	314	29	\$ 5,907

- Use with Double or Single Sided Wall Units with Desk Height Overlay

OPTIONS

Finish	Power Cutout
Veneer <i>Quartered</i> OSL MHM MNW MMC EBY MRO DST MLC MGO MBM PCO MGW BUW Paint WHT	X9 No Cutout - Standard G1L Power Cutout Centered on Connecting End NOTE: Power supplies must be ordered separately. Use PS-79B, PS-79S, PS-80B or PS-80S only on page 712.

HOW TO ORDER

SPECIFY: Finish | power cutout. See page 688 for the designator finish name.

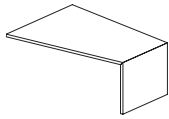
MODEL NUMBER

CMA-54ESTP3

Finish	Power Cutout
OSL	X9

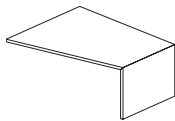
TRAPEZOID DESK HEIGHT TOP WITH ATTACHED BASE STANDARD FEATURES

- Flush End Panel
- Adjustable Glides
- Use with Double or Single Sided Wall Units with Desk Height Overlay
- Top - Short Grain Runs from Side to Side
Base - Grain Runs Horizontal
- Ships Fully Assembled



model	w	d	h	wt	cu ft	list
CMA-5472ETTS3	53.5	72	29.25	223	75	\$ 4,069
CMA-5484ETTS3	53.5	84	29.25	252	88	\$ 4,574
CMA-5496ETTS3	53.5	96	29.25	281	100	\$ 5,081

- 36"W on Narrow Edge
- Use with Double or Single Sided Wall Units with Desk Height Overlay



model	w	d	h	wt	cu ft	list
CMA-6072ETTS3	59.5	72	29.25	251	83	\$ 4,427
CMA-6084ETTS3	59.5	84	29.25	284	97	\$ 4,930
CMA-6096ETTS3	59.5	96	29.25	316	110	\$ 5,438

- 42"W on Narrow Edge
- Use with Double or Single Sided Wall Units with Desk Height Overlay

OPTIONS

Finish	Power Cutout
Veneer <i>Quartered</i> OSL MHM MNW MMC EBY MRO DST MLC MGO MBM PCO MGW BUW Paint WHT	X9 No Cutout - Standard G1L Power Cutout Centered on Connecting End NOTE: Power supplies must be ordered separately. Use PS-79B , PS-79S , PS-80B or PS-80S only on page 712.

HOW TO ORDER

SPECIFY: Finish | power cutout. See page 688 for the designator finish name.

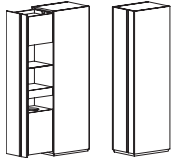
MODEL NUMBER

CMA-5472ETTS3

Finish	Power Cutout
OSL	X9

SLIDE OUT BUFFET SERVER (END UNIT) STANDARD FEATURES

- Top Hinged Door with Stationary Shelf
- One Adjustable Glass Shelf
- One Stationary Shelf
- One Pull Out Shelf with Storage Tray
- Pull Out Waste Receptacle (Weight Restriction 40 lbs.)
- Silver Recessed Pull, Height of Door
- Use with Double or Single Sided Wall Units on pages 693-702 with or without Markerboard option
- Cannot be used as a Freestanding Unit
- Horizontal Grain Direction (Quartered)
- Optional Duplex Outlet



model		w	d	h	wt	cu ft	list
CMA-7724SBL	LEFT HINGED	24	18	77	275	24	\$ 9,202
CMA-7730SBL	LEFT HINGED	30	18	77	319	30	\$ 9,701
CMA-7724SBR	RIGHT HINGED	24	18	77	275	24	\$ 9,202
CMA-7730SBR	RIGHT HINGED	30	18	77	319	30	\$ 9,701

OPTIONS

Finish	Power Supply
Veneer <i>Quartered</i> OSL MHM MNW MMC EBY MRO DST MLC MGO MBM PCO MGW BUW	X9 No Power Supply - Standard PS-67B Black \$229 PS-67S Silver \$229
Paint WHT	

HOW TO ORDER

SPECIFY: Finish | power supply. See page 688 for the designator finish name.

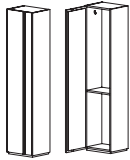
MODEL NUMBER

CMA-7724SBL

Finish	Power Supply
OSL	X9


STORAGE CABINET/WARDROBE (END UNIT) STANDARD FEATURES

- Two Stationary Shelves
- Two Coat Hooks
- Silver Recessed Pull, Height of Door
- Use with Double or Single Sided Wall Units on pages 693-702 with NO Markerboard option
- Cannot be used as a Freestanding Unit
- Unfinished Back
- Horizontal Grain Direction (Quartered)



model		w	d	h	wt	cu ft	list
CMA-7714SL	LEFT HINGED	14	18	77	106	15	\$ 4,278
CMA-7714SR	RIGHT HINGED	14	18	77	106	15	\$ 4,278

OPTIONS

Finish	Interior
Veneer Quartered OSL MHM MNW MMC EBY MRO DST MLC MGO MBM PCO MGW BUW Paint WHT	A4S Wardrobe with Coat Hooks - Standard  R8 Three Adjustable Shelves \$355

HOW TO ORDER

SPECIFY: Finish | interior. See page 688 for the designator finish name.

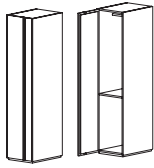
MODEL NUMBER

CMA-7714SL

Finish	Interior
OSL	A4S


STORAGE CABINET/WARDROBE (END UNIT) STANDARD FEATURES

- Two Stationary Shelves
- Hanging Bar
- Silver Recessed Pull, Height of Door
- Use with Double or Single Sided Wall Units on pages 693-702 with or without Markerboard option
- Unfinished Back
- Horizontal Grain Direction (Quartered)



model		w	d	h	wt	cu ft	list
CMA-7724SL	LEFT HINGED	24	18	77	145	24	\$ 4,773
CMA-7730SL	LEFT HINGED	30	18	77	162	30	\$ 5,205
CMA-7724SR	RIGHT HINGED	24	18	77	145	24	\$ 4,773
CMA-7730SR	RIGHT HINGED	30	18	77	162	30	\$ 5,205

OPTIONS

Finish	Interior
Veneer Quartered OSL MHM MNW MMC EBY MRO DST MLC MGO MBM PCO MGW BUW Paint WHT	R7 Wardrobe with Hanging Bar - Standard  R8 Three Adjustable Shelves \$355

HOW TO ORDER

SPECIFY: Finish | interior. See page 688 for the designator finish name.

MODEL NUMBER

CMA-7724SL

Finish	Interior
OSL	R7

BOOKCASE (END UNIT) STANDARD FEATURES

- Three Adjustable Shelves
- Two Stationary Shelves
- Use with Double or Single Sided Wall Units on pages 693-702 with NO Markerboard option
- Unfinished Back
- Horizontal Grain Direction (Quartered)



model	w	d	h	wt	cu ft	list
CMA-7714BC	14	18	77	92	15	\$ 4,242

END PANEL STANDARD FEATURES

- Use with Double or Single Sided Wall Units on pages 693-702 with NO Markerboard option and when End Cabinets are not Present



model	w	d	h	wt	cu ft	list
CMA-7703MEP	3	18	77	64	5	\$ 1,559

OPTIONS

Finish

Veneer

Quartered

OSL MHM MNW MMC EBY

MRO DST MLC MGO

MBM PCO MGW BUW

Paint

WHT

HOW TO ORDER

SPECIFY: Finish. See page 688 for the designator finish name.

MODEL NUMBER

CMA-7714BC

Finish

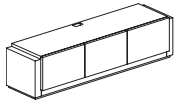
OSL

MEDIA CONSOLE CENTER UNIT CREDENZA STANDARD FEATURES

• Grommet in Top

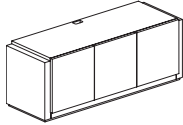
• Unfinished Back

• Horizontal Grain Direction (Quartered)



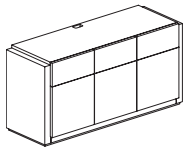
model	w	d	h	wt	cu ft	list
CMA-6619MCC	66	19.25	19	102	18	\$ 6,212
CMA-7219MCC	72	19.25	19	116	20	\$ 6,322

- Two Touch Release End Drawers
- Letter or Legal Filing
- One Hinged Door



model	w	d	h	wt	cu ft	list
CMA-7225DC	72	25.5	26.38	276	34	\$ 6,949

- Three Hinged Doors
- Adjustable Shelf behind Doors



model	w	d	h	wt	cu ft	list
CMA-7225BCC	72	25.5	36.56	310	46	\$ 7,484

- Three Touch Release Drawers
- Three Hinged Doors

OPTIONS

Overlay Finish	Chassis Finish
Veneer Quartered OSL MHM MNW MMC EBY MRO DST MLC MGO MBM PCO MGW BUW	Veneer Quartered OSL MHM MNW MMC EBY MRO DST MLC MGO MBM PCO MGW BUW
Paint WHT	

HOW TO ORDER

SPECIFY: Overlay finish | chassis finish. See page 688 for the designator finish name.

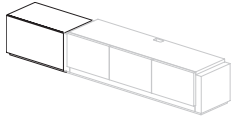
MODEL NUMBER

CMA-6619MCC

Overlay Finish	Chassis Finish
OSL	OSL

MEDIA CONSOLE END UNIT STANDARD FEATURES

- One Touch Release Drawer
- Letter or Legal Filing
- Cannot be used as a Freestanding Unit
- Unfinished Back
- Horizontal Grain Direction (Quartered)



model		w	d	h	wt	cu ft	list
CMA-3018MCL	LEFT	30	18	17.5	66	8	\$ 2,094
• Use with CMA-6619MCC and CMA-7219MCC as an Add on Drawer Unit on Left							
CMA-3018MCR	RIGHT	30	18	17.5	66	8	\$ 2,094
• Use with CMA-6619MCC and CMA-7219MCC as an Add on Drawer Unit on Right							

OPTIONS

Finish

Veneer

Quartered

OSL MHM MNW MMC EBY
MRO DST MLC MGO
MBM PCO MGW BUW

Paint

WHT

HOW TO ORDER

SPECIFY: Finish. See page 688 for the designator finish name.

MODEL NUMBER

CMA-3018MCL

Finish

OSL

TOP STANDARD FEATURES

• NOTE: Order base separately (see page 711)

RECTANGULAR



model	w	d	h	wt	cu ft	list
CMA-9642RT	96	42	1.5	203	13	\$ 4,641
• Two Bases Required, Seats Eight						
CMA-12048RT	120	48	1.5	251	18	\$ 7,422
• Three Bases Required, Seats 10						
CMA-14448RT	144	48	1.5	299	22	\$ 8,830
• Three Bases Required, Seats 12						
CMA-16848RT	168	48	1.5	347	25	\$ 10,552
• Three Bases Required, Seats 14						
CMA-19248RT	192	48	1.5	395	28	\$ 12,019
• Four Bases Required, Seats 16						

BOAT-SHAPED



model	w	d	h	wt	cu ft	list
CMA-9642BT	96	42	1.5	193	13	\$ 5,194
• Two Bases Required, Seats Eight						
CMA-12048BT	120	48	1.5	241	18	\$ 8,239
• Three Bases Required, Seats 10						
CMA-14448BT	144	48	1.5	289	22	\$ 9,713
• Three Bases Required, Seats 12						
CMA-16848BT	168	48	1.5	337	25	\$ 11,503
• Three Bases Required, Seats 14						
CMA-19248BT	192	48	1.5	385	28	\$ 12,981
• Four Bases Required, Seats 16						

OPTIONS

Finish	Power Cutout
Veneer <i>Quartered</i> OSL MHM MNW MMC EBY MRO DST MLC MGO MBM PCO MGW BUW	QR No Cutout - Standard NOTE: Power supplies must be ordered separately (see pages 708-716. To order Power Cutout, select location (see page 717).
Paint WHT	

HOW TO ORDER

SPECIFY: Finish | power cutout. See page 688 for the designator finish name.

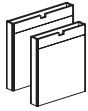
MODEL NUMBER

CMA-9642RT

Finish	Power Cutout
OSL	QR

RECTANGULAR AND BOAT-SHAPED PANEL BASES STANDARD FEATURES

- Desk Height Panel Base
- Aluminum Accent Corner Trim
- Horizontal Grain Direction (Quartered)
- Top to Bottom Pass-Thru Wire Management
- Removable Panel for Easy Wire Access



model	w	d	h	wt	cu ft	list
CMA-24SPB	24	4	27.75	62	5	\$ 1,591
CMA-30SPB	30	4	27.75	79	7	\$ 1,734

OPTIONS

Finish

Veneer

Quartered

OSL MHM MNW MMC EBY
MRO DST MLC MGO
MBM PCO MGW BUW

Paint

WHT

HOW TO ORDER

SPECIFY: Finish. See page 688 for the designator finish name.

MODEL NUMBER

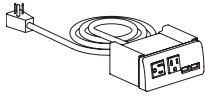
CMA-24SPBL

Finish

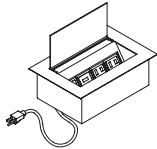
OSL

POWER AND DATA STANDARD FEATURES

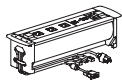
- UL Listed



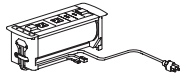
model		w	d	h	wt	cu ft	list
PS-55	BLACK	5.44	3.38	2.13	1	1	\$ 216
PS-55W	WHITE	5.44	3.38	2.13	1	1	\$ 216
<ul style="list-style-type: none">• Mounts below Worksurface• Mounting Bracket included• Two 12 Amp Power Outlets (Front)				<ul style="list-style-type: none">• One Power Outlet (Back)• Two 2.1 Amp USB Charging Ports• 10' Power Cord			



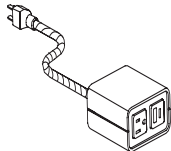
model	w	d	h	wt	cu ft	list
PS-78	8.25	5.25	3.75	5	0.4	\$ 620
<ul style="list-style-type: none">• Requires Cutout to be Machined at a Factory - Contact Your Customer Service Representative for Ordering Information• Hinged Lid with Cord Management when Closed• Anodized Aluminum Finish• Pass Thru Wire Management Area			<ul style="list-style-type: none">• Two 15 Amp Outlets• Two 2.1 Amp USB Charging Ports• One Open Data Port• 6' Power Cord			



model		w	d	h	wt	cu ft	list
PS-79B	BLACK	15.88	4.38	4.38	8	0.6	\$ 1,549
PS-79S	SILVER	15.88	4.38	4.38	8	0.6	\$ 1,549
<ul style="list-style-type: none">• Requires Cutout to be Machined at a Factory - Contact Your Customer Service Representative for Ordering Information• One Touch Open and Close• Safety Photo Electronic Eye Prevents Rotation when Unit is being Used• Anodized Aluminum Finish• Three 15 Amp Outlets				<ul style="list-style-type: none">• One CAT6 Data Module• One HDMI Port• One 3.5mm Audio Module• One Two Port USB Charging Port• One VGA Port• 12' Power Cord			



model		w	d	h	wt	cu ft	list
PS-80B	BLACK	11.75	4.38	4.38	6	0.4	\$ 1,379
PS-80S	SILVER	11.75	4.38	4.38	6	0.4	\$ 1,379
<ul style="list-style-type: none">• Requires Cutout to be Machined at a Factory - Contact Your Customer Service Representative for Ordering Information• One Touch Open and Close• Safety Photo Electronic Eye Prevents Rotation when Unit is being Used• Anodized Aluminum Finish				<ul style="list-style-type: none">• Two 15 Amp Outlets• One HDMI Port• One 2.1 Amp Port USB Charging Port• 12' Power Cord			



model	w	d	h	wt	cu ft	list
PS-100BE	3.6	3.9	2.1	2	0.25	\$ 382
• Beech Shell with Clear Finish		• Dusk Braided Cord				
PS-100BK	3.6	3.9	2.1	2	0.25	\$ 382
• Beech Shell with Black Finish		• Black with White Pinstripe Braided Cord				
PS-100WL	3.6	3.9	2.1	2	0.25	\$ 382
• Walnut Shell with Clear Finish		• Black with White Pinstripe Braided Cord				
• One Power Outlet			• One USB-C Charging Port			
• One USB-A Charging Port			• 9' Braided Power Cord			



model	h	wt	cu ft	list
WM-HA6	48	1	0.1	\$ 102
<ul style="list-style-type: none">• Fabric Wire Manager Closed by Velcro• Easily Cut to Different Lengths if Needed		<ul style="list-style-type: none">• Can Access Wires Anywhere in the Length• Use when Power Infeed is Routed Outside of Legs		

OPTIONS

Finish (WM-HA6 Only)

- BLK8 Black
- GRY8 Grey
- WHT8 White

HOW TO ORDER
SPECIFY: Finish.

MODEL NUMBER

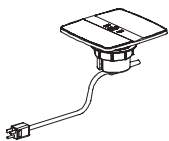
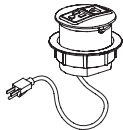
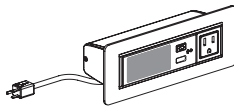
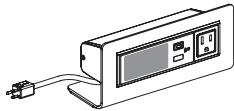
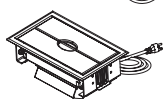
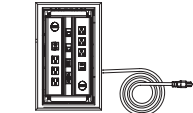
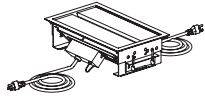
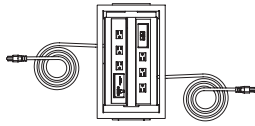
WM-HA6

Finish (WM-HA6 Only)

BLK8

POWER AND DATA STANDARD FEATURES

- UL Listed



model		w	d	h	wt	cu ft	list
PS-37	BLACK	15	9	4.75	12	2	\$ 2,651
PS-38	SILVER	15	9	4.75	12	2	\$ 2,668

- Requires Cutout to be Machined at a Factory - Contact your Customer Service Representative for Ordering Information
- Six 12 Amp Power Outlets
- Two RJ-45 Cat6 Data Jacks
- One HDMI Port
- One VGA Port
- One Mini Stereo
- 10' Power Cord

model		w	d	h	wt	cu ft	list
PS-81B	BLACK	15.5	9.5	6.75	8	1	\$ 1,971
PS-81S	SILVER	15.5	9.5	6.75	8	1	\$ 1,971

- Requires Cutout to be Machined at a Factory - Contact your Customer Service Representative for Ordering Information
- Six 12 Amp Power Outlets
- Two 2 Port 4.2 Amp USB Charging Ports
- One HDMI Port
- One VGA Port
- RJ-11 Voice Jack
- RJ-45 Cat6 Data Jack
- Two Grommet Openings for Wire Pass-Thru
- 10' Power Cord

model		w	d	h	wt	cu ft	list
PS-87W	WHITE	8	3.25	3.75	4	0.5	\$ 827
PS-87B	BLACK	8	3.25	3.75	4	0.5	\$ 827

- Mobile Table Top Unit
- One Power Outlet
- One USB Charging Port
- Bluetooth Speaker
- 10' Power Cord

model		w	d	h	wt	cu ft	list
PS-88W	WHITE	8	3	2.5	3	0.5	\$ 827
PS-88B	BLACK	8	3	2.5	3	0.5	\$ 827

- Requires Cutout to be Machined at a Factory - Contact Your Customer Service Representative for Ordering Information
- One Power Outlet
- One USB Charging Port
- Bluetooth Speaker
- 10' Power Cord

model		w	d	h	wt	cu ft	list
PS-92W	WHITE	4	4	3.25	3	0.5	\$ 289
PS-92B	BLACK	4	4	3.25	3	0.5	\$ 289

- Requires Cutout to be Machined at a Factory - Contact Your Customer Service Representative for Ordering Information
- One Power Outlet
- One USB-A Charging Port
- One USB-C Charging Port
- 10' Power Cord

model		w	d	h	wt	cu ft	list
PS-93W	WHITE	7.38	7	4.38	3	0.5	\$ 579
PS-93B	BLACK	7.38	7	4.38	3	0.5	\$ 579

- Requires Cutout to be Machined at a Factory - Contact Your Customer Service Representative for Ordering Information
- One Power Outlet
- Two USB-A Charging Ports
- Two Wireless Charging Mats
- 10' Power Cord

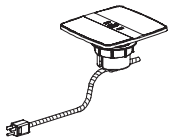
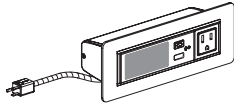
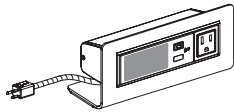
model		w	d	h	wt	cu ft	list
RJ-11	Black Voice Hard Wire Jack	n/a	n/a	n/a	n/a	0.1	\$ 46
RJ-45	Black Voice and Data Hard Wire Jack	n/a	n/a	n/a	n/a	0.1	\$ 42

HOW TO ORDER

MODEL NUMBER

PS-37

POWER SUPPLY STANDARD FEATURES



model		w	d	h	wt	cu ft	list
PS-87W-BC	WHITE	8	3.25	3.75	4	0.5	\$ 1,088
PS-87B-BC	BLACK	8	3.25	3.75	4	0.5	\$ 1,088

- Mobile Table Top Unit
- One Power Outlet
- One USB Charging Port
- Bluetooth Speaker
- 10' Braided Power Cord
- UL Listed

model		w	d	h	wt	cu ft	list
PS-88W-BC	WHITE	8	3	2.5	3	0.5	\$ 1,088
PS-88B-BC	BLACK	8	3	2.5	3	0.5	\$ 1,088

- Requires Cutout to be Machined at a Factory - Contact Your Customer Service Representative for Ordering Information
- One Power Outlet
- One USB Charging Port
- Bluetooth Speaker
- 10' Braided Power Cord
- UL Listed

model		w	d	h	wt	cu ft	list
PS-92W-BC	WHITE	4	4	3.25	3	0.5	\$ 374
PS-92B-BC	BLACK	4	4	3.25	3	0.5	\$ 374

- Requires Cutout to be Machined at a Factory - Contact Your Customer Service Representative for Ordering Information
- One Power Outlet
- One USB-A Charging Port
- One USB-C Charging Port
- 10' Braided Power Cord
- UL Listed

model		w	d	h	wt	cu ft	list
PS-93W-BC	WHITE	7.38	7	4.38	3	0.5	\$ 731
PS-93B-BC	BLACK	7.38	7	4.38	3	0.5	\$ 731

- Requires Cutout to be Machined at a Factory - Contact Your Customer Service Representative for Ordering Information
- One Power Outlet
- Two USB-A Charging Ports
- Two Wireless Charging Mats
- 10' Braided Power Cord
- UL Listed

OPTIONS

Cord

- BC1 Dusk
- BC4 Brass
- BC15 Zig Zag Fog/Storm
- BC17 Zig Zag Berry/Poppy

HOW TO ORDER

SPECIFY: Cord

MODEL NUMBER

PS-87W-BC

Cord

BC1

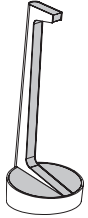
POWER SUPPLY (VESTA) STANDARD FEATURES



Body Finish Shown in Shaded Area

model	body finish	w	d	h	wt	cu ft	list
PS-90B	BLACK	12	12	28.25	14	4	\$ 1,476
PS-90F	FOG	12	12	28.25	14	4	\$ 1,476
PS-90S	STORM	12	12	28.25	14	4	\$ 1,476
PS-90W	WHITE	12	12	28.25	14	4	\$ 1,476

- UL Listed



Accent Finish Shown in Shaded Area

OPTIONS

Power	Accent Finish	Cord
<p>X9 No Lower Power Outlet - Standard 10' Cord Top: One 15 Amp Outlet Two 2.1 Amp USB Charging Ports One 18 WATT USB-C Charging Port</p>	When PS-90B is specified:	
	H8P Black	X9 No Cord (H7S only) H7U Standard Black Cord No Braid BC8 Black Braid \$68 BC14 Pinstripe Black-White Braid \$68
	H8N Fog	X9 No Cord (H7S only) H7U Standard Black Cord No Braid BC8 Black Braid \$68 BC6 Fog Braid \$68
	H8Q Storm	X9 No Cord (H7S only) H7U Standard Black Cord No Braid BC8 Black Braid \$68 BC4 Brass Braid \$68
<p>H7Q Two Lower Power Outlets \$18 10' Cord Top: One 15 Amp Outlet Two 2.1 Amp USB Charging Ports One 18 WATT USB-C Charging Port</p>	When PS-90F is specified:	
	H8R Berry	X9 No Cord (H7S only) H7T Standard White Cord No Braid BC4 Brass Braid \$68 BC6 Fog Braid \$68 BC7 Berry Braid \$68
	H8P Black	X9 No Cord (H7S only) H7T Standard White Cord No Braid BC6 Fog Braid \$68 BC14 Pinstripe Black-White Braid \$68 BC15 Zig Zag Fog-Storm Braid \$68
	H8X Honey	X9 No Cord (H7S only) H7T Standard White Cord No Braid BC4 Brass Braid \$68 BC6 Fog Braid \$68 BC2 Poppy Braid \$68
<p>H7R Three Lower Power Outlets \$48 10' Cord Top: One 15 Amp Outlet Two 2.1 Amp USB Charging Ports One 18 WATT USB-C Charging Port</p>	H8W Peacock	X9 No Cord (H7S only) H7T Standard White Cord No Braid BC6 Fog Braid \$68
	H8U Poppy	X9 No Cord (H7S only) H7T Standard White Cord No Braid BC6 Fog Braid \$68 BC10 Storm Braid \$68 BC19 Chevron Poppy-Fog Braid \$68
	H8Q Storm	X9 No Cord (H7S only) H7T Standard White Cord No Braid BC1 Dusk Braid \$68 BC10 Storm Braid \$68 BC15 Zig Zag Fog-Storm Braid \$68
	H8V White	X9 No Cord (H7S only) H7T Standard White Cord No Braid BC14 Pinstripe Black-White Braid \$68 BC19 Chevron Poppy-Fog Braid \$68
<p>H7S Battery Operated \$1,256 Removable Charging Cord Top: Three 2.1 Amp USB Charging Ports One 18 WATT USB-C Charging Port</p>	When PS-90S is specified:	
	H8P Black	X9 No Cord (H7S only) H7T Standard White Cord No Braid BC8 Black Braid \$68 BC10 Storm Braid \$68
	H8N Fog	X9 No Cord (H7S only) H7T Standard White Cord No Braid BC6 Fog Braid \$68 BC10 Storm Braid \$68 BC15 Zig Zag Fog-Storm Braid \$68
	When PS-90W is specified:	
	H8R Berry	X9 No Cord (H7S only) H7T Standard White Cord No Braid BC7 Berry Braid \$68 BC4 Brass Braid \$68 BC2 Poppy Braid \$68
	H8S Dusk	X9 No Cord (H7S only) H7T Standard White Cord No Braid BC4 Brass Braid \$68 BC1 Dusk Braid \$68 BC10 Storm Braid \$68
	H8N Fog	X9 No Cord (H7S only) H7T Standard White Cord No Braid BC7 Berry Braid \$68 BC6 Fog Braid \$68 BC15 Zig Zag Fog-Storm Braid \$68
	H8T Navy	X9 No Cord (H7S only) BC4 Brass Braid \$68 BC2 Poppy Braid \$68
	H8Q Storm	X9 No Cord (H7S only) H7T Standard White Cord No Braid BC1 Dusk Braid \$68 BC10 Storm Braid \$68

HOW TO ORDER

SPECIFY: Power | accent finish | cord.

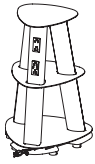
MODEL NUMBER

PS-90B

Power	Accent Finish	Cord
X9	H8P	H7U

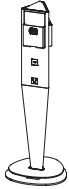
POWER SUPPLY STANDARD FEATURES

ISLE POWER STATION

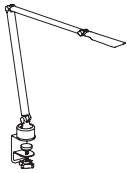


model		w	d	h	wt	cu ft	list
PS-96S	SILVER	18	18	25.5	25	8	\$ 2,388
		<ul style="list-style-type: none"> • Twelve Power Outlets • Three USB Charging Ports • Three USB-C Charging Ports • 9' Power Cord • UL Listed 					

SCEPTER POWER STATION

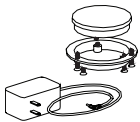


model		w	d	h	wt	cu ft	list
PS-98B	BLACK	11.28	11.28	31.18	15	4	\$ 2,401
PS-98W	WHITE	11.28	11.28	31.18	15	4	\$ 2,401
		<ul style="list-style-type: none"> • Three Wireless Charging Sleeves (One Each Side) • Three Power Outlets (One Each Side) • One Duplex USB-A Charging Port (Two Sides) • One USB-C 60 Watt Charging Port (One Side) • 10' Power Cord • UL Listed 					



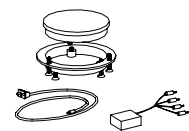
model	w	d	h	wt	cu ft	list
TL-20	7.7	6	15	2	1	\$ 679
<ul style="list-style-type: none"> • Energy Efficient LED 3500K Bulbs • Silver Frame • 6' Power Cord • On/Off Touch Switch with Continuous Dimming • Clamps to Rim of Worksurface - cannot be used on Units with Back Panel 						

WIRELESS CHARGING UNIT



model		w	d	h	wt	cu ft	list
WC-2	BLACK	4.5	4.5	1.375	0.1	0.5	\$ 427
		<ul style="list-style-type: none"> • Field Installed Wireless Charging Unit • Must be Routed in from Bottom Side of Top 1/4" from Face • 15 WATT Charging Speed • Cover Cap is Exposed 5/8" Below Surface • Location Decal Provided for Face of Top • 5' Cord 					

WIRELESS CHARGING MULTI UNIT



model		w	d	h	wt	cu ft	list
WC-MU	BLACK	4.5	4.5	1.375	2	0.25	\$ 589
		<ul style="list-style-type: none"> • Field Installed Wireless Charging Multi Unit • Must be Routed in from Bottom Side of Top 1/4" from Face • 15 WATT Charging Speed • UL Listed • Cover Cap is Exposed 5/8" Below Surface • Location Decal Provided for Face of Top • 15' Multi Unit Cord (can use up to 4 Pucks) • 4' From Hub to Plug, 11' From Hub to Each Puck 					

OPTIONS

Number of Pucks (WC-MU only)

One	Standard
Two	\$350
Three	\$700
Four	\$1,050

HOW TO ORDER

SPECIFY: Number of Pucks

MODEL NUMBER

WC-MU

Number of Pucks (WC-MU only)

One



POWER CUTOUT LOCATIONS

To order, add location code(s) to model number.

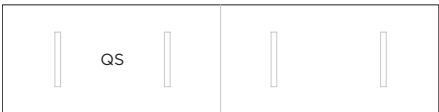
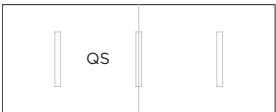
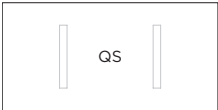
Example: CMA-9642RT | QS
Model Number Power Cutout

NO CUTOUT

QR No cutout

POWER CUTOUTS BETWEEN BASES

QS Between 1st Base and 2nd Base



QT Between 2nd Base and 3rd Base



QU Between 3rd Base and 4th Base

