

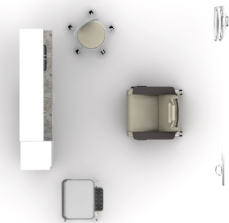


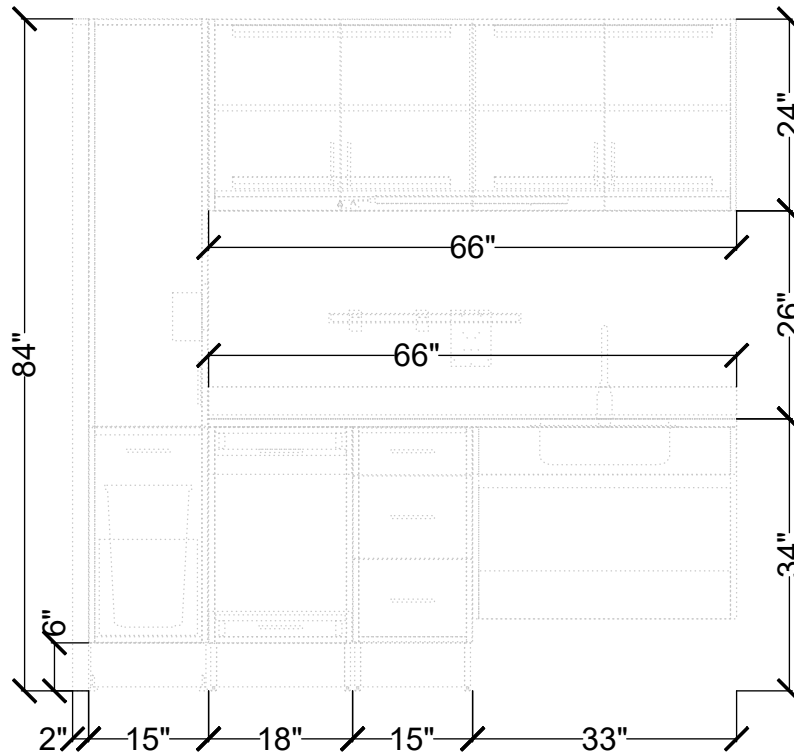
S300075

Footprint 10' x 11'



**carolina**  
an OFS company





S300075

Footprint 10' x 11'



**carolina**  
an OFS company



#	Qty	Company	Part Number	Description
1	1	Carolina	2200-BR	In The Fold, Plastic Wall Mount Bracket Holds 2 Chairs
2	2	Carolina	2200-PL-1	In The Fold, 21x22x34, Folding Chair, Plastic Seat/Back (1 Pack) Tallow (White)
3	1	Carolina	2500-B	Stray Lab Physician's Stool with Back, 26x26x25.5-30.75 Chalk Foot Ring Chalk Nylon Base Black Soft Wheel Casters OFS Vela - Grade 4 Tostado No Selection of Option
4	1	Carolina	2700-L	Stray Caregiver Support Station, 24.375x19.75x39.125, HPL Top Grey - (Solid Color) Stone Handle and Storage Bin Left Side Facing
5	1	Carolina	9400-R	Lasata 32.75x34.5x49.75 Patient Recliner, w/ Pivoting Arm Frost perimeter base trim with Shadow left side facing handle No Selection No Selection of Option Head Pillow OFS Vela - Grade 4 Tostado No Selection of Option OFS Vela - Grade 4 Tostado OFS Vela - Grade 4 Tostado No Selection of Option
6	2	Carolina	ER	24-60"W x 1"D x 1"H, "Equipment Rail 24" Wide
7	1	Carolina	ERPT	Mile Marker, Equipment Rail Universal Paper Towel Mount
8	1	Carolina	ERSC	Mile Marker, Equipment Rail Universal Sharps Container Mount
9	1	Carolina	ERSD	Mile Marker, Equipment Rail Universal Soap/Foam Dispenser Mount
10	1	Carolina	ERUB	Mile Marker, Equipment Rail U-Shaped Wire Basket
11	1	Carolina	MM2-14UCD4	Mile Marker G2, 60-72"W x 14"D x 24-30"H, upper cabinets w/four full doors 66" Wide 24" High Pure White - (Solid Color) Pure White - (Solid Color) Fixed Shelves Notched Shelves No lock No Selection Myle Stone
12	1	Carolina	MM2-18ADA	Mile Marker G2, 30-36"W x 18.25"D x 24"H, ADA Sink Cabinet - (Drop In Sink not available on ADA Base) 33" Wide Pure White - (Solid Color) Pure White - (Solid Color)
13	1	Carolina	MM2-18BC3-6	Mile Marker G2, 12-36"W x 18.25"D x 33-36"H, Base Cabinet w/3 Drawers , 6" Toe Kick 15" Wide

#	Qty	Company	Part Number	Description
				33" High Pure White - (Solid Color) Pure White - (Solid Color) No lock No Selection Myle Stone Top Drawer Liner
14	1	Carolina	MM2-18BCP-6	Mile Marker G2, 18-24"W x 18.25"D x 33-36"H, Base Cabinet w/Pullout Shelf , 6" Toe Kick 18" Wide 33" High Pure White - (Solid Color) Pure White - (Solid Color) Lower And Upper Pullut Shelf No Selection Myle Stone
15	1	Carolina	MM2-18SCDWPGB-6	Mile Marker G2, 15-24"w x 18.25"D x 60-84"H, Storage Cabinet w/Upper Door, Lower Waste Pullout Drawer Base & Glove Box, 6" Toe Kick 15" Wide 84" High Pure White - (Solid Color) Pure White - (Solid Color) Left Hinge No Selection Stone No lock No Selection Myle Stone
16	1	Carolina	MM2-18SF-6	Mile Marker G2, 6"W x 17.5"D x 60-84"H, Storage Filler, 6" Toe Kick - (field-cut to fit by the installer) 84" High Pure White - (Solid Color)
17	1	Carolina	MM2-18TWBS	Mile Marker G2, 12-96"W x 18.5"D x 5"H, Rectangular Worksurface Solid w/Backsplash Surface 18.5"D 66" Wide Tier 3 Livingstone Tier 3 Solid Surface Canyon Creek None Square Corner Undermount 5" Deep w/ overflow Sensor 5.25" Gooseneck Left Edge 49" from Left + 0.5" from Left None None None None
18	1	Carolina	MM2-TL-14	Task light, 24"W