



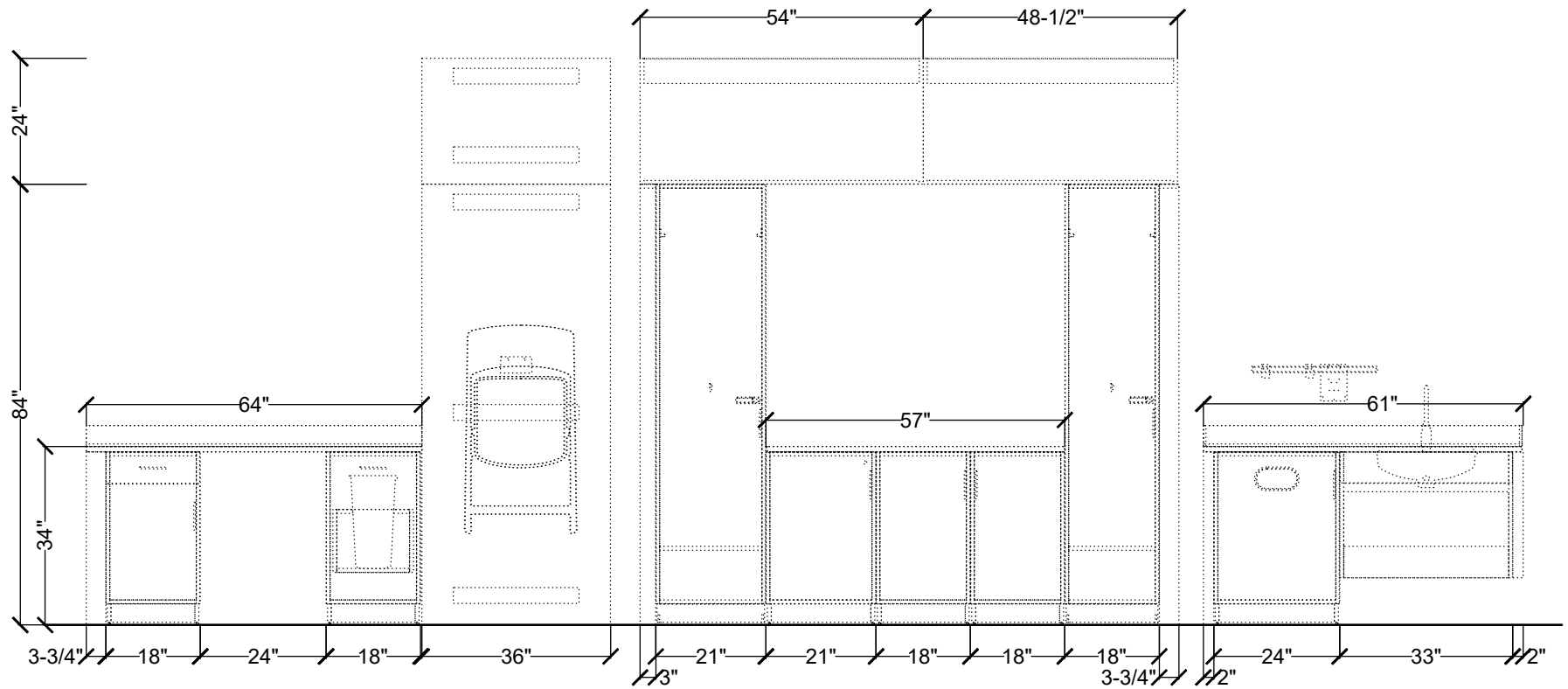
S300197

Footprint 23' x 14'



carolina
an OFS company





S300197

Footprint 23' x 14'



carolina
an OFS company



#	Qty	Company	Part Number	Description
-				
1	1	Carolina	1200-UR	Reservoir, 44x19.75x29, HPL Overbed Table, Right Handed, U Base Grey - (Solid Color) No Selection of Option No Selection of Option Vanity Drawer No Selection of Option
2	1	Carolina	2200-BR	In The Fold, Plastic Wall Mount Bracket Holds 2 Chairs
3	2	Carolina	2200-UP-1	In The Fold, 21x22x34, Folding Chair, Upholstered Seat / Plastic Back (1 Pack) Grounded (Warm Terracotta) Ultrafabrics Ultraleather - Grade 7 Curry No Selection of Option
4	1	Carolina	6101-HR	Bokeh High Back Lounge - metal rocker base Chalk Folkstone Grey CF Stinson Cassidy 2.0 - Grade 5 CAS211 Penny Loafer None
5	1	Carolina	CL-76CA	Offshore Sleepover Sofa, 92.25x32.5x32, Left Facing Cubby/Right Facing Arm Powder Coat Chalk Grey Caster Rear legs Solid Surface Modern White Solid Surface Full Cubby with Coat Rack Chalk Solid Surface Modern White Solid Surface Solid Surface Modern White Solid Surface Spill Groove (Top Panel Only) Chalk Left Facing Deep Space Maharam Apt - Grade 8 Crepe No Selection of Option
6	1	Carolina	CL-TBL	Offshore, 12x18x27.54, Pull Up Table Stone Solid Surface Modern White Solid Surface
7	2	Carolina	ER	24-60"W x 1"D x 1"H, "Equipment Rail 24" Wide
8	1	Carolina	ERPT	Mile Marker, Equipment Rail Universal Paper Towel Mount
9	1	Carolina	ERSC	Mile Marker, Equipment Rail Universal Sharps Container Mount
10	1	Carolina	ERSD	Mile Marker, Equipment Rail Universal Soap/Foam Dispenser Mount
11	1	Carolina	ERUB	Mile Marker, Equipment Rail U-Shaped Wire Basket
12	1	Carolina	MM2-18ADA	Mile Marker G2, 30-36"W x 18.25"D x 24"H, ADA Sink Cabinet - (Drop In Sink not available on ADA Base) 33" Wide Timber - (Flat Grain) Timber - (Flat Grain)

#	Qty	Company	Part Number	Description
13	1	Carolina	MM2-18BCD1-4	Mile Marker G2, 15-24"W x 18.25"D x 33-36"H, Base Cabinet w/Door , 4" Toe Kick 18" Wide 33" High Timber - (Flat Grain) Timber - (Flat Grain) Left Hinge No Selection No Selection None No lock No Selection Aero Chalk
14	1	Carolina	MM2-18BCD1-4	Mile Marker G2, 15-24"W x 18.25"D x 33-36"H, Base Cabinet w/Door , 4" Toe Kick 18" Wide 33" High Timber - (Flat Grain) Timber - (Flat Grain) Right Hinge No Selection No Selection None No lock No Selection Aero Chalk
15	1	Carolina	MM2-18BCD1-4	Mile Marker G2, 15-24"W x 18.25"D x 33-36"H, Base Cabinet w/Door , 4" Toe Kick 21" Wide 33" High Timber - (Flat Grain) Timber - (Flat Grain) Left Hinge No Selection No Selection None Requires 1 lock core No Selection Aero Stone
16	1	Carolina	MM2-18BCD1-4	Mile Marker G2, 15-24"W x 18.25"D x 33-36"H, Base Cabinet w/Door , 4" Toe Kick 24" Wide 33" High Timber - (Flat Grain) Timber - (Flat Grain) Left Hinge Waste Ring Stone No Selection No lock No Selection Aero Stone
17	1	Carolina	MM2-18BCDD1-4	Mile Marker G2, 15-24"W x 18.25"D x 33-36"H, Base Cabinet w/Door And 1 Drawer , 4" Toe Kick 18" Wide 33" High Timber - (Flat Grain) Timber - (Flat Grain)

#	Qty	Company	Part Number	Description
				Left Hinge None No lock No Selection No lock No Selection Aero Chalk No Drawer Liner
18	1	Carolina	MM2-18BCWP-4	Mile Marker G2, 15-24"W x 18.25"D x 33-36"H, Base Cabinet w/Waste Pullout Drawer , 4" Toe Kick 18" Wide 33" High Timber - (Flat Grain) Timber - (Flat Grain) Aero Chalk
19	1	Carolina	MM2-18SCD1-4	Mile Marker G2, 15-24"W x 17.5"D x 60-84"H, Storage Cabinet w/1 Door 4" Toe Kick 18" Wide 84" High Timber - (Flat Grain) Timber - (Flat Grain) Left Hinge Coat Hooks Assigned user pearl keyless electrical Undecided Lock Finish Aero Stone None
20	1	Carolina	MM2-18SCD1-4	Mile Marker G2, 15-24"W x 17.5"D x 60-84"H, Storage Cabinet w/1 Door 4" Toe Kick 21" Wide 84" High Timber - (Flat Grain) Timber - (Flat Grain) Left Hinge Coat Hooks Assigned user pearl keyless electrical Undecided Lock Finish Aero Stone None
21	2	Carolina	MM2-18SF-4	Mile Marker G2, 6"W x 17.5"D x 60-84"H, Storage Filler, 4" Toe Kick - (field-cut to fit by the installer) 84" High Timber - (Flat Grain)
22	2	Carolina	MM2-18SP	Mile Marker G2, 18-54"W x 17.5-18.25"D x 12-24"H, Soffit Filler Closed Storage 18.25" Deep 54" Wide Align w/ door (18.25) 24" High Timber - (Flat Grain)
23	1	Carolina	MM2-18SSS	Mile Marker G2, 0.5"W x 17.825"D x 4"H, Side Splash 4" High Solid Surface For 18.5"D Worksurface Align with edge - (17.875) Tier 2 Corian Tier 2 Solid Surface Modern White Left Square Corner
24	1	Carolina	MM2-18SSS	Mile Marker G2, 0.5"W x 17.825"D x 4"H, Side Splash 4" High Solid Surface For 18.5"D Worksurface Align with edge - (17.875)



#	Qty	Company	Part Number	Description
30	1	Carolina	MM2-84WP	Mile Marker G2, 24-54"W x 0.75"D x 84"H, Wall Panel w/Flat Top Edge 36" Wide Timber - (Flat Grain)
31	1	Carolina	MM2-84WP	Mile Marker G2, 24-54"W x 0.75"D x 84"H, Wall Panel w/Flat Top Edge 54" Wide Pure White - (Solid Color)
32	1	Carolina	MM2-ADAF	Mile Marker G2, 6"W x 17.5-23.5"D x 24"H, ADA Base Filler - (field-cut to fit by the installer) 17.5" Deep Timber - (Flat Grain)
33	1	Carolina	MM2-BF-4	Mile Marker G2, 6"W x 2"D x 33-36"H, Base Filler, 4" Toe Kick 33" High Timber - (Flat Grain)
34	1	Carolina	MM2-BF-4	Mile Marker G2, 6"W x 2"D x 33-36"H, Base Filler, 4" Toe Kick 33" High Timber - (Flat Grain)
35	1	Carolina	MM2-RC2	Restrictor clip, set of 2
36	1	Carolina	TH-M1721BC1	Theatre 17x21.5x30 Bedside Cabinet, 3 Drawers TFL - Solid Color Grey (Solid Color) Flat 1" Solid Surface Square Solid Surface - Spill Groove Light Tone Solid Surface Modern White Era Nickel Exposed Casters Requires 1 Lock Core - Specific Key (Lock Sets Ordered Separately) Three Liners