

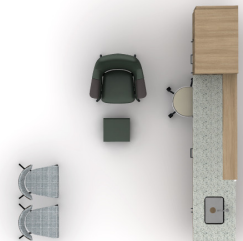


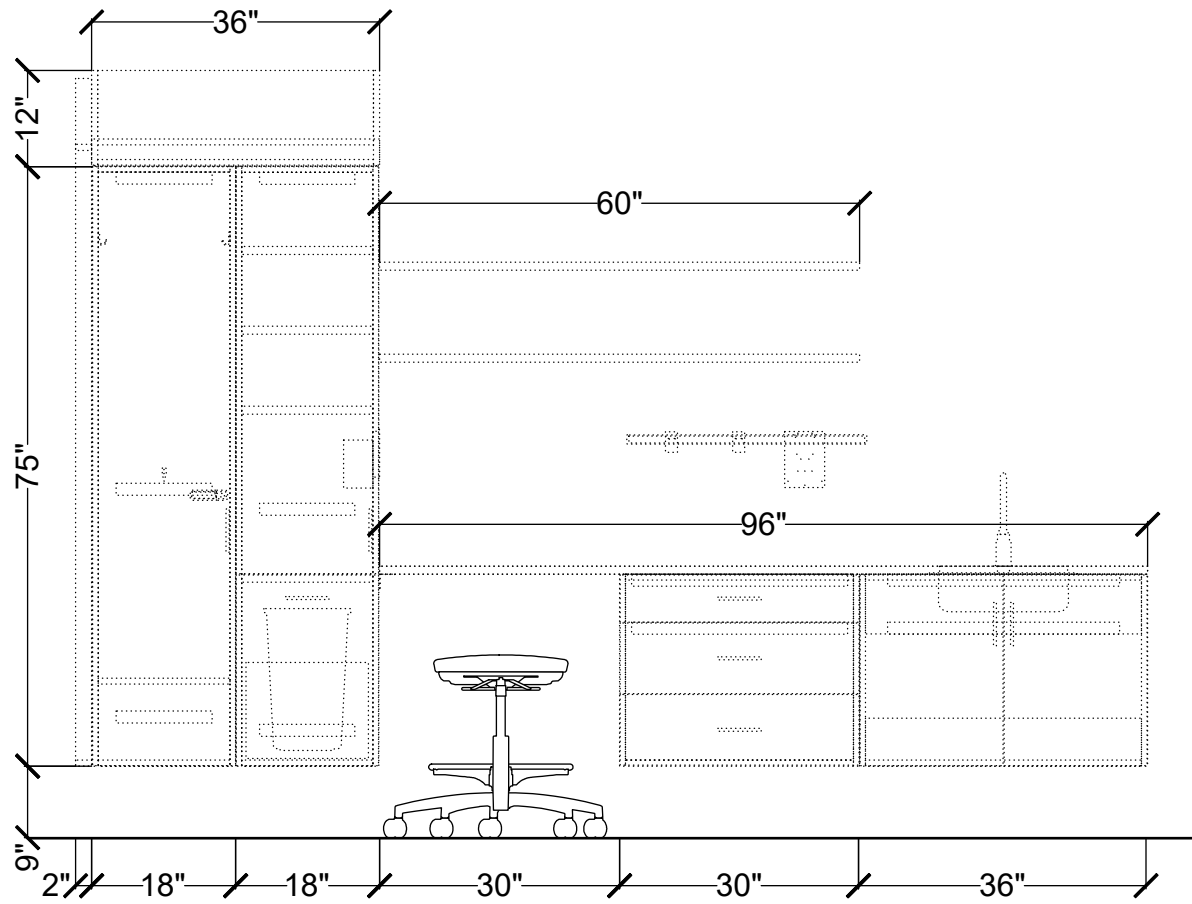
S300199

Footprint 11' x 10'



carolina
an OFS company





S300199

Footprint 11' x 10'



carolina
an OFS company



#	Qty	Company	Part Number	Description
1	1	Carolina	1481	Saven Ottoman, Upholstered Top 16x14x7 Ion OFS Vela - Grade 4 Bosque No Selection of Option
2	1	Carolina	2500	Stray Physician's Stool No Back, 26x26x15.5-20.75 Graphite Foot Ring Carbon Nylon Base Black Soft Wheel Casters OFS Vela - Grade 4 Tostado No Selection of Option
3	1	Carolina	6101-HL	Bokeh High Back Lounge - metal four leg base Ion - [Super Matte] Shadow OFS Vela - Grade 4 Bosque None
4	2	OFS	104138	Bistro 21x23x32.75 Side Chair - Single Textile Pecan - [Oak] Black Graded-in Fabric Graded-in - Grade 7
5	2	OFS	CC-M0860WS	3134767 - HBF Textiles Perrito Kerry Blue Intermix 60x8x1 Wall Shelf Chestnut - (Flat Grain)
6	1	Carolina	ER	24-60"W x 1"D x 1"H, "Equipment Rail 30" Wide
7	1	Carolina	ERPT	Mile Marker, Equipment Rail Universal Paper Towel Mount
8	1	Carolina	ERSD	Mile Marker, Equipment Rail Universal Soap/Foam Dispenser Mount
9	1	Carolina	MM2-24HBC3	Mile Marker G2, 12-36"W x 24.25"D x 24-29"H, Wall Hanging Base Cabinet W/Three Drawers 30" Wide 24" High Chestnut - (Flat Grain) Chestnut - (Flat Grain) No lock No Selection Myle Ion No Drawer Liner
10	1	Carolina	MM2-24HBSCFD2	Mile Marker G2, 30-36"W x 24.25"D x 24-29"H, Wall Hanging Sink Cabinet W/Two Full Doors 36" Wide 24" High Chestnut - (Flat Grain) Chestnut - (Flat Grain) No lock No Selection Myle Ion
11	1	Carolina	MM2-24HSCD1-24	Mile Marker G2, 15-24"W x 24.25"D x 60-84"H, Wall Hanging Storage Cabinet w/1 Door 18" Wide 75" High Chestnut - (Flat Grain)

#	Qty	Company	Part Number	Description
				Chestnut - (Flat Grain) Left Hinge Coat Hooks Shared user pearl keyless electrical Black Myle Ion
12	1	Carolina	MM2-24HSCDWPGGB-24	Mile Marker G2, 15-24"W x 24.25"D x 69-75"H, Wall Hanging Storage Cabinet w/Upper Door, Lower Waste Pullout Drawer Base & Glove Box 18" Wide 75" High Chestnut - (Flat Grain) Chestnut - (Flat Grain) Left Hinge Ion No lock No Selection Myle Ion
13	1	Carolina	MM2-24HSFS	Mile Marker G2, 6"W x 23.5"D x 80.678-91.678"H, Wall Hanging Storage Filler Sloped 85.9513" High
14	1	Carolina	MM2-24STP	Chestnut - (Flat Grain) Mile Marker G2, 12-54"W x 23.5-24.25"D x 12"H, Sloped Top Panel 36" Wide Align w/ door (24.25)
15	1	Carolina	MM2-24TS	Chestnut - (Flat Grain) Mile Marker G2, 12-96"W x 24.5"D x 1"H, Rectangular Worksurface Solid Surface 24.5"D 96" Wide Tier 3 Livingstone Tier 3 Solid Surface Rain Dance Right Square Corner Undermount 5" Deep w/ overflow Sensor 5.25" Gooseneck Left Edge 78" from Left + 0" from left None None None None
16	2	Carolina	MM2-RC2	Restrictor clip, set of 2
17	1	OFS	SCWBKT-1	16"L Worksurface Bracket