

Staks Crossover assembly instructions

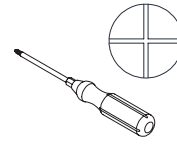


Installation Sequence

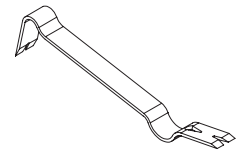
Tools Required

1. Wall Panels

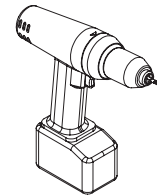
- a. Connector kit part identification 3
- b. T - 3 Panel Connection Preparation 4
- c. X Panel Connection Preparation 5
- d. T - 2 Panel Connection Preparation 6
- e. In-Line Panel To Panel Connection Preparation 7
- f. L Panel Connection Preparation 8
- g. T - 3 Panel Connection Preparation 9
- h. X Panel Connection Preparation 10
- i. High Point of Floor Intersection Preparation 11
- j. Assembly 12
- k. Starter Post Installation 13
- l. 120° Corner Unit Installation 14-15



Panel clip



Panel jack (pry bar)



Cordless drill



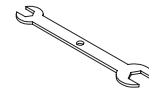
2 3/8" hole saw

2. Pedestal Preparation

- a. Drawer Removal 16
- b. Shelf Removal 17
- c. Riser Beam Installation 18
- d. Pedestal Bracket Installation 19



3/16" Allen wrench



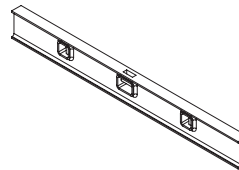
Leveler wrench

3. Pedestal Installation

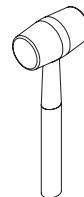
20-21

4. Cantilever Placement

- a. Low Height Tops 22
- b. Worksurface Height Tops 23



Level



Rubber mallet

5. Electrical Installation

- a. 8 Wire Electrical Installation 24-26
- b. 4 Wire Electrical Installation 27-29

6. Straightener Rail Installation

30

7. H-Base Installation

31

8. MBAR Modesty bar installation

32

9. Worksurface Support Installation

33-34

10. Worksurface Installation

- a. Top Placement 35
- b. Clamp Plate Installation 36
- c. L-Bracket Installation 37
- d. Riser Support Installation 38
- e. T-Support Installation 39

11. Shared Shelf/Organizer Installation

40-41

12. Modesty Installation

42-43

13. Privacy Panel Installation

44-45

14. Tackboard Installation

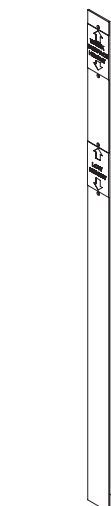
46-48

15. Seat Cushion Installation

49

16. Wall Mounted Storage Installation

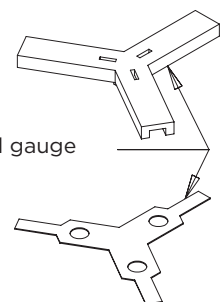
50



Cantilever gauge



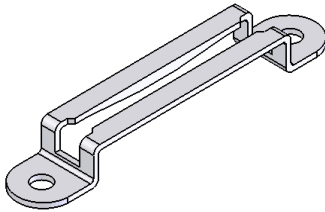
1/8" Drill bit



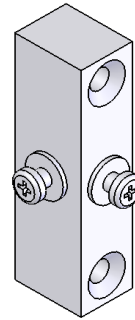
120° Panel gauge

Wall Panels

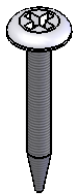
Connector kit part identification



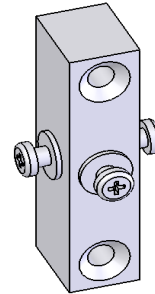
Panel clip



T connection screw block
2 shoulder screws (pre-installed)



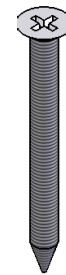
#8 X 1" black phillips pan head screw
Use 2 for each panel clip when machined on edge of panel



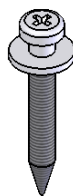
X connection screw block
3 shoulder screws (pre-installed)



#8 X 5/8" black phillips pan head screw
Use two for each panel clip when machined on **face** of panel



#8 X 2" black phillips flat head screw
Use 2 for each screw block

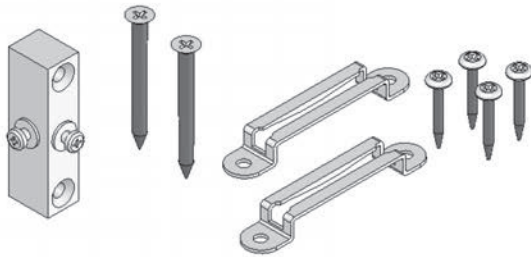


1" shoulder screw
Use when clip pocket is machined on **edge** of panel

Wall Panels

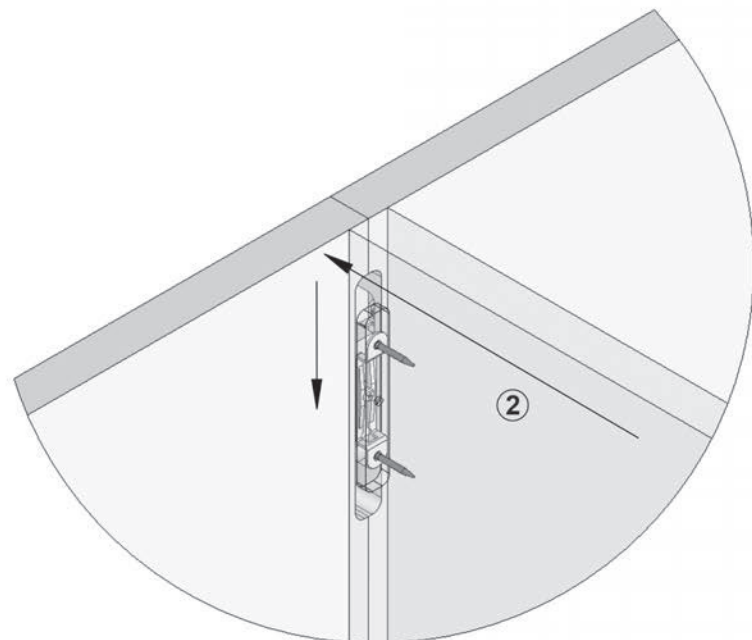
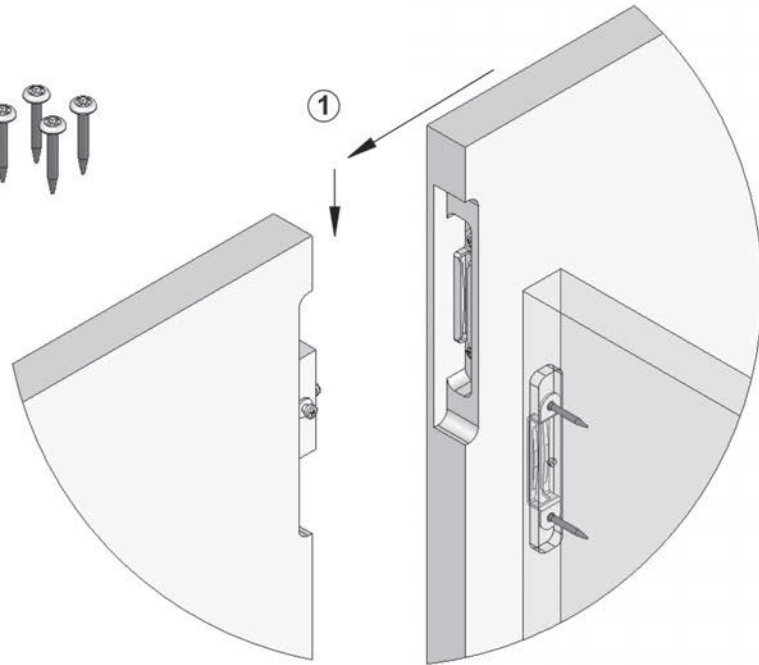
Preparation- T-3 panel connection

Use panel connector kits PCK-1 or PCK-5 for 33"-35"



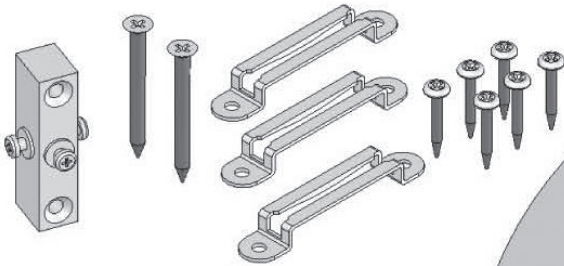
X 3 for PCK-1
(for 36"-48" tall panels)

X 2 for PCK-5
(for panels up to 35" tall)



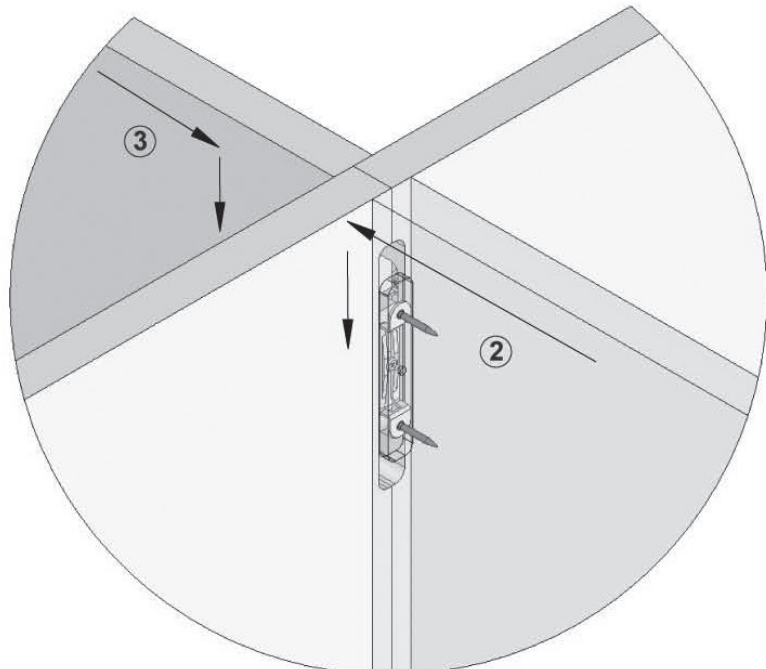
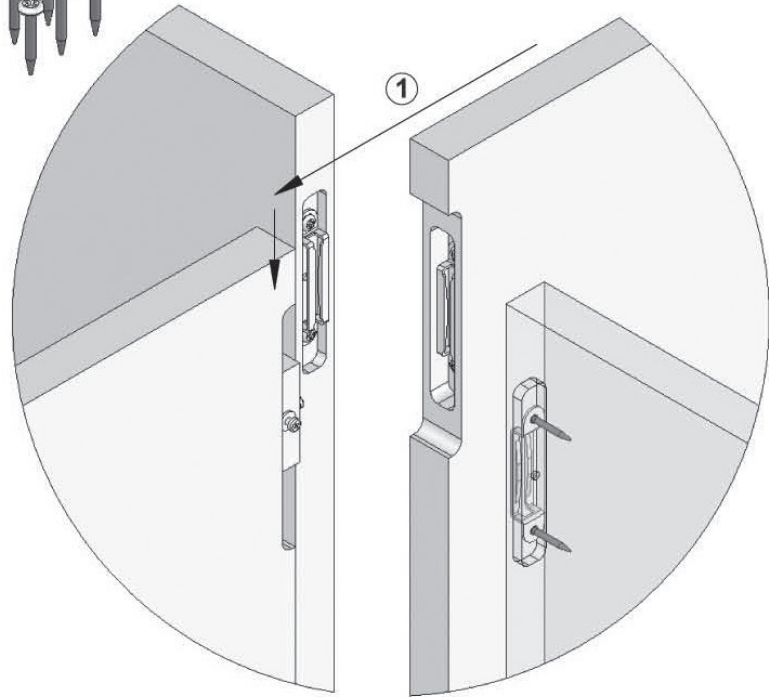
Wall Panels

Preparation- X panel connection



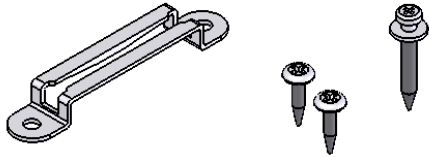
X 3 for PCK-2
(for 26"-48" tall panels)

X 2 for PCK-6
(for panels up to 35" tall)



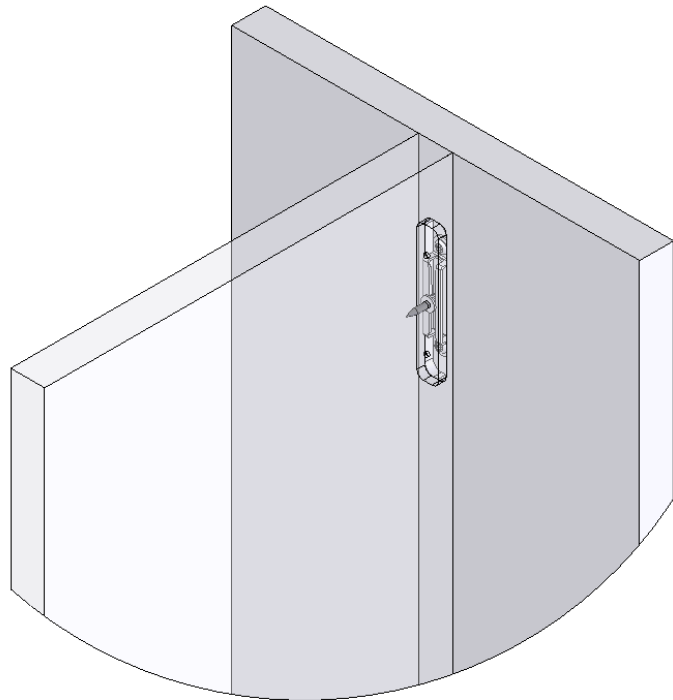
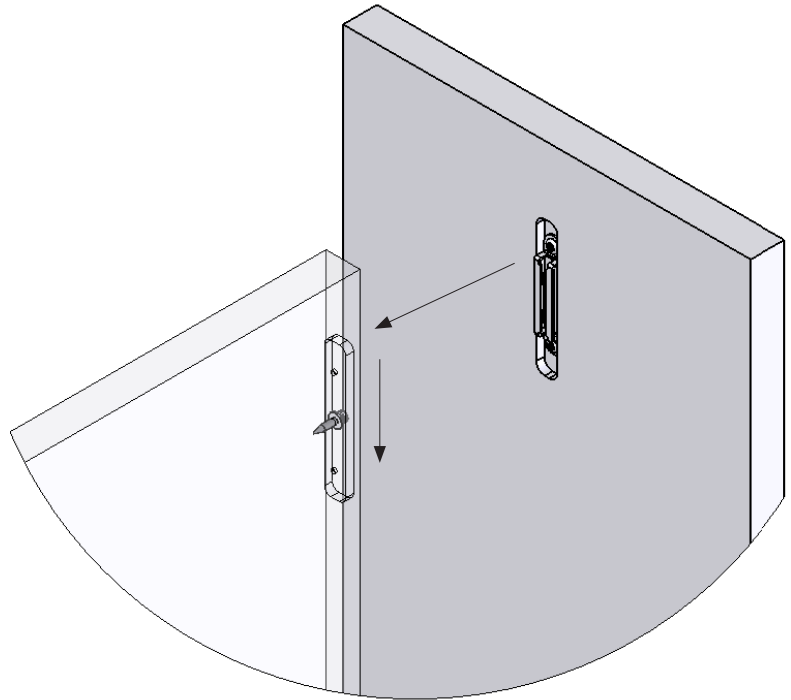
Wall Panels

Preparation- T-2 panel connection



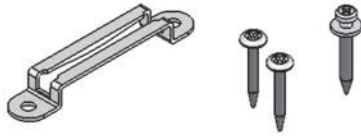
X 3 for PCK-13
(for 36"-48" tall panels)

X 2 for PCK-14
(for panels up to 35" tall)



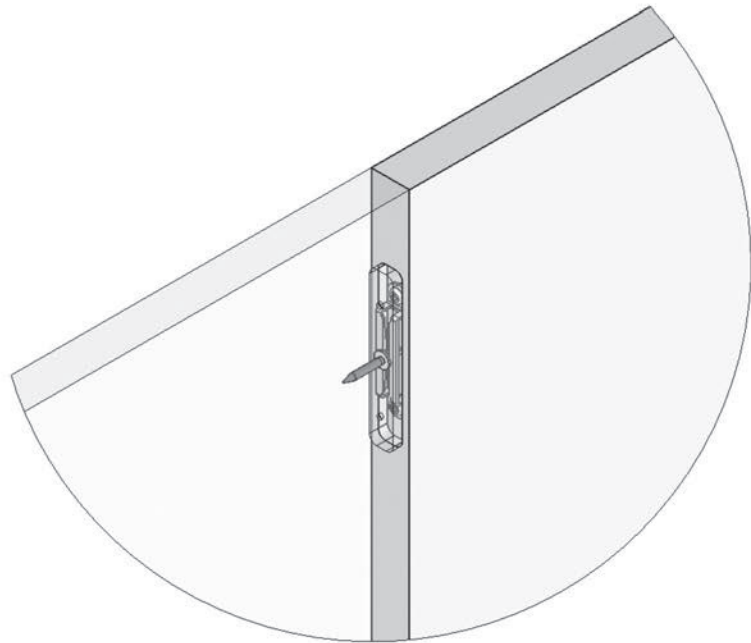
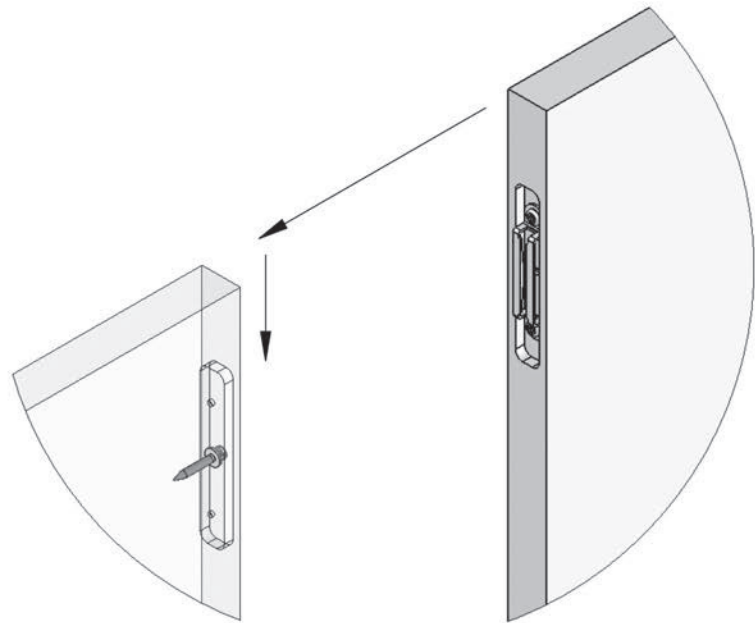
Wall Panels

Preparation- In-line panel to panel connection



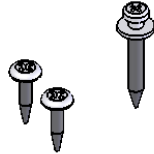
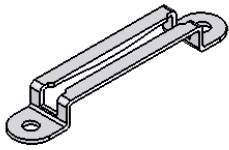
X 3 for PCK-3
(for 36"-48" tall panels)

X 2 for PCK-7
(for panels up to 35" tall)



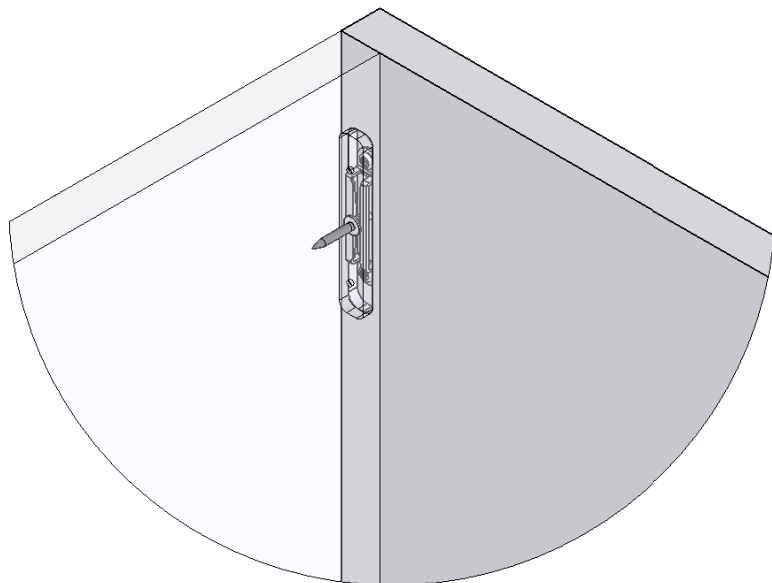
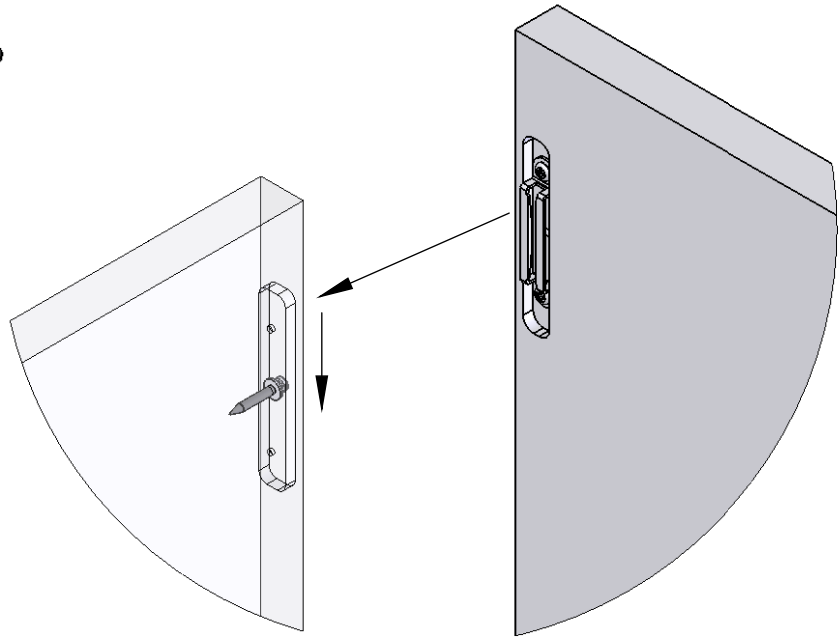
Wall Panels

Preparation- L panel connection



X 3 for PCK-13
(for 36"-48" tall panels)

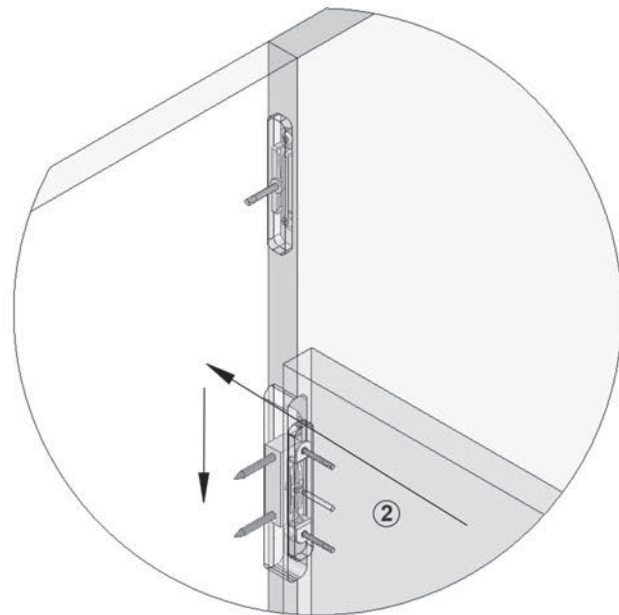
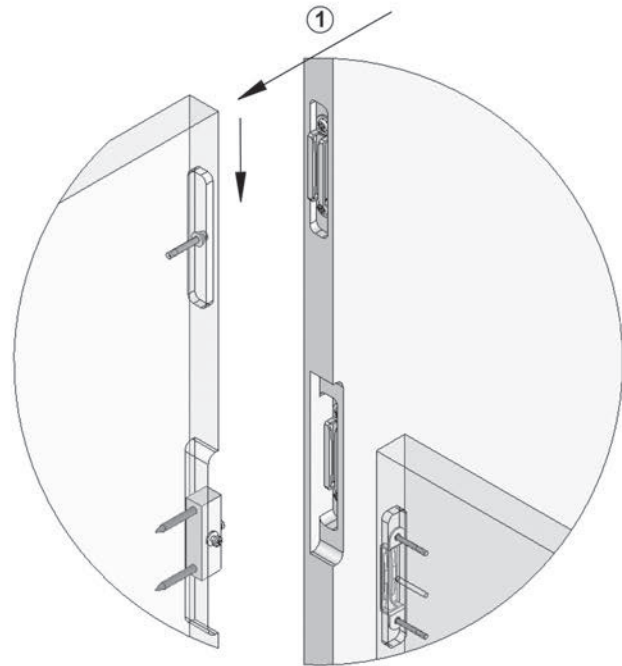
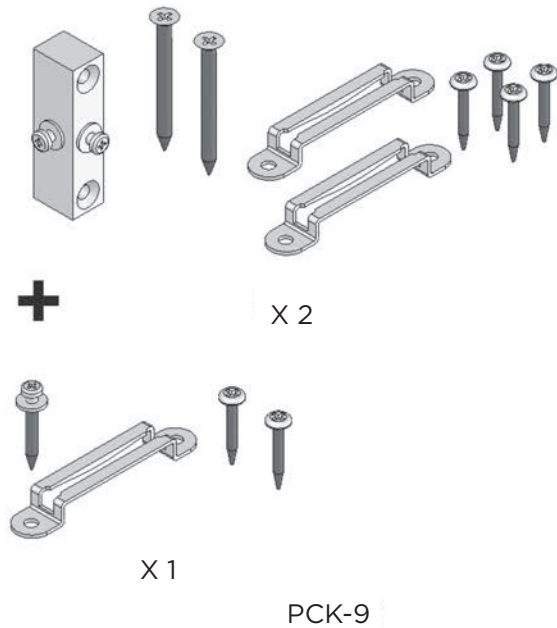
X 2 for PCK-14
(for panels up to 35" tall)



Wall Panels

Preparation- T-3 panel connection

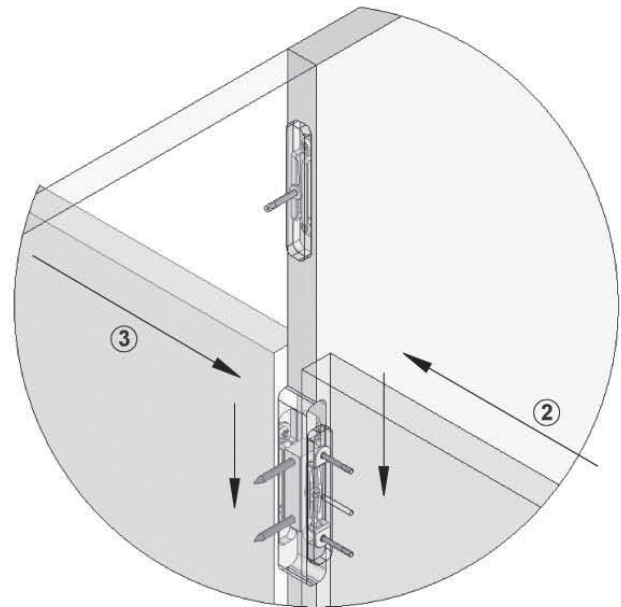
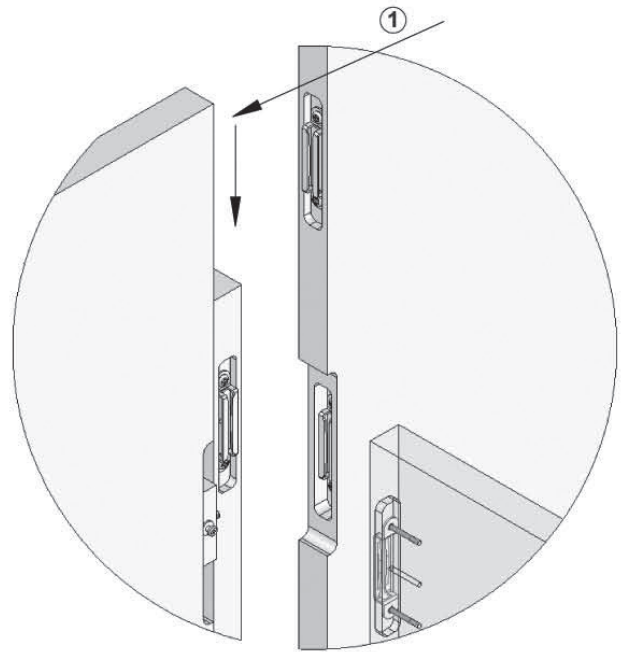
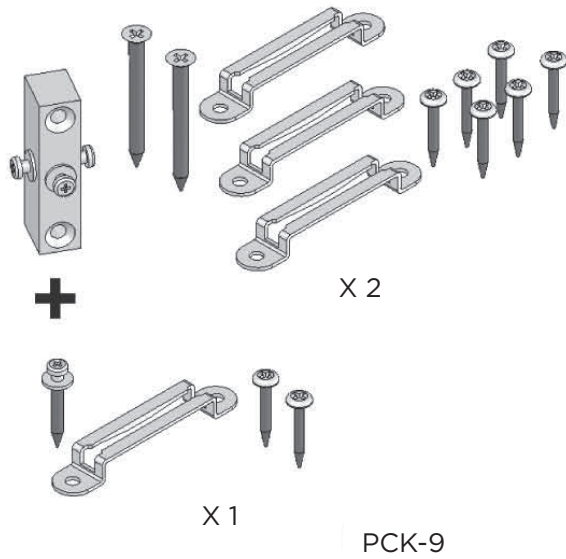
(2) 42" or 48" tall panels connected to (1) 33" panel



Wall Panels

Preparation- X panel connection

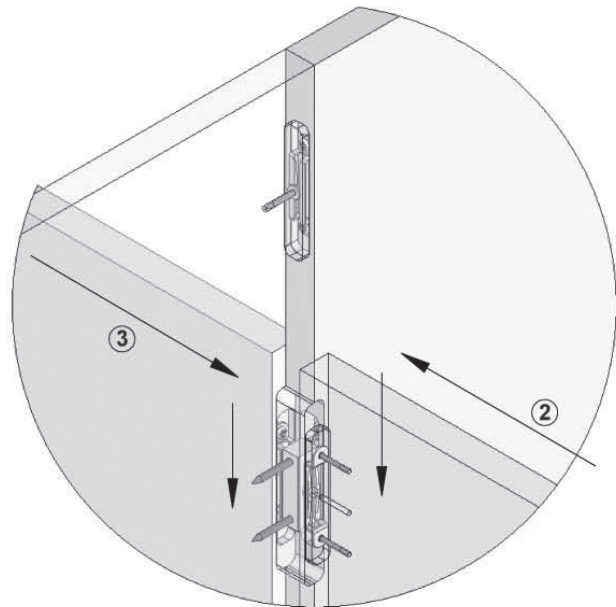
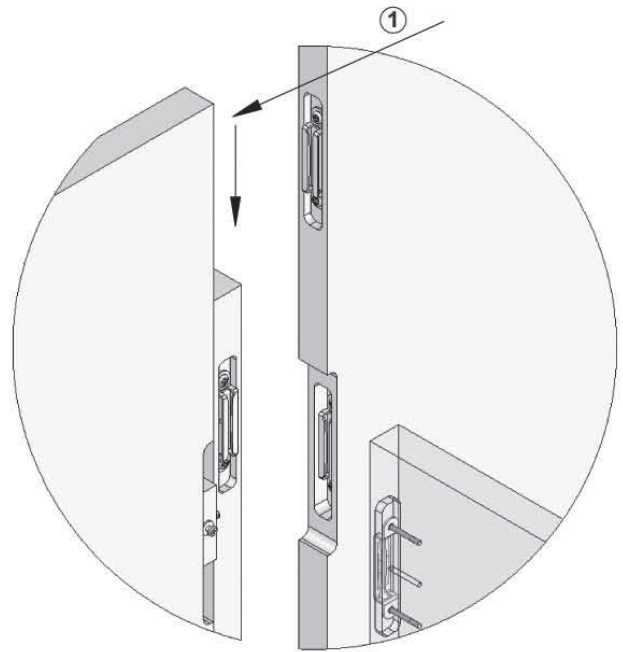
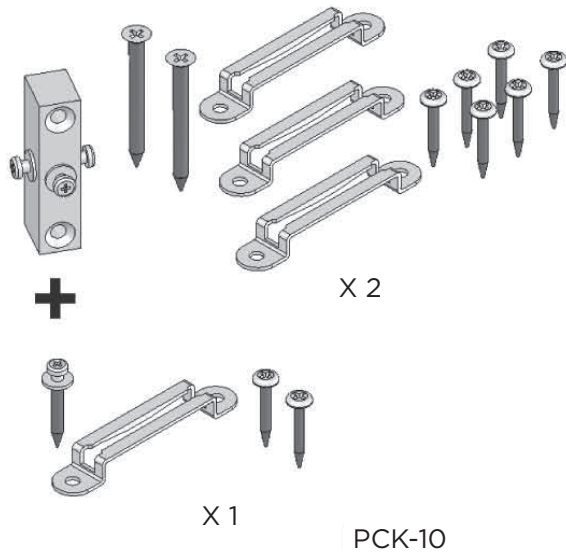
(2) 42" or 48" tall panels connected to (2) 33" panel



Wall Panels

Preparation- Intersection High Point

(2) 48" tall panels connected to (1) 42" panel

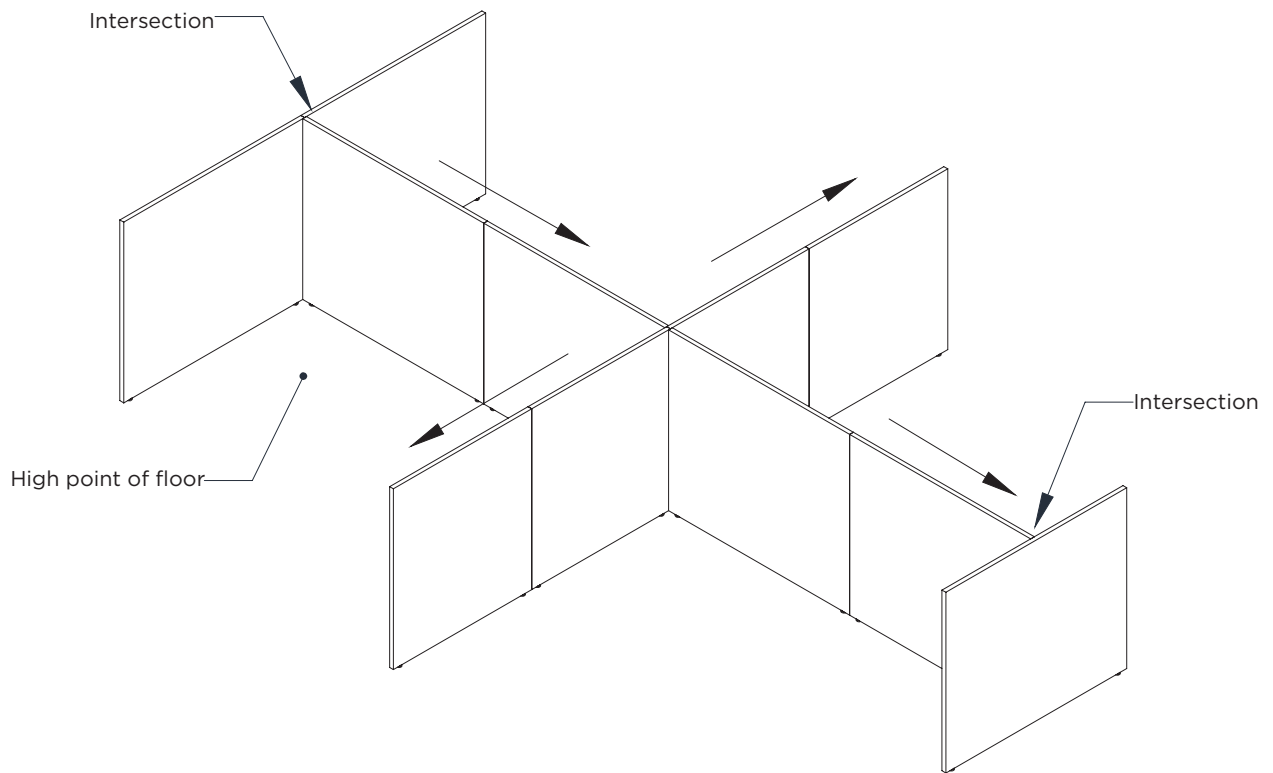


Wall Panels

Note: Leave shrink wrap and pack tags intact while staging panels for easier identification while installing.

See wall plan drawing for locations of panels, power infeeds, and data ports.

1. Check power and data locations before assembling panels.
2. Panel assemblies can be moved more easily before other components are installed.
3. Access holes can be more easily drilled before other components are installed.
4. Start installing panels at an intersection.
5. If possible, start panels are the highest point of an uneven floor.
6. Level all panels before attaching any other components.



Wall Panels

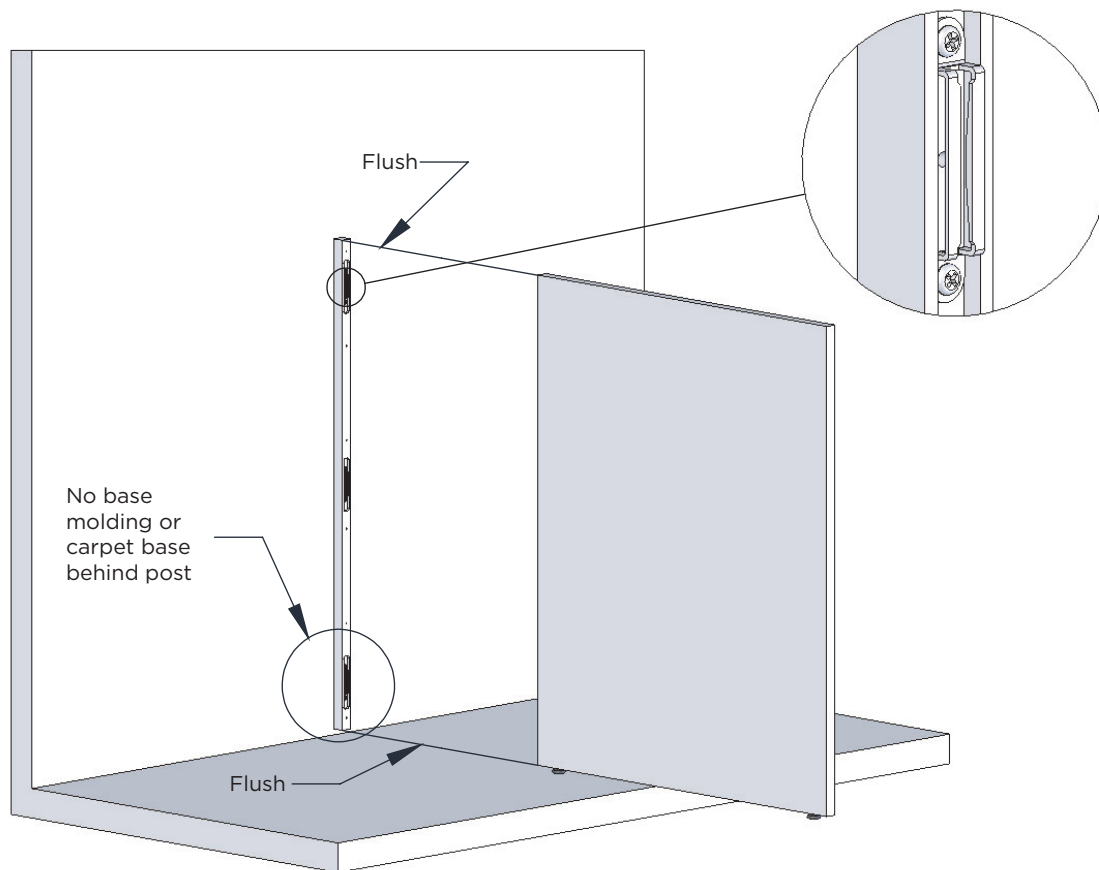
Starter Post Installation

When installing a starter post, consider the condition of the floor and the wall where the post is mounted.

- Is the floor even and level?
- Are there any high spots on the floor?
- Is the wall plumb?

When correctly installed, the starter post will be plumb and flush to the top and bottom of the first wall panel.

If possible, position wall panels, as shown on the wall panel installation instructions on the proceeding page, to determine where the starter post needs to be located on the wall.



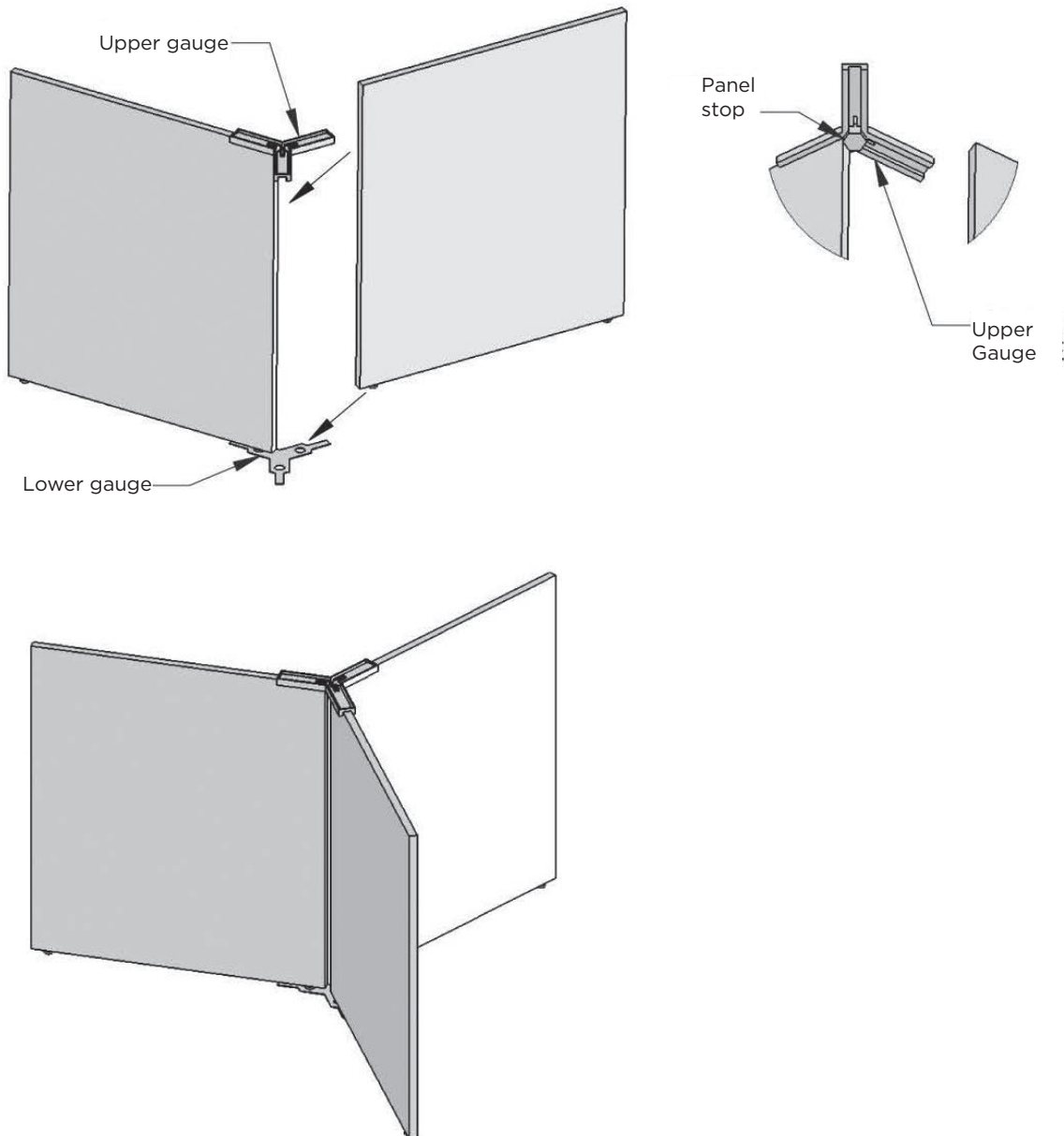
1. Remove or cut away any base molding or carpet base so starter post can be mounted flush to the wall.
2. If needed, scroll cut the starter post so the face that mounts to the panel is plumb.
3. Attach starter post to wall using fasteners that are appropriate for the wall. Mounting holes may require counter-boring so the fastener is not past flush the face of the starter post.
4. Install panel clips in routed pockets.
5. Fasten panel to post.

Wall Panels

120° corner unit installation

The 120° tool Kit is item number TOOL-3.

1. Place lower gauge on the floor where the three panels are to meet.
2. Position levelers in the holes of the lower gauge.
3. Place upper gauge on top edge of panels with panels against panel stop.
4. The upper gauge will temporarily hold panels in place until secured by cantilevers and worksurfaces.

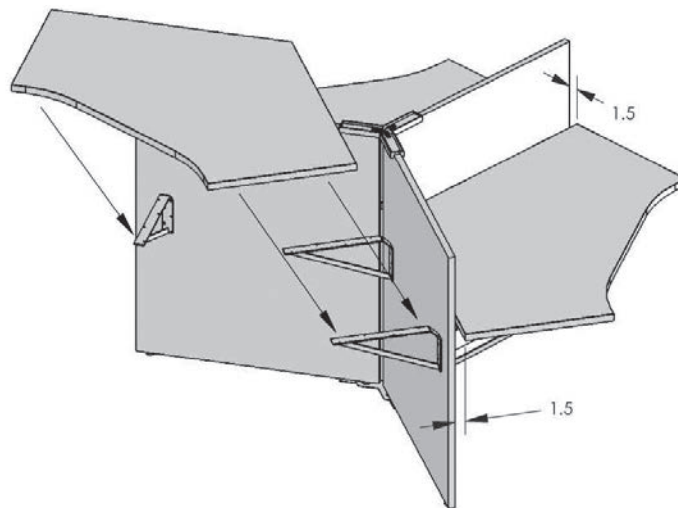
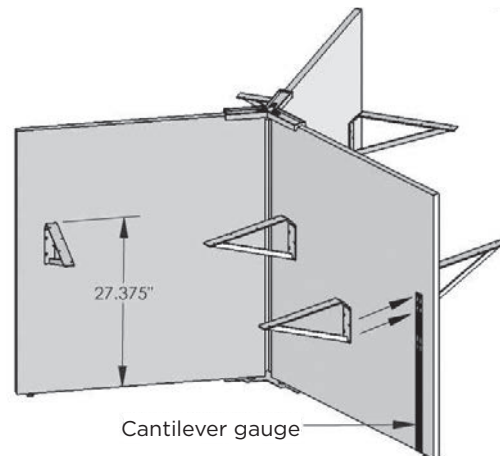
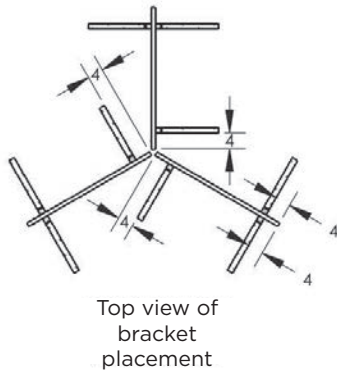


Wall Panels

120° corner unit installation

See bracket plan drawing for locations of cantilever brackets and pedestals placement.

1. Position cantilever brackets as shown on top view diagram (right) unless otherwise specified.
2. Use cantilever gauge to pilot bore two holes at worksurface height.
3. Use two screws in slotted holes on cantilever bracket from HK-81.
4. Make sure top of bracket is 27 3/8" from bottom edge of panel, adjust if needed.
5. Use two more screws to secure bracket in place from HK-81.
6. Place worksurfaces on cantilever brackets with 11/2" space between tops and panels.
7. Screw tops to cantilever brackets.
8. Remove upper and lower panel gauges (panel jack may be needed).



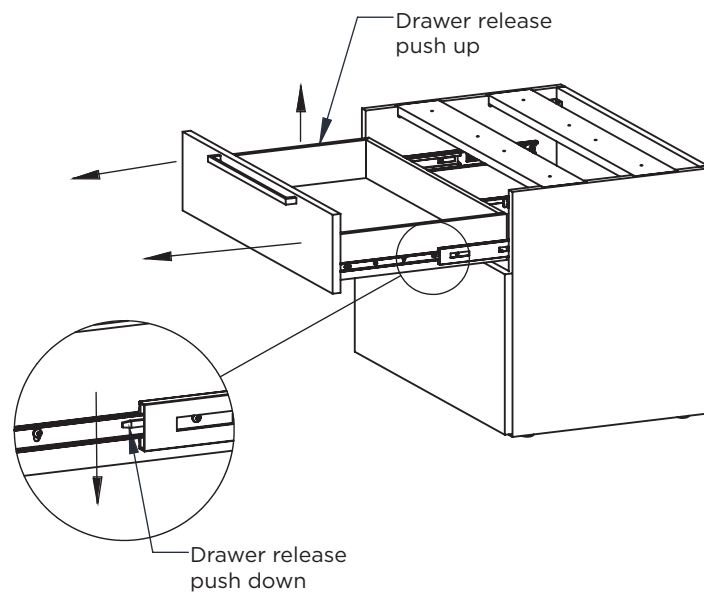
Pedestal Preparation

Drawer removal

Drawers must be removed for pedestal installation.

Drawer Removal

1. Open drawer to full extension.
2. Push drawer release on right hand slide down and at the same time, push drawer release on the left hand slide up.
3. Pull drawer forward until free from slides.
4. Secure pedestal to top using screws.
5. If applicable, secure to wall panel using pedestal bracket.

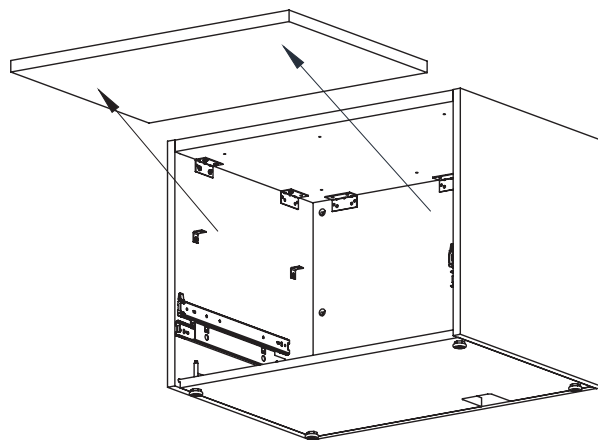
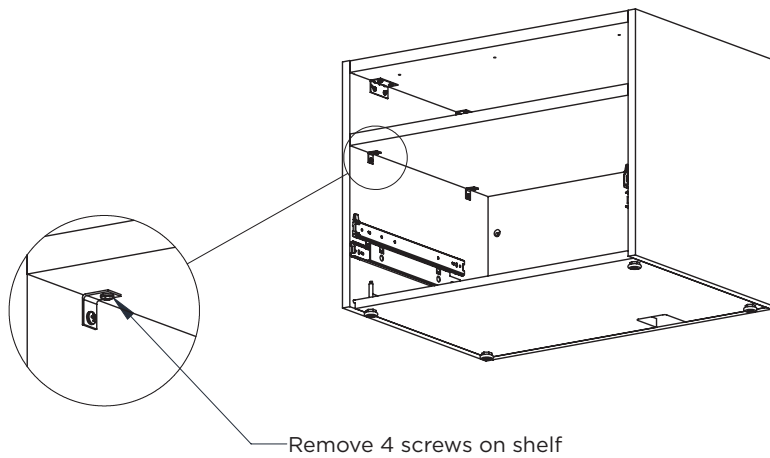


Pedestal Preparation

Shelf removal

Shelf in open shelf pedestals must be removed for access to screw holes for pedestal installation.

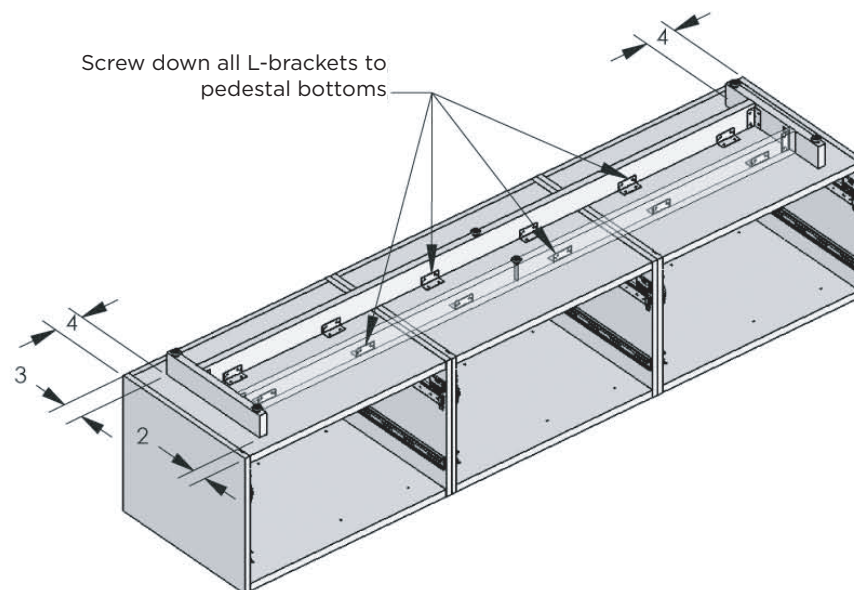
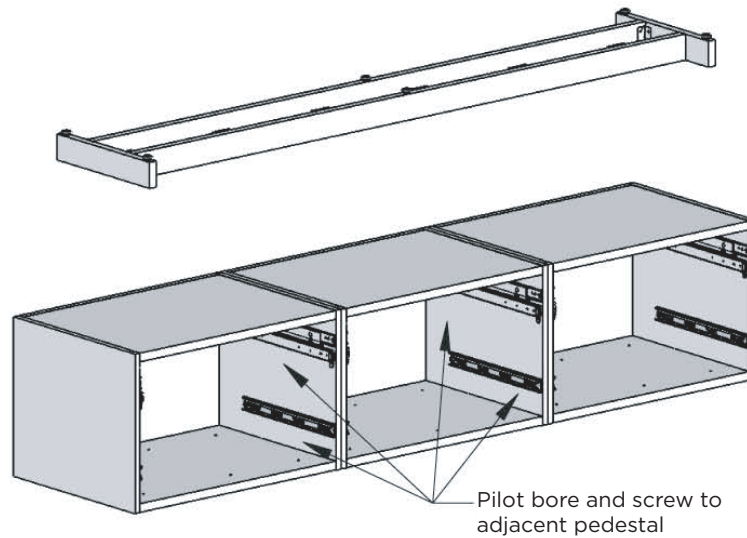
1. Remove drawer below shelf.
2. Remove four screws from L-brackets that hold shelf in place.
3. Do not remove screws from end panels.
4. Remove shelf.
5. Replace shelf and secure with screws after installation.



Pedestal Preparation

Riser beam installation.

1. Turn pedestals upside down and place side to side.
2. Pilot bore and screw pedestals together using #8 x 1 1/4" pan head screws (Hardware Kit HK-110).
3. Place riser beam on pedestal assembly with 4" spacing on both sides and 2" spacing on the front.
4. Attach riser beam to pedestal assembly by screwing L-brackets to pedestals using #8 x 5/8" pan head screws (Hardware Kit HK-9).



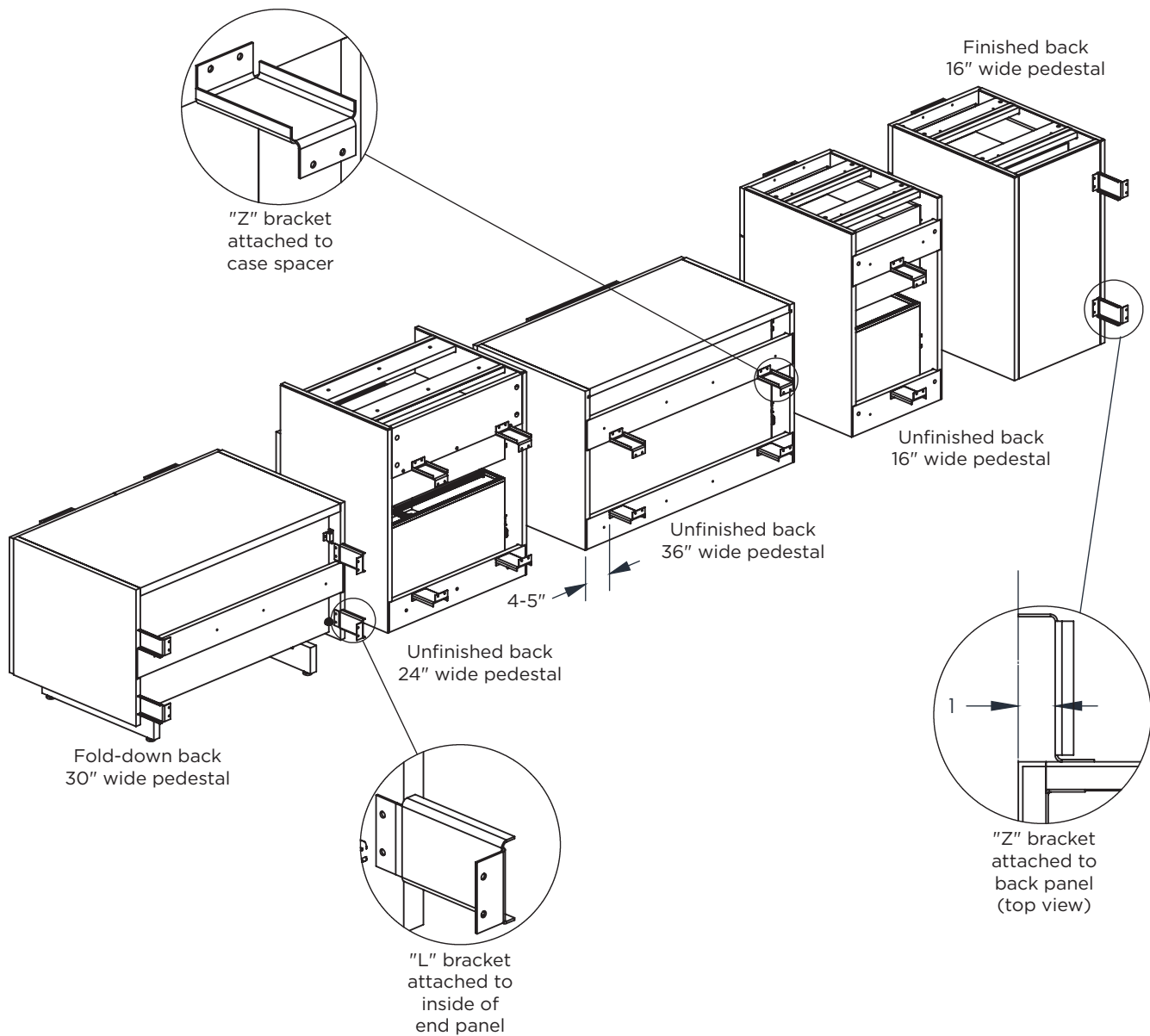
Pedestal Preparation

Pedestal bracket installation

Bracket quantities

1 pair - 16" wide pedestals

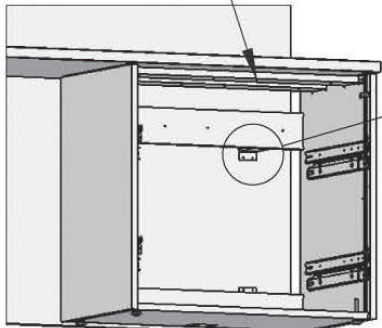
2 pairs - 24", 30", & 36" wide pedestals



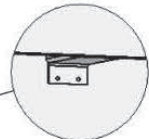
Pedestal Preparation

Pedestal bracket installation

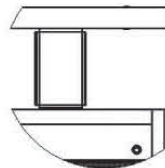
Attach case spacers
to worksurface



Worksurface height
unfinished back

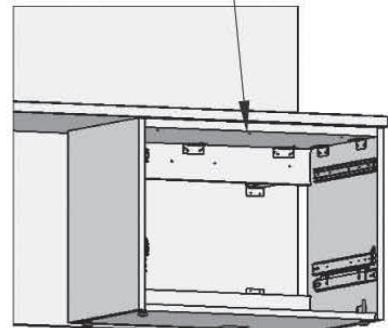


Attach brackets
to wall panel
PEDBKT-2



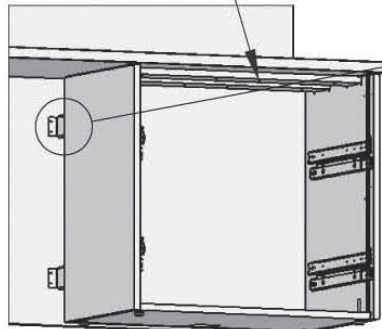
Top view

Attach top panel
to worksurface

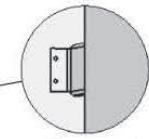


Low height
unfinished back

Attach case spacers
to worksurface



Worksurface height
finished back

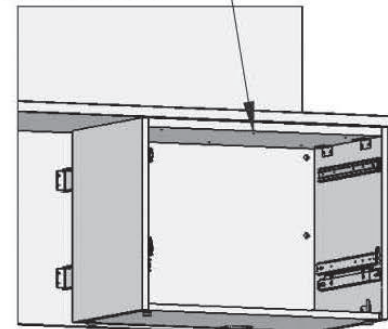


Attach brackets
to wall panel
PEDBKT-2



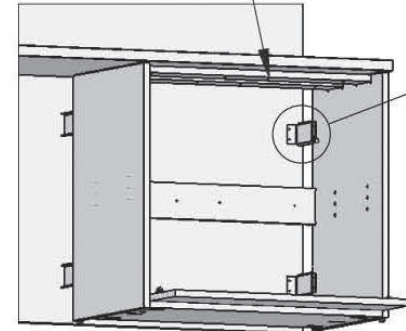
Top view

Attach top panel
to worksurface

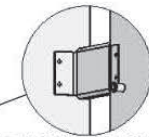


Low height
finished back

Attach case spacers
to worksurface



Worksurface height
fold-down back

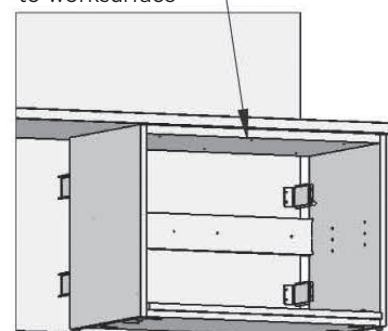


Attach brackets
to wall panel
PEDBKT-2



Top view

Attach top panel
to worksurface

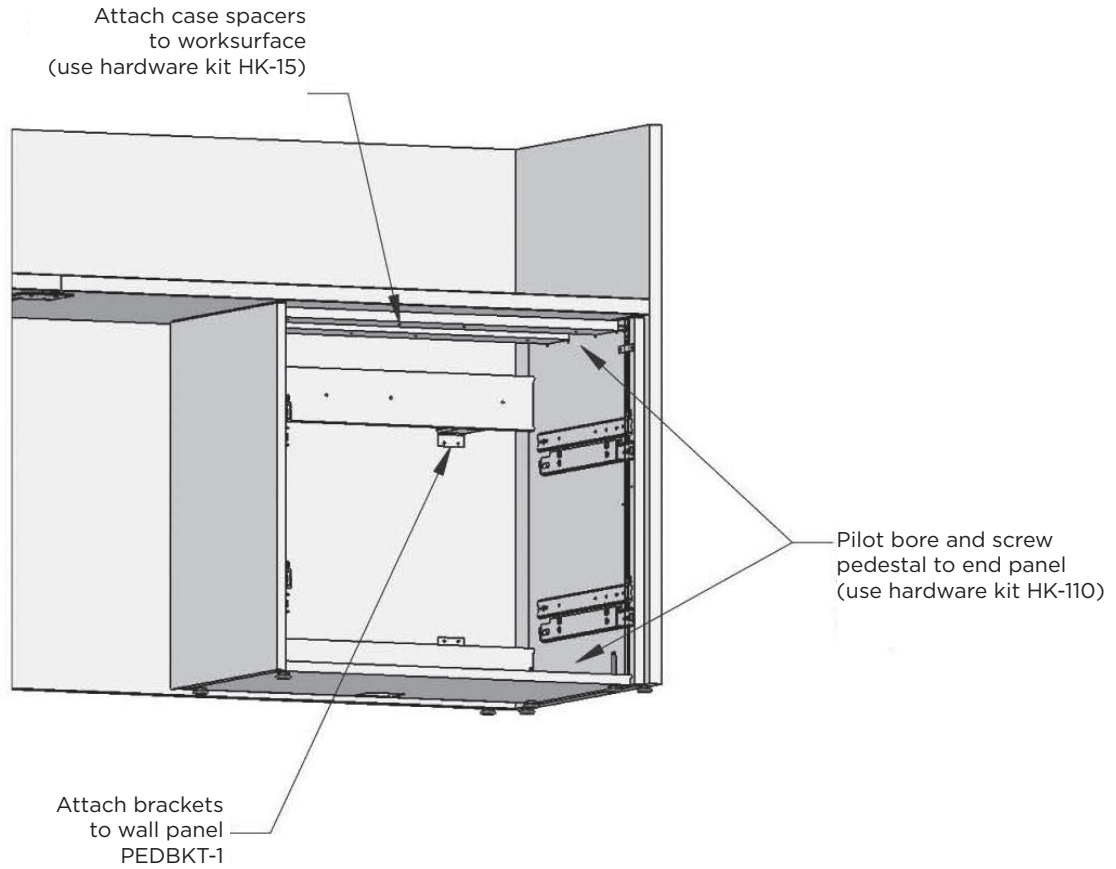


Low height
fold-down back

* use hardware kit
HK-15

Pedestal Preparation

Pedestal attached to end panel



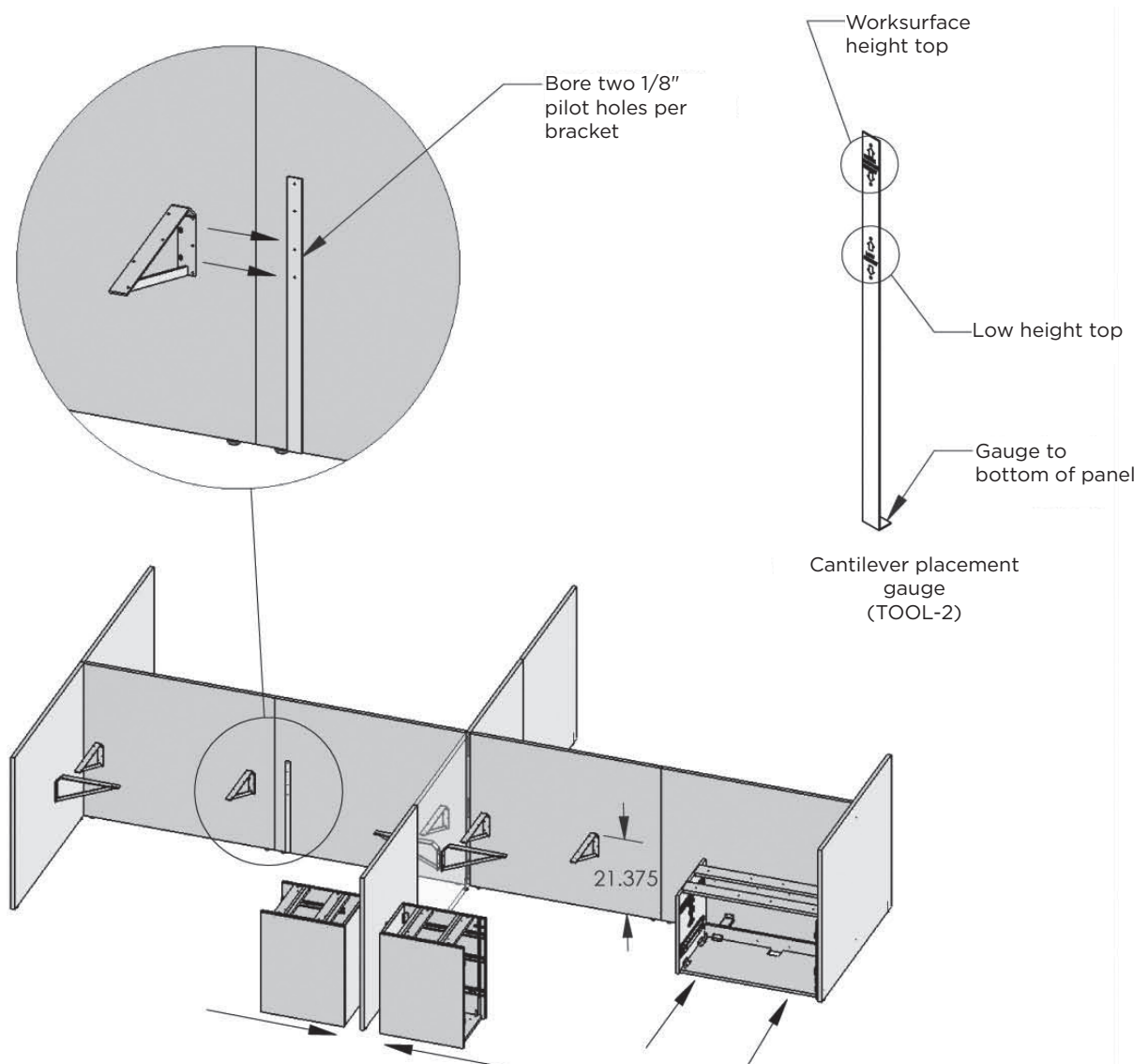
Cantilever Placement

Low height tops

See bracket plan drawing for locations of cantilever brackets and pedestal placement.

Note: Cantilever tool is not required, but does simplify installation.

1. Place pedestals in place- do not attach to panels at this time.
2. Position cantilever brackets as shown on bracket drawing.
3. Use two screws from HK-81 in slotted holes.
4. Make sure top of bracket is 21 3/8" from bottom edge of panel, adjust if needed.
5. Use two more screws from HK-81 to secure bracket in place.



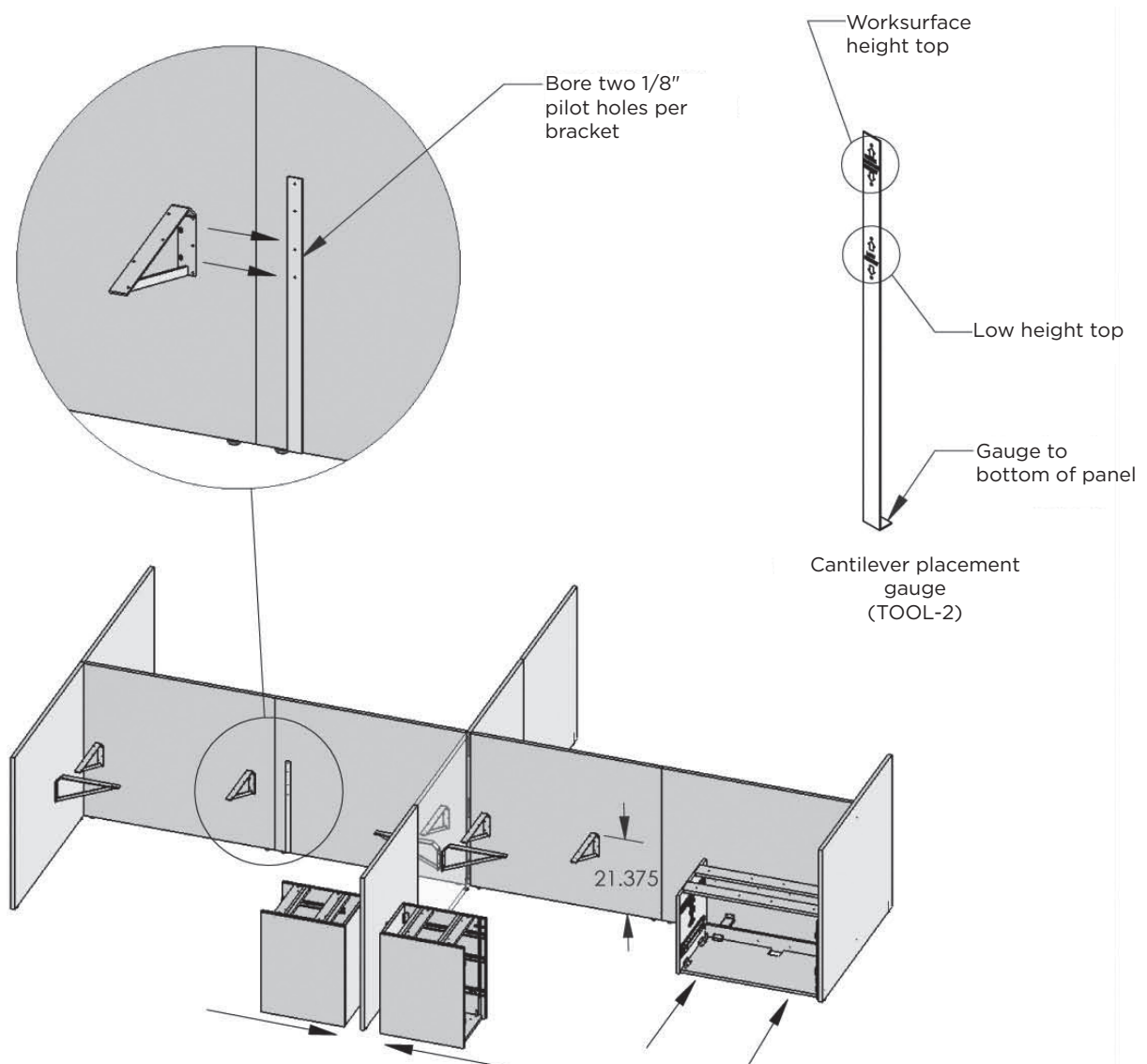
Cantilever Placement

Worksurface height tops

See bracket plan drawing for locations of cantilever brackets and pedestal placement.

Note: Screws ship in box with cantilever.

1. Place pedestals in place- do not attach to panels at this time.
2. Position cantilever brackets as shown on bracket drawing.
3. Use two screws from HK-81 in slotted holes.
4. Make sure top of bracket is 27 3/8" from bottom edge of panel, adjust if needed.
5. Use two more screws from HK-81 to secure bracket in place.

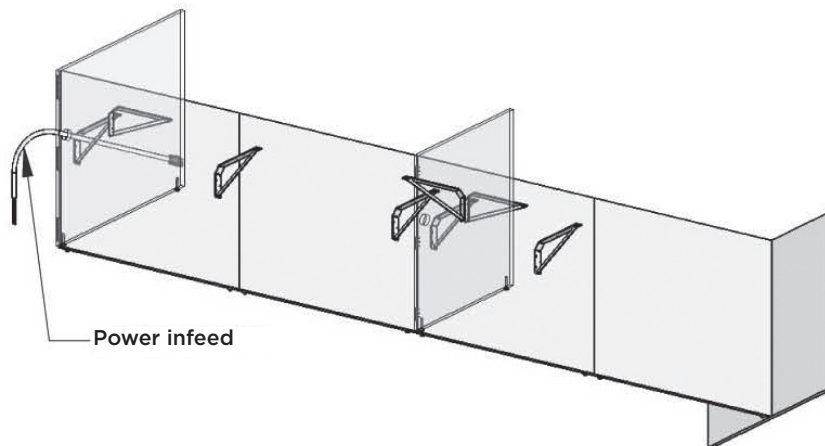
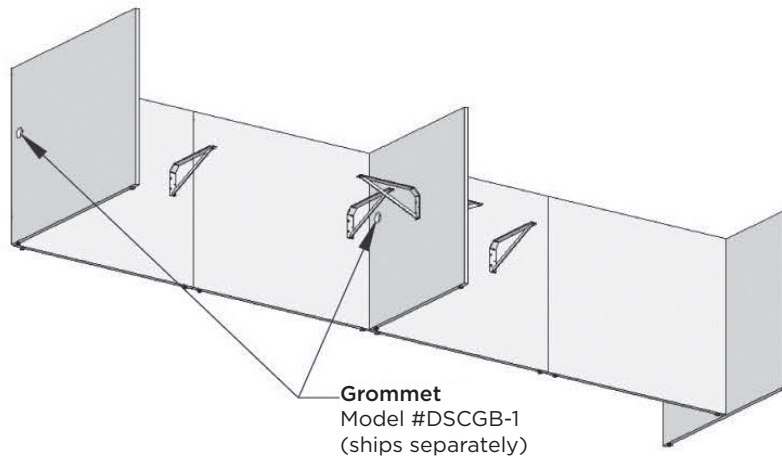


Electrical Installation

8 wire electrical installation

Refer to electrical plan drawing for:

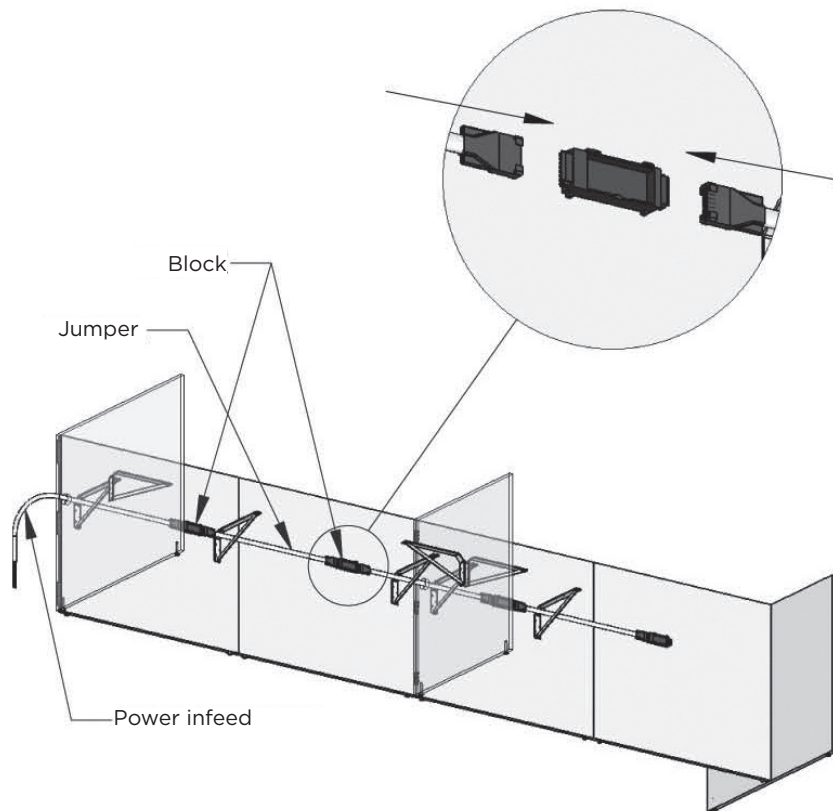
- Electrical components needed
 - Locations of electrical components
 - Grommet hole locations
1. Refer to electrical plan drawing to determine grommet locations.
 2. Drill 2 3/8" diameter holes through panels where indicated.
 3. Install grommets in panels.
 4. Power infeed must be installed by licensed electrician.



Electrical Installation

8 wire electrical installation

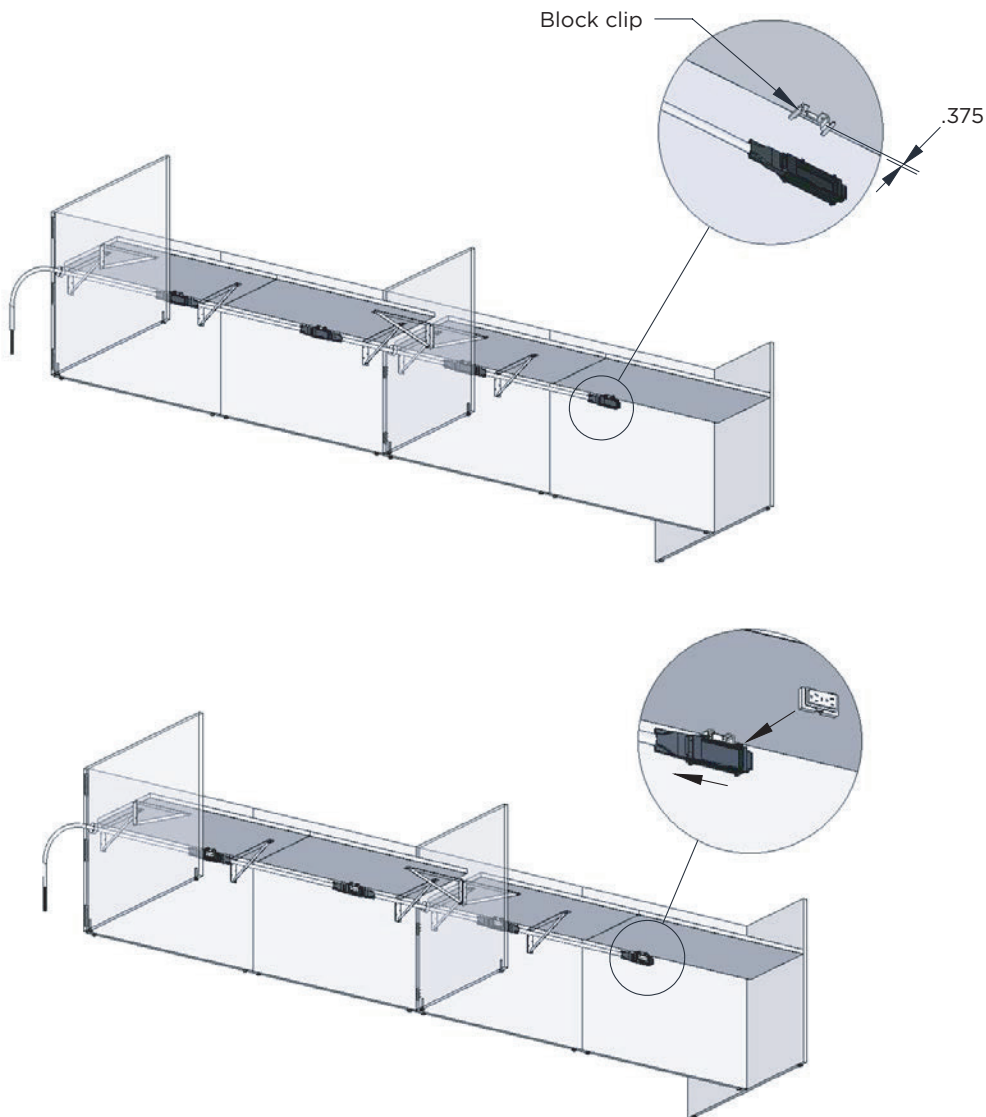
5. Install in wall or floor outlet. Refer to electrical plan drawing to determine components needed and locations for components.
6. Route jumpers through cable management holes in cantilever brackets and through grommet holes in panels.
7. Snap blocks and jumpers together to create chain according to electrical plan drawing.
8. Attach power infeed to chain.
9. Leave chain in place until worksurfaces and pedestals have been installed.



Electrical Installation

8 wire electrical installation

1. Slide block clip into grooves on top of block and snap in place.
2. Position block clip 3/8" from back edge of worksurface and screw in place.
3. Repeat for all blocks.
4. Refer to electrical plan drawing for locations and receptacles.
5. Match circuit numbers to electrical plan drawing.
6. If receptacle locations do not match plan drawing, circuits can be overloaded.
7. Push receptacle straight back into opening in block face.
8. Slide receptacle to the left until locked into place.

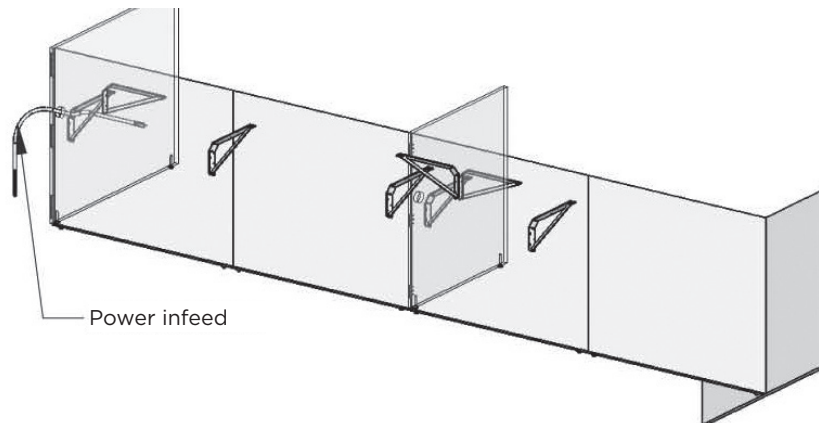
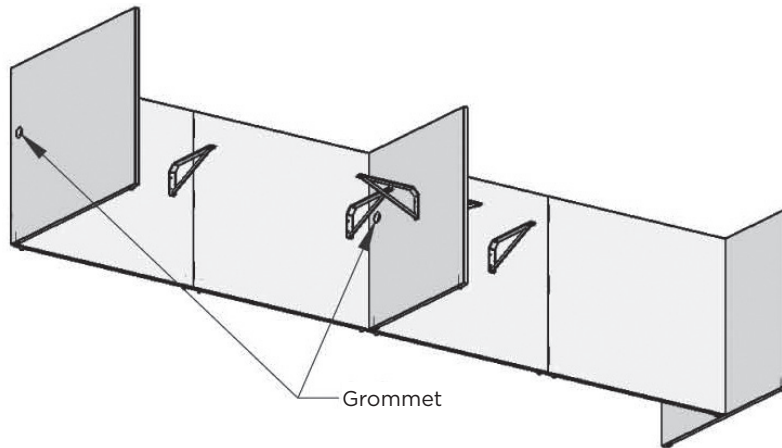


Electrical Installation

4 wire electrical installation

Refer to electrical plan drawing for:

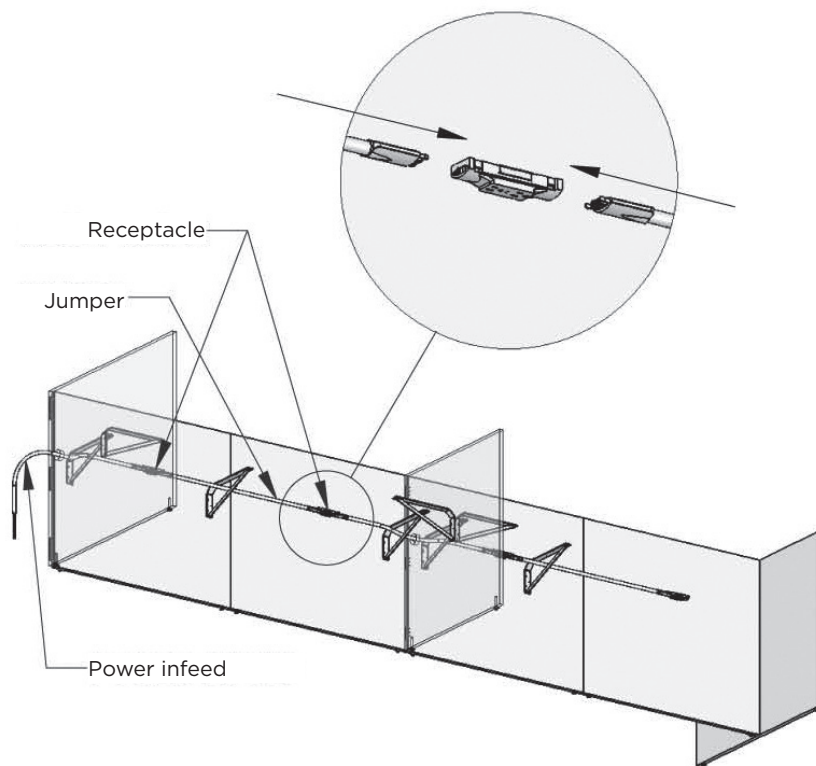
- Electrical components needed
 - Locations of electrical components
 - Grommet hole locations
1. Refer to electrical plan drawing to determine grommet locations.
 2. Drill 2 3/8" diameter holes through panels where indicated.
 3. Install grommets in panels.
 4. Power infeed must be installed by licensed electrician.
 5. Install in wall or floor outlet.



Electrical Installation

4 wire electrical installation

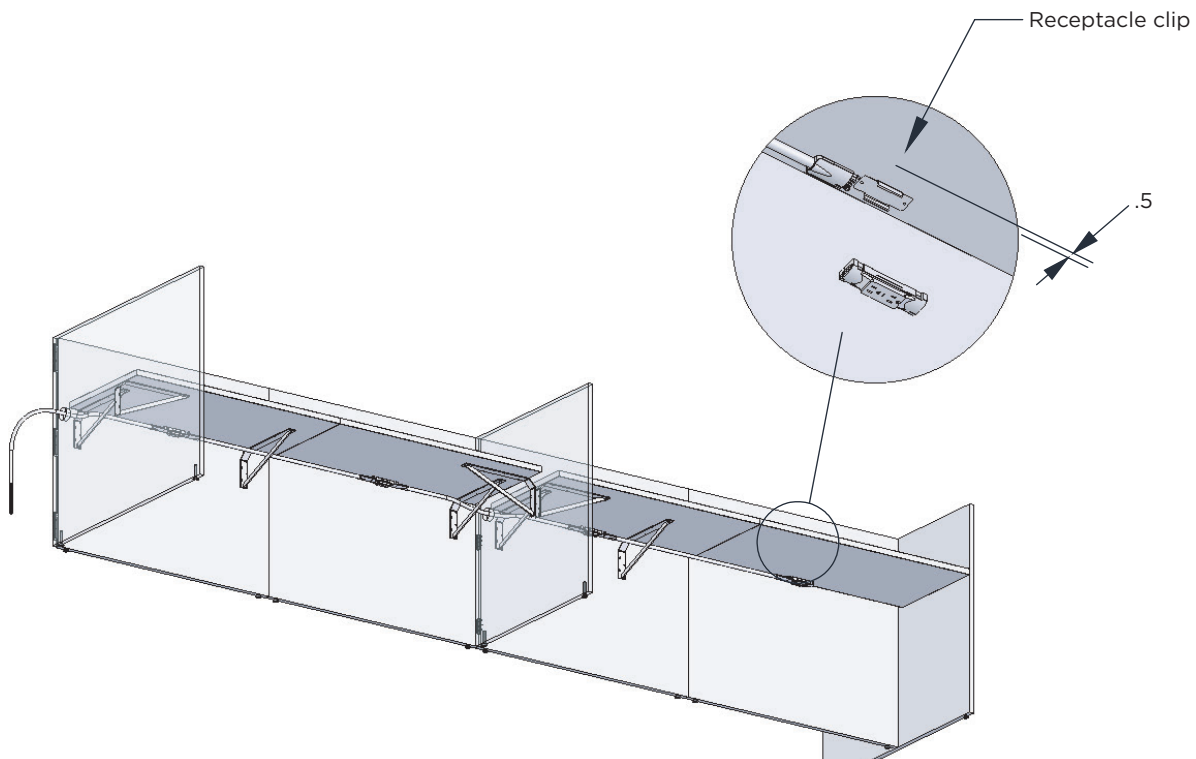
6. Refer to electrical plan drawing to determine components needed and locations for components.
7. Route jumpers through cable management holes in cantilever brackets and through grommet holes in panels.
8. Snap blocks and jumpers together to create chain according to electrical plan drawing.
9. Attach power infeed to chain.
10. Leave chain in place until worksurfaces and pedestals have been installed.



Electrical Installation

4 wire electrical installation

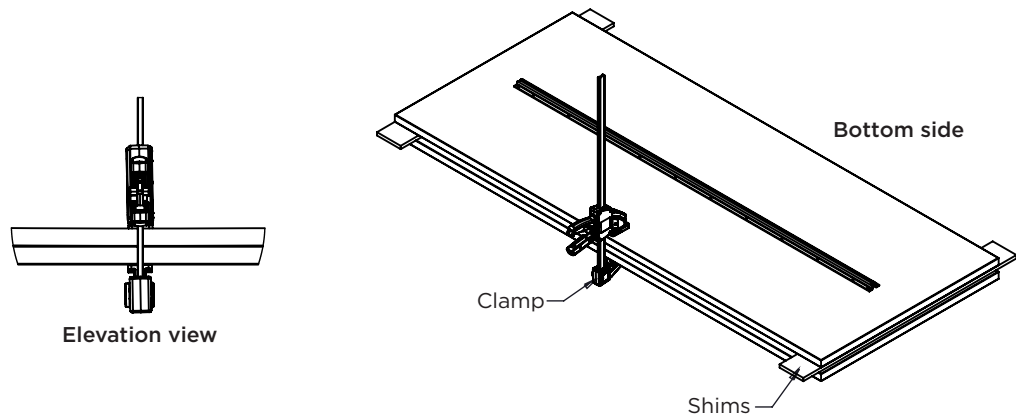
1. Refer to electrical plan drawing for locations of receptacles.
2. Match circuit numbers to electrical plan drawing. Circuit numbers appear on the face of each receptacle.
3. If receptacle locations do not match plan drawing, circuits can be overloaded.
4. Hold receptacle in specified location against bottom of worksurface and pencil mark clip location; approximately 1/2" from back edge of worksurface.
5. Remove receptacle and screw clip in place.
6. Snap receptacle into clip.



Straightener Rail Installation

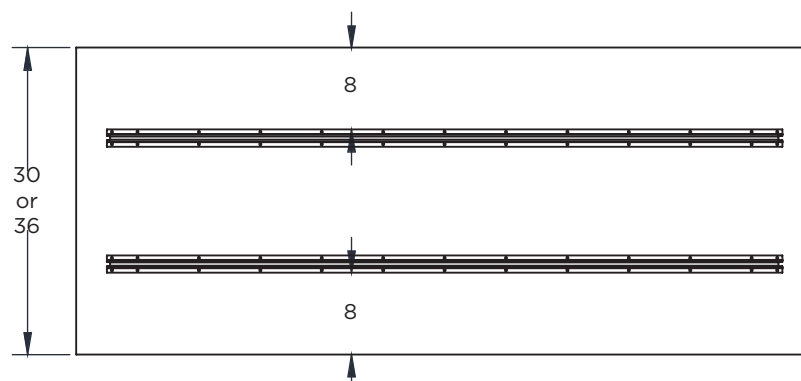
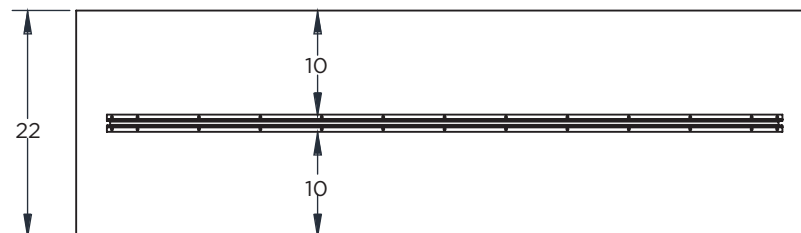
Use straightener rails on unsupported areas of worksurfaces.

1. Create a workspace to allow you to reverse bow the worksurface. The workspace should be large enough to accommodate the worksurface size.
2. Place the worksurface upside down and add ¼" to ½" thick shims at each end, between your workspace surface and the worksurface you are applying the straightener rail to.
3. Clamp your workspace surface and worksurface together near the center to create a slight reverse bow. Additional clamps may be needed depending on the worksurface length.
4. Attach the straightener rail based on the worksurface depth using the provided hardware, see below for sizing and placement reference.
5. Remove clamps and shims, and attach the worksurface to pedestals and/or supports as needed.

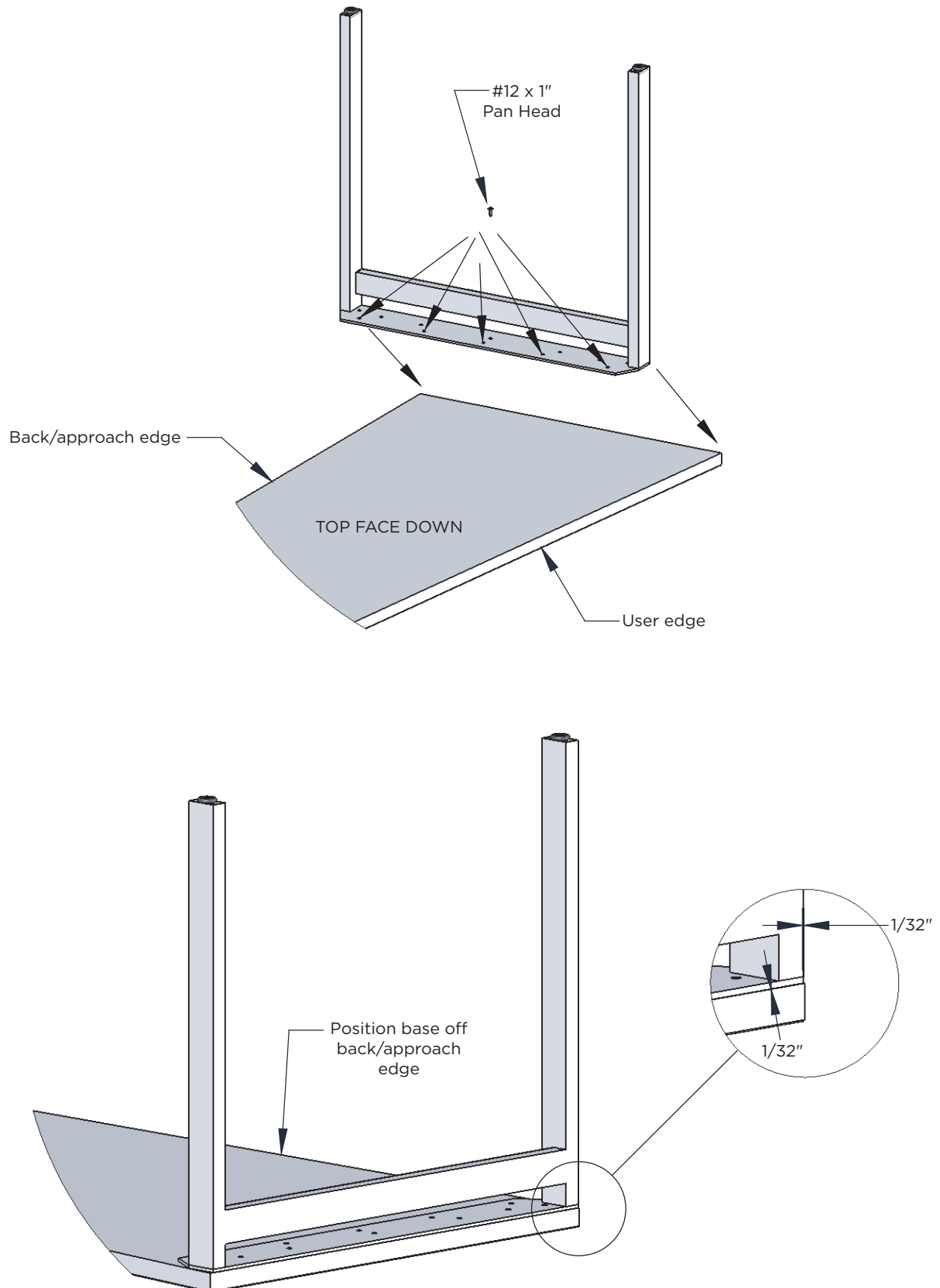


- **SPTR48** for 48-54" unsupported area use Hardware Kit **HK-21**
- **SPTR54** for 55-60" unsupported area use Hardware Kit **HK-22**
- **SPTR60** for 61-66" unsupported area use Hardware Kit **HK-23**
- **SPTR66** for 67-78" unsupported area use Hardware Kit **HK-25**

1. Center the rail in the unsupported area and space as shown on diagram below.



H-Base Installation



MBAR Installation

1. Install support rails on the underside of the worksurface (**Figure A**). See installation instructions for that [here](#).
2. Install one leg on one end of the worksurface (**Figure B**). See installation instructions for that [here](#).
3. Attach the modesty bar (MBAR) to the leg by using the self-tapped screws that came with the modesty bar. Attach the modesty bar to the worksurface by using the wood screws that came with the modesty bar. (**Figure C**).
4. Attach the other leg to the worksurface and modesty bar. Attach the modesty (optional) to the modesty bar by using the wood screws that came with the modesty bar. (**Figure D**)

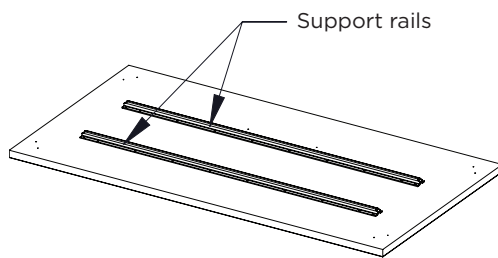


Figure A

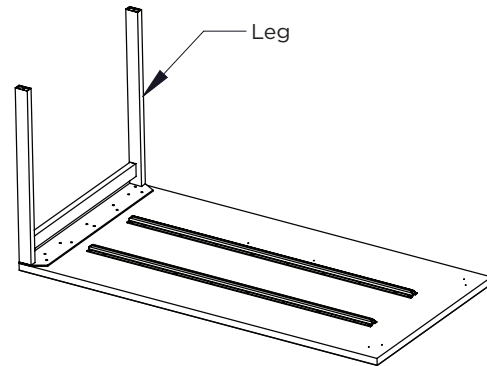


Figure B

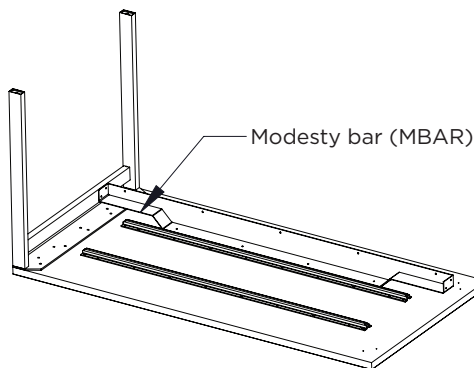


Figure C

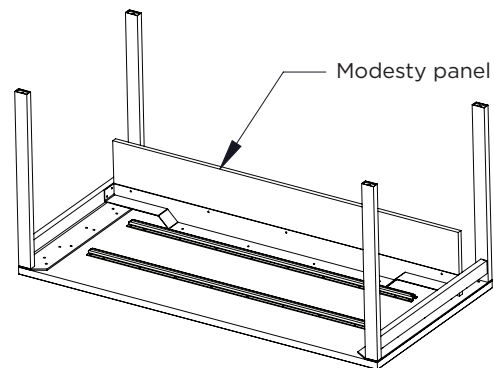
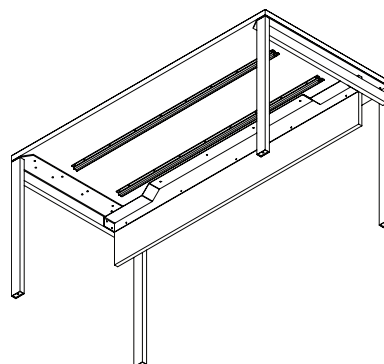


Figure D



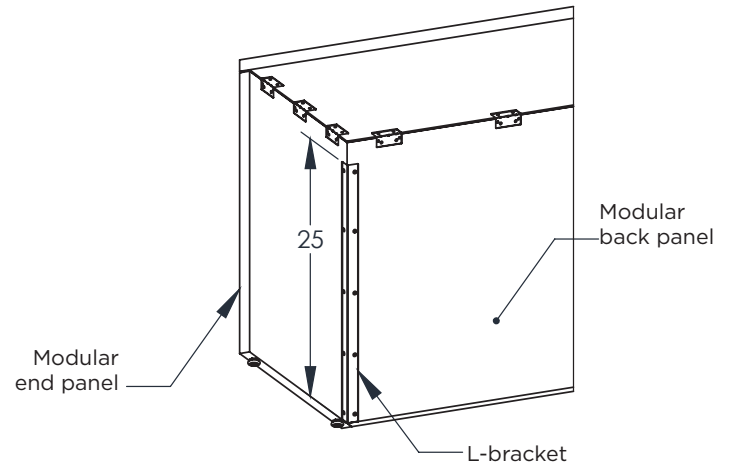
Completed desk
(underside view)

Worksurface Support Installation

End Support

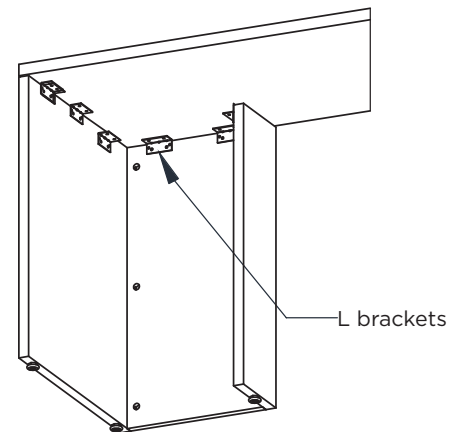
Modular End Panel

1. Position end panel flush to edge and back of top.
2. Screw L-brackets to top using #10 x 5/8" pan head screws (Hardware Kit HK-10).
3. Position modular back panel against modular end panel and flush to back edge of top.
4. Screw back panel to end panel using 25" L-bracket with #8 x 5/8" flat head screws (Hardware Kit HK-11).



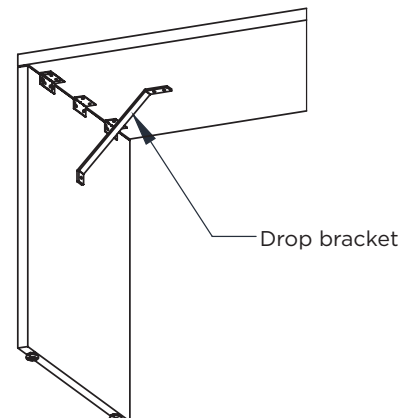
Wing End Assembly

1. Position wing end assembly flush to edge and back of top
2. Screw L-brackets to top using #10 x 5/8" pan head screws (Hardware Kit HK-9).



Top End Panel

1. Position end panel flush to edge and back of top.
2. Screw L-brackets to top using #10 x 5/8" pan head screws (Hardware Kit HK-10).
3. Screw drop bracket to top and end panel using #10 x 5/8" pan head screws (Hardware Kit HK-9).

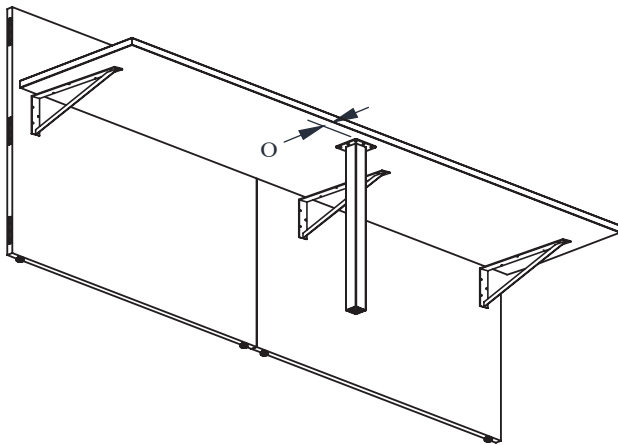


Worksurface Support Installation

Center Support

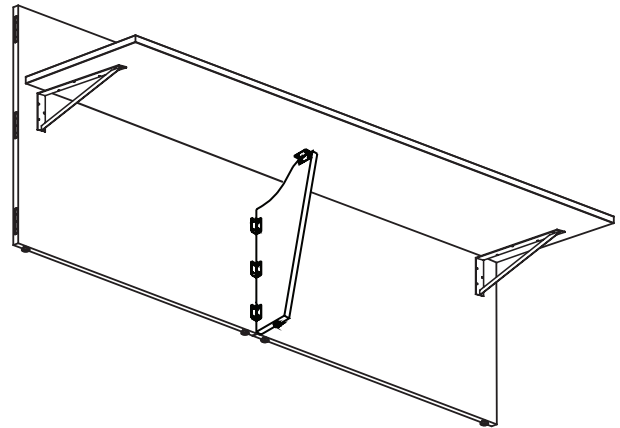
Square Metal Support - Item #6-L2S

1. Position base 2" off edge of worksurface anywhere extra support is needed.
2. Pilot holes on mounting plate and attach to worksurface using (8) #12 x 1" Phillips pan head screws.



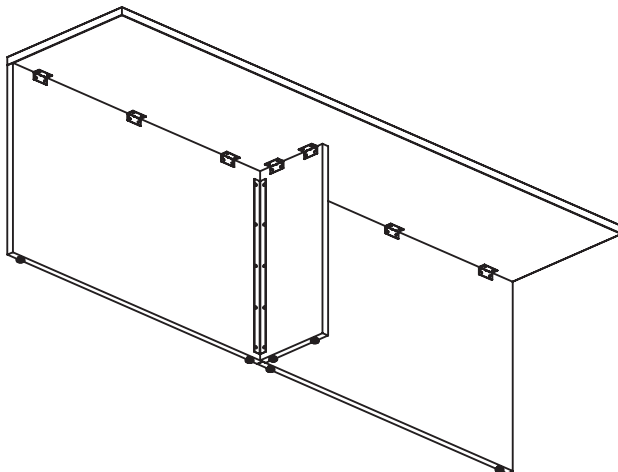
Wall Panel Support - #6-2812WPS

1. Place wall panel support in center of span between supports (pedestals, cantilevers, etc.).
2. Screw to wall panel and worksurfaces using #10 x 5/8" pan head screws (Hardware Kit HK-10) & #8 5/8" pan head screws (Hardware Kit HK-83).



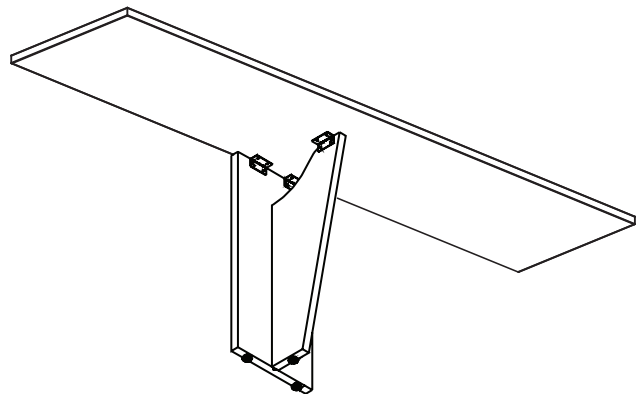
Back Panel Support - Item #6-2812SP

1. Place back panel support in center of span between supports (pedestals, cantilever, etc.).
2. Screw to back panel and worksurface using #10 x 5/8" pan head screws (Hardware Kit HK-10) & #8 x 5/8" flat head screws (hardware Kit HK-11)



T Support - Item #6-2812SB

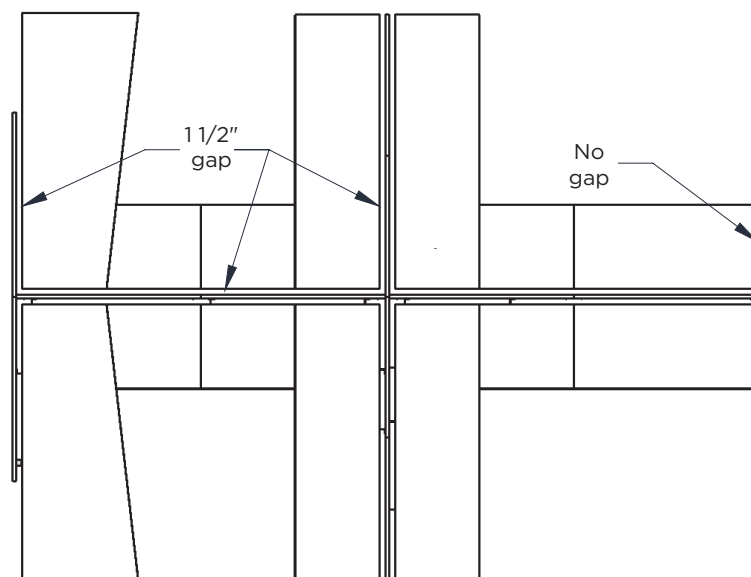
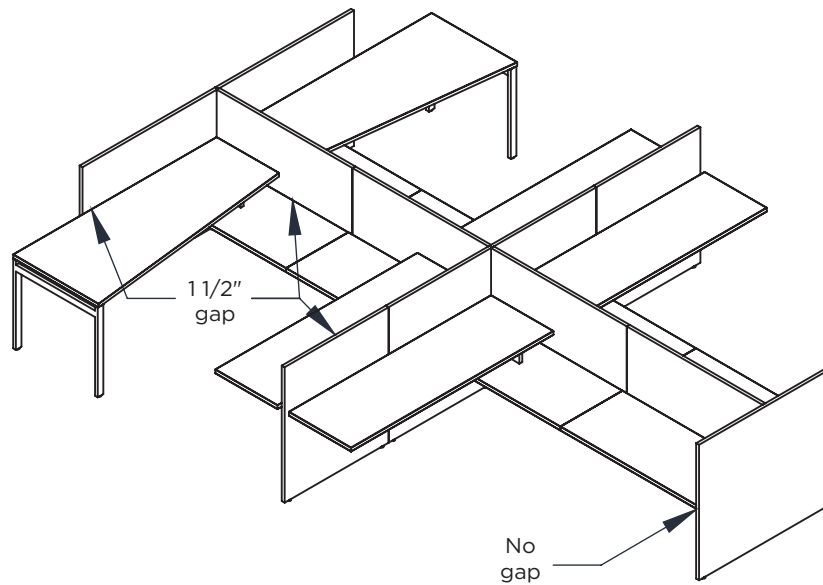
1. Place T support in center of span.
2. Screw to underside of worksurface using #10 x 5/8" pan head screws (Hardware Kit- HK-9).



Worksurface Installation

Top placement

1. Determine location of worksurfaces before placing them on cantilever brackets.
2. Some worksurfaces need to be connected before being placed on brackets and pedestals (see next page).
3. Consult worksurface plan drawing for proper placement.
4. Verify 1 1/2" cable management gap is required or if worksurfaces are mounted directly to wall panels.

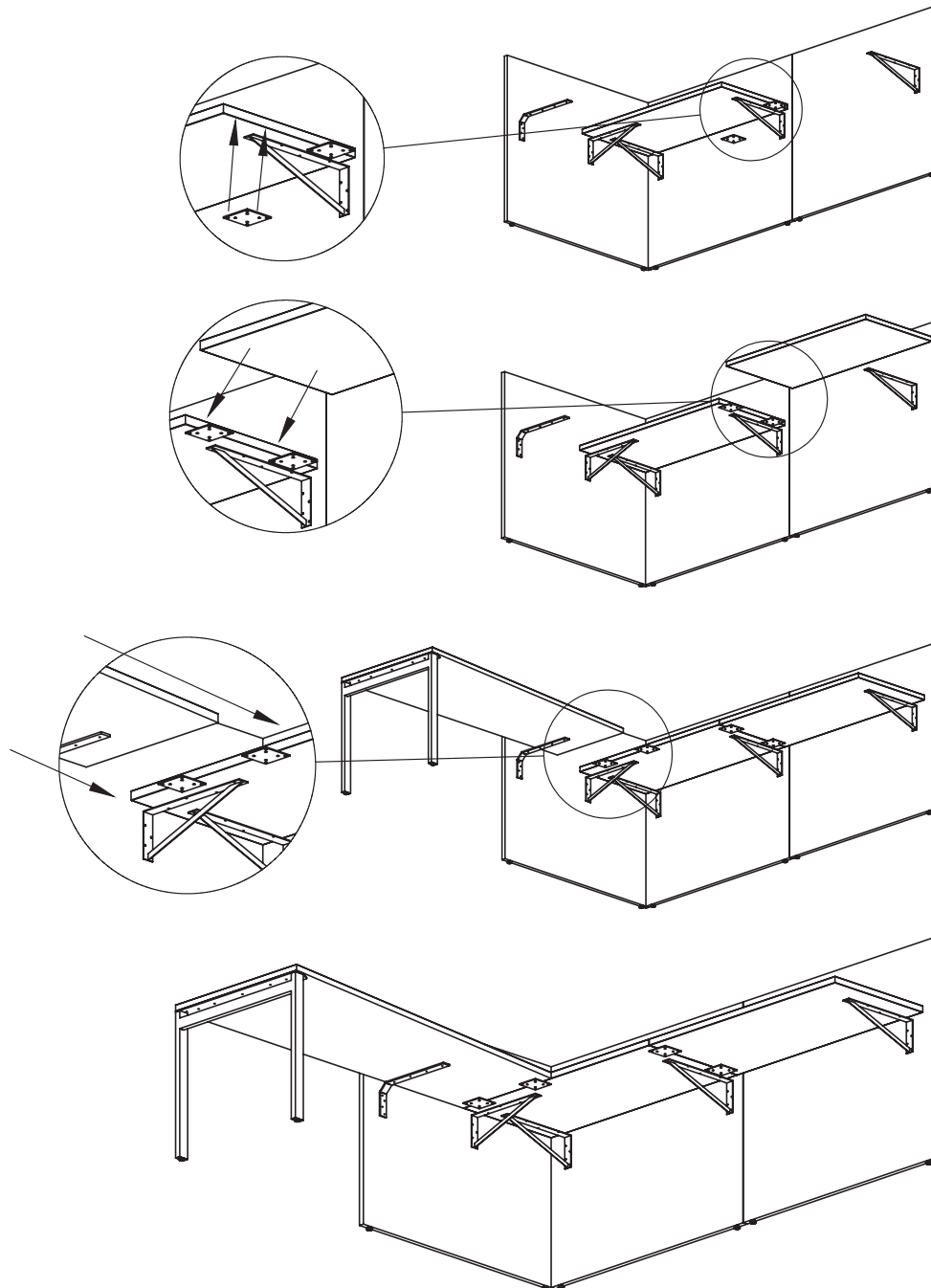


Worksurface Installation

Clamp plate installation

Clamp plates available from item #CP-1 & Hardware Kit HK-6.

1. Attach clamp plates.
2. Connect spine wall worksurfaces.
3. Attach run off worksurfaces.
4. Secure worksurfaces to cantilever brackets.

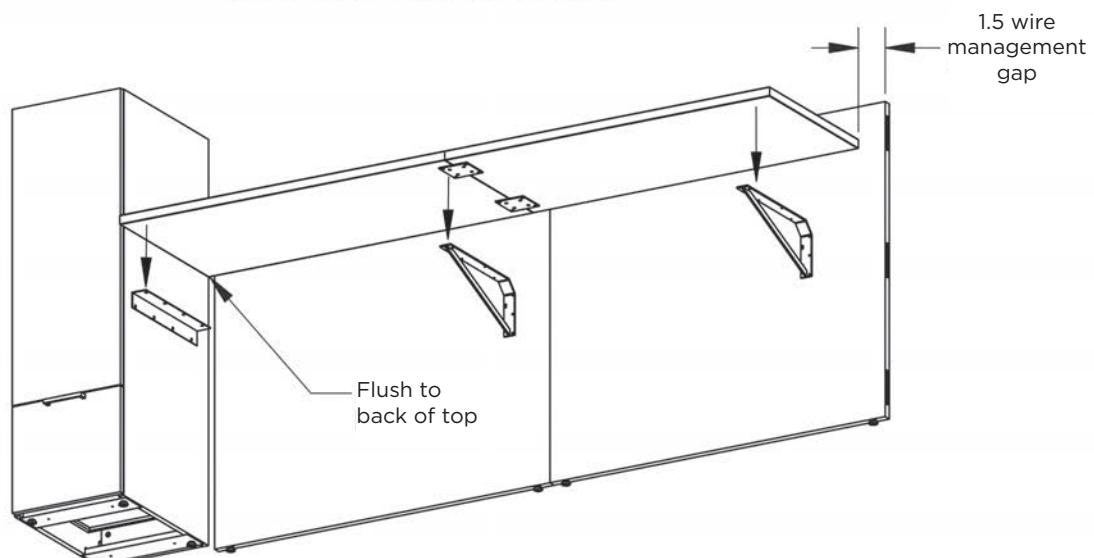
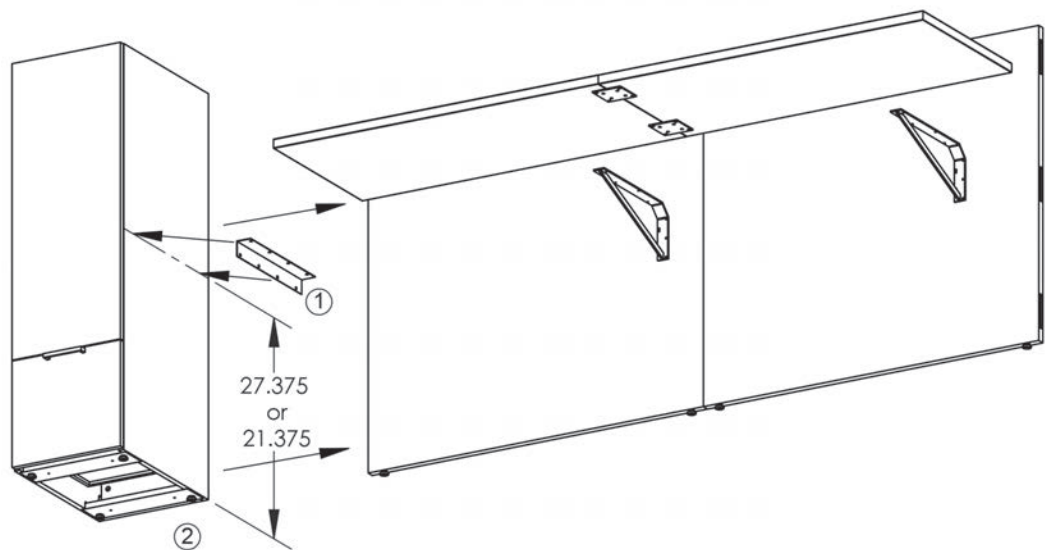


Worksurface Installation

L-bracket installation

Tall storage to worksurface connection

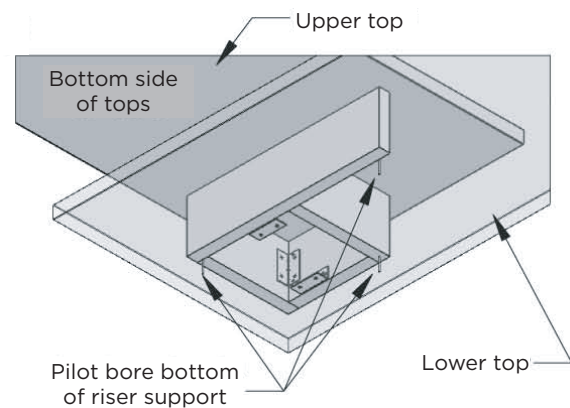
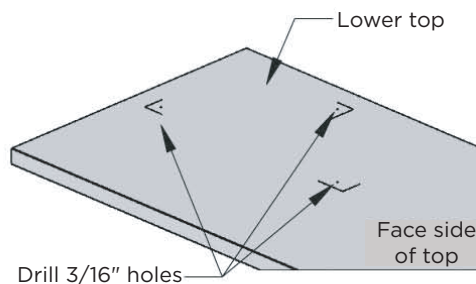
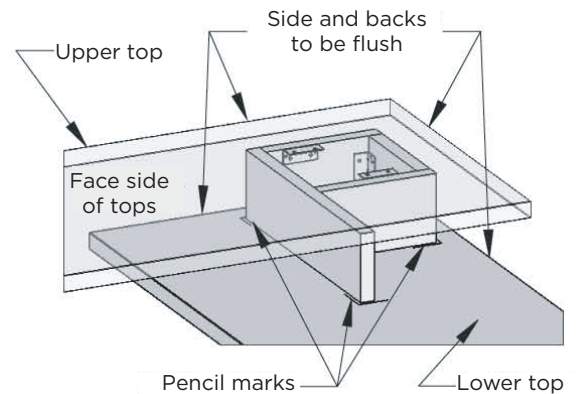
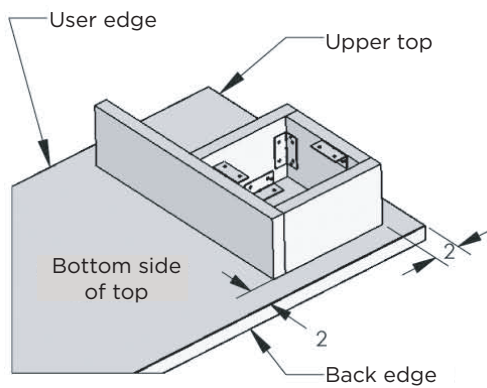
1. Mark side of storage tower for required height and attach L-bracket to side of storage tower with screws (Hardware Kit HK-11).
- 27 3/8" to bottom of end panel for worksurface height.
- 21 3/8" to bottom of end panel for lower height.
2. Move storage tower into position.
3. Back of storage tower should be flush to back end of worksurfaces.
4. Position worksurface on cantilever brackets and L-bracket. Keep 1 1/2" gap for wire management, if needed.
5. Attach with screws.



Worksurface Installation

Riser support installation

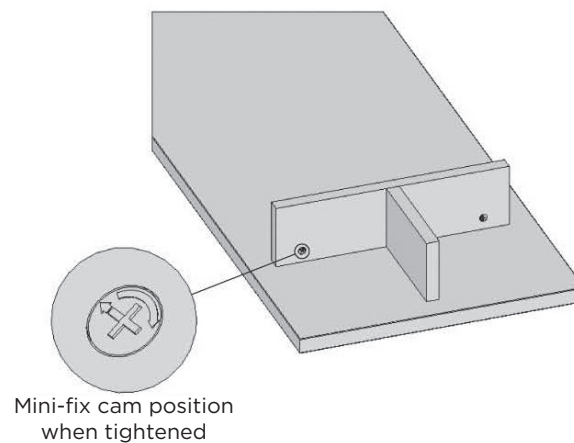
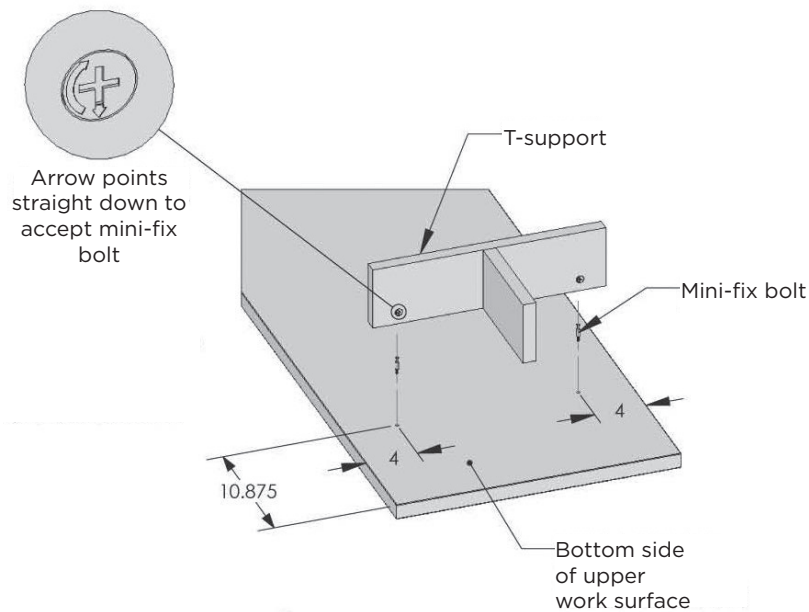
1. Flip upper top over and mount riser support to bottom side.
2. Space riser support 2" from back edge and 2" off edge
3. Screw L-brackets in boxed in area to top (Hardware Kit HK-9).
4. Flip upper top with attached riser support over and align upper top with lower top.
5. Pencil mark corners of riser support.
6. Remove upper top with attached riser support.
7. Bore three 3/16" holes through lower top. Holes should be 1/2" to the inside of the pencil marks.
8. Replace upper top with attached riser support.
9. Screw lower top to riser support using three screws (Hardware Kit HK-12).



Worksurface Installation

T-support installation

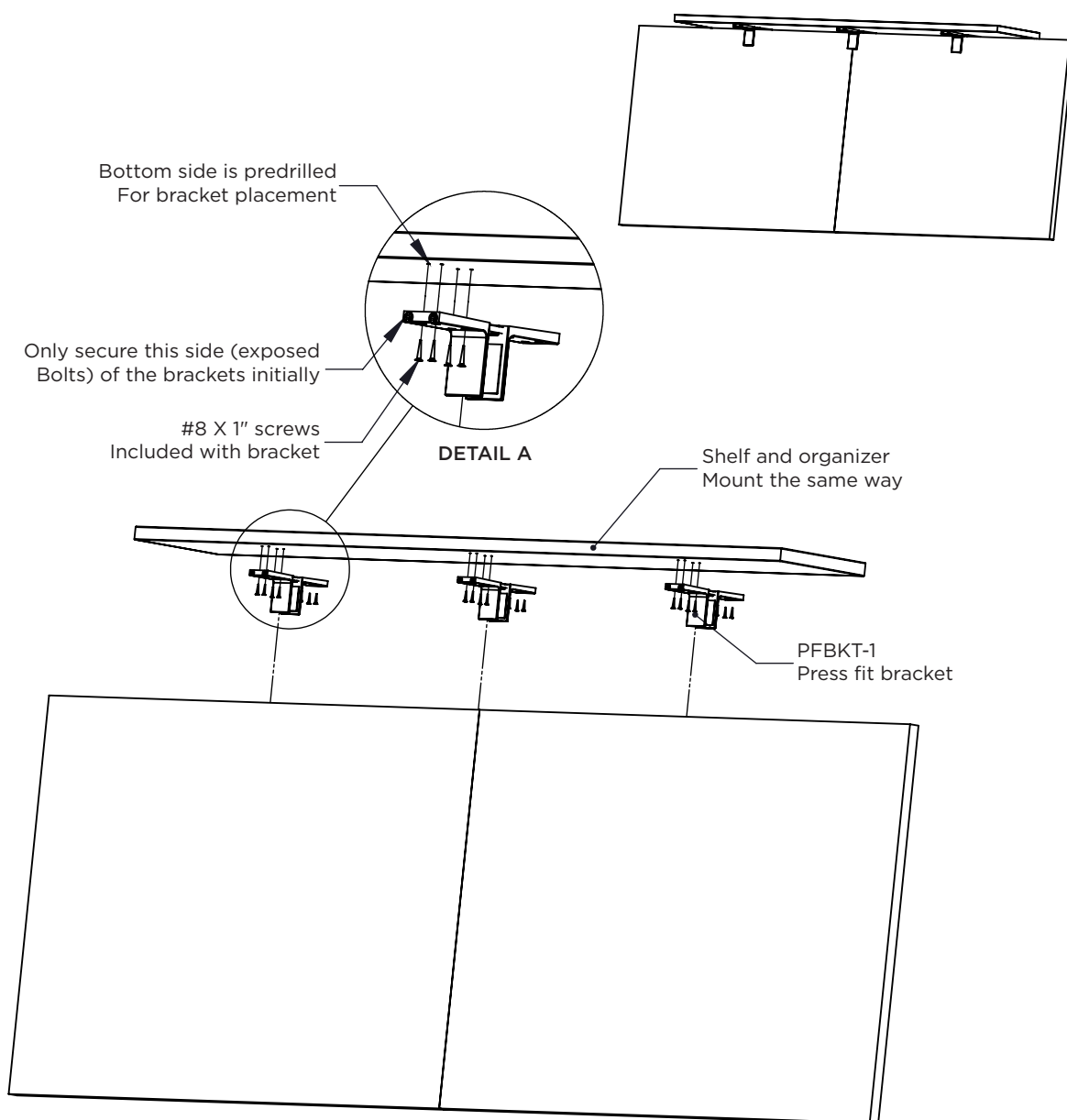
1. Drill two holes on the underside of the upper worksurface 1/8" diameter by 1/8" deep for mini-fix bolt (Hardware Kit HK-62).
2. Screw mini-fix bolt into predrilled holes.
3. Attach T-support to upper worksurface by aligning the mini-fix bolts with mini-fix cams on the T-support.
4. Secure mini-fix by turning mini-fix cams clock-wise on half turn.
5. Continue with steps 4-10 on riser support installation instructions on previous page.



Shared Shelf/Organizer Installation

All wall panels, worksurfaces and worksurface supports (including drawer pedestals), must be in final installed position and securely assembled before installing the items with press fit brackets.

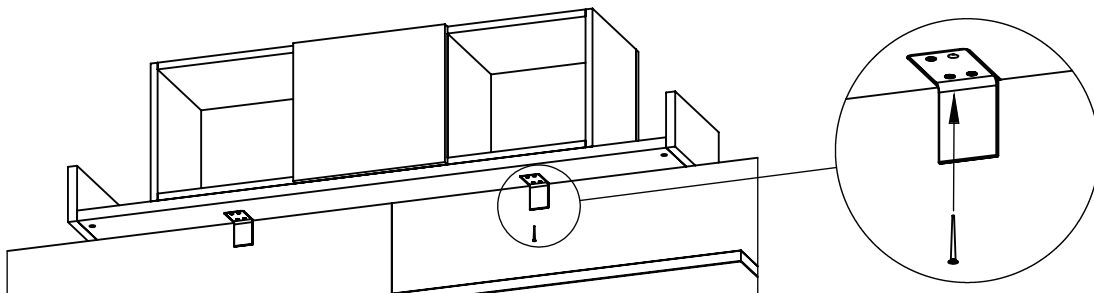
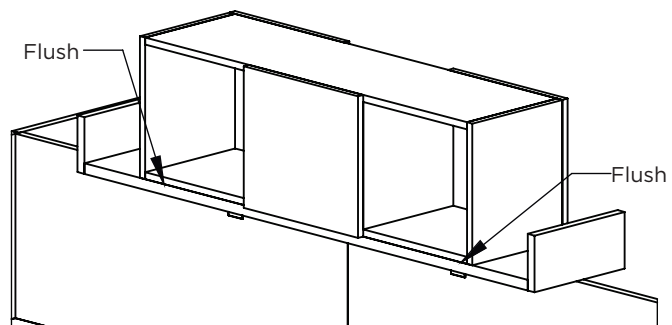
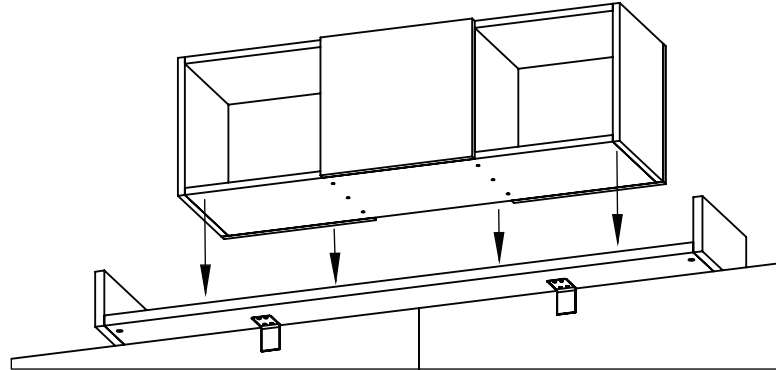
1. Secure the press fit bracket to the transaction shelf, see Detail A.
2. Place item with brackets on top of the wall panels. Tighten the bolts on the bracket with a 3/16" Allen wrench so that the other side of the bracket securely tightens onto the wall panels.
3. Once all brackets are tightened, secure the other side of the bracket.



Shared Shelf/Organizer Installation

Shelf mounted installation

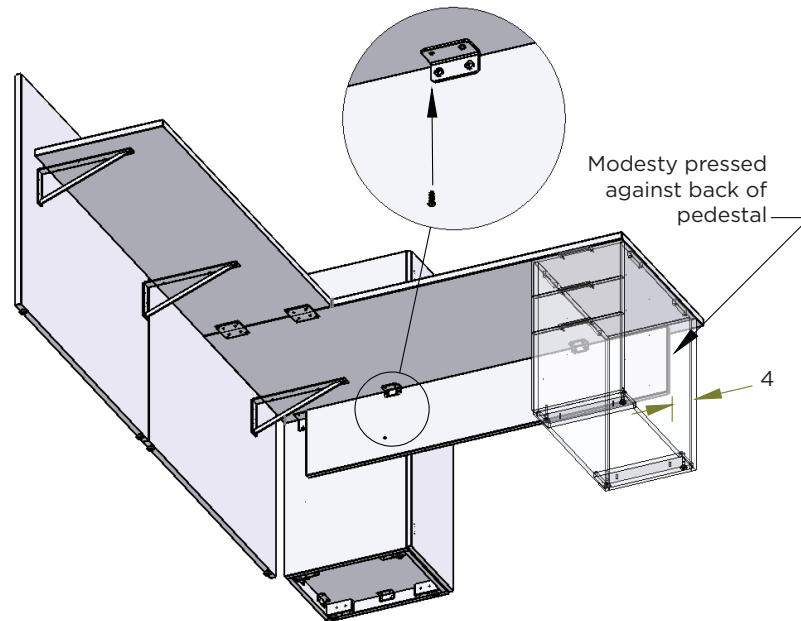
1. Place organizer shelf.
2. Position organizer on shelf so bottom is flush with shared shelf.
3. Replace shelf screws with longer screws provided with organizer (Hardware Kit HK-16).



Modesty Installation

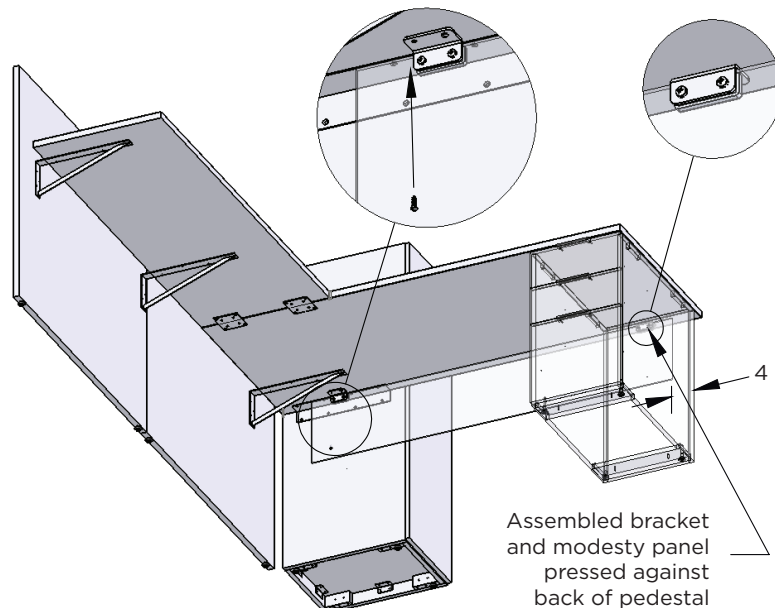
Wood Modesty Installation

1. Assemble modesty brackets to modesty panel by screwing bolts through bracket and into insert nuts in modesty panel (Hardware Kit HK-18).
2. Position modesty 4" from edge of pedestal pressed against pedestal back panel.
3. Screw brackets to bottom of worksurface.



Acrylic Modesty Installation

1. Assemble modesty brackets with screw caps to modesty panel by screwing bolts through bracket, acrylic modesty panel and into screw caps (Hardware Kit HK-18).
2. Reverse brackets that are positions directly behind a pedestal.
3. Position modesty 4" from edge of pedestal pressed against pedestal back panel.
4. Screw brackets to bottom of worksurface.

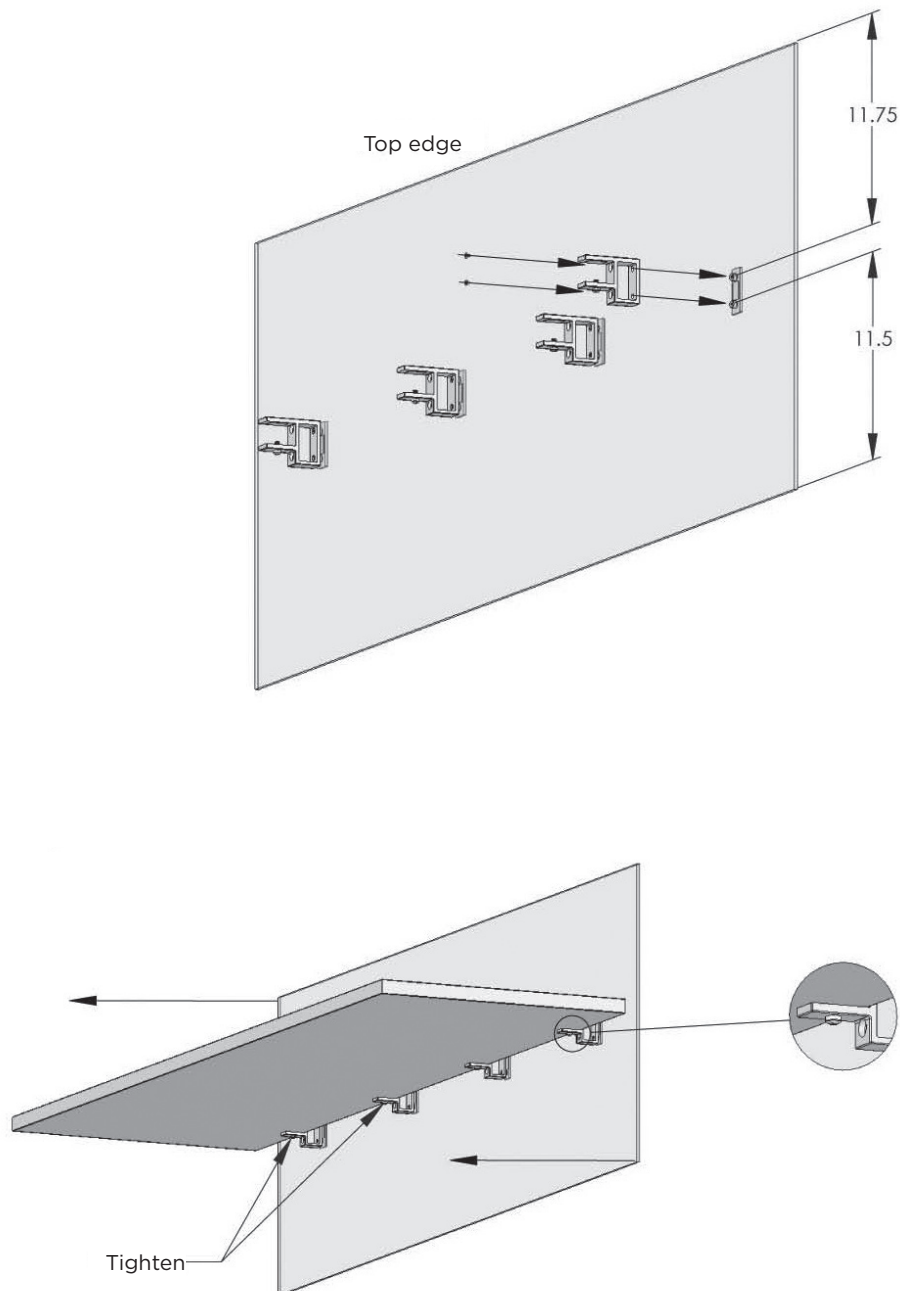


Modesty Installation

Front edge modesty panel

Item #6-WEMW, 6-WEMK, 6-WEMA, 6-WEMP

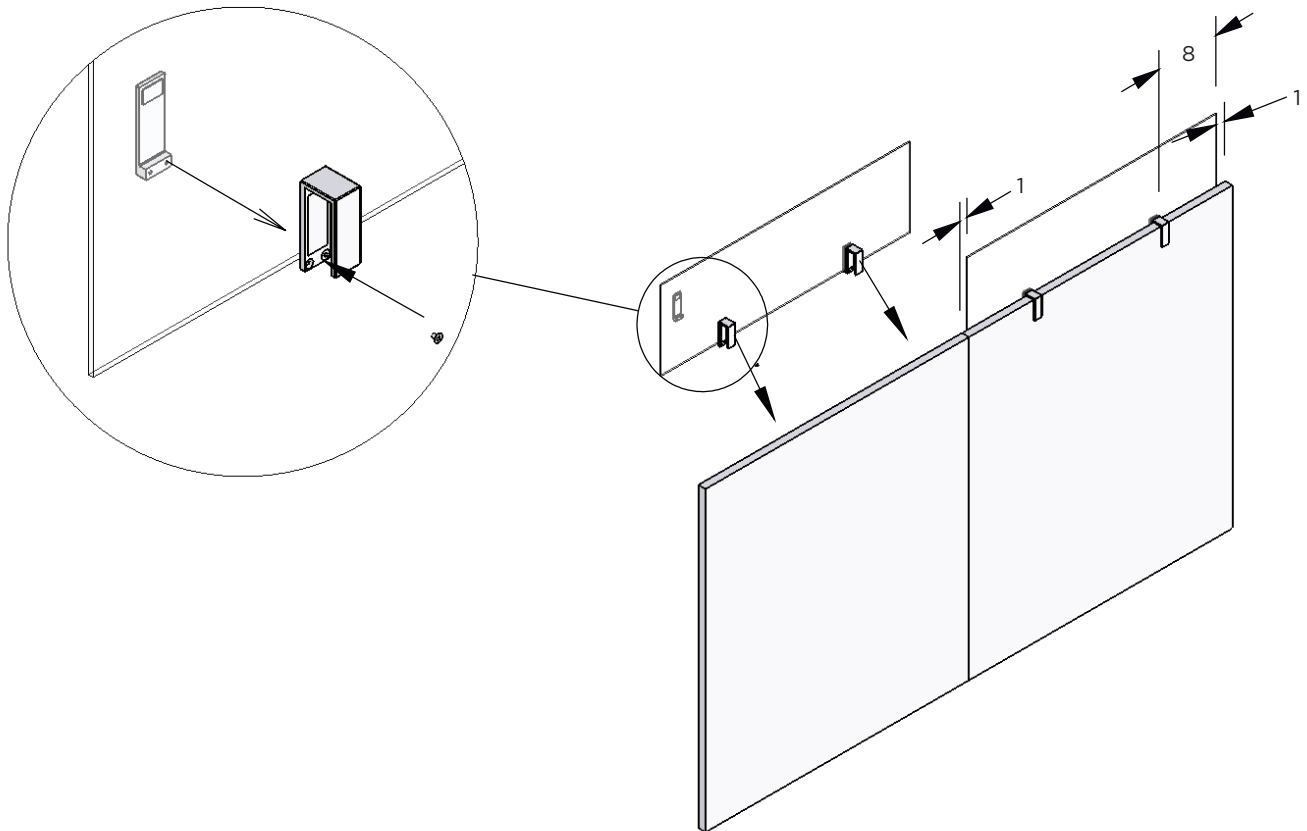
1. Attach brackets (Item # WEBKT-1, WEBKT-2) to modesty panel.
2. Tighten screws.
3. Attach assembled modesty panel to approach edge of worksurface.
4. Tighten screws.



Privacy Panel Installation

Item #6-PVPG, 6-PVPP, 6-PVPA

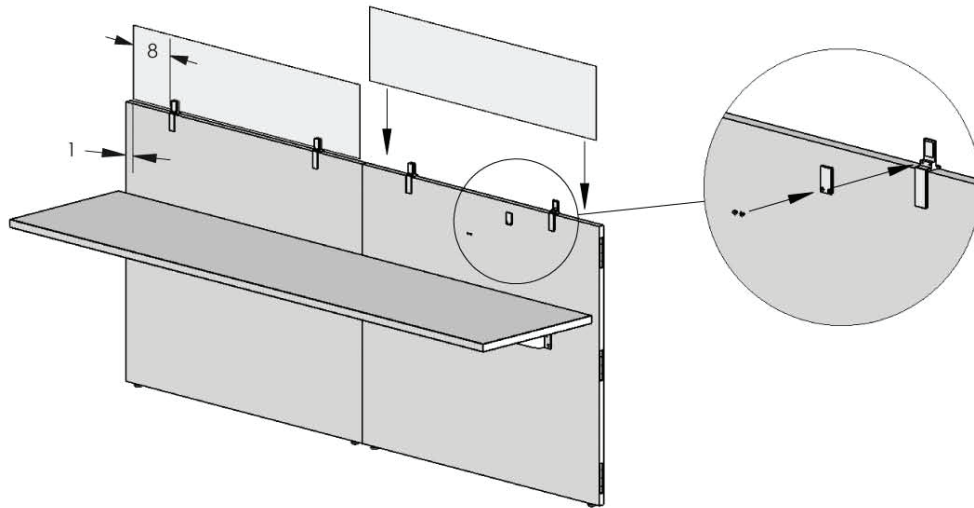
1. Position brackets (Item # PVPBKT-1) on bottom edge of privacy panel, usually 8" from the edge of panel.
2. Assemble two halves of brackets with privacy panel between two halves.
3. Tighten screws to ensure panel in place.
4. Hang completed assembly on top edge of wall panel, leaving 1" gap on either side of privacy panel.
5. Panel and bracket locations may vary. Consult plan drawing.



Privacy Panel Installation

Spine wall privacy panel

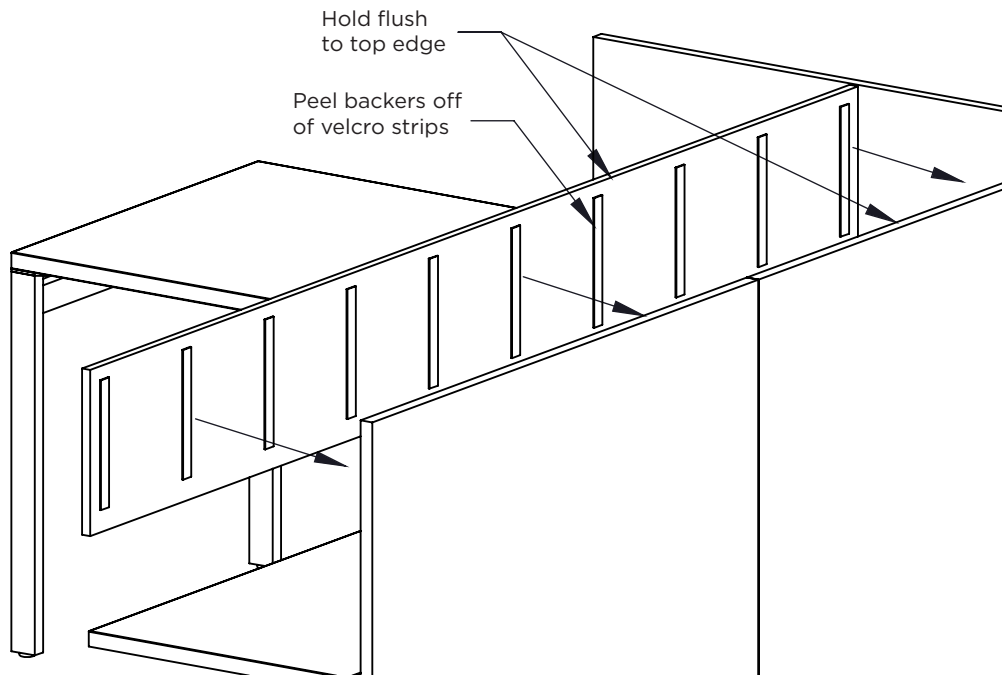
1. Position brackets (Item # PVPBKT-2) on bottom edge of privacy panel, usually 8" from edge of panel.
2. Assemble two halves of brackets with privacy panel between two halves.
3. Tighten screws to secure panel in place.
4. Hang completed assembly on top edge of spine wall panel, leaving 1" gap on either side of privacy panel.
5. Panel and bracket locations may vary. Consult plan drawings.



Tackboard Installation

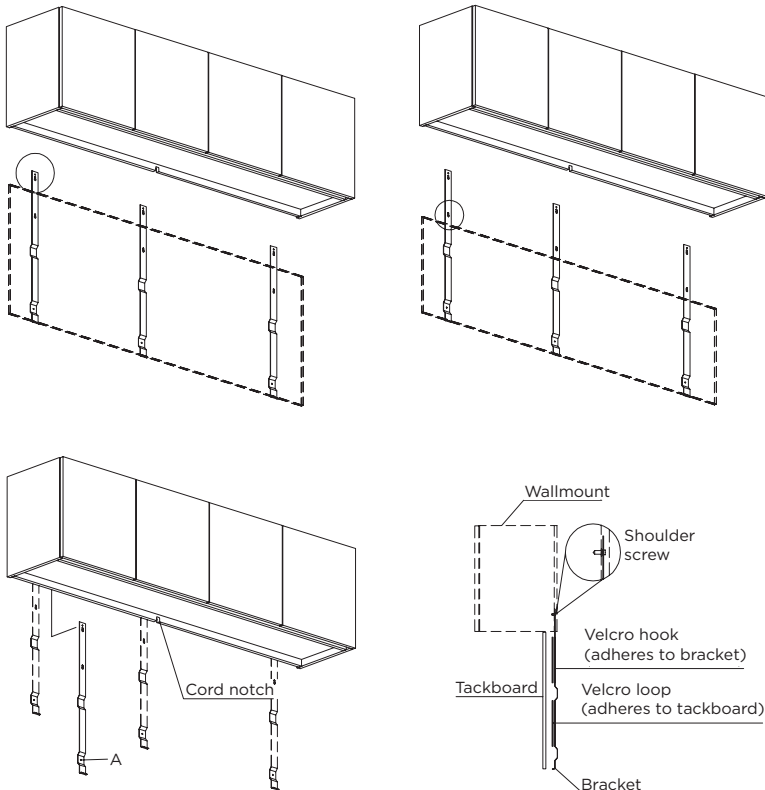
Wall panel tackboard installation

1. Peel backers off of velcro strips.
2. Carefully position tackboard in desired location.
3. Apply pressure to tackboard for good adhesive bond.



Tackboard Installation

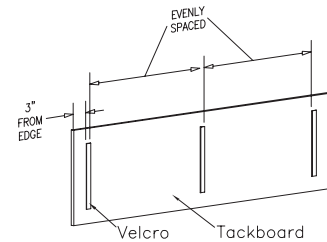
1. Determine which keyhole to use for your size tackboard.
2. Guide tackboard brackets behind wallmount until keyhole slips over shoulder screw on back of wallmount.
3. Level brackets vertically and secure to wall with screw using the lower hole A. **Note:** Refer to bracket spacing table to determine the location for brackets and shoulder screws.
4. Pull paper backing from velcro loop to expose adhesive backing. **Note:** Velcro should be stapled to the backside of the tackboard.
5. Make sure the velcro loop stays attached to the velcro hook.
6. Inspect back side of tackboard and remove any dirt or foreign matter.
7. Position light cord behind tackboard.
8. Center tackboard horizontally with wallmount and press firmly along the velcro loop to ensure proper contact.



Bracket Spacing Table

0"-40"	use (2) brackets
Location:	(2) 6" from edges
40 1/8"- 80"	use (3) brackets
Spacing:	(2) 6" from edges, (1) 2" from center towards left side.
80 1/8"-100"	Use (4) brackets
Spacing:	First bracket to be 6" in from the outer edge. Second bracket to be 31 3/4" in from the outer edge.
100 1/8" - 120"	Use (4) brackets
Spacing:	First bracket to be 6" from the outer edge. Second bracket to be 38 7/16" in from the outer edge.

Note: Brackets are to be spaced from each side (right and left)



Highback organizer installation

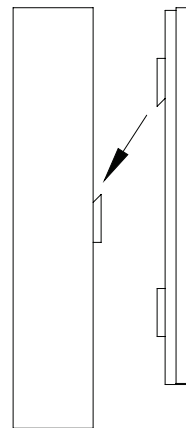
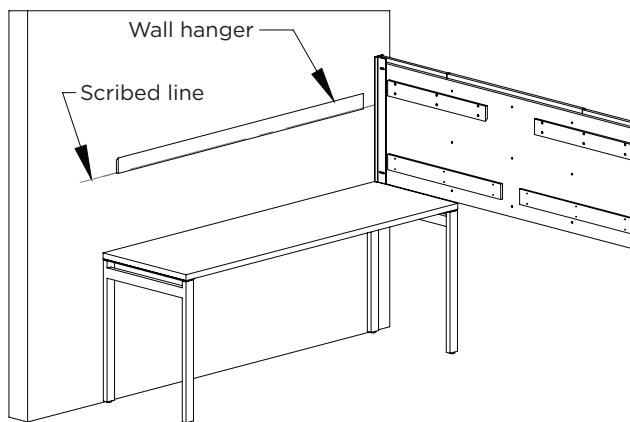
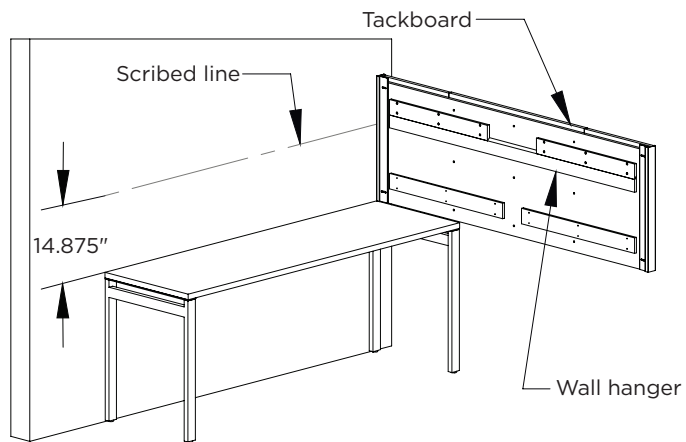
1. If possible, install the tackboard with the highback organizer lying on its back.
2. Center tackboard on organizer and mark corner location with masking tape.
3. Remove paper backing on factory installed velcro strips.
4. Align tackboard with previously marked corners on organizer and press in place.

Note: It is important to apply pressure to tackboard to insure proper bonding of adhesive backed velcro. The adhesive backed velcro bonds by pressure and it's holding power will increase with time if applied properly. It is important the tackboard be in the correct position the first time. Do not attempt to reposition tackboard as this will weaken the bond.

Tackboard Installation

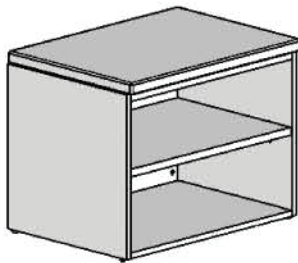
Wallmount tackboard

1. Scribe a line 14 7/8" above worksurface where tackboard is to be mounted.
2. Remove wall hanger from back side of tackboard.
3. Bore mounting holes in wall hanger.
4. Line up bottom of wall bracket with scribed line on wall and mark location of fasteners.
5. Attach to wall with appropriate fasteners for wall conditions.
6. Lower tackboard into wall hanger.

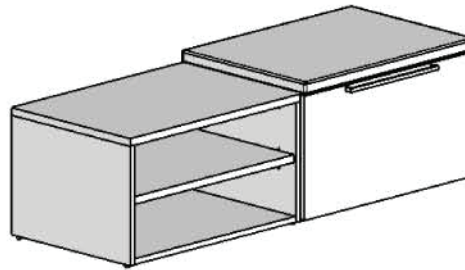


Seat Cushion Installation

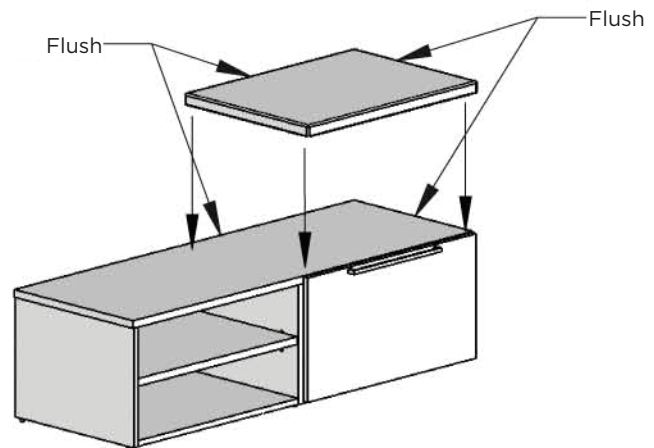
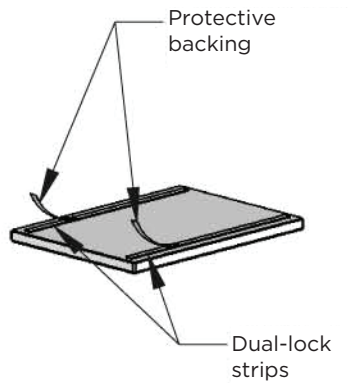
1. Check installation drawing for cushion locations.
2. Peel protective backing from Dual-Lock strips to expose adhesive.
3. Position cushion where desired with back edge flush to back edge of case.
4. Usually the cushion will also be flush to the side of the case.
5. There will be 7/8" overhang to the top, 1/8" overhang to the drawer front, if present.
6. Apply pressure to cushion to seat the adhesive.



Low height



Bench height



Wall Mounted Storage Installation

1. Determine desired location of unit. Be sure to leave enough space below unit for computer monitors or other equipment that may be placed under the cabinet.
2. Measure from the floor to where the top of the cabinet will be and lightly draw a level, horizontal line (Line A) using a carpenter's level.
3. Draw another line (Line B) 6 1/4" below line A. This is where the mounting rail will be fastened to the wall.
4. Drill holes for appropriate wall fasteners through mounting rail.
5. Align bottom edge of mounting rail on line B and mark location of mounting holes.
6. Fasten mounting rail to wall.
7. Hang cabinet on mounting rail. The mounting rail attached on the back of the cabinet will rest on the mounting rail on the wall.

